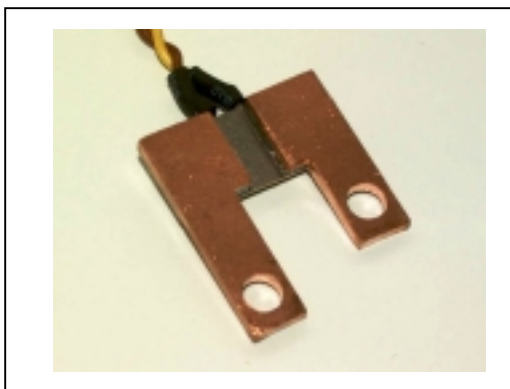


## CUMnNi – precision resistors for energy metering Type series EM-SH



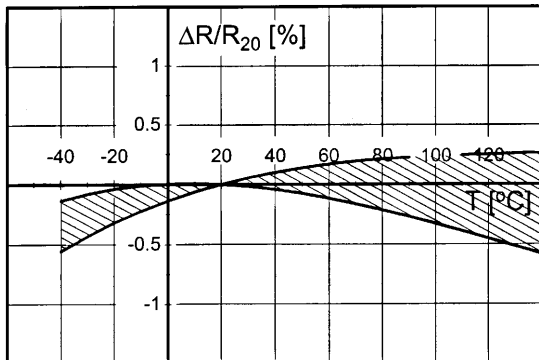
### Applications:

- Shunt for power-metering
- Battery current sensing
- Current sensing in automotive applications

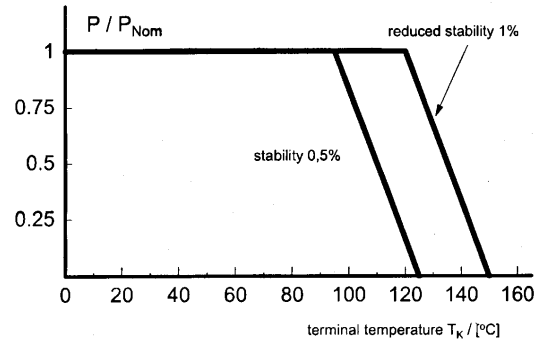
### Technical data: of SH3-300

Resistance value	0,3 mOhm for SH3-300
Tolerance	0,28 – 3,0 mOhm
Temperature coefficient	< 20 ppm/K (20°C to 60°C)
Applicable temperature range	-55 to +125°C
Load	3 Watt
Max. pulse power	100 Watt / 0,1 s
Permanent current	Max. 80A
Internal heat resistance	< 10 K/W
Inductance	< 1 nH
Average lin. thermal expansion coefficient	$18 \times 10^{-6}/K$
Long term stability (nominal load)	Deviation < 0.3% after 1000h at $T_K = 80^\circ C$
Max. solder temperature	Up to 350°C/30 s or 250°C/10min.
Assembly	Soldering or welding on copper
Mounting position	Vertical to PCB or terminal block
Weight	approx. 10g

**CUMnNi – precision resistors for energy metering Type series EM-SH**

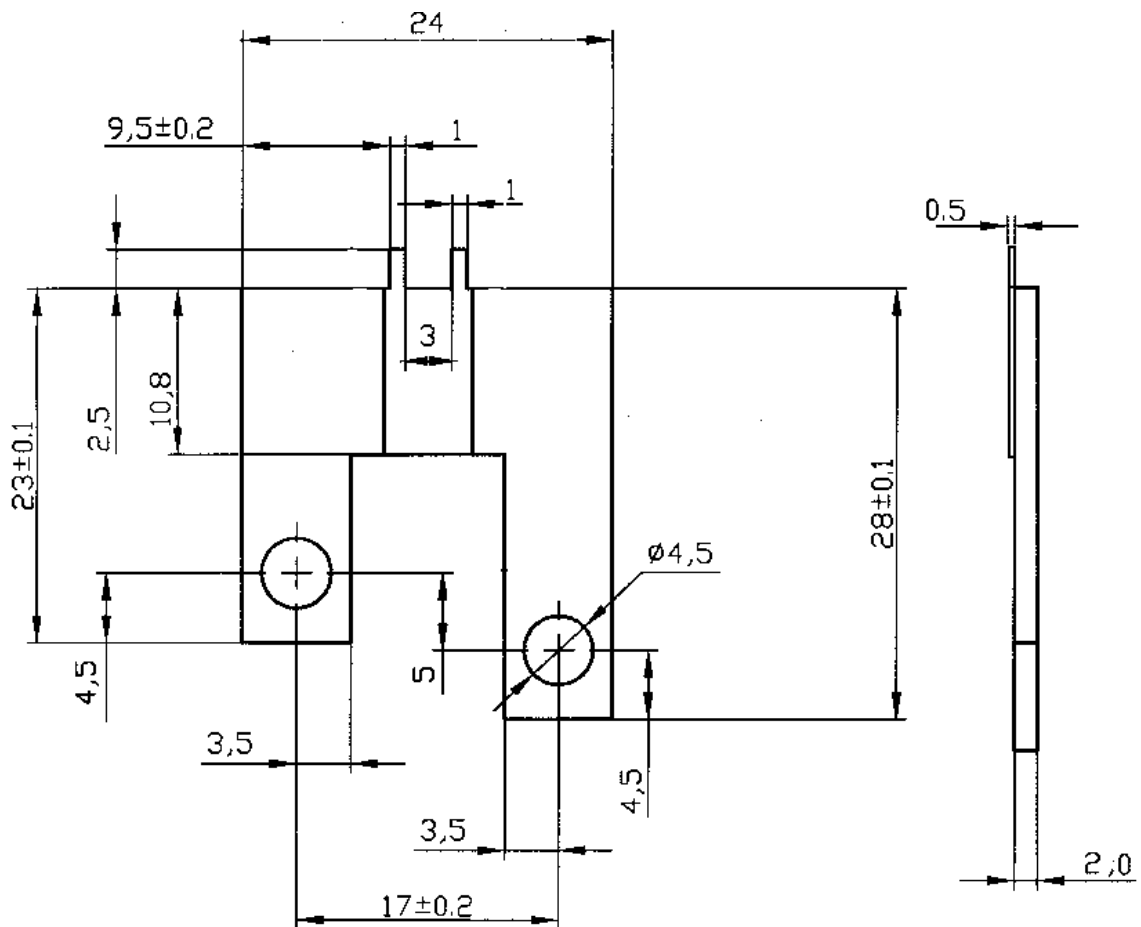


Temperature dependence of the electrical resistance of CuMnNi-resistors

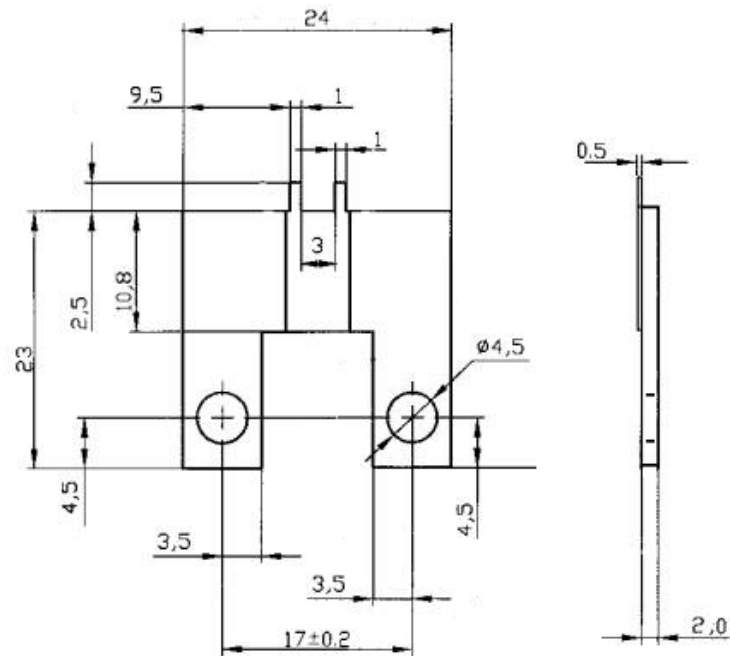


Power derating

**Dimensions for SH3.1-300:**



**Dimensions for SH3.2-300:**



**Dimensions for SH3.3-300: (preliminary)**

