

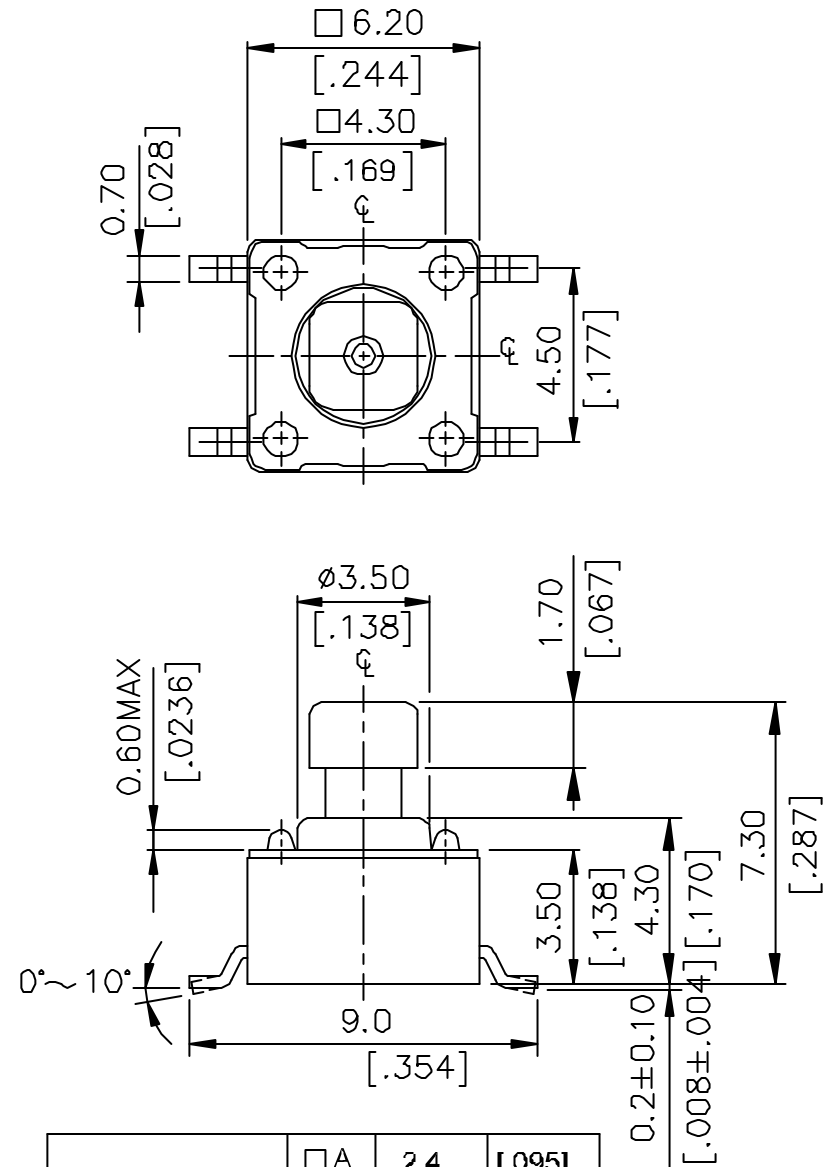
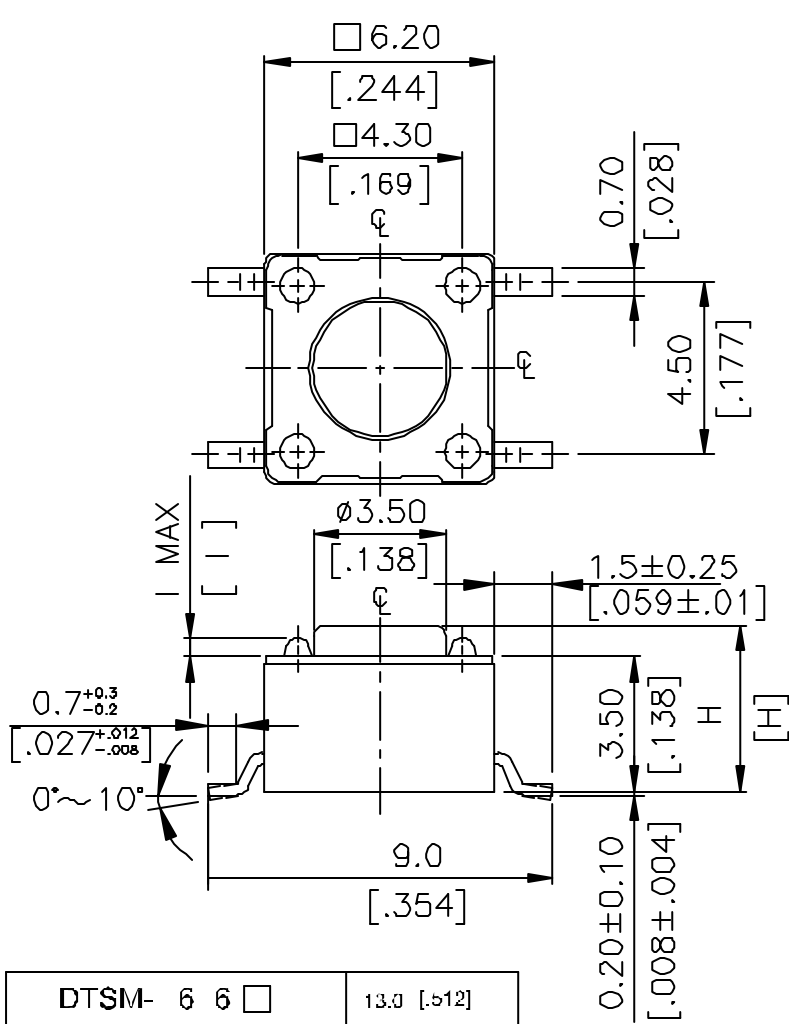


DIPTRONICS MANUFACTURING INC.

DTSM-6(2) SERIES

DIMENSIONS

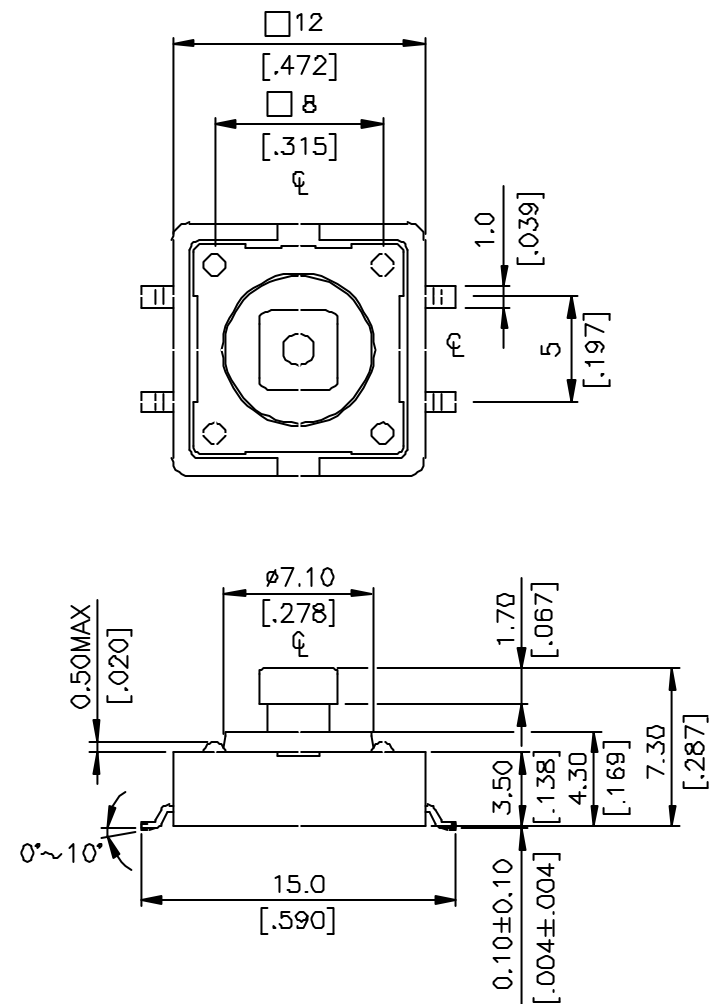
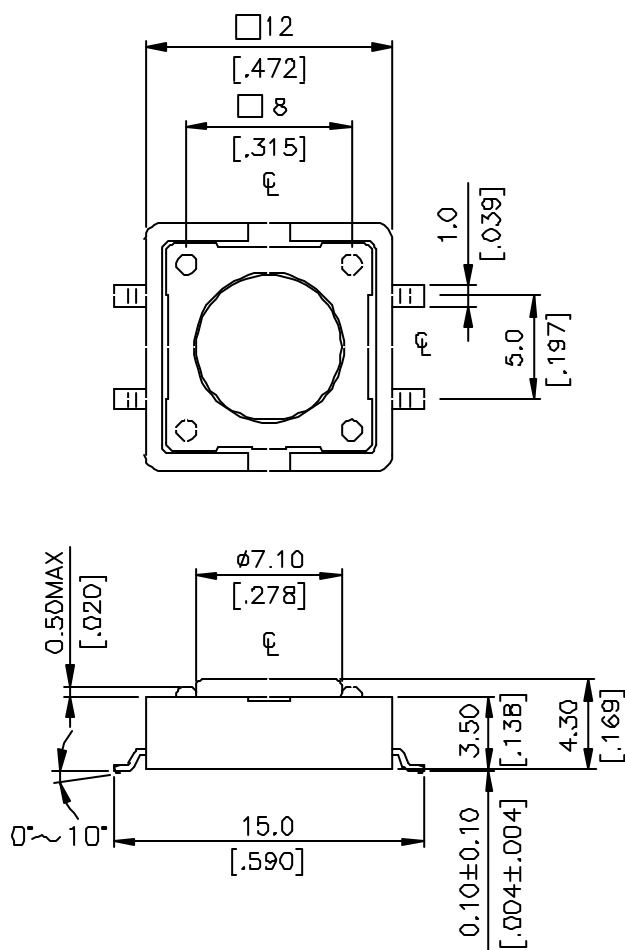
DTSM-6



DTSM- 6 6 □	13.0	[.512]
DTSM- 6 5 □	9.5	[.374]
DTSM- 6 3 □	7.0	[.275]
DTSM- 6 2 □	5.0	[.197]
DTSM- 6 1 □	4.3	[.169]
PROD. NO.		H

DTSM-644 □	□A	2.4	[.095]
	□B	1.6	[.063]
DTSM-648 □	□A	2.8	[.110]
	□B	2.0	[.079]
PROD. NO.	LOC.	MM.	INCH.

DTSM-2



HOW TO ORDER

DTSM -

Package Style:
B = Tube
 ? T/R= Tape & Reel
 <? Except DTSM-66>

Color of Stem For Operating Force:
 ? **K = Black, 100gf**
N = Brown, 160gf
R = Red, 260gf
S = Salmon, 320gf
 ? **Y = Yellow, 520gf**
N/K = Black, 160gf
 <? 12x12mm, K,Y Unavailable>

Dimension H:

| | |
|---------------------------|-------------------------|
| 6x6 mm | 12x12 mm |
| 1 = 4.3 mm | 1 = 4.3mm |
| 2 = 5.0 mm | 4 = 7.3mm (SQ.) x 3.8mm |
| 3 = 7.0 mm | 5 = 8.5mm |
| 44 = 7.3 mm (SQ.) x 2.4mm | |
| 48 = 7.3 mm (SQ.) x 2.8mm | |
| 5 = 9.51 mm | |
| 6 = 13 mm | |

Prod. Size
 6 = 6x6 mm
 2 = 12x12 mm

Surface-Mounting Type Tactile Switch

SPECIFICATION

MECHANICAL

| | | |
|------------------|-------------|------------|
| Operation Force: | 520 ± 130gf | Yellow (Y) |
| | 320 ± 80gf | Salmon (S) |
| | 260 ± 50gf | Red (R) |
| | 160 ± 50gf | Brown (N) |
| | 100 ± 50gf | Black (K) |

Stroke: (6x6) 0.25 +0.2mm / -0.1mm
 (12X12) 0.35 ±0.1mm

Operation Temperature: -25 to +70
 Storage Temperature: -30 to +80

ELECTRICAL

Electrical Life: 300,000 cycles for 320gf, 520gf
 500,000 cycles for 260gf
 1,000,000 cycles for 100gf, 160gf

Rating: 50mA , 12VDC

Contact Resistance: 100mO max.

Insulation Resistance: 100MO min. at 500VDC

Dielectric Strength: 250VAC/ minute

Contact Arrangement: SPST

MATERIALS

COVER: Steel, Tin plated

BASE: UL94V-0 Nylon Thermoplastic

Color: Black

STEM: UL94V-0 Nylon Thermoplastic

Color: Black (100gf), Brown (160gf)

Red (260gf), Salmon (320gf)

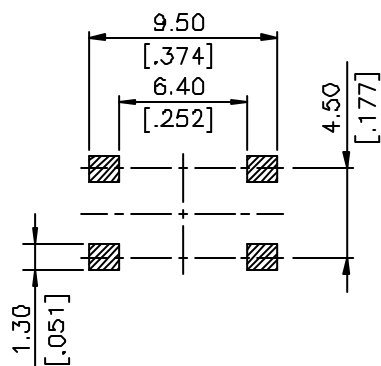
Yellow (520gf)

CONTACT DISC: Phosphor Bronze with silver cladding

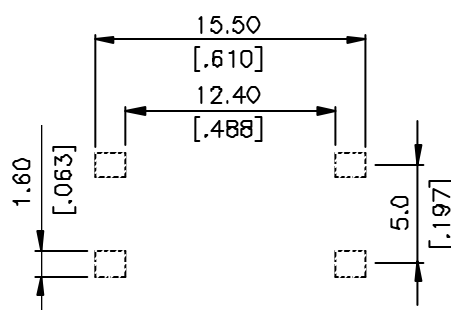
TERMINAL: Brass with silver cladding

CAP: Thermoplastic ABS

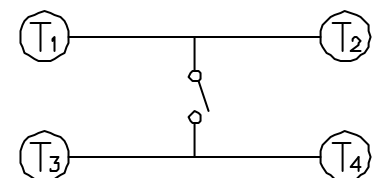
DTSM-6



DTSM-2



P.C.B LAYOUT



CIRCUIT DIAGRAM

