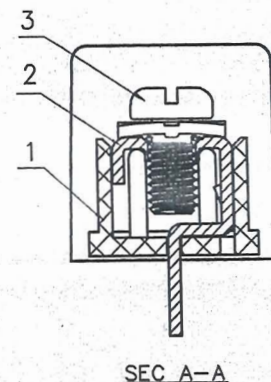
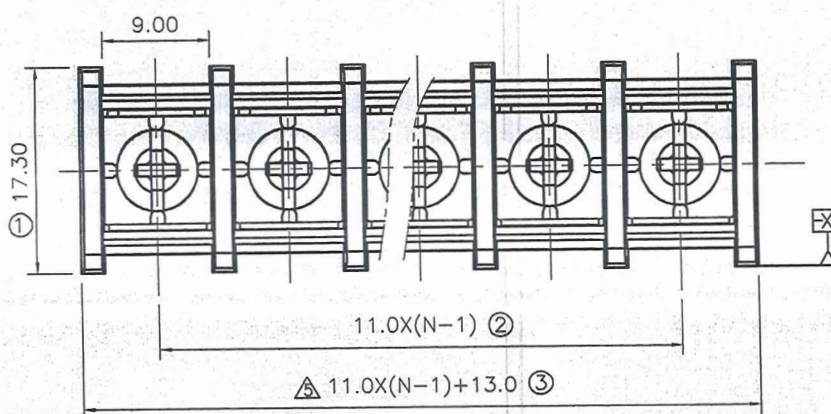


REVISION RECORD

| REV | ECN     | DESCRIPTION                          | DRFT | DATE      |
|-----|---------|--------------------------------------|------|-----------|
| △   |         | 图面更新                                 | HW   | 06/08/06" |
| △   |         | 增加UL刻字                               | CSX  | 11/23/06" |
| △   |         | 品名、料号增加环保标识“(H)”                     | YeJ  | 12/08/07" |
| △   | 15-0550 | 修改长度尺寸标注、修改工频耐压、增加PCB Layout、增加外部成品图 | Nick | 12/08/15" |



备注一:

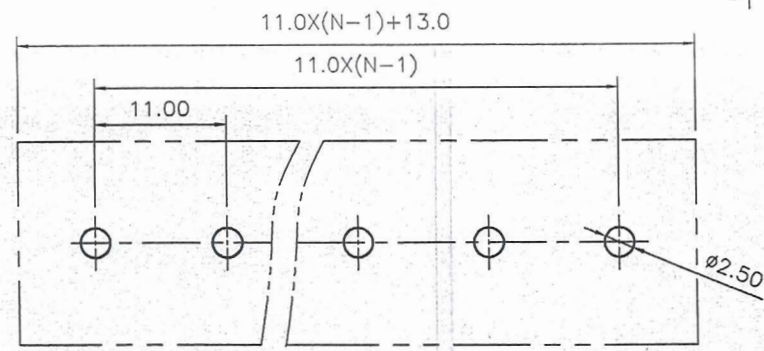
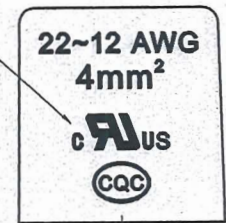
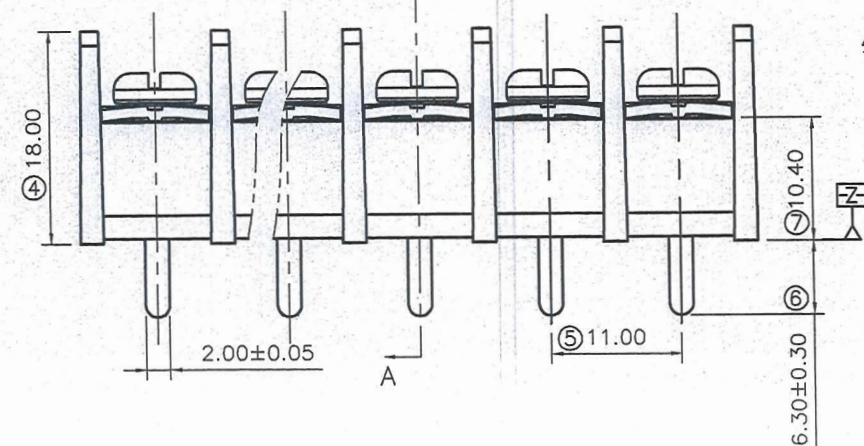
- UL 标准
1. 额定电压与电流: 300V / 20A
  2. 螺丝扭力: M4, 10.53Lb.in
  3. 线径范围: 22~12AWG

备注二:

1. 尺寸标注符合标准 ASME Y14.5-2009
2. P距: 11.0mm, P数范围: N=02~22P
- △ 3. 工频耐压: AC1600V/1Min.
4. 使用温度范围: -40°C~+105°C
5. "⊗" 为重点管控尺寸
6. 未注公差表:

| P距方向公差(mm)  |        |         |     | 其他尺寸公差(mm) |          |           |      |         |
|---|--------|---------|-----|------------|----------|-----------|------|---------|
| ≤6  | 6 ~ 10 | 10 ~ 24 | ≤30 | 30 ~ 60    | 60 ~ 100 | 100 ~ 150 | >150 | 0.05/10 |
| ±0.10 ±0.15 ±0.25 ±0.20 ±0.30 ±0.50 ±0.70 ±1.00 ±1* |        |         |     |            |          |           |      | ±1*     |

7. 须符合RoHS环保要求



PCB LAYOUT △

| 3    | M4*8(9*9)+字螺丝 | S000000580(H) | N    | 钢        | 镀锌      |
|------|---------------|---------------|------|----------|---------|
| 2    | DG65C焊脚       | 5005B00010(H) | N    | 黄铜       | 镀锡      |
| 1    | DG65塑体        | 5005AYYXXA(H) | 1    | PA66     | UL94V-0 |
| ITEM | NAME OF PART  | NO. OF PART   | Q'TY | MATERIAL | NOTES   |

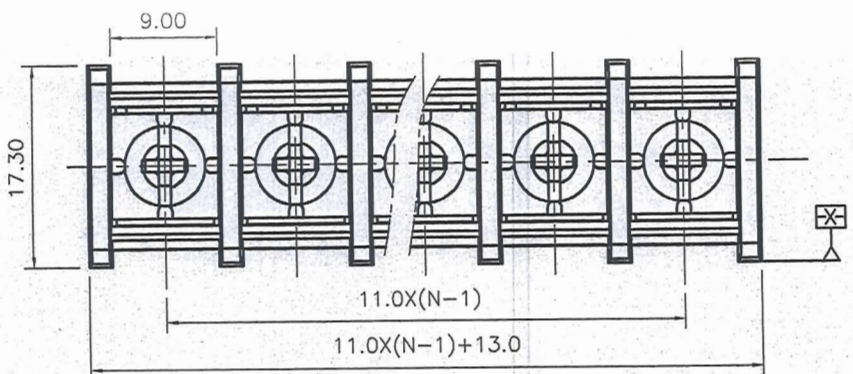
DEGSON 宁波高松电子有限公司  
NINGBO DEGSON ELECTRICAL CO., LTD

APPD: *Amor 12/11-15* NAME: DG65C-B-XXP-1Y-00A(H) △  
CHKD: *Dicky 2015.12.9*  
DRFT: Haoyh 06/20/05" TITLE: ASSEMBLY DRAWING REV T5

DRAWING NO.: DG65C-E08 SHEET 1/1  
MM (INCH) DO NOT SCALE DRAWING SCALE 1:1

THIRD ANGLE PROJECTION

| REVISION RECORD |     |             |      |      |
|-----------------|-----|-------------|------|------|
| REV             | ECN | DESCRIPTION | DRFT | DATE |
|                 |     |             |      |      |

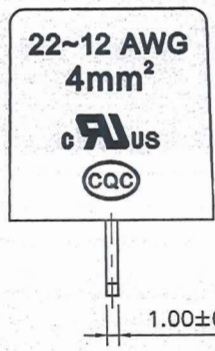
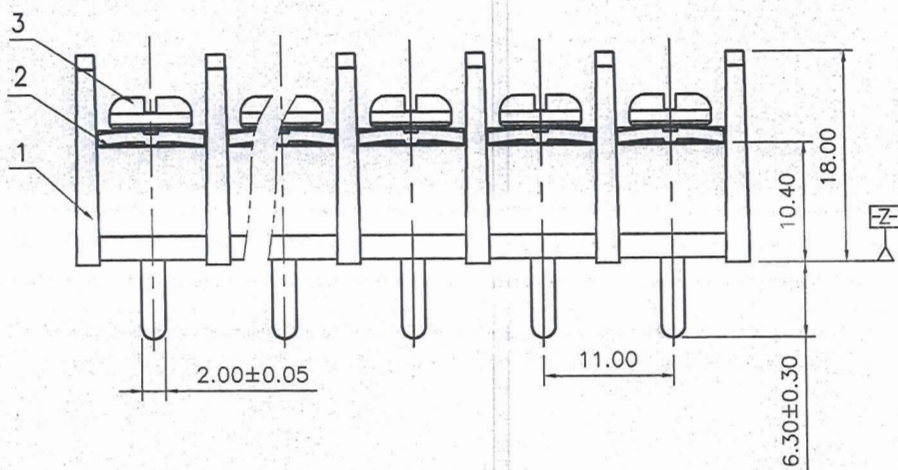


NOTES1:  
 UL Standard  
 1. Rated Voltage/Current : 300V / 20A  
 2. Torque Value : M4 , 10.53Lb.in  
 3. Wire Range : 22~12AWG

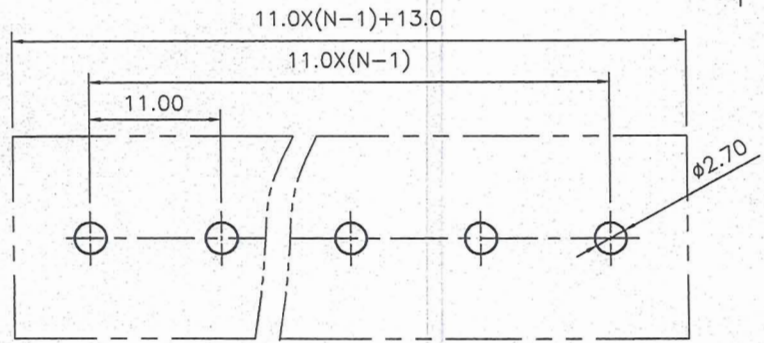
NOTES2:  
 1. Dimension shall be interpreted per ASME Y14.5-2009  
 2. Pitch : 11.0mm, Poles : N=02~22P  
 3. Withstanding Voltage : AC1600V/1Min.  
 4. Operating temperature: -40°C~+105°C  
 5. Undimensioned Tolerances:

| Pitch Range In mm | Nominal Dimension Range In mm |               |               |                |                 |          | Tolerance |
|-------------------|-------------------------------|---------------|---------------|----------------|-----------------|----------|-----------|
|                   | Over 6 TO 10                  | Over 10 TO 24 | Over 30 TO 60 | Over 60 TO 100 | Over 100 TO 150 | Over 150 |           |
| ±0.15             | ±0.20                         | ±0.30         | ±0.50         | ±0.70          | ±1.00           | ±1.30    | ±2°       |

6. RoHS Compliance



文管中心  
 研发专用  
 2016. 1. 05  
 (仅限内部使用, 对外无效)



PCB LAYOUT

| ITEM | NAME OF PART | MATERIAL     | NOTES        |
|------|--------------|--------------|--------------|
| 3    | SCREW        | STEEL        | M4/Sn PLATED |
| 2    | PIN HEADER   | COPPER ALLOY | Sn PLATED    |
| 1    | HOUSING      | PA66         | UL94V-0      |

|                        |                       |   |                       |           |
|------------------------|-----------------------|---|-----------------------|-----------|
| DETACHED LISTS         | PART NO.: /           | 宁波高松电子有限公司<br>DEGSON® NINGBO DEGSON ELECTRICAL CO., LTD |                       |           |
|                        | APPD: Aaron 12/15     | NAME:   | DG65C-B-XXP-1Y-00A(H) |           |
|                        | CHKD: Tracy 2015.12.9 | TITLE: CUSTOMER DRAWING                                 | REV                   | J TO      |
|                        | DRFT: Nick 12/07/15   | DRAWING NO.: DG65C-C08                                  | SHEET                 | 1/1       |
| THIRD ANGLE PROJECTION |                       | MM (INCH)   | DO NOT SCALE DRAWING  | SCALE 1:1 |

H  
G  
F  
E  
D  
C  
B  
A

H  
G  
F  
E  
D  
C  
B  
A