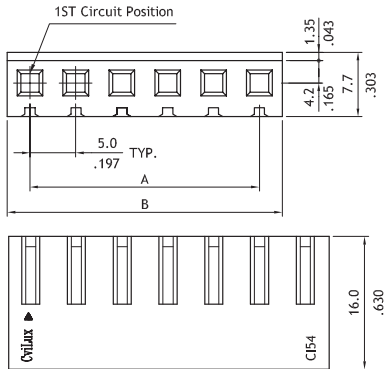
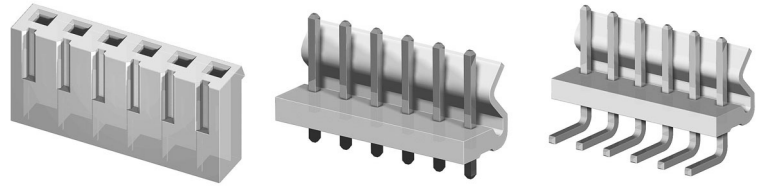


# CI54 Series 5.00mm(.197") Wire to Board Connectors

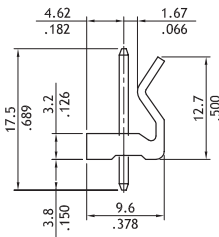
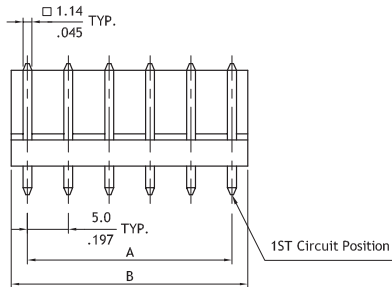
- Housing with locking ramp
- Header with locking wall
- Mate with CI54 , CI78 header
- Can be used CI51 crimp clip terminal
- Insulator: Nylon 66 UL 94V-2 , Color Nature
- With Tin plated 1.14mm square pin
- Terminal: Tin plated Brass

**RoHS** Compliant

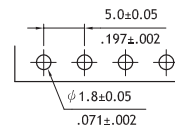
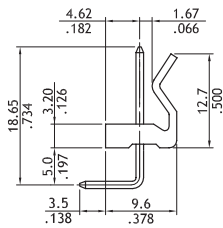
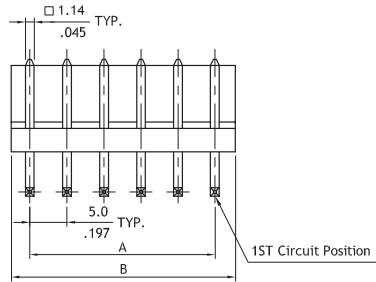
**RU** **RU** :E159616



Circuits	Dimension	
	A	B
2	5.0(.197)	10.0(.394)
3	10.0(.394)	15.0(.591)
4	15.0(.591)	20.0(.787)
5	20.0(.787)	25.0(.984)
6	25.0(.984)	30.0(1.181)
7	30.0(1.181)	35.0(1.378)
8	35.0(1.378)	40.0(1.575)
9	40.0(1.575)	45.0(1.772)
10	45.0(1.772)	50.0(1.969)



Circuits	Dimension	
	A	B
2	5.0(.197)	10.3(.406)
3	10.0(.394)	15.3(.602)
4	15.0(.591)	20.3(.799)
5	20.0(.787)	25.3(.996)
6	25.0(.984)	30.3(1.193)
7	30.0(1.181)	35.3(1.390)
8	35.0(1.378)	40.3(1.586)
9	40.0(1.574)	45.3(1.783)
10	45.0(1.771)	50.3(1.980)



Recommended P.C. Board Layout

## Ordering Code

**1** **2** **3** **4**  
**CI54 10 S 0000**

- 1 Series No.
- 2 No. of Circuits: 02 to 10
- 3 S= housing
- 4 Other options:  
0000= Standard  
\*Special options consult manufacturer

**1** **2** **3** **4** **5** **6**  
**CI54 10 P 1 V 00**

- 1 Series No.
- 2 No. of Circuits: 02 to 10
- 3 P= DIP header
- 4 Plating code: 1= Tin over Nickel
- 5 Type: V= Vertical  
H= Right angle
- 6 Other options: 00= Standard  
\*Special options consult manufacturer

# CI51 Series 3.96mm(.156") Wire to Board Connector

CI

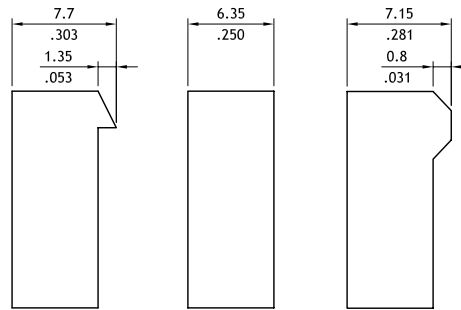
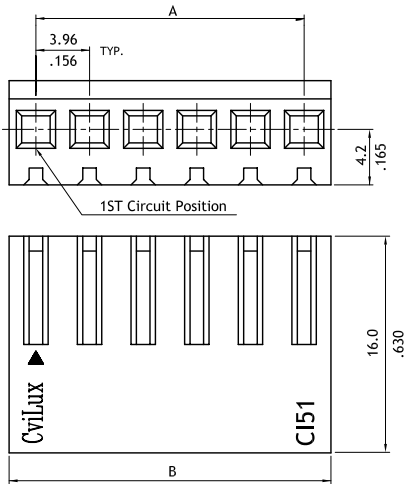
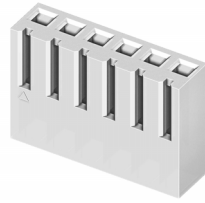
- With locking tab
- Mate with CI51, CI77 header
- Can be used CI51 crimp clip terminal
- Terminal accommodated AWG #18 ~ #24

### Construction

- Insulator: Nylon 66 UL 94V-2 , Color Nature
- Terminal: Tin plated Brass or Phosphor Bronze

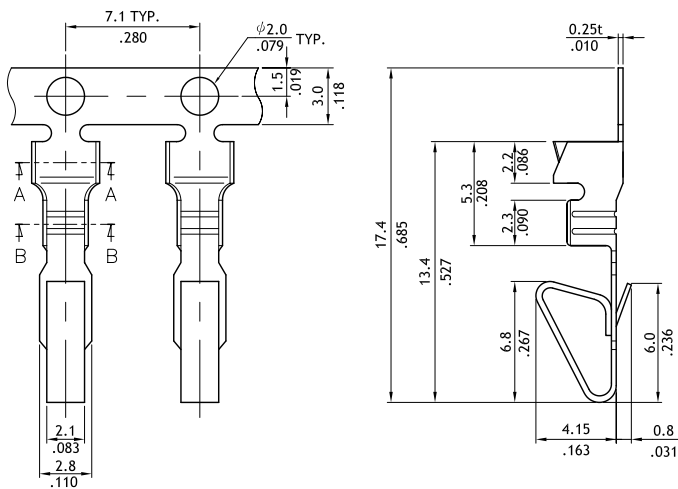
**RoHS** Compliant

**RU** :E159616

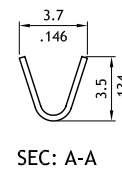


Circuits	Dimension	
	A	B
2	3.96(.156)	8.0(.315)
3	7.92(.312)	12.0(.472)
4	11.88(.468)	15.9(.626)
5	15.84(.624)	19.9(.783)
6	19.80(.780)	23.9(.941)
7	23.76(.935)	28.0(1.102)
8	27.72(1.091)	32.0(1.260)
9	31.68(1.247)	35.9(1.413)
10	35.64(1.403)	39.9(1.571)
11	39.60(1.559)	43.9(1.728)
12	43.56(1.715)	47.8(1.882)
13	47.52(1.871)	51.8(2.039)
14	51.48(2.027)	55.7(2.193)
15	55.44(2.183)	59.7(2.350)
16	59.40(2.339)	63.7(2.508)
17	63.36(2.494)	67.6(2.661)
18	67.32(2.650)	71.6(2.819)
19	71.28(2.806)	75.5(2.972)
20	75.24(2.962)	79.5(3.130)

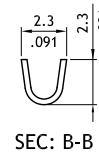
P/N:CI51\*\*S0000    P/N:CI51\*\*S000R    P/N:CI51\*\*S00DR



Part No.	Wire Range	Insulation	Thickness	Reel Q'ty
CI51T031*E0	AWG #18-#24	2.48 (.098) MAX.	0.25mm	5,000 PCS



SEC: A-A



SEC: B-B

## Ordering Code

**1**    **2**    **3**    **4**  
**CI51**   **20**   **S**   **0000**

- ① Series No.
- ② No. of Circuits: 02 to 20
- ③ S= Connector housing
- ④ Other options:  
 0000= With locking Ramp(Standard)  
 000R= Without locking Ramp  
 00DR= Low force locking Ramp  
 \*Special options Consult manufacturer

**1**    **2**    **3**    **4**    **5**    **6**  
**CI51**   **T03**   **1**   **B**   **E**   **0**

- ① Series No.
- ② Type: T03= AWG #18~#24
- ③ Plating : 1= Tin over Nickel plated
- ④ Material: B= Brass ; P=Phosphor Bronze
- ⑤ Plating method: E= Pre-tinned
- ⑥ Other options:  
 0= Standard

WIRE TO BOARD