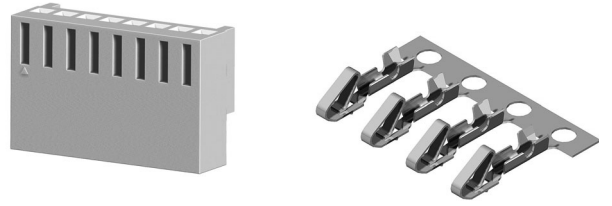


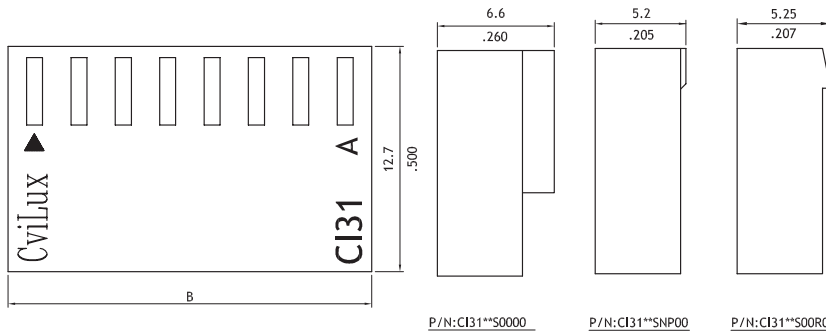
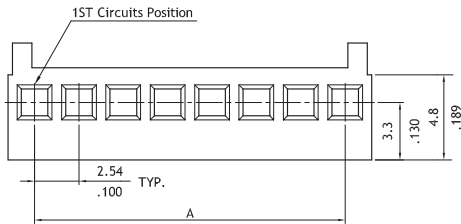
CI31 Series 2.54mm(.100") Wire to Board Connectors

- With locking tab
- Mate with CI31, CH31, CH83 header
- Can be used CI31 crimp clip terminal
- Insulator: Nylon 66 UL 94V-2 , Color Ivory
- Terminal: Tin plated Brass or Phosphor Bronze

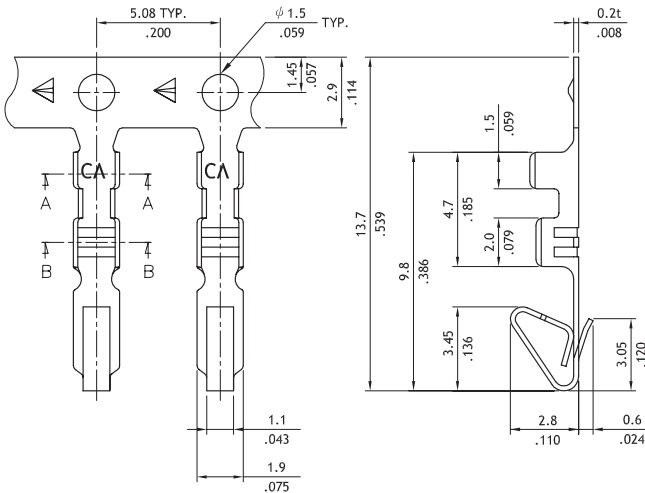
RoHS Compliant



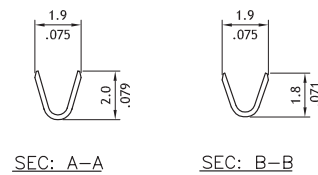
UL E159616



Circuits	Dimension	
	A	B
2	2.54(.100)	5.6(.220)
3	5.08(.200)	8.1(.319)
4	7.62(.300)	10.7(.421)
5	10.16(.400)	13.2(.520)
6	12.70(.500)	15.8(.622)
7	15.24(.600)	18.3(.720)
8	17.78(.700)	20.8(.819)
9	20.32(.800)	23.4(.921)
10	22.86(.900)	25.9(1.020)
11	25.40(1.000)	28.5(1.122)
12	27.94(1.100)	31.0(1.220)
13	30.48(1.200)	33.5(1.319)
14	33.02(1.300)	36.1(1.421)
15	35.56(1.400)	38.6(1.520)
16	38.10(1.500)	41.2(1.622)
17	40.64(1.600)	43.7(1.720)
18	43.18(1.700)	46.2(1.819)
19	45.72(1.800)	48.8(1.921)
20	48.26(1.900)	51.3(2.020)



Wire Range	Insulation Diameter	Reel Qty
AWG #22-#28	1.5 (.059) MAX.	10,000 PCS.



Ordering Code

1 **2** **3** **4**
CI31 20 S 0000

- ① Series No.
- ② No. of Circuits: 02 to 20
- ③ S= housing
- ④ Other options:
 0000= With Polarizing Ribs (Type 1)
 00R0= With Polarizing Ribs (Type 2)
 NP00= Without Polarizing Ribs
 *Special options consult manufacturer

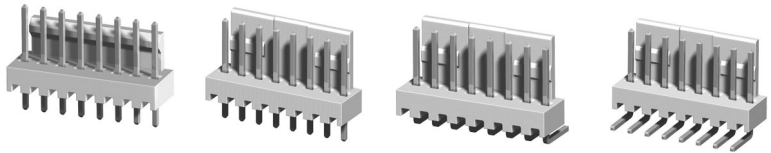
1 **2** **3** **4** **5** **6**
CI31 T02 1 B E 0

- ① Series No.
- ② Type: T02= AWG #22~#28
- ③ Plating: 1= Tin over Nickel
- ④ Material: B= Brass
 P= Phosphor Bronze
- ⑤ Plating method: E= Pre-tinned
- ⑥ Other options: 0= Standard

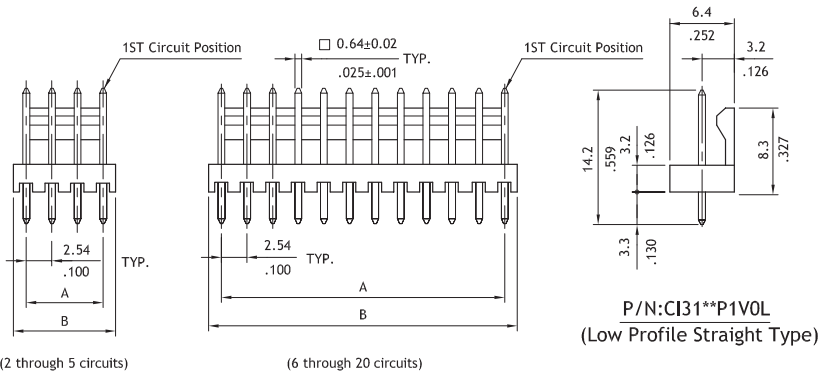
CI31 Series 2.54mm(.100") DIP Headers

- With locking wall
- Mate with CI31 housing
- Insulator: Nylon 66 UL 94V-2 , Color Ivory
- With Tin plated 0.64mm square pin

RoHS Compliant

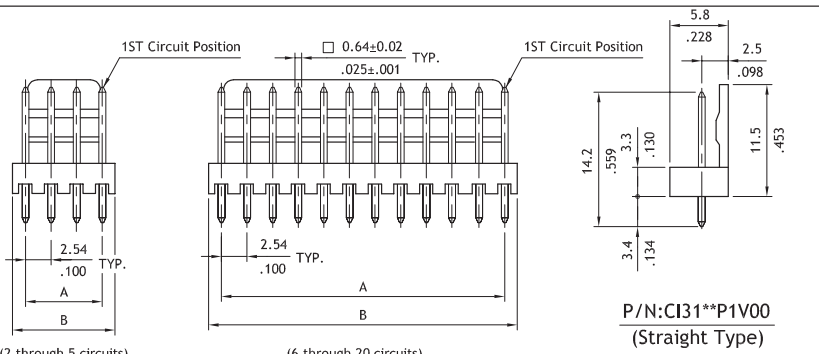


UL **UL** E159616



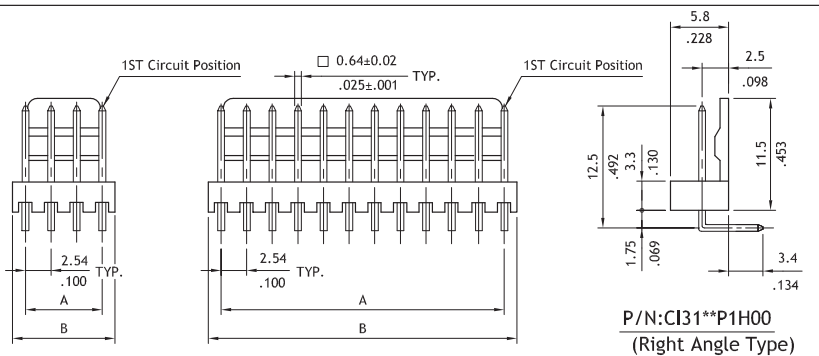
(2 through 5 circuits)

(6 through 20 circuits)



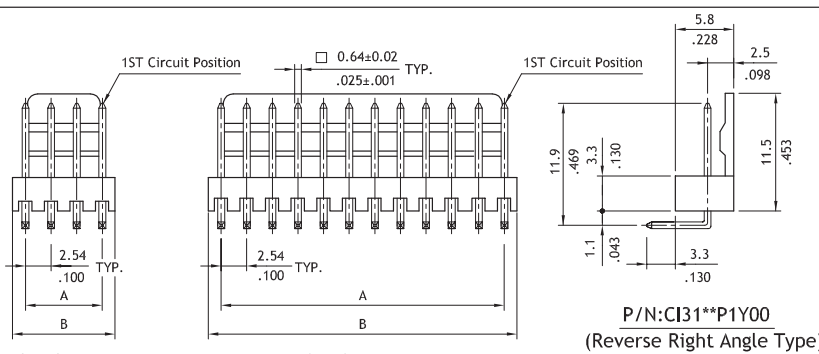
(2 through 5 circuits)

(6 through 20 circuits)



(2 through 5 circuits)

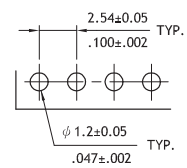
(6 through 20 circuits)



(2 through 5 circuits)

(6 through 20 circuits)

Circuits	Dimension	
	A	B
2	2.54(.100)	5.1(.201)
3	5.08(.200)	7.6(.299)
4	7.62(.300)	10.2(.402)
5	10.16(.400)	12.7(.500)
6	12.70(.500)	15.2(.598)
7	15.24(.600)	17.8(.701)
8	17.78(.700)	20.3(.799)
9	20.32(.800)	22.9(.902)
10	22.86(.900)	25.4(1.000)
11	25.40(1.000)	27.9(1.098)
12	27.94(1.100)	30.5(1.201)
13	30.48(1.200)	33.0(1.299)
14	33.02(1.300)	35.6(1.402)
15	35.56(1.400)	38.1(1.500)
16	38.10(1.500)	40.6(1.598)
17	40.64(1.600)	43.2(1.701)
18	43.18(1.700)	45.7(1.799)
19	45.72(1.800)	48.3(1.902)
20	48.26(1.900)	50.8(2.000)



Recommended P.C. Board Layout

CI

WIRE TO BOARD