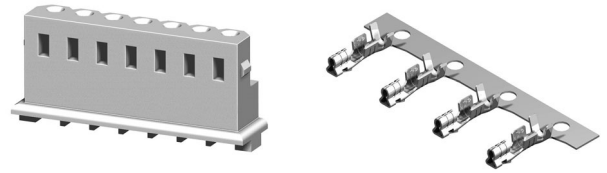


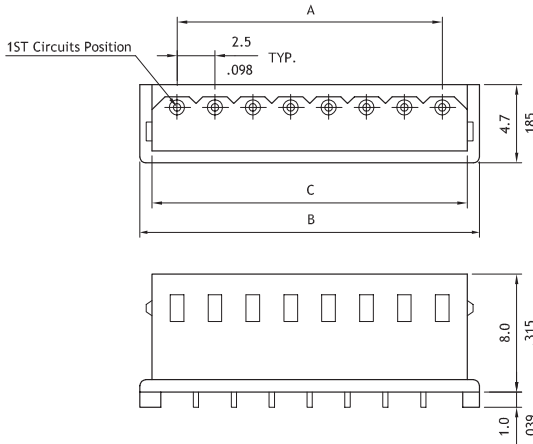
CI25 Series 2.50mm(.098") Wire to Board Connectors

- Low profile with locking ribs
- Mate with CI25 header
- Can be used CI25 crimp clip terminal
- Terminal accommodated AWG #22 ~ #28
- Insulator: Nylon 66 UL 94V-0 , Color Ivory
- Terminal: Tin plated Phosphor Bronze

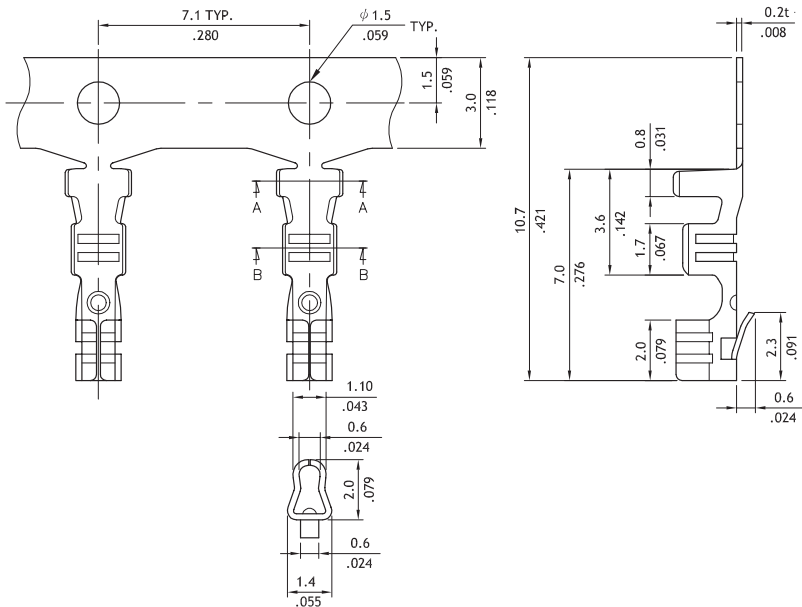


RoHS Compliant

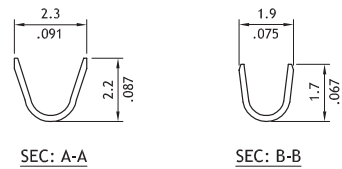
UL **UL** :E159616



Circuits	Dimension		
	A	B	C
2	2.5(.098)	7.4(.291)	5.9(.232)
3	5.0(.197)	9.9(.390)	8.4(.331)
4	7.5(.295)	12.4(.488)	10.9(.429)
5	10.0(.394)	14.9(.587)	13.4(.528)
6	12.5(.492)	17.4(.685)	15.9(.626)
7	15.0(.591)	19.9(.783)	18.4(.724)
8	17.5(.689)	22.4(.882)	20.9(.823)
9	20.0(.787)	24.9(.980)	23.4(.921)
10	22.5(.886)	27.4(1.079)	25.9(1.020)
11	25.0(.984)	29.9(1.177)	28.4(1.118)
12	27.5(1.083)	32.4(1.276)	30.9(1.217)
13	30.0(1.181)	34.9(1.374)	33.4(1.315)
14	32.5(1.280)	37.4(1.472)	35.9(1.413)
15	35.0(1.378)	39.9(1.571)	38.4(1.512)



Wire Range	Insulation Diameter	Reel Qty
AWG #22-#28	1.9 (.075) MAX.	10,000 PCS.



Ordering Code

1 **2** **3** **4**
CI25 15 S 0000

- ① Series No.
- ② No. of Circuits: 02 to 15
- ③ S= housing
- ④ Other options:
0000= Standard
*Special options consult manufacturer

1 **2** **3** **4** **5** **6**
CI25 T02 1 P E 0

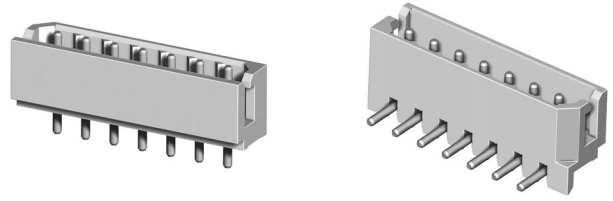
- ① Series No.
- ② Type: T02= AWG #22~#28
- ③ Plating: 1= Tin over Nickel
- ④ Material: P= Phosphor Bronze
- ⑤ Plating method: E= Pre-tinned
- ⑥ Other options: 0= Standard

CI25 Series 2.50mm(.098") DIP Headers

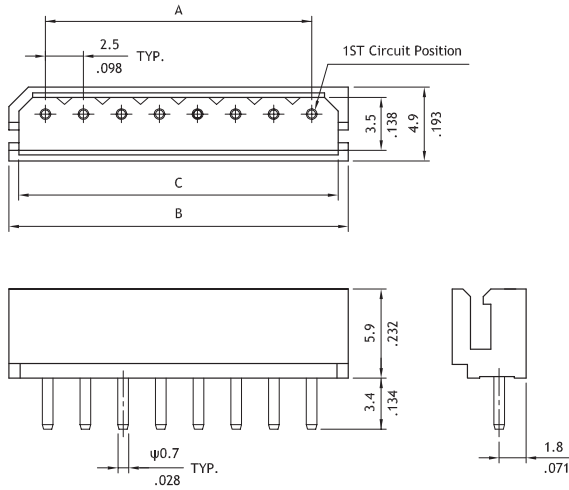
CI

- With locking slot
- Mate with CI25 housing
- Insulator: Polyamide UL 94V-0 , Color Ivory
- With Tin plated 0.7mm round pin
- Lead Free soldering process available

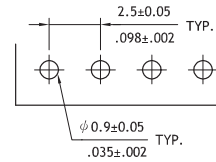
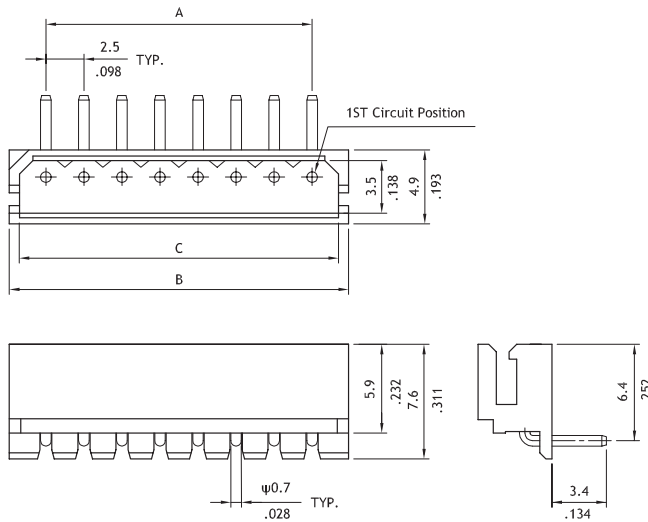
RoHS Compliant



RU **RU** :E159616



Circuits	Dimension		
	A	B	C
2	2.5(.098)	7.5(.295)	6.0(.236)
3	5.0(.197)	10.0(.394)	8.5(.335)
4	7.5(.295)	12.5(.492)	11.0(.433)
5	10.0(.394)	15.0(.591)	13.5(.531)
6	12.5(.492)	17.5(.689)	16.0(.630)
7	15.0(.591)	20.0(.787)	18.5(.728)
8	17.5(.689)	22.5(.886)	21.0(.827)
9	20.0(.787)	25.0(.984)	23.5(.925)
10	22.5(.886)	27.6(1.087)	26.0(1.024)
11	25.0(.984)	30.1(1.185)	28.5(1.122)
12	27.5(1.083)	32.6(1.283)	31.0(1.220)
13	30.0(1.181)	35.1(1.382)	33.5(1.319)
14	32.5(1.280)	37.6(1.480)	36.0(1.417)
15	35.0(1.378)	40.1(1.579)	38.5(1.516)



Recommended P.C. Board Layout

Ordering Code

1 **2** **3** **4** **5** **6** **7**
CI25 15 P 1 V 00 - LF

- 1 Series No.
- 2 No. of Circuits: 02 to 15
- 3 P= DIP header
- 4 Plating code:
1= Tin over Nickel

- 5 Type: V= Vertical
H= Right angle
- 6 Other options: 00= Standard
*Special options consult manufacturer

- 7 Porcess:
-LF= For Lead Free soldering process
* Empty code 7, if using Tin-Lead soldering process

WIRE TO BOARD