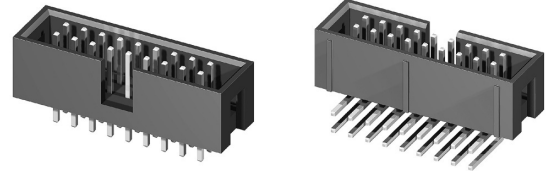


CH87 Series Dual Row Board Mount Pin Header

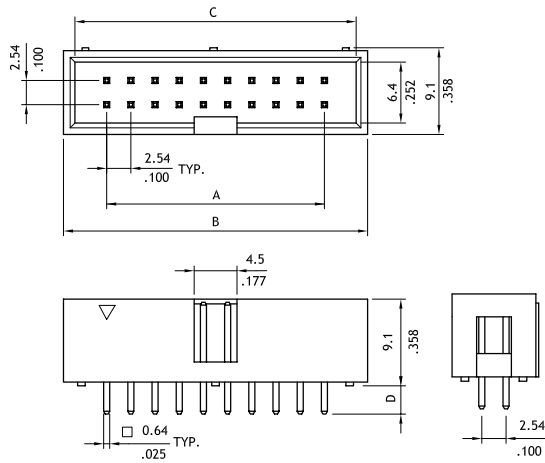
2.54mm(.100") Center spacing

- ⊙ Box type with polarizing slot
- ⊙ Mates with CB94,CA21

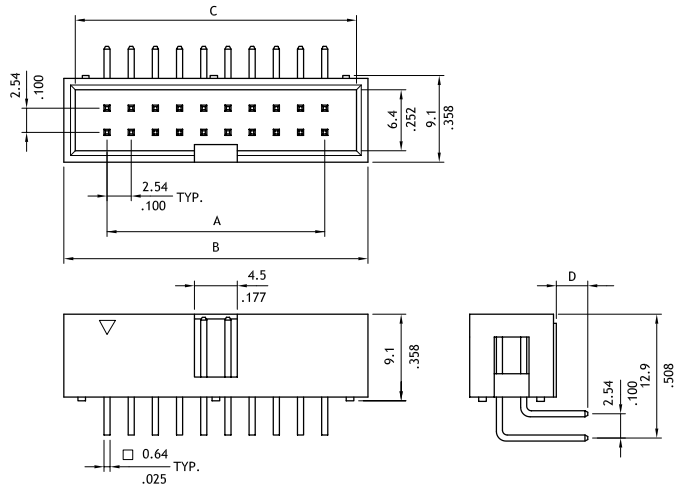
RoHS Compliant



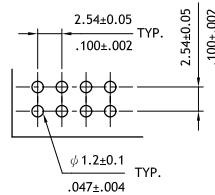
RU :E159616



A = 2.54 x No. of Spaces
 B = A + 10.16
 C = A + 7.86



A = 2.54 x No. of Spaces
 B = A + 10.16
 C = A + 7.86



Recommended P.C. Board Layout

Ordering Code

1 **2** **3** **4** **5** **6**
CH 8 7 **6 4** **2** **V** **1** **0 0**

- 1** Series No.
- 2** Circuits:
 (Available circuits: 8,10,14,16,20,24, 26,30,34,40,44,50, 50,60 and 64)
- 3** Plating code:
 2= Gold flash over Nickel plated
 *Optional plating available but MOQ requested
- 4** Tail Style:
 V= Straight DIP Type
 H= Right Angle DIP Type
- 5** Insulator Color:
 1= PBT UL 94V-0 , Color Black
 2= PBT UL 94V-0 , Color Black (RoHS Compliant)
- 6** Other options:
 00: Dim D= 3.1±0.2mm(standard)
 01: Dim D= 2.8± 0.2mm
 *Special options Consult manufacturer