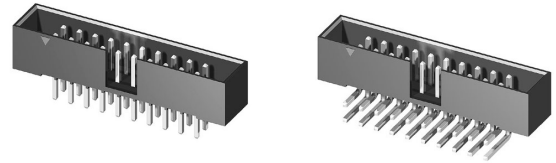


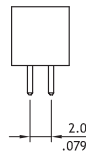
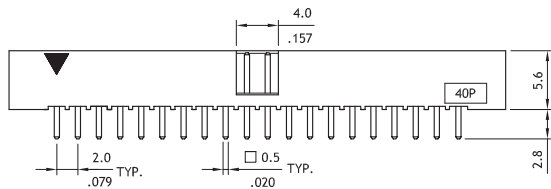
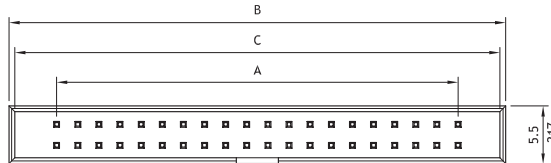
CH74 Series 2.00mm(.079") Dual Row Pin Headers

- Mates with CA11
- Lead Free soldering process available

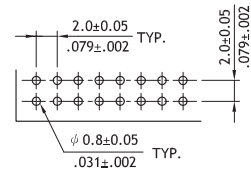
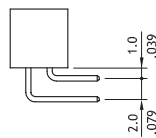
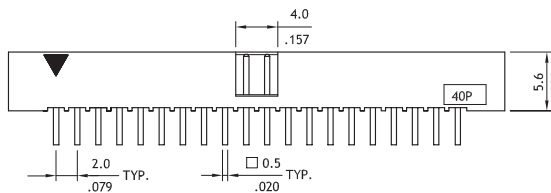
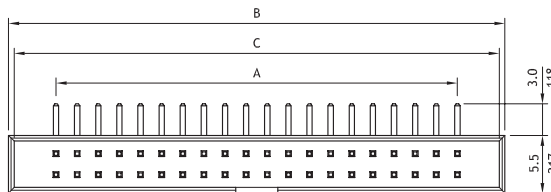
RoHS Compliant



RU :E159616



Circuits	Dimension		
	A	B	C
6	4.0(.157)	13.2(.520)	12.1(.476)
8	6.0(.236)	15.2(.598)	14.1(.555)
10	8.0(.315)	17.2(.677)	16.1(.634)
12	10.0(.394)	19.2(.756)	18.1(.713)
14	12.0(.472)	21.2(.835)	20.1(.791)
16	14.0(.551)	23.2(.913)	22.1(.870)
18	16.0(.630)	25.2(.992)	24.1(.949)
20	18.0(.709)	27.2(1.071)	26.1(1.028)
22	20.0(.787)	29.2(1.150)	28.1(1.106)
24	22.0(.866)	31.2(1.228)	30.1(1.185)
26	24.0(.945)	33.2(1.307)	32.1(1.264)
28	26.0(1.024)	35.2(1.386)	34.1(1.343)
30	28.0(1.102)	37.2(1.465)	36.1(1.421)
32	30.0(1.181)	39.2(1.543)	38.1(1.500)
34	32.0(1.260)	41.2(1.622)	40.1(1.579)
36	34.0(1.339)	43.2(1.701)	42.1(1.657)
40	38.0(1.496)	47.2(1.858)	46.1(1.815)
44	42.0(1.654)	51.2(2.016)	50.1(1.972)
50	48.0(1.890)	57.2(2.252)	56.1(2.209)
60	58.0(2.283)	67.2(2.646)	66.1(2.602)
64	62.0(2.441)	71.2(2.803)	70.1(2.760)
68	66.0(2.598)	75.2(2.961)	74.1(2.917)



Recommended P.C. Board Layout

Ordering Code

1 **2** **3** **4** **5** **6**
CH 7 4 6 8 2 V 1 0 0

- 1** Series No.
- 2** Circuits:
see above table
- 3** Plating code:
2= Gold flash over Nickel
*Optional plating available but MOQ requested
- 4** Tail Style:
V= Vertical Type
H= Right Angle Type
- 5** Color: 1= Black
- 6** Other options:
00= Standard
* See option code table
* Consult manufacturer for customized pin length

CH

BOARD TO BOARD