

CD51 Series Solder D-Sub

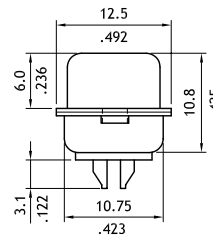
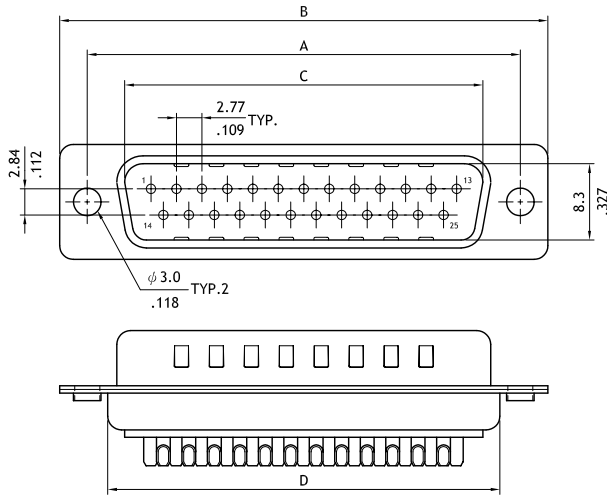
- ⊙ Intermateable with standard D-Sub
- ⊙ Metal shell and solder contacts
- ⊙ Option riveted Hex nuts available



RU E159616

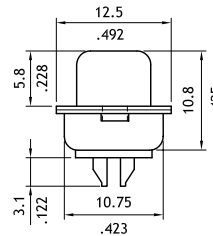
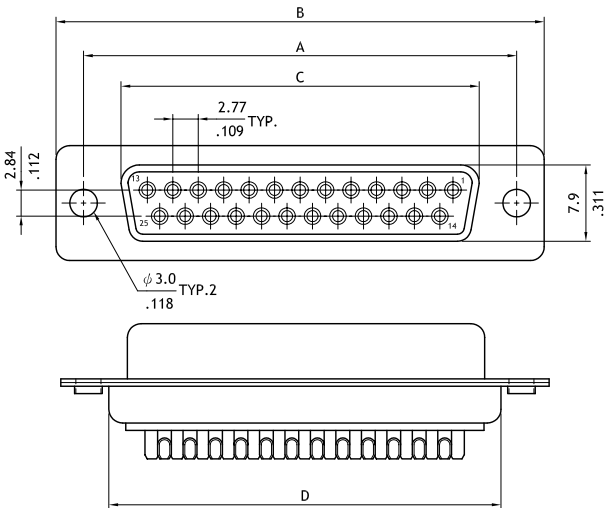
Plug Connector

Circuits	Dimension			
	A	B	C	D
9	25.00(.984)	30.8(1.213)	16.92(.666)	19.2(.756)
15	33.32(1.312)	39.2(1.543)	25.25(.994)	27.7(1.091)
25	47.04(1.852)	53.1(2.091)	38.96(1.534)	41.1(1.618)
37	63.50(2.500)	69.4(2.732)	55.42(2.182)	57.3(2.256)
50	61.00(2.402)	67.0(2.638)	52.81(2.079)	55.1(2.169)



Receptacle connector

Circuits	Dimension			
	A	B	C	D
9	25.00(.984)	30.8(1.213)	16.3(.642)	19.2(.756)
15	33.32(1.312)	39.2(1.543)	24.6(.969)	27.7(1.091)
25	47.04(1.852)	53.1(2.091)	38.3(1.508)	41.1(1.618)
37	63.50(2.500)	69.4(2.732)	54.8(2.157)	57.3(2.256)
50	61.00(2.402)	67.0(2.638)	52.2(2.055)	55.1(2.169)



Ordering Code

1 2 3 4 5 6
CD 5 1 2 5 P A 1 0 0

- | | | |
|---|--|---|
| <p>1 Series No.</p> <p>2 Contacts:
9,15,25,37,50</p> <p>3 Connector type:
P= Plug (Male)
S= Receptacle(Female)</p> | <p>4 Plating code:
A= Selective Gold flash over Nickel plated
*Optional plating available but MOQ requested</p> <p>5 Insulator Color:
1=Black
*Optional insulator color available but consult manufacturer</p> | <p>6 Other options:
00= with ø3.05mm holes on shell(Standard)
A0= Riveted #4-40 UNC close nuts on front shell
B0= Riveted #4-40 UNC open nuts on front shell
C0= Riveted #4-40 UNC open nuts on rear shell
*Special options Consult manufacturer</p> |
|---|--|---|

CD

I/O CONNECTOR