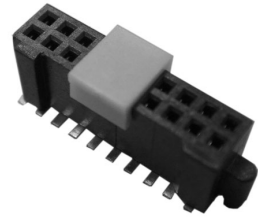


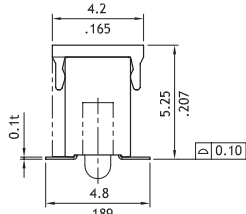
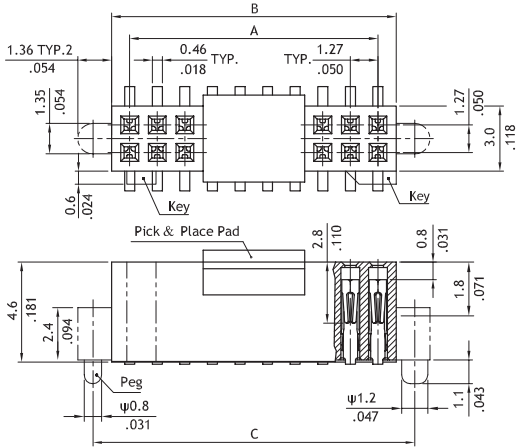
CBC1 Series Dual Row Female Headers

- Mates with CH51,CH52,CH53,CH57and CHC2 connectors
- Pick and Place Pad available
- High performance contact design
- Option with PCB pegs
- Lead Free soldering process available

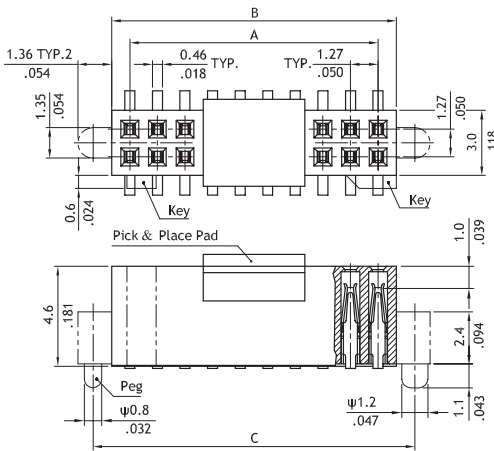


RoHS Compliant

P/N: CBC1**2M1*0-1*

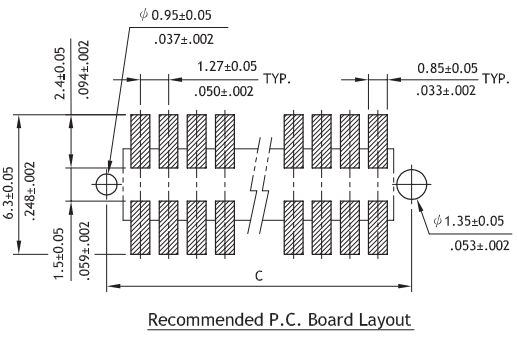


P/N: CBC1**2M1*0-2*



A = 1.27 X No. of Spaces
 B = A + 1.67
 C = A + 3.05

Without Key and Peg ; Without Pick & Place Pad	
With Key and Pegs ; Without Pick & Place Pad	
Without Key ; With Pegs ; Without Pick & Place Pad	
Without Key and Peg ; With Pick & Place Pad	
With Key and Pegs ; With Pick & Place Pad	
Without Key ; With Pegs ; With Pick & Place Pad	



Ordering Code

1 **2** **3** **4** **5** **6** **7** **8** **9**
CBC1 06 2 M 1 0 0 - 2 P

- 1** Series No.
- 2** Circuits: 2= Gold flash over Nickel
with keys: *Optional plating available but MOQ requested
10,20 ~ 100
- 3** Plating code: 2= Gold flash over Nickel
*Optional plating available but MOQ requested
- 4** Tail Style: X1= 100 M= SMT Type
- 5** Insulator Color :1= Black
06~100
- 6** Other options: 0= Without Key and Peg
1= With Keys and Pegs
2= Without key and with pegs
- 7** Other option: 0= Standard.
- 8** Pin size for mate Pin header: 1= 0.46mm Round Pin
2= 0.4mm Square Pin
- 9** 0= Without Pick & Place Pad (Tube packing)
P= With Pick & Place Pad (Tape & Reel)