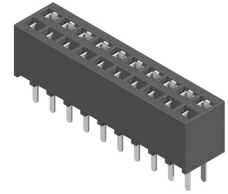


CB87 Series Dual Row Female Header

2.54mm(.100") Center spacing

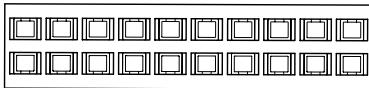
☉ Mates with CH81,CH84 and CH85



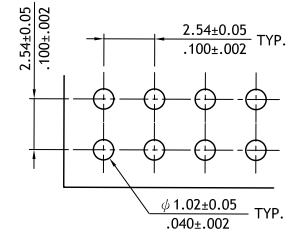
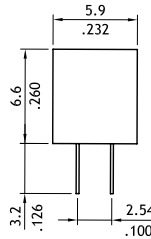
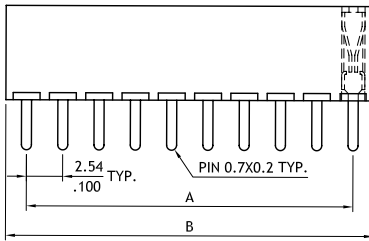
Ordering code

1	2	3	4	5	6
CB87	90	A	V	1	00

1 Series No.
2 Circuits: 04 to 90
3 Plating code: A=Selective Gold flash over Nickel plated
 *Optional plating available but MOQ requested
4 Tail Style: V= Straight
5 Color: 1= Black
6 Other options: 00= Standard
 *Special options consult manufacturer



A = 2.54 * No. of Spaces
 B = A + 2.5

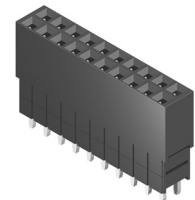


Recommended P.C. Board Layout

CB96 Series Dual Row Elevated Female Header

2.54mm(.100") Center spacing

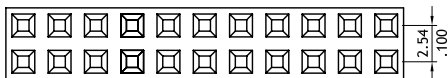
☉ Mates with CH81,CH84 and CH85



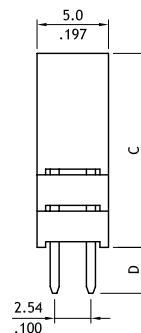
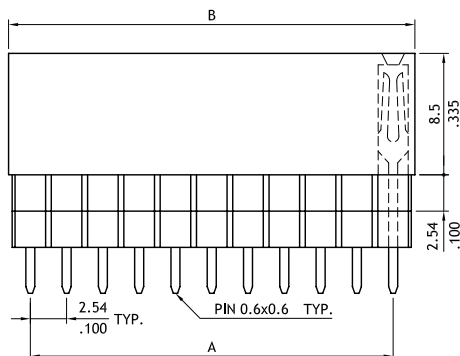
Ordering code

1	2	3	4	5	6
CB96	80	2	V	1	00

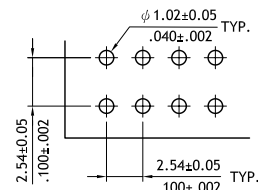
1 Series No.
2 Circuits: 06 to 80
3 Plating code: 2= Gold flash over Nickel plated
 *Optional plating available but MOQ requested
4 Tail Style: V= Straight
5 Color: 1= Black
6 Other options: 00= Standard
 *Special options consult manufacturer



A = 2.54 * No. of Spaces
 B = A + 3.04



Option Code	Dimension	
	C	D
00	11.05(.435)	2.3(.091)
1Y	11.05(.435)	7.3(.287)
2Y	13.59(.535)	4.8(.189)
3Y	16.13(.635)	2.3(.091)
1Z	11.05(.435)	12.2(.480)
2Z	13.59(.535)	9.6(.378)
3Z	16.13(.635)	7.1(.280)
4Z	18.67(.735)	4.6(.181)



Recommended P.C. Board Layout