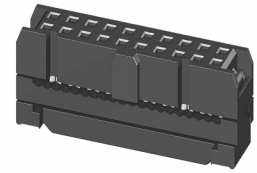


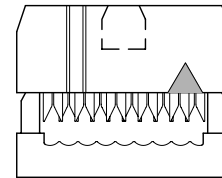
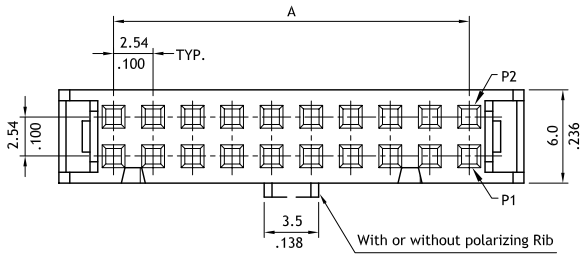
CA21 Series Flat Cable - IDC Socket

2.54mm (.100") Center Spacing

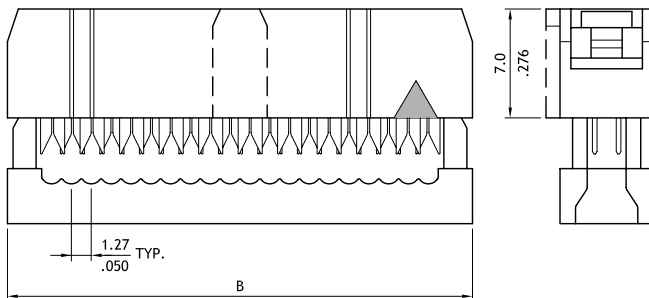
- ⊙ Mates with CH81, CH84, CH87 and CH88 headers
- ⊙ Can be used CW03 1.27mm(.050") Center Spacing ribbon cable



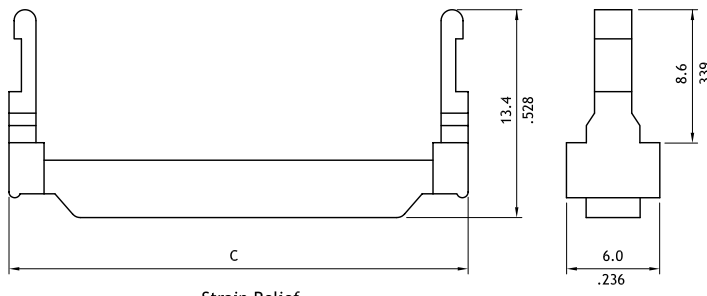
E159616



Available for 6,8,10,12 Circuits



Circuits	Dimension		
	A	B	C
6	5.08(.200)	12.2(.480)	12.2(.480)
8	7.62(.300)	14.7(.579)	14.7(.579)
10	10.16(.400)	17.3(.681)	17.3(.681)
12	12.70(.500)	19.8(.780)	19.8(.780)
14	15.24(.600)	22.3(.878)	22.3(.878)
16	17.78(.700)	24.9(.980)	24.9(.980)
20	22.86(.900)	30.0(1.181)	30.0(1.181)
24	27.94(1.100)	35.0(1.378)	35.0(1.378)
26	30.48(1.200)	37.6(1.480)	37.6(1.480)
30	35.56(1.400)	42.7(1.681)	42.7(1.681)
34	40.64(1.600)	47.7(1.878)	47.7(1.878)
40	48.26(1.900)	55.4(2.181)	55.4(2.181)
44	53.34(2.100)	60.4(2.378)	60.4(2.378)
50	60.96(2.400)	68.1(2.681)	68.1(2.681)
56	68.58(2.700)	75.7(2.980)	75.7(2.980)
60	73.66(2.900)	80.8(3.181)	80.8(3.181)
62	76.20(3.000)	83.3(3.280)	83.3(3.280)
64	78.74(3.100)	85.8(3.378)	85.8(3.378)



Strain Relief

Ordering Code

1 CA **2** 1 **3** **4** **5** **6**
CA 21 64 S A 1 00

- 1** Series No.
- 2** No. of Circuits: See drawing
- 3** Contact type: S= Socket
- 4** Plating code:
 A= Selective Gold flash over Nickel plated
 *Optional plating available but MOQ requested
- 5** Color: 1= Black
- 6** Other options:
 00= With Polarizing Rib (Standard)
 A0= Without Polarizing Rib
 *Special options Consult manufacturer

Strain Relief

1 CA **2** 1 **3** **4**
CA 21 64 SR 100

- 1** Series No.
- 2** Contacts: See drawing
- 3** SR= Strain-Relief
- 4** Color: 100= Black