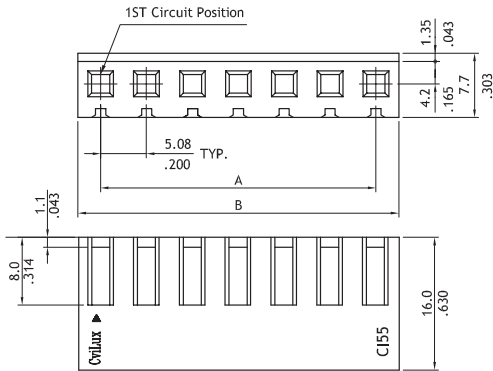
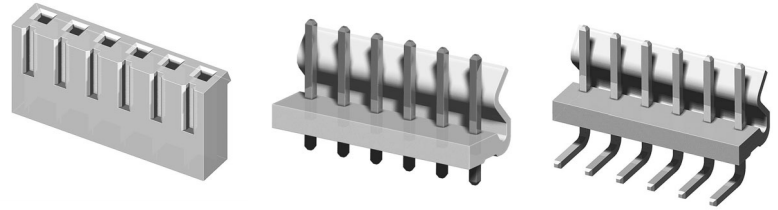


CI55 Series 5.08mm(.200") Wire to Board Connectors

- Housing with locking ramp
- Header with locking wall
- Can be used CI51 crimp clip terminal
- Insulator: Nylon 66 UL 94V-2 , Color Nature
- With Tin plated 1.14mm square pin
- Terminal: Tin plated Brass

RoHS Compliant

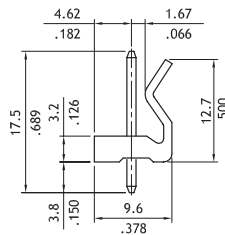
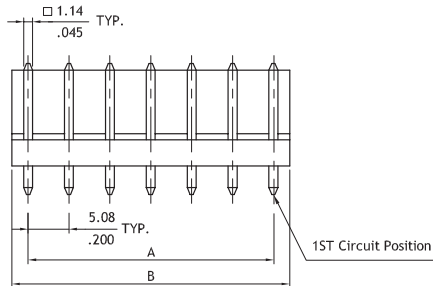
UL **UL** :E159616



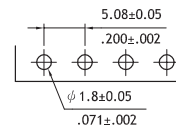
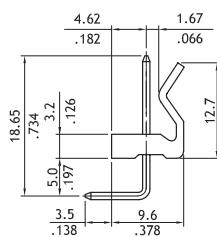
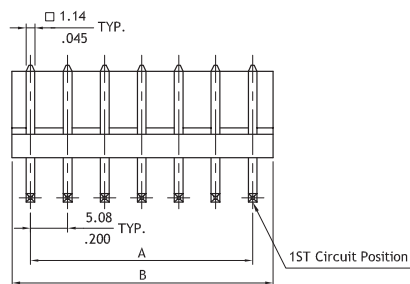
P/N:CI55**S0000

P/N:CI55**S000R

Circuits	Dimension	
	A	B
2	5.08(.200)	10.1(.398)
3	10.16(.400)	15.2(.598)
4	15.24(.600)	20.5(.807)
5	20.32(.800)	25.3(.996)
6	25.40(1.00)	30.6(1.205)
7	30.48(1.20)	35.5(1.398)
8	35.56(1.40)	40.8(1.606)
9	40.64(1.60)	45.6(1.795)
10	45.72(1.80)	50.7(1.996)



Circuits	Dimension	
	A	B
2	5.08(.200)	10.2(.402)
3	10.16(.400)	15.2(.598)
4	15.24(.600)	20.3(.799)
5	20.32(.800)	25.4(1.000)
6	25.40(1.000)	30.5(1.201)
7	30.48(1.200)	35.6(1.402)
8	35.56(1.400)	40.6(1.598)
9	40.64(1.600)	45.7(1.799)
10	45.72(1.800)	50.8(2.000)



Recommended P.C. Board Layout

Ordering Code

1 **2** **3** **4**
CI55 10 S 0000

- 1 Series No.
- 2 No. of Circuits: 02 to 10
- 3 S= housing
- 4 Other options:
 0000= Standard
 000R= without locking ramp
 *Special options consult manufacturer

1 **2** **3** **4** **5** **6**
CI55 10 P 1 V 00

- 1 Series No.
- 2 No. of Circuits: 02 to 10
- 3 P= DIP header
- 4 Plating code: 1= Tin over Nickel
- 5 Type: V= Vertical
 H= Right angle
- 6 Other options: 00= Standard
 *Special options consult manufacturer

CI51 Series 3.96mm(.156") Wire to Board Connector

CI

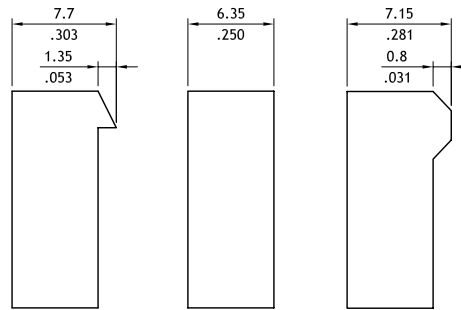
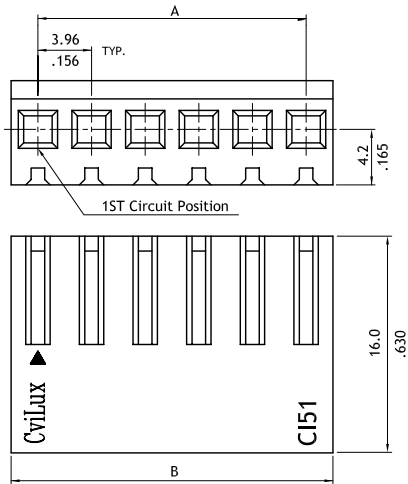
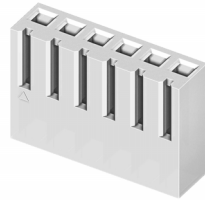
- With locking tab
- Mate with CI51, CI77 header
- Can be used CI51 crimp clip terminal
- Terminal accommodated AWG #18 ~ #24

Construction

- Insulator: Nylon 66 UL 94V-2 , Color Nature
- Terminal: Tin plated Brass or Phosphor Bronze

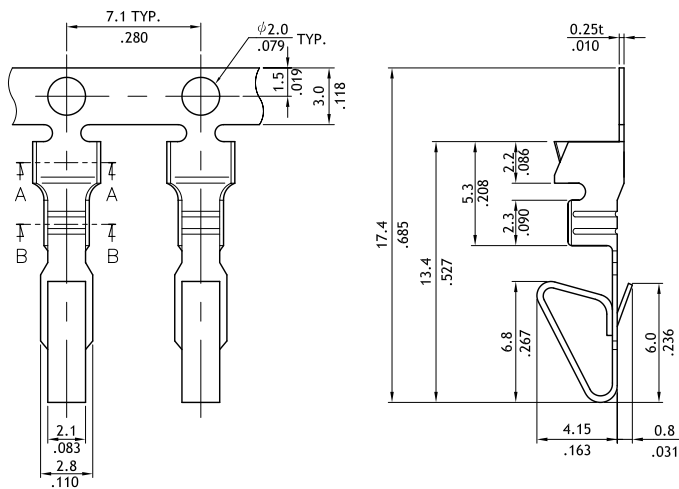
RoHS Compliant

:E159616

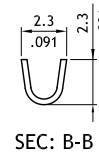
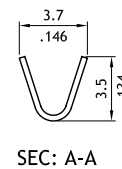


Circuits	Dimension	
	A	B
2	3.96(.156)	8.0(.315)
3	7.92(.312)	12.0(.472)
4	11.88(.468)	15.9(.626)
5	15.84(.624)	19.9(.783)
6	19.80(.780)	23.9(.941)
7	23.76(.935)	28.0(1.102)
8	27.72(1.091)	32.0(1.260)
9	31.68(1.247)	35.9(1.413)
10	35.64(1.403)	39.9(1.571)
11	39.60(1.559)	43.9(1.728)
12	43.56(1.715)	47.8(1.882)
13	47.52(1.871)	51.8(2.039)
14	51.48(2.027)	55.7(2.193)
15	55.44(2.183)	59.7(2.350)
16	59.40(2.339)	63.7(2.508)
17	63.36(2.494)	67.6(2.661)
18	67.32(2.650)	71.6(2.819)
19	71.28(2.806)	75.5(2.972)
20	75.24(2.962)	79.5(3.130)

P/N:CI51**S0000 P/N:CI51**S000R P/N:CI51**S00DR



Part No.	Wire Range	Insulation	Thickness	Reel Q'ty
CI51T031*E0	AWG #18-#24	2.48 (.098) MAX.	0.25mm	5,000 PCS



Ordering Code

1 **2** **3** **4**
CI51 20 S 0000

- ① Series No.
- ② No. of Circuits: 02 to 20
- ③ S= Connector housing
- ④ Other options:
 0000= With locking Ramp(Standard)
 000R= Without locking Ramp
 00DR= Low force locking Ramp
 *Special options Consult manufacturer

1 **2** **3** **4** **5** **6**
CI51 T03 1 B E 0

- ① Series No.
- ② Type: T03= AWG #18~#24
- ③ Plating : 1= Tin over Nickel plated
- ④ Material: B= Brass ; P=Phosphor Bronze
- ⑤ Plating method: E= Pre-tinned
- ⑥ Other options:
 0= Standard

WIRE TO BOARD