



SDS3D18 SERIES

Low Profile Shielded Power Inductors



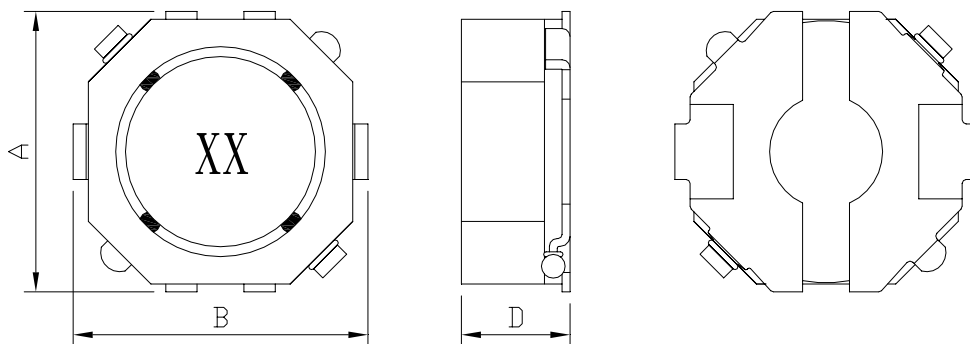
RoHS Compliant

PART NUMBERING SYSTEM

SDS	3D18	—	6 R 8 N	—	LF
TYPE	DIMENSIONS		INDUCTANCE		LEAD FREE

SHAPES AND DIMENSIONS

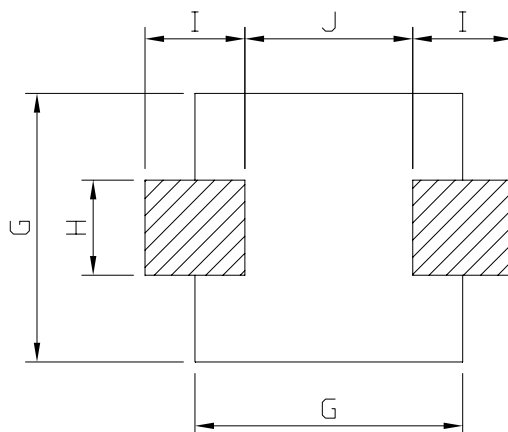
UNIT : mm



A=4.0 Max. B=4.0 Max. D=1.8 Max.

RECOMMENDED PATTERNS

UNIT : mm



G=4.0 H=1.5 I=1.4 J=2.0



SDS3D18 SERIES

Low Profile Shielded Power Inductors



RoHS Compliant

ELECTRICAL CHARACTERISTICS :

PART NUMBER	INDUCTANCE (μ H)	DCR (m Ω) Max.(Typ.)	Isat (A) (Max.)	Irms (A) (Max.)	Stamp
SDS3D18-1R2N-LF	1.2 \pm 30%	88(70)	2.00	1.90	1R2
SDS3D18-1R8N-LF	1.8 \pm 30%	100(80)	1.80	1.80	1R8
SDS3D18-2R2N-LF	2.2 \pm 30%	113(90)	1.60	1.70	2R2
SDS3D18-2R7N-LF	2.7 \pm 30%	125(100)	1.40	1.55	2R7
SDS3D18-3R3N-LF	3.3 \pm 30%	138(110)	1.20	1.45	3R3
SDS3D18-3R9N-LF	3.9 \pm 30%	150(120)	1.10	1.35	3R9
SDS3D18-4R7N-LF	4.7 \pm 30%	162(130)	1.00	1.25	4R7
SDS3D18-5R6N-LF	5.6 \pm 30%	181(145)	0.95	1.15	5R6
SDS3D18-6R8N-LF	6.8 \pm 30%	200(160)	0.90	1.05	6R8
SDS3D18-8R2N-LF	8.2 \pm 30%	225(180)	0.80	0.95	8R2
SDS3D18-100M-LF	10 \pm 20%	250(200)	0.75	0.85	100
SDS3D18-120M-LF	12 \pm 20%	337(270)	0.65	0.70	120
SDS3D18-150M-LF	15 \pm 20%	393(315)	0.60	0.65	150
SDS3D18-180M-LF	18 \pm 20%	437(350)	0.55	0.60	180
SDS3D18-220M-LF	22 \pm 20%	563(450)	0.50	0.55	220
SDS3D18-270M-LF	27 \pm 20%	637(510)	0.45	0.45	270
SDS3D18-330M-LF	33 \pm 20%	712(570)	0.40	0.40	330
SDS3D18-390M-LF	39 \pm 20%	956(765)	0.38	0.35	390
SDS3D18-470M-LF	47 \pm 20%	1100(880)	0.32	0.30	470

- Inductance tested at 100 kHz, 0.1 Vrms, 0 Adc using an Agilent/HP 4263B LCR meter or equivalent.
- Isat : DC current at which the inductance drops 30% (typ) from its value without current.
- Iirms: The actual current when temperature of coil becomes Δ 40 $^{\circ}$ C . (Ta=+20 $^{\circ}$ C)
- Operating temperature range -40 $^{\circ}$ C to +85 $^{\circ}$ C , Electrical specifications at 20 $^{\circ}$ C.
- Packing : 13" reel, machine-ready ,embossed plastic tape (3,000 parts per full reel).