



SDR1307K SERIES

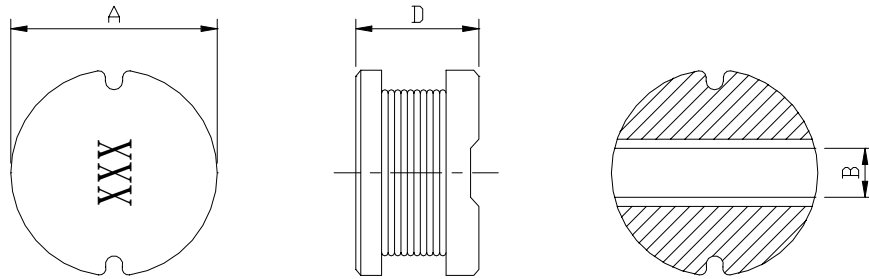


PART NUMBERING SYSTEM

SDR	1 3 0 7 K	—	1 0 2 K
TYPE	DIMENSIONS		INDUCTANCE

SHAPES AND DIMENSIONS

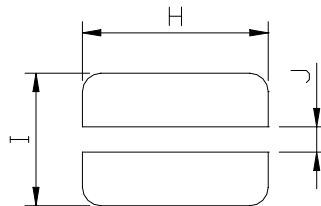
UNIT : mm



A=13.3 Max. B=5.0 Typ. D=7.30 Max.

RECOMMENDED PATTERNS

UNIT : mm



H=14.0 Max. I=14.0 Max. J=4.5 Ref.



SDR1307K SERIES

SPECIFICATION TABLE

PART NUMBER	INDUCTANCE (μ H)	Q Ref.	DCR (m Ω) (max)	IDC (A) (max)	TEST FREQ. (MHz)
SDR1307K-1R5M	1.5	20	5.0	20.00	7.96
SDR1307K-2R2M	2.2	22	6.0	18.00	7.96
SDR1307K-2R7M	2.7	24	8.0	16.00	7.96
SDR1307K-3R3M	3.3	26	8.7	15.00	7.96
SDR1307K-4R7M	4.7	25	10.0	13.00	7.96
SDR1307K-5R6M	5.6	24	15.0	11.00	7.96
SDR1307K-6R8M	6.8	24	17.0	10.50	7.96
SDR1307K-8R2M	8.2	24	19.0	9,80	7.96
SDR1307K-100M	10	22	21.0	9.20	2.52
SDR1307K-120M	12	25	30.0	8.00	2.52
SDR1307K-150M	15	28	34.0	7.50	2.52
SDR1307K-180M	18	28	36.0	7.00	2.52
SDR1307K-220M	22	40	47.0	6.50	2.52
SDR1307K-270K	27	35	60.0	5.50	2.52
SDR1307K-330K	33	35	65.0	5.00	2.52
SDR1307K-390K	39	28	75.0	4.60	2.52
SDR1307K-470K	47	24	82.0	4.20	2.52
SDR1307K-560K	56	22	100.0	3.80	2.52
SDR1307K-680K	68	24	120.0	3.50	2.52
SDR1307K-820K	82	18	140.0	3.20	2.52
SDR1307K-101K	100	25	180.0	3.00	0.796

- ※ Test Frequency 100KHz ; Test Voltage 0.1V.
- ※ Operating Temperature Range : -40 $^{\circ}$ C to +105 $^{\circ}$ C.
- ※ Storage Temperature : -40 $^{\circ}$ C to +125 $^{\circ}$ C.
- ※ Rated Current ind. Drop 10% typ.
- ※ Inductance Tolerance : M \pm 20% ; K \pm 10%.



SDR1307K SERIES

SPECIFICATION TABLE

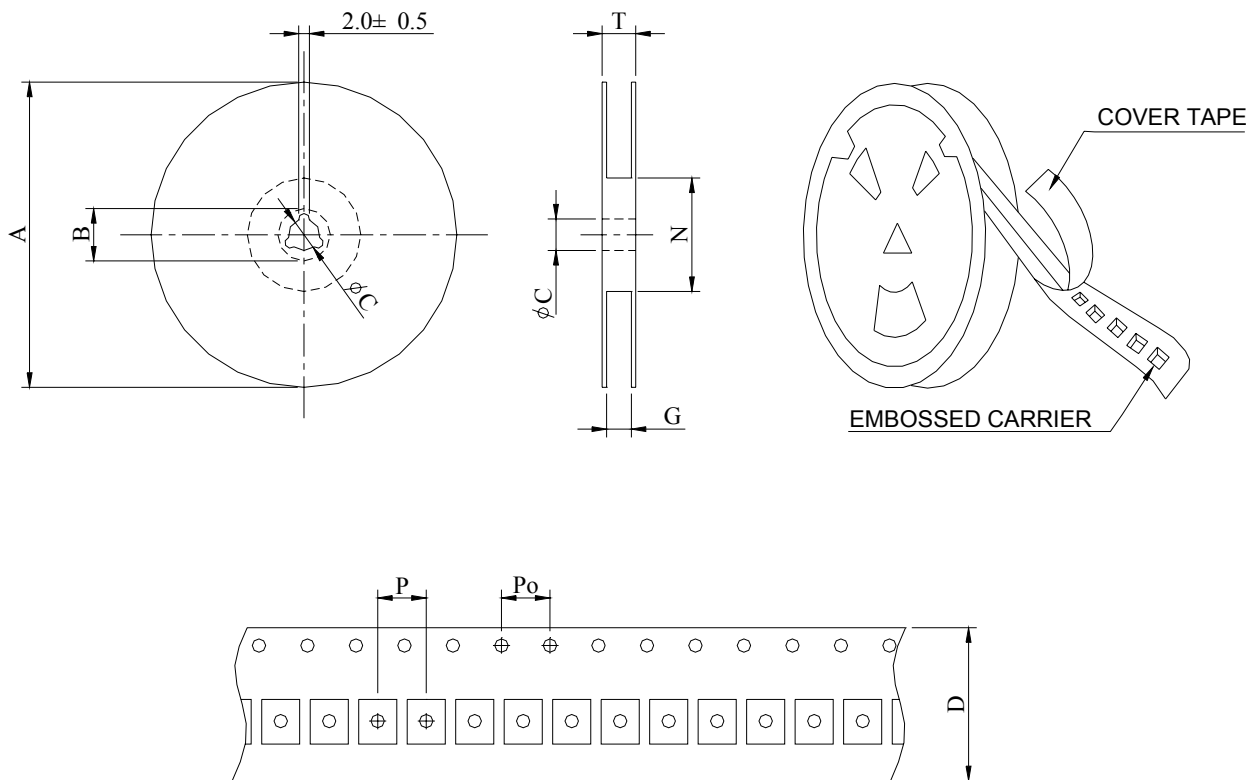
PART NUMBER	INDUCTANCE (μ H)	Q Ref.	DCR (m Ω) (max)	IDC (A) (max)	TEST FREQ. (MHz)
SDR1307K-121K	120	20	210.0	2.80	0.796
SDR1307K-151K	150	20	250.0	2.60	0.796
SDR1307K-181K	180	18	280.0	2.30	0.796
SDR1307K-221K	220	15	360.0	2.10	0.796
SDR1307K-271K	270	15	410.0	1.80	0.796
SDR1307K-331K	330	15	520.0	1.60	0.796
SDR1307K-391K	390	12	600.0	1.50	0.796
SDR1307K-471K	470	12	720.0	1.40	0.796
SDR1307K-561K	560	10	880.0	1.30	0.796
SDR1307K-681K	680	10	1000.0	1.20	0.796
SDR1307K-821K	820	10	1300.0	1.10	0.796
SDR1307K-102K	1000	10	1600.0	1.00	0.252

- ※ Test Frequency 100KHz ; Test Voltage 0.1V.
- ※ Operating Temperature Range : -40 $^{\circ}$ C to +105 $^{\circ}$ C.
- ※ Storage Temperature : -40 $^{\circ}$ C to +125 $^{\circ}$ C.
- ※ Rated Current ind. Drop 10% typ.
- ※ Inductance Tolerance : M \pm 20% ; K \pm 10%.



SDR1307K SERIES

PACKAGING SPECIFICATION



SERIES	Q' TY (PCS)	DIMENSIONS (m/m)								
		A	B±0.8	C±0.5	D	G ⁺⁰	N ⁻⁰	P	Po	T
SDR1307K	400	330	21	13	24	26	50	12	4	30.4