

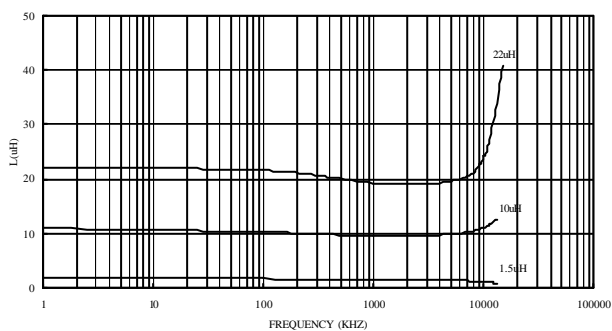
Electrical Characteristics

Part Number	Inductance ① (mH)	Tolerance (±%)	DC Resistance () max.	Self Resonant ② Frequency (MHz) Typ	Isat ③ (A)	Irms ④ (A)
SSL0804HC-R33M-S	0.33	20	0.002	300	20.0	16.0
SSL0804HC-R68M-S	0.68	20	0.005	200	13.0	12.0
SSL0804HC-1R0M-S	1.0	20	0.006	100	11.0	10.0
SSL0804HC-1R5M-S	1.5	20	0.008	90	9.0	9.0
SSL0804HC-2R2M-S	2.2	20	0.011	90	7.8	7.4
SSL0804HC-2R7M-S	2.7	20	0.012	65	7.0	6.6
SSL0804HC-3R3M-S	3.3	20	0.014	65	6.4	5.9
SSL0804HC-4R7M-S	4.7	20	0.018	45	5.4	4.8
SSL0804HC-6R8M-S	6.8	20	0.035	35	3.6	5.0
SSL0804HC-100M-S	10.0	20	0.04	26	3.3	4.3
SSL0804HC-150M-S	15.0	20	0.06	21	2.4	3.5
SSL0804HC-220M-S	22.0	20	0.08	17	2.0	2.8
SSL0804HC-330M-S	33.0	20	0.15	14	1.7	2.1
SSL0804HC-470M-S	47.0	20	0.28	12	1.4	1.7
SSL0804HC-680M-S	68.0	20	0.3	9	1.2	1.5
SSL0804HC-101M-S	100.0	20	0.4	7	0.95	1.2

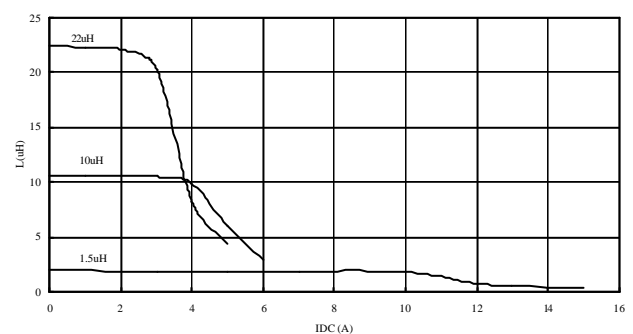
- Inductance tested at 100 kHz, 0.1 Vrms.
- SRF measured using HP8753D network analyzer
- Inductance drop = 10% typ. at Isat.
- T = 40 typ at I rms.
- Operating temperature range -40 to +85
- Electrical specifications at 25

Test Instruments :

INDUCTANCE vs. FREQUENCY CHARACTERISTICS

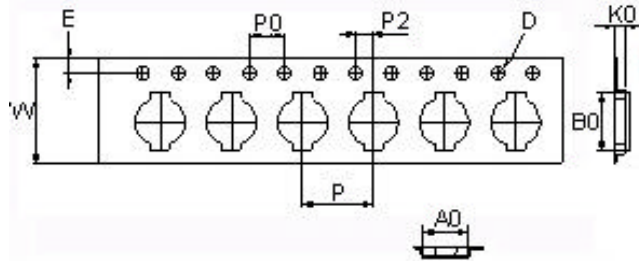


INDUCTANCE vs. IDC CHARACTERISTICS

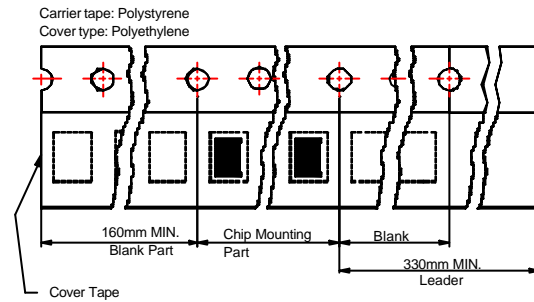


Packaging Specifications

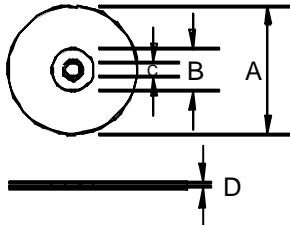
Tape Dimensions



Tape Material



Reel Dimensions



Dimensions in mm

TPYE	Tape Dimensions							Reel Dimensions				Quantity PCS / REEL
	K0	D	E	W	P	P0	P2	A	B	C	D	
SSL0503HC	5.3	1.55	1.75	16	12	4	2	330	100	13	17.4	1000
SSL0804HC	6.1	1.55	1.75	24	16	4	2	330	100	13	24.2	750
SSL1306HC	7.2	1.55	1.75	44	24	4	2	330	100	13	45.4	250

Reliability Test – Power Inductors

SMD Power Inductor

- SDT/ SSL/ SSL_HC/ SCD/ SCMD/ SCDS/ SDS/ SDT/ SLF series

1-1.Mechanical Performances

No	Item	Specification	Test Method
1-1-1	Vibration	Appearance: No damage Inductance: within $\pm 0\%$ of initial value Q change: within $\pm 0\%$ of initial value	Test device shall be soldered on the substrate Oscillation Frequency: 10 to 55 to 10Hz for 1min Amplitude: 1.5mm Time: 2hrs for each axis (X, Y & Z), total 6hrs
1-1-2	Resistance to Soldering Heat	Appearance: No damage	Pre-heating: 150 , 1min Solder Composition: Sn/Pb = 63/37 Solder Temperature: 260 \pm Immersion Time: 10 \pm sec
1-1-3	Solder ability	The electrodes shall be at least 90% covered with new solder coating	Pre-heating: 150 , 1min Solder Composition: Sn/Pb = 63/37 Solder Temperature: 230 \pm Immersion Time: 4 \pm sec

1-2.Environmental Performances

No	Item	Specification	Test Method															
1-2-1	Temperature Shock	Appearance: No damage Inductance: within $\pm 0\%$ of initial value Q change: within $\pm 0\%$ of initial value	10 cycles (Air to Air) 1 cycles shall consist of: 30 minutes exposure to -55 30 minutes exposure to 125 15 seconds maximum transition between temperatures Measured after exposure in the room condition for 24hrs															
1-2-2	Temperature Cycle		One cycle: <table border="1"> <thead> <tr> <th>Step</th> <th>Temperature ()</th> <th>Time (min)</th> </tr> </thead> <tbody> <tr> <td>1</td> <td>-25 \pm</td> <td>30</td> </tr> <tr> <td>2</td> <td>25 \pm</td> <td>3</td> </tr> <tr> <td>3</td> <td>85 \pm</td> <td>30</td> </tr> <tr> <td>4</td> <td>25 \pm</td> <td>3</td> </tr> </tbody> </table> Total: 100cycles Measured after exposure in the room condition for 24hrs	Step	Temperature ()	Time (min)	1	-25 \pm	30	2	25 \pm	3	3	85 \pm	30	4	25 \pm	3
Step	Temperature ()	Time (min)																
1	-25 \pm	30																
2	25 \pm	3																
3	85 \pm	30																
4	25 \pm	3																
1-2-3	Humidity Resistance		Temperature: 40 \pm Relative Humidity: 90 ~ 95% Time: 1000hrs Measured after exposure in the room condition for 24hrs															
1-2-4	High Temperature Resistance		Temperature: 85 \pm Relative Humidity: 20% Applied Current: Rated Current Time: 1000hrs Measured after exposure in the room condition for 24hrs															

Reliability Test – Power Inductors

No	Item	Specification	Test Method
1-2-5	Low Temperature Resistance		Temperature: -25 ℃ Relative Humidity: 0% Time: 1000hrs Measured after exposure in the room condition for 24hrs