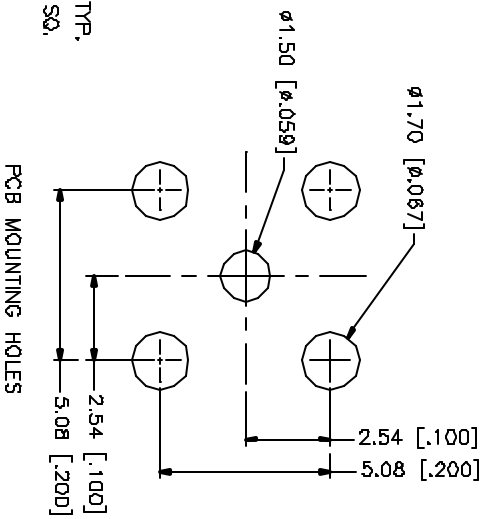
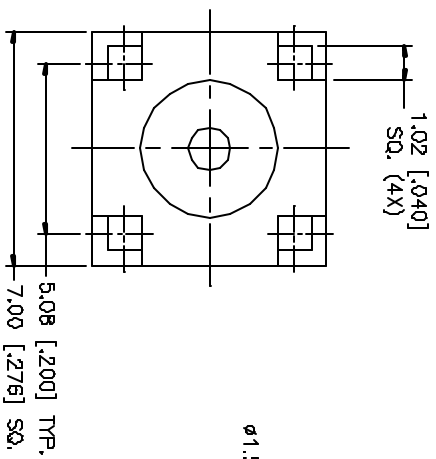
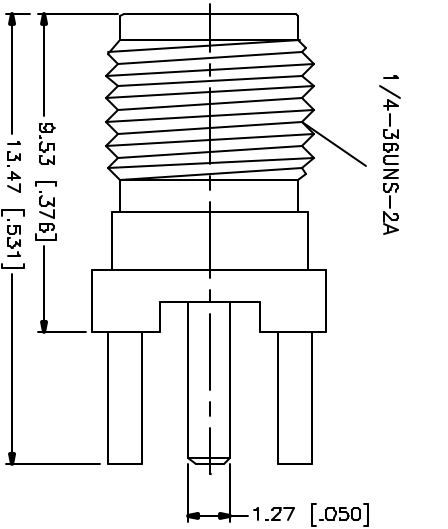


REV.	DATE	DESCRIPTION
A	04/31/03	UPDATE DRAWING FORMAT
B	11/29/04	MODIFY FLANGE TO 7.0mm SQUARE



REV.	DESCRIPTION	MATERIAL	FINISH	QTY
B				
7				
6				
5	RING	BRASS	GOLD	1
4	INSULATOR	TEFLON	NATURAL	1
3	CONTACT PIN	BER. COPPER	GOLD	1
2	INSULATOR	TEFLON	NATURAL	1
1	BODY	BRASS	GOLD	1
	DESCRIPTION	MATERIAL	FINISH	QTY

<p>USING DIMENSIONS SPECIFIED THROUGHOUT THIS DRAWING UNLESS OTHERWISE SPECIFIED IN THE NOTES AND THE CUSTOMER REFERENCE ONLY.</p> <p>UNLESS OTHERWISE SPECIFIED DIMENSIONS FOR MATERIALS ARE:</p> <p>0.15 - BRONZE ± 0.25mm 0 - 30mm ± 0.40mm 30 - 125mm ± 0.50mm</p> <p>UNLESS OTHERWISE SPECIFIED DIMENSIONS FOR FINISH ARE:</p> <p>.020 - .315 ± 0.007" .315 - 1.180 ± 0.015" 1.180 - 4.724 ± 0.020"</p>	<p>APPROVALS</p> <p>DRAWN G.R.S.</p> <p>CHECKED</p> <p>ASSEMBLED</p> <p>PREPARED 1 OF 1</p>	<p>DATE</p> <p>11/29/04</p>
<p>DO NOT SCALE DRAWING</p>	<p>CAD FILE</p> <p>G:/132/13134.DWG</p>	<p>DWG. NO.</p> <p>132134.DWG</p>
<p>Amphenol Connex</p> <p>SMA P.C.B JACK (EXTENDED LEGS)</p> <p>PART NO. 132134</p>		
REV. B	SIZE A	SCALE NA