

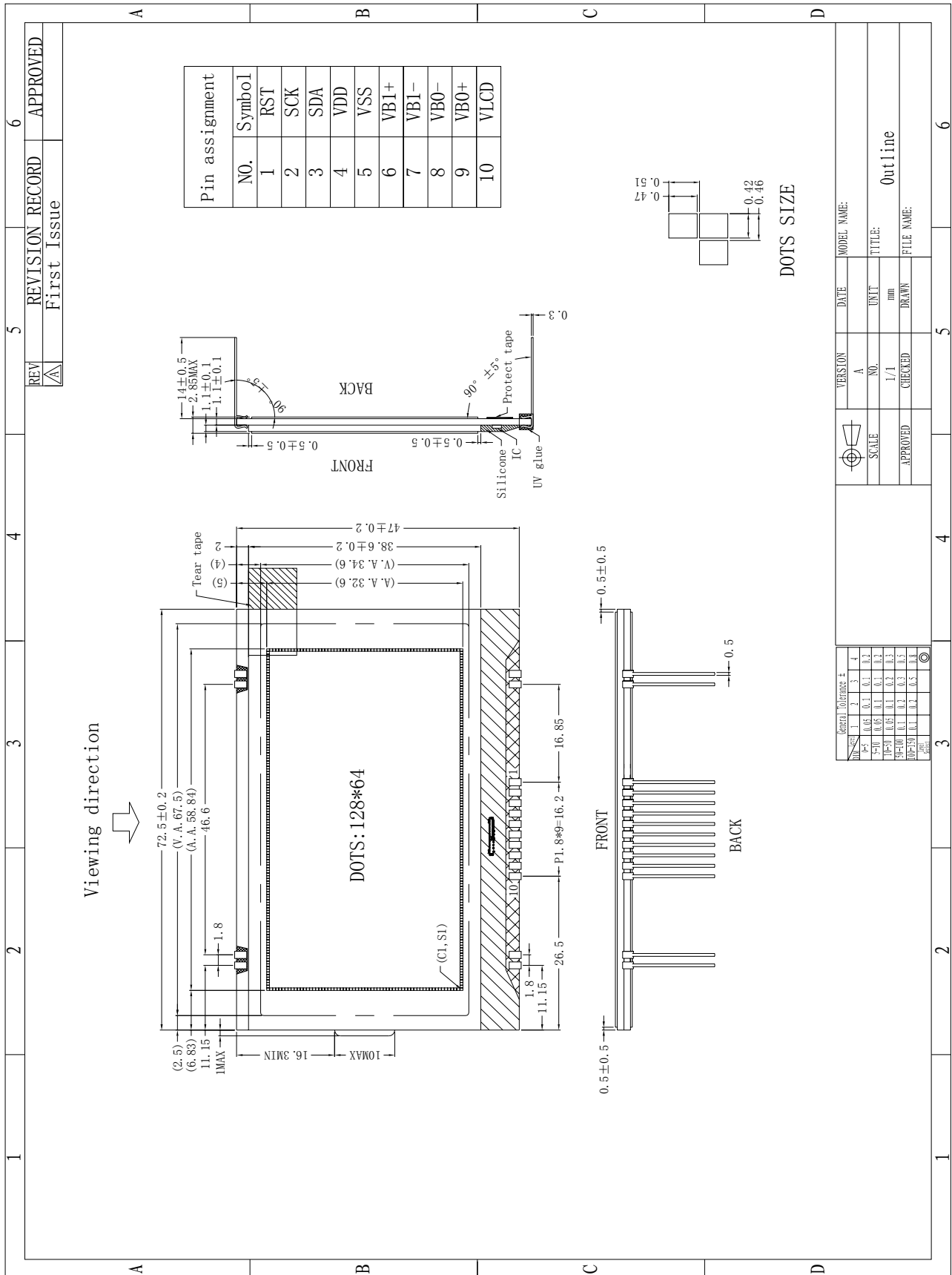
Revision Status

Version	Revise Date	Page	Content	Modified By

1. General Specification

No.	Item	Specification	Unit
1	Outline Dimension	72.5(W) x 47(H) x2.85MAX (D) (Not included the PIN)	mm
2	View Dimension	67.5(H) x 34.6(V)	mm
3	Active Area	58.84(H)x32.6(V)	mm
4	Dot Size	0.42(H)x0.47(V)	mm
5	Dot pitch	0.46(H)x0.51(V)	mm
6	Number of dots	128(H) x 64(V)	
7	Display Type	FSTN	-
8	Viewing Direction	12 O'Clock	-
9	Polarizer Mode	Transflective/Positive	-
10	LCD Drive method	1/65 duty, 1/9 bias	-
11	LCD Drive Voltage	9.0	V
12	Operation Temperature	From -30To 60	°C
13	Storage Temperature	From -35 To 70	°C
14	Driver/Controller IC	UC1601S	-
15	Logic Power Supply Voltage	3.3	V
16	Backlight Unit	N/A	-

2. OUTLINE DIMENSION



REV	REVISION RECORD	APPROVED
△	First Issue	

VERSION	DATE	MODEL NAME:
A		
NO.	UNIT	TITLE:
1/1	mm	Outline
APPROVED	CHECKED	FILE NAME:

General Tolerance #				
Unit	1	2	3	4
mm	±0.1	±0.1	±0.1	±0.2
mm	±0.05	±0.1	±0.1	±0.2
mm	±0.05	±0.1	±0.2	±0.3
mm	±0.1	±0.2	±0.3	±0.5
mm	±0.1	±0.2	±0.5	±0.8
mm	±0.1	±0.2	±0.5	±0.8