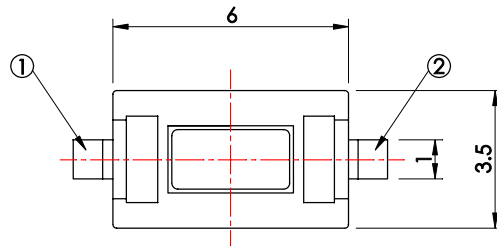


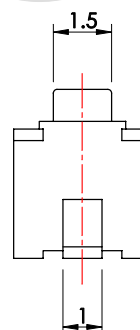
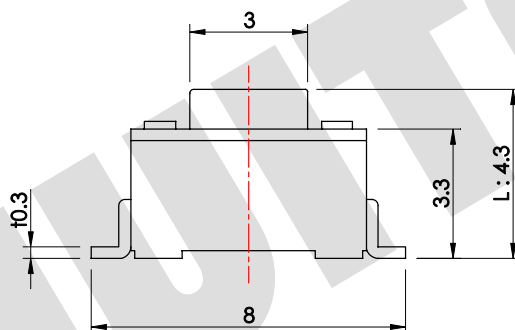
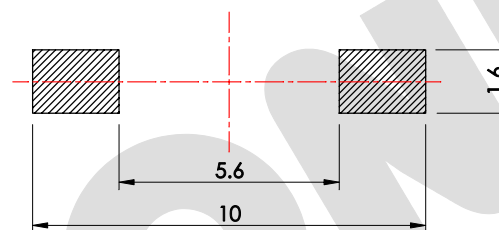
\*開關產品未經SWITRONIC同意，請勿拆解，否則無法負品質及安全責任。  
Please do not decompose the switch without any permission from SWITRONIC, otherwise the quality and safety responsibility could not be guaranteed.

\*本圖面若與目錄之規格尺寸不符，以本圖面規格尺寸為主。  
Below is our main specification if different from catalog.

CIRCUIT DIAGRAM



P.C.B. LAYOUT



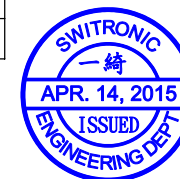
**SPECIFICATION**

**Rating:** 50mA 12V DC.  
**Function:** OFF-(ON).  
**Travel:** 0.25±0.1mm.  
**Contact resistance:** 100mΩ Max.(initial)  
**Operating force:** 180±50g.  
**Minimum load:** 10mA 3.3V DC.(reference only)  
**Life:** 50,000 Cycles.  
**Soldering temperature:** 250°C Max. for 3 sec.  
**Soldering time:** 1 time only.  
**Note1:** Unwashable, don't be immersed by epoxy and organic solvent.  
**Note2:** Please check the actual size, do not scale the drawing page.

RoHS compliant

IT-1101NEX-XXXG-G

MODEL NO.	L	OPERATING FORCE
□	4.3	160,180, 250
A	5	



EV2.2	△		
EV2.1	無	圖面更新	2015.04.14
EV2.0	無	新繪製	2012.09.20
版本 VER.	符號 SYMBOL	修改內容 ALTERATION	更新日期 DATE

產品 PRODUCT		Tact Switch		型號 MODEL NO.		IT-1101NE-180G-G	
製圖 DRAWN BY	核圖 CHECKED BY	主管 APPROVED BY		單位 UNIT	mm		
Allen Liao	Chuck Young	Margaret Lee		比例 SCALE	5 : 1		
				公差 TOLERANCE	±0.3mm		

**SWITRONIC**<sup>®</sup>  
INDUSTRIAL CORP.  
**Switches**



一綺電子企業股份有限公司

總公司：110 台北市信義路四段415號13樓之3  
13F-3 NO. 415, SEC. 4, HSIN YI ROAD, TAIPEI, TAIWAN  
TEL : 886-2-27290229 (Rep.) FAX : 886-2-27582086  
URL : http://www.switronic.com.tw  
E-MAIL : switches@ms36.hinet.net