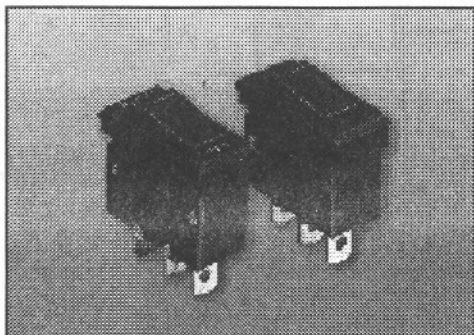


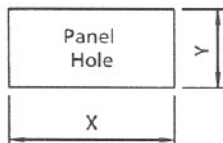
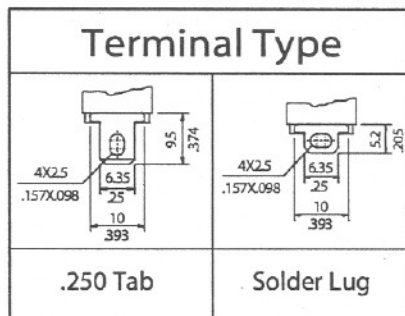
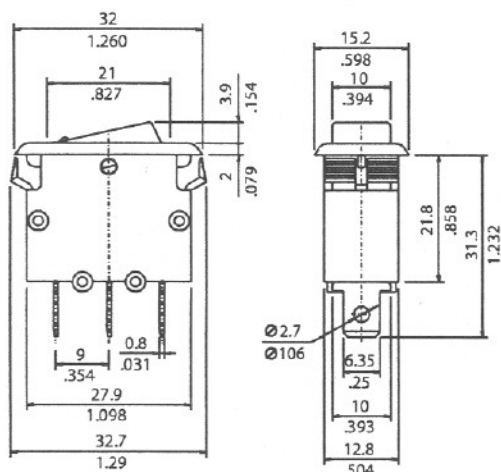
SWITRONIC

M1 Series Rocker Switch Circuit Breaker



M1 Series

Capacity Correction Factors For Ambient Temperature								
Current Rating Amps	Temperature							
	çK	+50	+68	+77	+86	+104	+122	+140
5 to 15 A	.90	.95	1.00	1.10	1.32	1.61	2.15	



Panel Thickness (mm)	Dim.X (mm)	Dim.Y (mm)
0.75~1.25	28.5~28.6	13.5~13.6
1.25~2.0	28.6~28.7	13.5~13.6
2.0~3.0	28.8~28.9	13.5~13.6

Ordering Information

