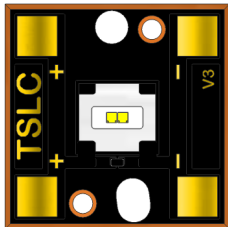




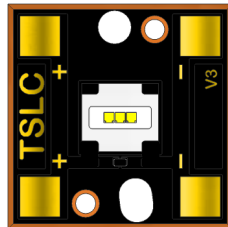
# A6370L-C0W1 High Brightness Headlamp

## Introduction

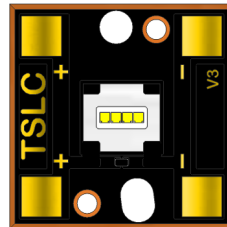
A6370 is a packaged LED component tailored to, but not limited to automotive exterior lighting. This high brightness product has a seamless, uniform light pattern and is designed with exceptional thermal stability to accommodate the stringent quality requirements of the automotive industry.



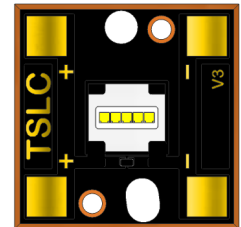
A6370L-C0W1-C0F21N



A6370L-C0W1-C0F31N



A6370L-C0W1-C0F41N



A6370L-C0W1-C0F51N

## Features & Applications

- Multiple brightness options for design flexibility
- High lumen maintenance at high temperature
- Optimized lumen density
- Lambertian radiation pattern
- ESD - withstand voltage: up to 18 kV
- Applications: Exterior automotive lighting and floodlighting

## Table of Contents

Characteristics .....	1
Mechanical Dimensions .....	2
Color Bin Definitions .....	3
Relative Spectral Power Distribution .....	3
Typical Relative Luminous Flux vs. Forward Current .....	4
Typical Relative Luminous Flux vs. Case Temperature .....	4
Color Shift vs. Case Temperature .....	5
Color Shift vs. DC Drive Current .....	6

**RoHS Compliant**

## Characteristics

### Absolute Maximum Ratings (Tc = 25°C)

Parameter	Rating
	A6370L-C0W1 Series
DC Forward Current (mA)	1000 mA
LED Junction Temperature	150°C
LED Operating Temperature	-40°C ~ 125°C
Storage Temperature	-40°C ~ 125°C
Preconditioning	Acc. to JEDEC Level 1

### Luminous Flux and Forward Voltage (Tc = 25°C)

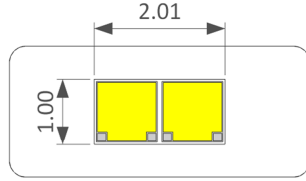
Part number	Color	Performance at Test Current (1000mA)				
		Group	Luminous Flux (lm)		VF (V)	
			Min	Max	Min	Max
A6370L-C0W1 -C0F21N	Cool White	NVH	440	480	6	8
		NVI	480	520	6	8
		NVJ	520	560	6	8
A6370L-C0W1 -C0F31N	Cool White	NWH	650	700	9	12
		NWI	700	750	9	12
		NWJ	750	800	9	12
		NWK	800	850	9	12
A6370L-C0W1 -C0F41N	Cool White	NWM	900	950	12	16
		NWN	950	1000	12	16
		NGK	1000	1100	12	16
A6370L-C0W1 -C0F51N	Cool White	NGL	1100	1200	15	20
		NHA	1200	1300	15	20
		NHB	1300	1400	15	20

- Note: 1. Luminous Flux is measured with an accuracy of  $\pm 10\%$   
 2. The forward voltage is measured with an accuracy of  $\pm 0.2V$

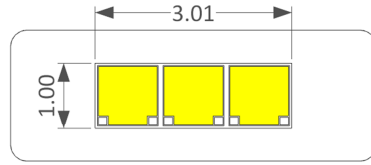


## Mechanical Dimensions

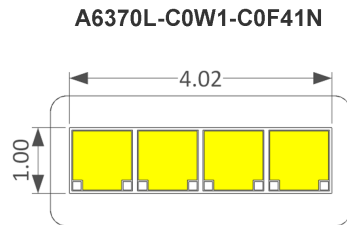
### Light Emitting Area



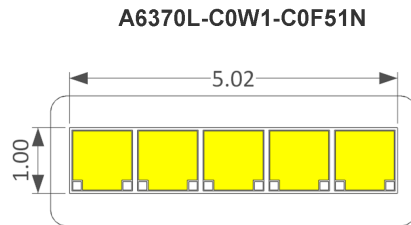
A6370L-C0W1-C0F21N



A6370L-C0W1-C0F31N

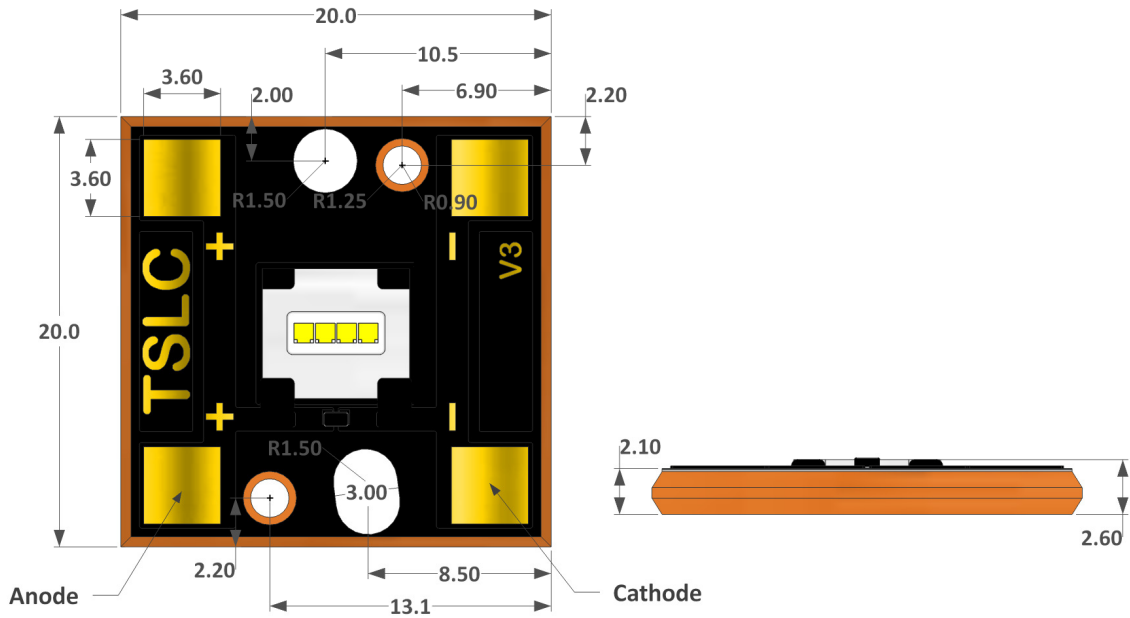


A6370L-C0W1-C0F41N



A6370L-C0W1-C0F51N

### A6370L-C0W1 Dimensions

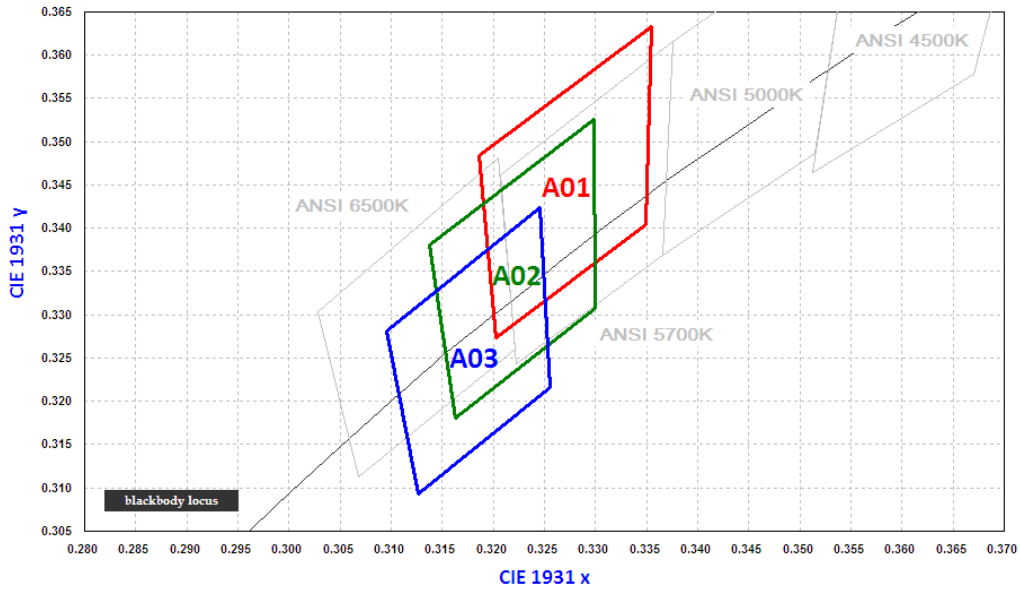


Notes :

1. Drawing is not to scale
2. All dimensions are in millimeter
3. Dimensions are  $\pm 0.13\text{mm}$  unless otherwise indicated

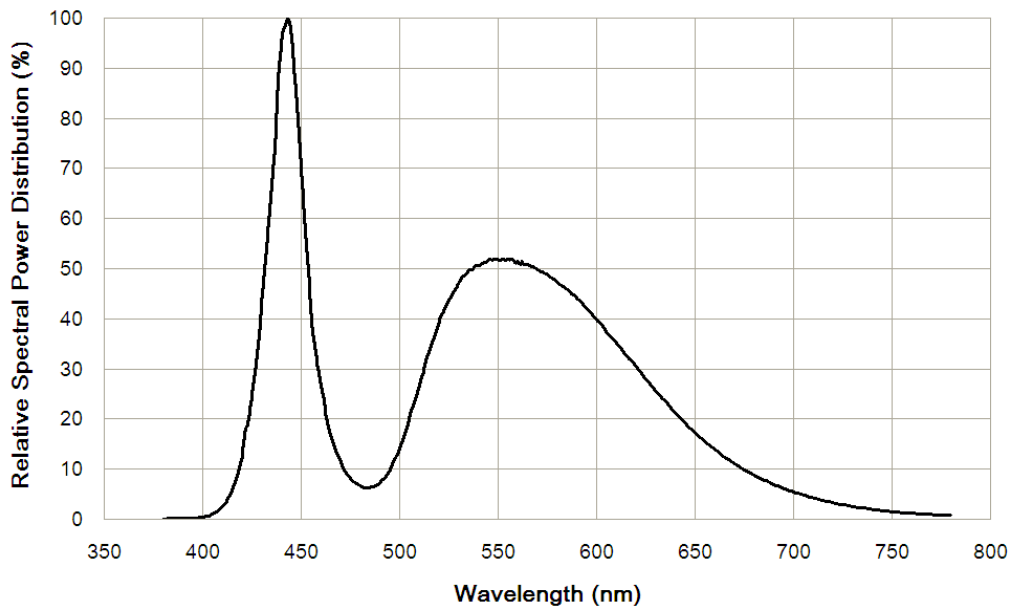


**Color Bin Definitions,  $T_c=25^\circ\text{C}$ , 1000 mA Pulsed (15 msec)**

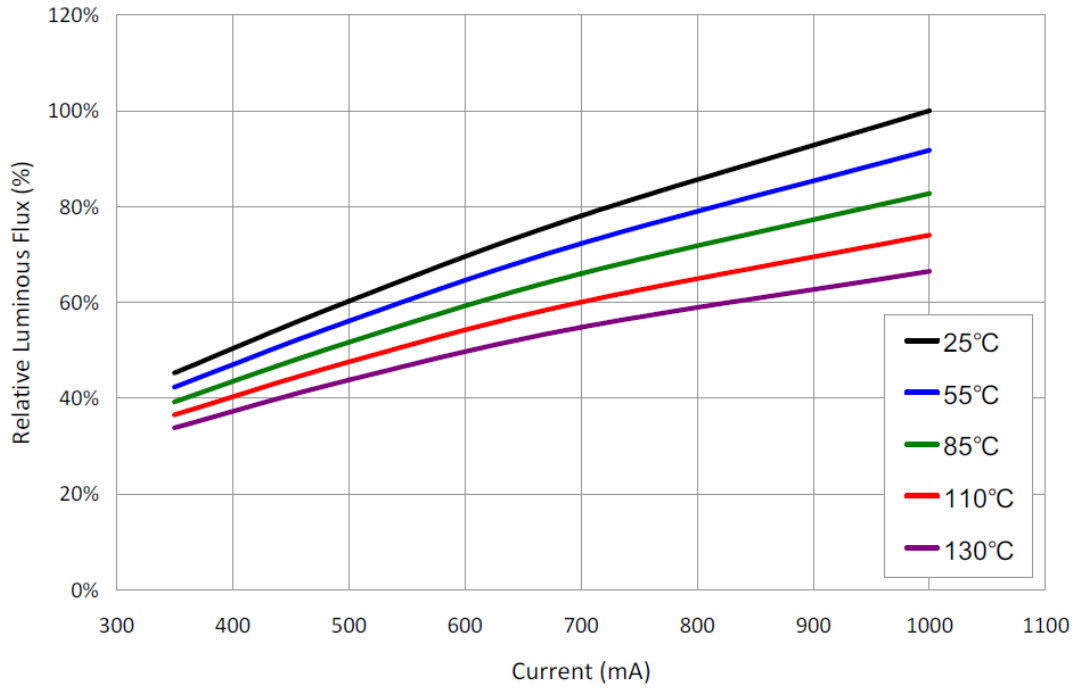


BIN Code	Typical CCT	Cx	Cy	BIN Code	Typical CCT	Cx	Cy
A01	5720K	0.3186	0.3484	A03	6230K	0.3096	0.3282
		0.3355	0.3633			0.3127	0.3093
		0.3349	0.3404			0.3255	0.3216
		0.3203	0.3274			0.3246	0.3424
A02	5970K	0.3138	0.3381				
		0.3163	0.3181				
		0.33	0.3308				
		0.3298	0.3526				

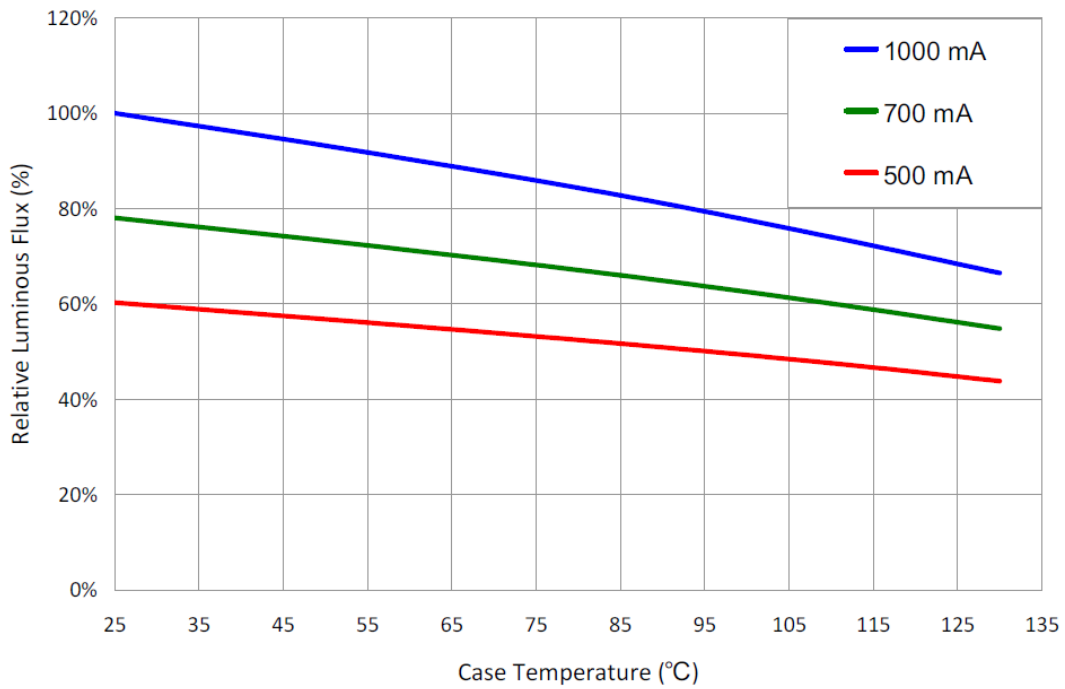
**Relative Spectral Power Distribution,  $T_c=25^\circ\text{C}$ , 1000mA Pulsed (15 msec)**



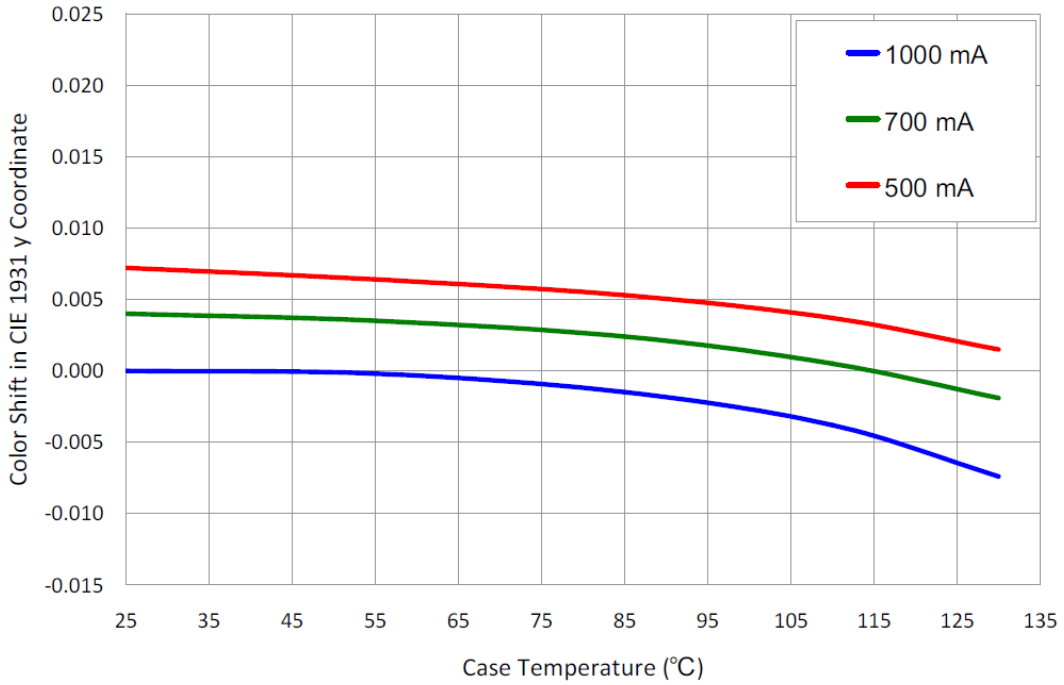
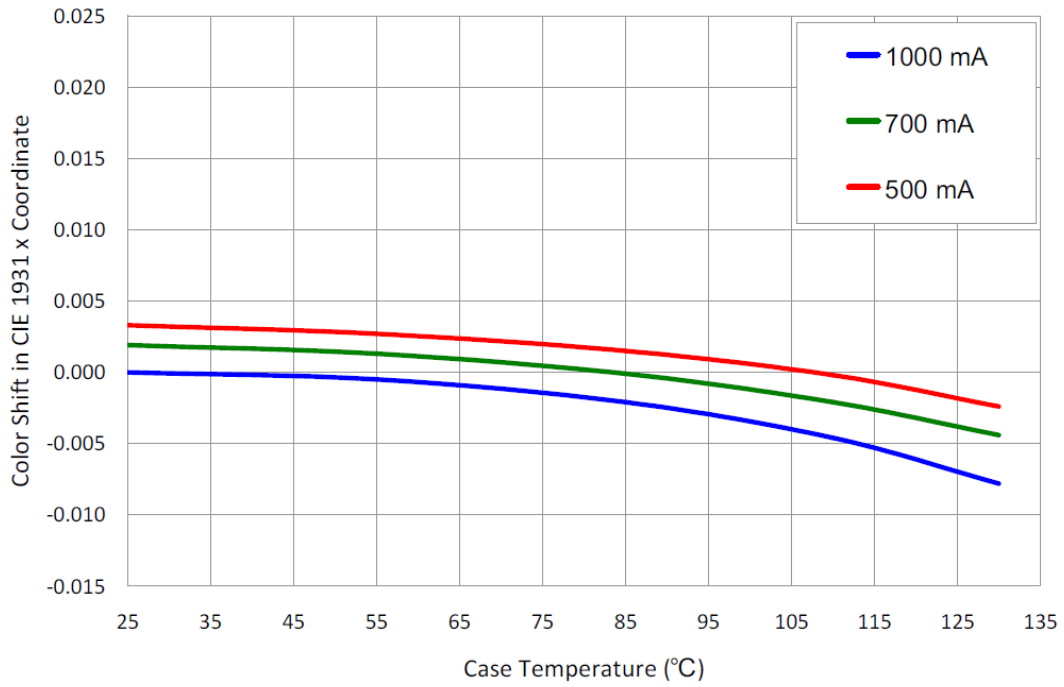
### Typical Relative Luminous Flux vs. Forward Current



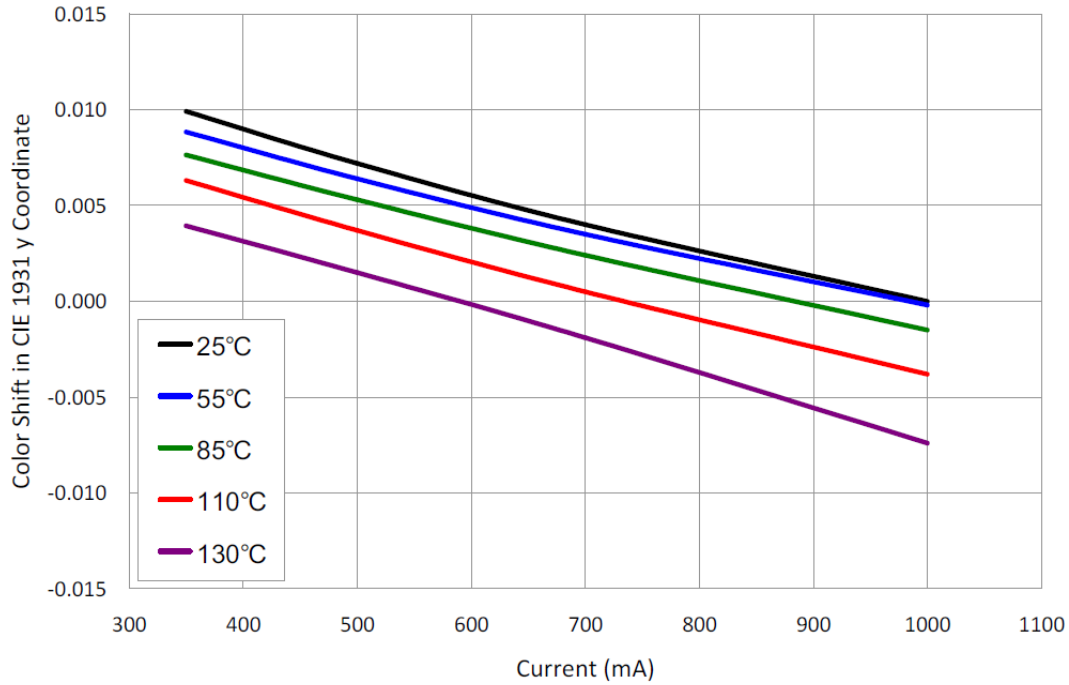
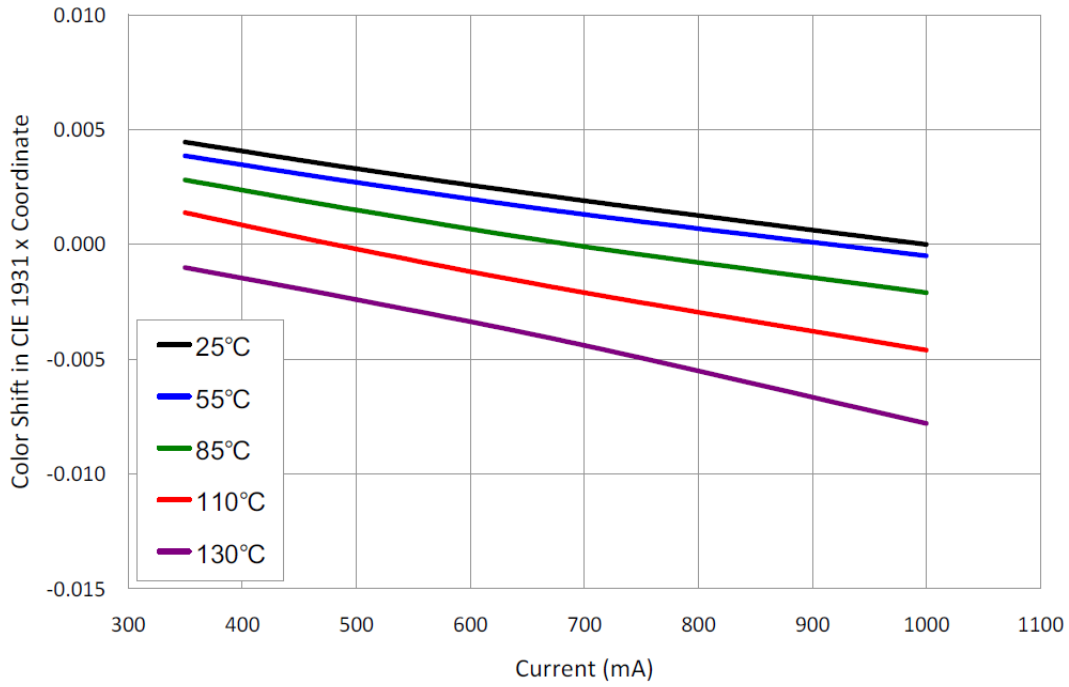
### Typical Relative Luminous Flux vs. Case Temperature



## Color Shift vs. Case Temperature



### Color Shift vs. DC Drive Current



## About Us

**TSLC Corporation** is devoted to developing high-density, and multi-size emitters with powerful output to satisfy the needs of every customer.

**TSLC Corporation** is the leader in LED solutions. Unlimited design flexibility for interior and exterior spaces with high-end lighting effect; energy-efficient for UV curing to improve the quality of medical care; horticulture solutions create a better environment for everyone; high-intensity rotatable lightings for the entertainment industry, TSLC is always there for your lighting needs.

For further company or product information, please visit us at [www.tslc.com.tw](http://www.tslc.com.tw) or please contact [sales@tslc.com.tw](mailto:sales@tslc.com.tw).



[www.tslc.com.tw](http://www.tslc.com.tw)

### ASIA PACIFIC

3F-1, No.8, Xin An Road,  
Hsinchu, Science Park  
Hsinchu City  
Taiwan 300-78

Tel: +886-3-5789555

Fax: +886-3-5788111

[sales@tslc.com.tw](mailto:sales@tslc.com.tw)

