

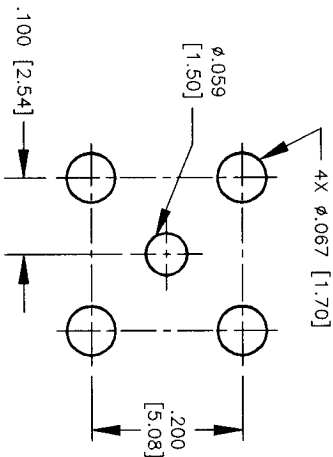
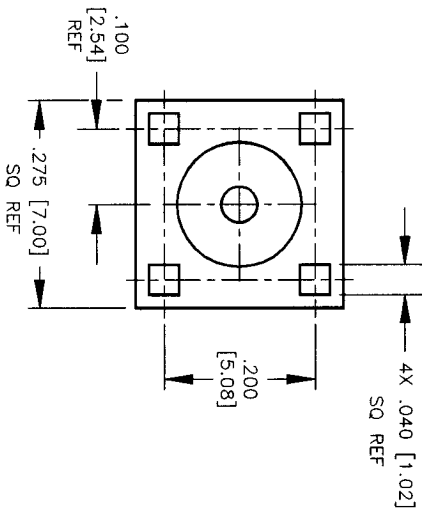
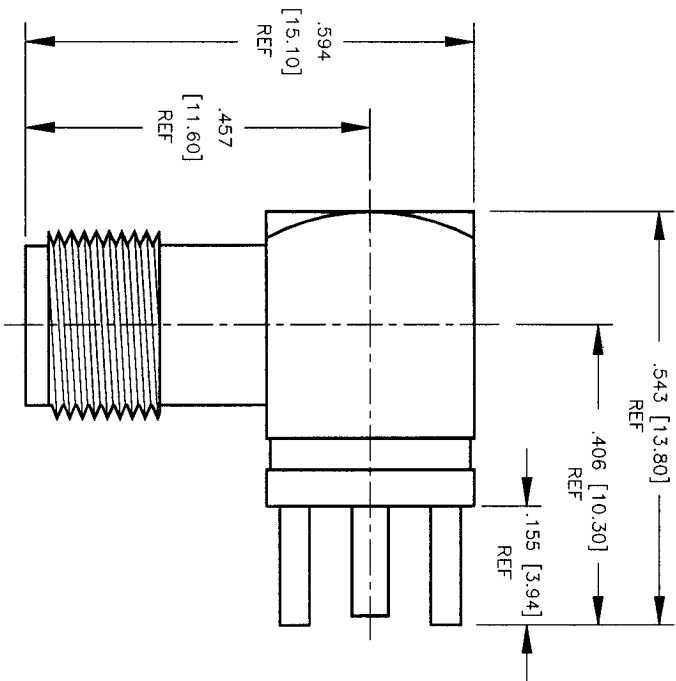
ENVELOPE / ASSEMBLY DRAWING

008974

SPECIFICATION CONTROL DRAWING

THIS DRAWING CONTAINS INFORMATION PROPRIETARY TO RF INDUSTRIES, LTD. ANY UNAUTHORIZED USE OF THIS DRAWING IS EXPRESSLY PROHIBITED. ANY VIOLATION IS PUNISHABLE UNDER U.S. COPYRIGHT LAWS.

REV	DESCRIPTION	DWN	DATE	APPROVED
A	ENGINEERING RELEASE	KMM	9/1/93	K.HARTMANN
B	CHANGE PART NUMBER FROM RSA-2313 TO RSA-3300	WMD	2/20/93	C. JONES
C	CORRECT BODY LENGTH DIM	KMM	9/7/96	R. RICE



SUGGESTED MOUNTING CONFIGURATION

SPECIFICATIONS:

IMPEDANCE: 50 OHMS

ITEM	DESCRIPTION	QTY	MATERIAL	FINISH
5	DIELECTRIC	1	TEFLON	NONE
4	DIELECTRIC	1	TEFLON	NONE
3	CONTACT	1	BeCu	GOLD
2	PRESS FIT BODY	1	BRASS	GOLD
1	BODY	1	BRASS	GOLD

DRAWN K. MAXWELL	9/7/96
CHECKED <i>K. Maxwell</i>	9/1/96
OR DRAWN K. MAXWELL	9/1/93
APPROVALS	DATE

RF
Connectors

DIVISION OF RF INDUSTRIES, LTD.

RSA-3300-1

SMA FEMALE R/A PCB MOUNT

7610 MIRAMAR RD
SAN DIEGO, CA 92126
(619)549-6340
(619)549-6345 FAX

SIZE A	CABLE GROUP N/A	DWG NO. 8201	REV C
SCALE: 4:1	CAD FILE 13ARC B	SHEET 1 OF 1	