

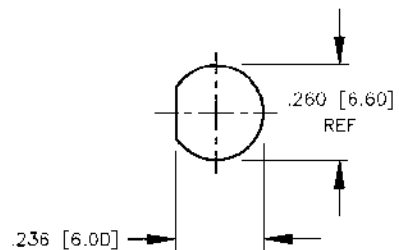
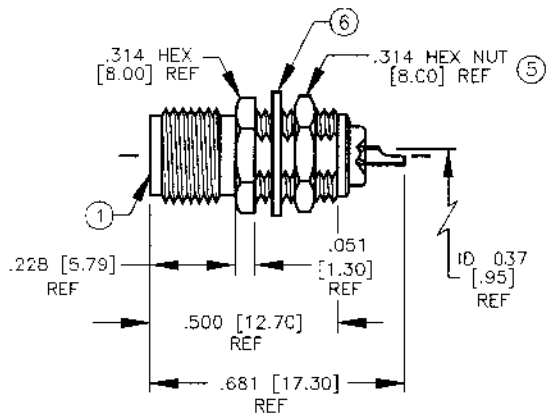
ENVELOPE / ASSEMBLY DRAWING

008974

SPECIFICATION CONTROL DRAWING

THIS DRAWING CONTAINS INFORMATION PROPRIETARY TO RF INDUSTRIES, LTD. ANY UNAUTHORIZED USE OF THIS DRAWING IS EXPRESSLY PROHIBITED. ANY VIOLATION IS PUNISHABLE UNDER U.S. COPYRIGHT LAWS.

REV	DESCRIPTION	DWN	DATE	APPROVED
A	ENGINEERING RELEASE	WMD	6/13/95	R. RICE
B	ADD ELEC SPECS	KMM	9/5/96	R. RICE



RECOMMENDED MOUNTING HOLE
.126 [3.20] MAX PANEL THICKNESS

SPECIFICATIONS:

IMPEDANCE: 50 OHMS
WORKING VOLTAGE: 335 VRMS @ SEA LEVEL
FREQUENCY RANGE: 0-12.4 GHz

DIMENSIONS ARE IN INCHES AND [MILLIMETERS]

UNLESS OTHERWISE NOTED TOLERANCES ARE:

DECIMALS DIAMETER

RF connectors

DIVISION OF RF INDUSTRIES, LTD.

7610 MIRAMAR RD
SAN DIEGO, CA 92126
(619)549-6340
(619)549-6345 FAX

RSA-3250

SMA FEMALE BULKHEAD, SOLDER, FRONT MOUNT

ITEM	DESCRIPTION	QTY	MATERIAL	FINISH
6	LOCK WASHER [LKW-250]	1	BRASS	NICKEL
5	HEX NUT [HEX-250-36S]	1	BRASS	NICKEL
4	DIELECTRIC	1	TEFLON	NONE
3	DIELECTRIC	1	TEFLON	NONE
2	PIN	1	BeCu	GOLD
1	BODY	1	BRASS	NICKEL

DRAWN	K. MAXWELL	9/5/96
CHECKED	<i>B. Bin</i>	9/10/96
ORIG DRAWN	K. MAXWELL	6/13/95
APPROVALS		DATE

SIZE	CABLE GROUP	DWG NO.	REV
A	N/A	8519	B
SCALE:	2:1	CAD FILE	13ARC B
			SHEET 1 OF 1