

## DFE 146-S2

### Description

DF is a range of compact double inlet radial fans. They have high capacity and low sound levels. They are ideal for use in heat exchangers, dehumidifiers and air cleaners.

The forward curved impellers are driven directly by a ball bearing mounted external rotor induction motor. The motor is placed in the air stream for maximum cooling. This makes voltage regulation possible from 0-100%. The motor is maintenance free and has a built in thermal protector as standard.

The DF fans are manufactured using galvanized sheet metal.



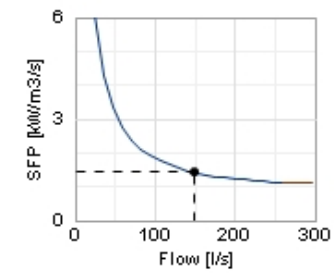
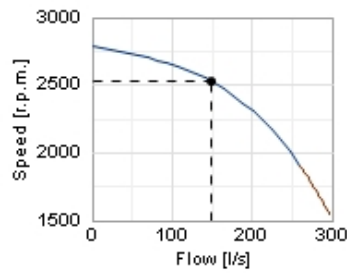
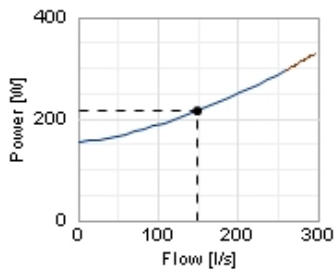
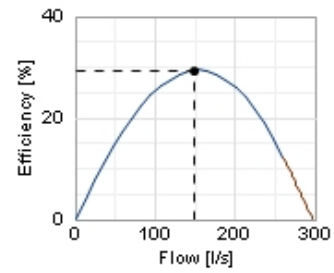
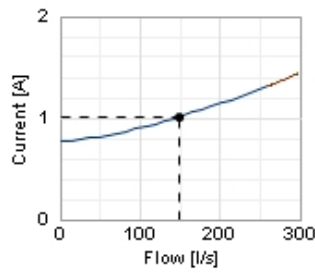
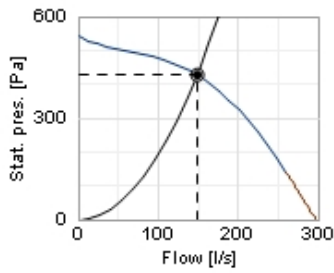
### Technical data

Parameter	value	Unit
Voltage	230	V
Phase	1	~
Frequency	50	Hz
Power	290	W
Current	1,3	A
R.p.m.	1950	r.p.m.
Max. temperature of transported air	45	°C
Max. temperature of transported air when speed-controlled	45	°C
Sound pressure level at 3 m	65	dB(A)
Length	226	mm
Width	232	mm
Height	238	mm
Enclosure class, motor	44	IP
Insulation class, motor	F	
Capacitor	10	µF
Weight	3,5	kg

## Diagrams

○ Selected point

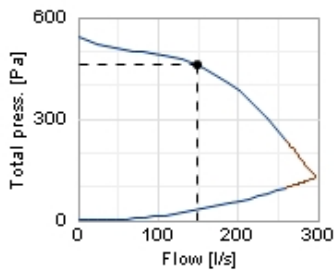
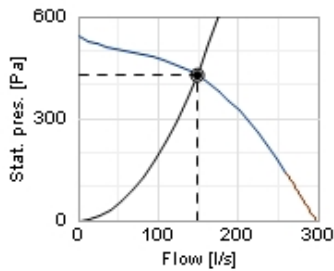
Flow [l/s]	149
Stat. pres. [Pa]	428
● Work point	
Flow [l/s]	149
Stat. pres. [Pa]	428
Power [W]	216
Current [A]	1,02
Speed [r.p.m.]	2532
Efficiency [%]	29,4
SFP [kW/m <sup>3</sup> /s]	1,43
Voltage [V]	230



## Sound

○ Selected point

Flow [l/s]	149
Stat. pres. [Pa]	428
● Work point	
Flow [l/s]	149
Stat. pres. [Pa]	428
Total press. [Pa]	460
Power [W]	216
Current [A]	1,02
Speed [r.p.m.]	2532
Efficiency [%]	29,4
SFP [kW/m <sup>3</sup> /s]	1,43
Voltage [V]	230

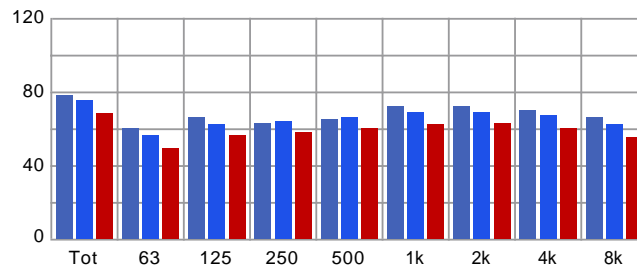


Distance: 3

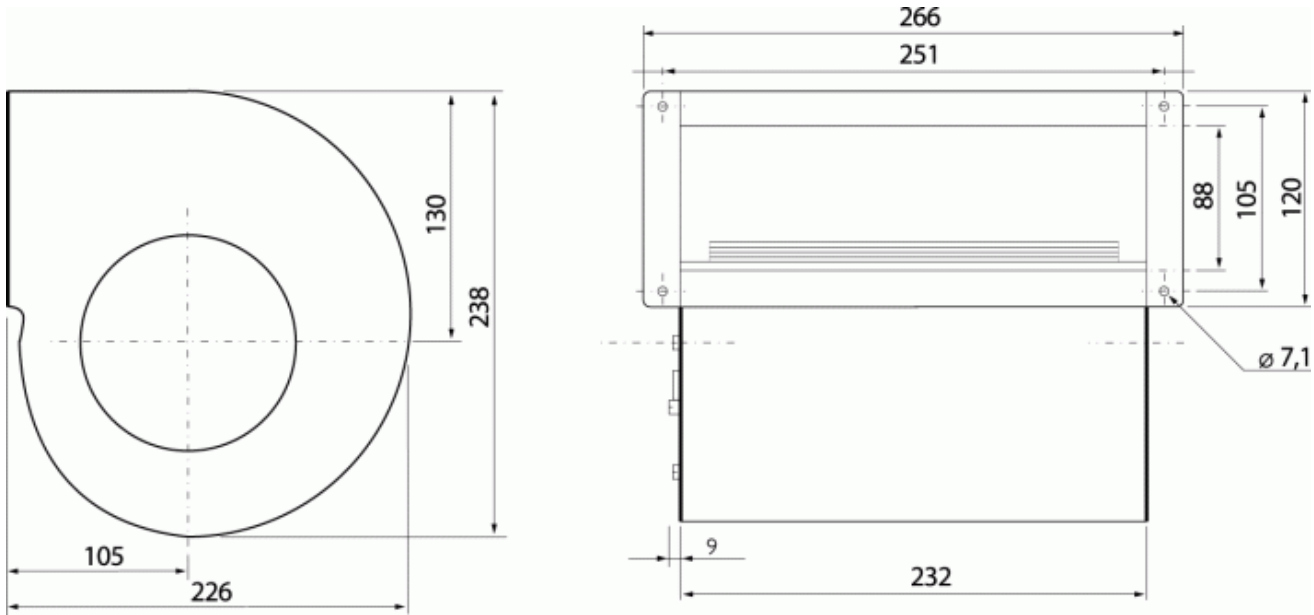
Propagation type: Semi-spherical

Equivalent absorption area: 20

	Tot	63	125	250	500	1k	2k	4k	8k
Outlet Lw dB(A)	78	60	66	63	65	72	72	70	66
Surrounding Lw dB(A)	75	56	62	64	66	69	69	67	62
Surrounding Lp dB(A)	68	49	56	58	60	62	63	60	55

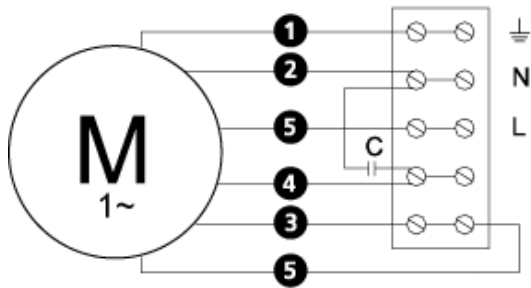


Dimensions



Wiring diagram

4040005



**Accessories**

**Electric accessories**



VRDE 3



VRS 2,0



VRTE 3