

Voltage Controlled Oscillator

ROS-1455+

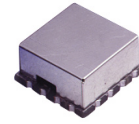
Wide Band 900 to 1455 MHz

Features

- High Power, +13 dBm typ.
- Linear Tuning characteristics
- Low Pushing
- Low Phase Noise
- Aqueous washable

Applications

- Frequency synthesizers
- Wireless communication
- CDMA
- TDMA
- GSM



CASE STYLE: CK605
PRICE: \$ 24.95 ea. QTY (5-49)

+ RoHS compliant in accordance with EU Directive (2002/95/EC)

The +Suffix has been added in order to identify RoHS Compliance. See our web site for RoHS Compliance methodologies and qualifications.

Electrical Specifications

MODEL NO.	FREQ. (MHz)		POWER OUTPUT (dBm)	PHASE NOISE dBc/Hz SSB at offset frequencies, kHz				TUNING					NON HARMONIC SPURIOUS (dBc)	HARMONICS (dBc)		PULLING pk-pk @ 12 dB (MHz)	PUSHING (MHz/V)	DC OPERATING POWER	
	Min.	Max.		Typ.	1	10	100	1000	VOLTAGE RANGE (V)	SENSI-TIVITY (MHz/V)	PORT CAP (pF)	3 dB MODULATION BANDWIDTH (MHz)		Typ.	Typ.			Max.	Typ.
ROS-1455+	900	1455	+13	-72	-100	-126	-146	0.5	12	60 - 71	30	75	-90	-15	-	18	0.5	12	40

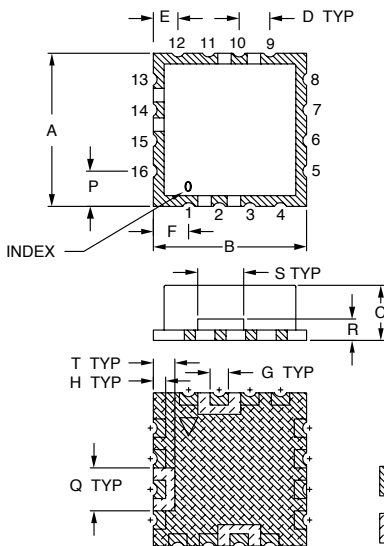
Pin Connections

RF OUT	10
VCC	14
V-TUNE	2
GROUND	1,3,4,5,6,7,8,9,11,12,13,15,16

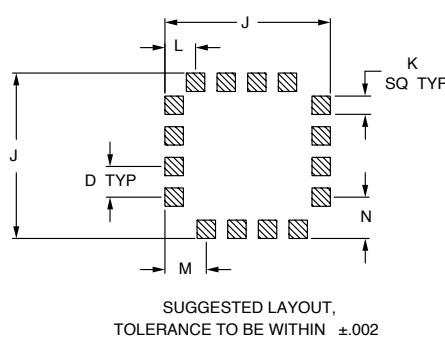
Maximum Ratings

Operating Temperature	-55°C to 85°C
Storage Temperature	-55°C to 100°C
Absolute Max. Supply Voltage (Vcc)	14V
Absolute Max. Tuning Voltage (Vtune)	14V
All specifications	50 ohm system

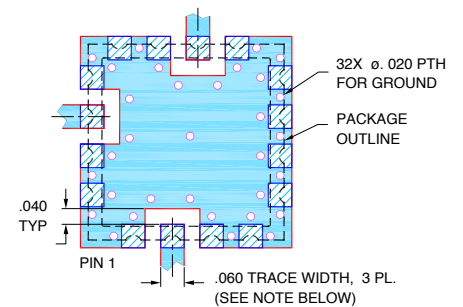
Outline Drawing



PCB Land Pattern



Demo Board MCL P/N: TB-10 Suggested PCB Layout (PL-012)



- NOTES:**
1. TRACE WIDTH IS SHOWN FOR RF4 WITH DIELECTRIC THICKNESS .030" ± .002"; COPPER: 1/2 OZ. EACH SIDE. FOR OTHER MATERIALS TRACE WIDTH MAY NEED TO BE MODIFIED.
 2. BOTTOM SIDE OF THE PCB IS CONTINUOUS GROUND PLANE.
- DENOTES PCB COPPER LAYOUT WITH SMOBC (SOLDER MASK OVER BARE COPPER)
 - DENOTES COPPER LAND PATTERN FREE OF SOLDER MASK

Outline Dimensions (inch/mm)

A	B	C	D	E	F	G	H	J	K	L	M	N	P	Q	R	S	T	wt.
.500	.500	.180	.100	.080	.115	.060	.040	.540	.060	.100	.135	.135	.115	.140	.070	.150	.070	grams
12.70	12.70	4.57	2.54	2.03	2.92	1.52	1.02	13.72	1.52	2.54	3.43	3.43	2.92	3.56	1.78	3.81	1.78	1.0

Performance Data & Curves*

ROS-1455+

V TUNE	TUNE SENS (MHz/V)	FREQUENCY (MHz)			POWER OUTPUT (dBm)			Icc (mA)	HARMONICS (dBc)			FREQ. PUSH (MHz/V)	FREQ. PULL (MHz)	PHASE NOISE (dBc/Hz) at offsets				FREQ OFFSET (KHz)	PHASE NOISE at 1188 MHz (dBc/Hz)
		-55°C	+25°C	+85°C	-55°C	+25°C	+85°C		F2	F3	F4			1KHz	10KHz	100KHz	1MHz		
0.00	69.21	756.3	749.1	731.1	14.16	14.24	13.98	33.44	-23.7	-18.9	-35.5	0.28	22.13	-68.9	-95.6	-117.3	-137.2	1.0	-71.45
0.50	69.59	791.1	783.7	766.6	14.04	14.11	13.78	33.45	-22.4	-19.1	-37.8	0.36	19.07	-68.9	-95.6	-117.3	-137.2	2.0	-81.45
1.00	69.11	825.6	818.5	802.3	13.97	14.02	13.65	33.48	-21.3	-19.3	-41.6	0.34	13.03	-68.9	-95.7	-117.4	-137.3	3.5	-88.21
1.50	70.11	860.3	853.1	836.9	14.04	14.09	13.60	33.52	-20.5	-19.5	-43.6	0.34	24.33	-68.9	-96.6	-118.1	-138.0	6.0	-94.55
2.00	71.66	895.3	888.1	872.4	14.04	14.07	13.58	33.59	-19.4	-19.5	-42.9	0.31	11.78	-70.8	-98.0	-120.5	-140.2	8.5	-99.68
2.50	70.36	931.5	923.9	907.5	14.03	14.01	13.50	33.65	-18.2	-19.8	-40.3	0.33	18.83	-73.2	-102.3	-123.6	-143.9	10.0	-101.16
3.00	71.15	966.4	959.1	943.5	14.11	14.07	13.48	33.74	-17.4	-20.4	-37.4	0.30	4.32	-72.0	-99.9	-123.5	-143.1	20.8	-109.72
4.00	69.91	1036.8	1029.7	1014.3	14.23	14.15	13.43	33.92	-16.2	-22.6	-31.6	0.34	4.93	-73.4	-100.7	-123.6	-143.6	35.5	-116.51
5.00	68.12	1106.7	1099.3	1083.5	14.16	14.05	13.29	34.13	-15.2	-27.0	-29.7	0.25	9.27	-73.5	-101.6	-126.6	-146.6	60.7	-121.84
6.00	66.31	1174.4	1167.0	1151.3	14.03	13.89	13.14	34.34	-14.4	-31.2	-26.7	0.19	14.48	-71.1	-101.9	-126.6	-147.0	86.7	-125.53
7.00	64.43	1240.2	1232.9	1217.4	13.97	13.80	12.99	34.55	-14.0	-27.5	-25.3	0.13	18.07	-72.5	-101.5	-126.9	-147.4	100.0	-126.26
8.00	61.52	1304.2	1297.0	1281.8	13.84	13.68	12.92	34.76	-13.7	-23.8	-24.6	0.23	18.76	-71.6	-99.7	-126.0	-145.7	148.1	-130.26
8.50	63.71	1335.2	1327.8	1312.8	13.70	13.58	12.84	34.83	-13.9	-23.7	-26.4	0.22	11.55	-69.8	-100.4	-126.9	-147.0	177.0	-131.86
9.00	61.26	1367.0	1359.6	1344.4	13.51	13.35	12.63	34.93	-14.0	-22.4	-25.1	0.20	11.41	-68.5	-98.2	-124.7	-145.0	211.6	-133.67
9.50	61.20	1397.6	1390.2	1375.5	13.42	13.24	12.45	35.03	-13.9	-22.2	-25.1	0.18	17.75	-70.7	-99.2	-126.2	-146.4	302.4	-136.32
10.00	60.19	1428.4	1420.8	1405.9	13.25	13.07	12.32	35.09	-13.7	-21.0	-23.7	0.15	12.00	-68.9	-96.8	-125.2	-145.1	361.5	-138.27
10.50	60.35	1458.6	1450.9	1436.2	13.16	13.04	12.21	35.16	-13.9	-21.2	-24.3	0.12	16.64	-68.6	-97.6	-125.0	-145.5	507.5	-140.91
11.00	57.70	1488.7	1481.1	1466.3	13.01	12.84	12.11	35.24	-14.1	-19.9	-22.7	0.09	15.77	-67.6	-98.2	-125.3	-145.4	606.7	-142.60
11.50	57.93	1517.4	1510.0	1495.8	12.93	12.79	12.04	35.31	-13.8	-19.7	-22.7	0.02	9.21	-66.3	-97.8	-124.1	-141.9	851.6	-145.61
12.00	57.67	1546.8	1538.9	1524.3	12.65	12.58	11.94	35.30	-14.3	-19.0	-21.7	0.07	17.81	-67.5	-97.1	-124.4	-144.9	1000.0	-146.63

*at 25°C unless mentioned otherwise

