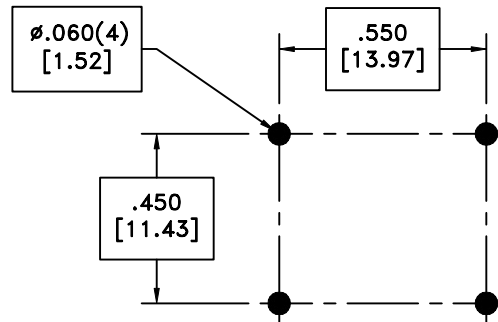
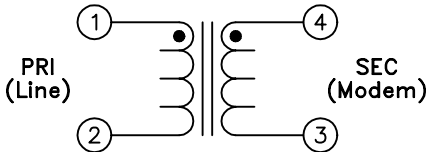
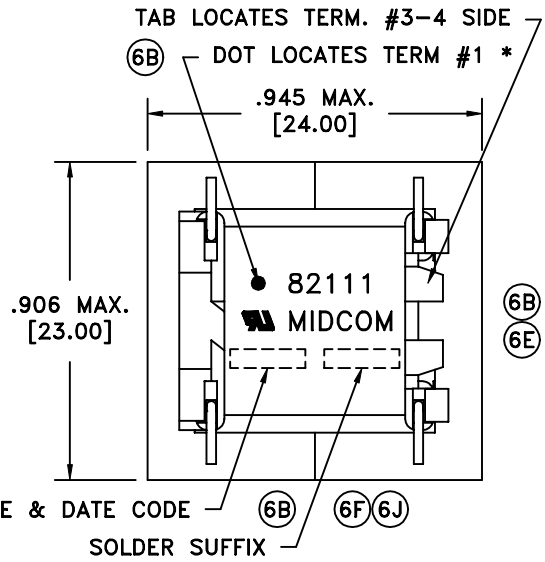
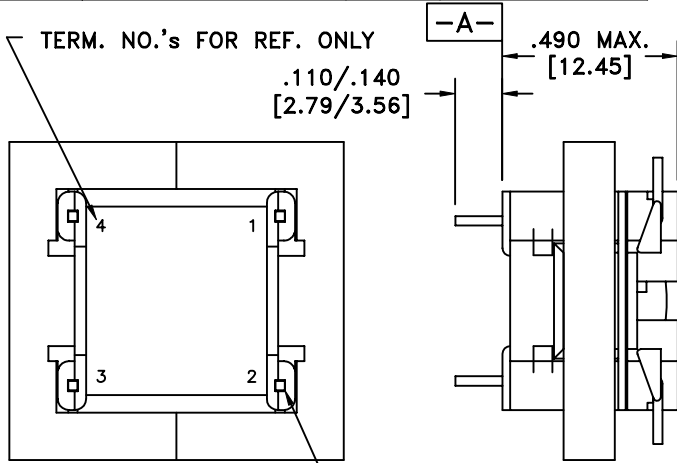


SOLDER SUFFIX	CUSTOMER TERMINAL	RoHS	LEAD(Pb)-FREE (6J)
	Sn63%, Pb37%	No	No
LF3	Sn100%	Yes	Yes



RECOMMENDED P.C. PATTERN, COMPONENT SIDE

ELECTRICAL SPECIFICATIONS @ 25°C unless otherwise noted:

- IMPEDANCE:** Designed to reflect 600 ohm on PRI with 470 ohm load on SEC.
- LONGITUDINAL BALANCE:** 66dB min., 60 - 1000Hz; 46dB min., 1-2, 1000 - 4000Hz; per FCC Part 68.310, with terminal 3 or 4 grounded.
- D.C. RESISTANCE (@20°C):** PRI, 100 ohms ±10%; SEC, 112 ohms ±10%.
- FREQUENCY RESPONSE:** ±1.0dB, 600Hz - 3500Hz; ±4.0dB, 300Hz - 600Hz.
- INSERTION LOSS:** 2.5dB max., 1000Hz, per IEEE method, 20°C, 0 - 30mADC.
- DIELECTRIC RATING:** 1500VAC, 1 minute tested by applying 1875VAC for 1 second between PRI - SEC.
- (6C) TURNS RATIO:** (4-3):(1-2) = 1:1, ±2%.
- OPERATING CONDITIONS:** All specs. except as noted to be from -20 to +4dBm, 0 to 100mADC in PRI, 600 ohm source resistance on PRI, 470 ohm load on SEC.

(6B) * Marking detail may be rotated 90° clockwise. Locating dot will not move.

(6C)(6E) Designed to comply with the following requirements as defined by IEC60950-1, EN60950-1, UL60950-1/CSA60950-1 and AS/NZS60950.1:

(6J) - Supplementary insulation for a primary circuit at a working voltage of 250Vrms.

AGENCY NUMBER (6B)(6J)	
BABT (6E)	NC/012412
UL 60950-1 (6E)(6C)	E205930
CSA 60950-1 (Via CUL) (6E)(6C)	E205930
IEC 60950-1 (Via CB cert.) (6E)	US/9300/UL
JAPAN (Via CB cert.) (6E)	US/9300/UL
ACA/AUSTEL (Via CB cert.) (6E)	US/9300/UL

DETAILS SUBJECT TO CHANGE

Midcom, Inc.
Watertown, SD USA
Toll Free: 800-643-2661
Fax: 605-886-4486

Unless otherwise specified:
Tolerances: Fractions: ±1/64
Angles: ±1° Decimals: ±.005 [0.13]

DRAWING TITLE
TRANSFORMER

REVISIONS: SEE SHEET 1

Midcom

DRAWING NO.
82111/-LF3

SCALE ---

(6J) REV.
6J
7/05

SHEET 2 OF 6

This drawing is dual dimensioned.
Dimensions in brackets are in millimeters.

DWG # 82111/-LF3