

Turning Angle of Adjustable Shaft

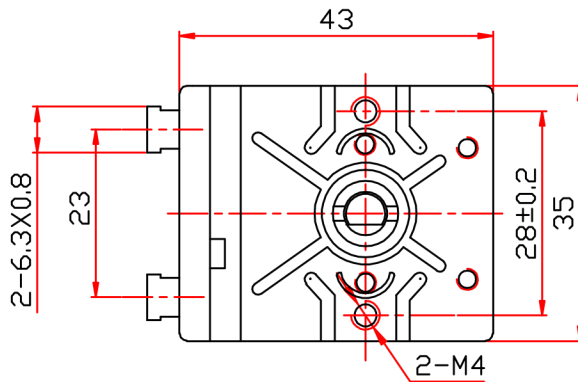
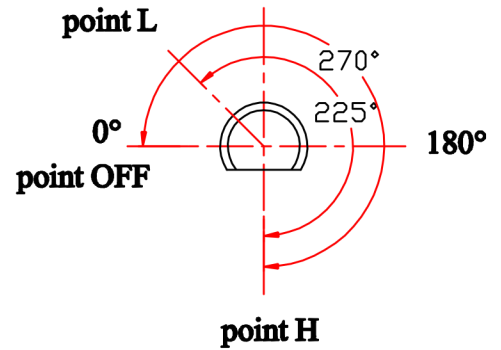
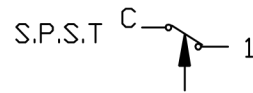


Diagram of contacts



Technical Data

- point H/OFF: 320°C ± 11°C DIFF: 6°C ± 3°C
- point L/OFF: 50°C ± 17°C
- Rated voltage: 250V
- Rated current: C-1 16A
- Resistance on contacts: < 50mΩ
- Insulation resistance: > 100MΩ/500V
- Hi-pot test: AC 2000V 1min 0.5mA
- Test condition : rate of temperature change(liquid) < 1° C/min
- Max.ambient temperature: 125 °C
- Max.temperature of the sensor: H/off+30 °C
- Torque of adjustable shaft: 0.02~0.05N · m
- Life(cycles) : 100000

Note:

- 1、 The operation temperature is measured at the ambient temperature 25 °C. So the operation temperature should be amended if the ambient temperature is not 25 °C.
- 2、 Capillary is easily to be damaged, so it should not be struck, pressed and broken. The contact of thermostat and capillary could not be twisted.
- 3、 This drawing shows the position of adjustable shaft at point H.
- 4、 The residual technical data consult with GB14536.10-1996.

					Thermostat drawing			WY320-653-21F6		
								Drawing no.		Quantity
Nos.		Remarks		Amendment nos.		Signed		Date		
Designed by				Standardization						
Checked by				Approved by						
Inspected by										
Drawn by				Date						
								1:1		
								Page		