



PRODUCT DATASHEET series

last update 6/2/2017

DETAILS

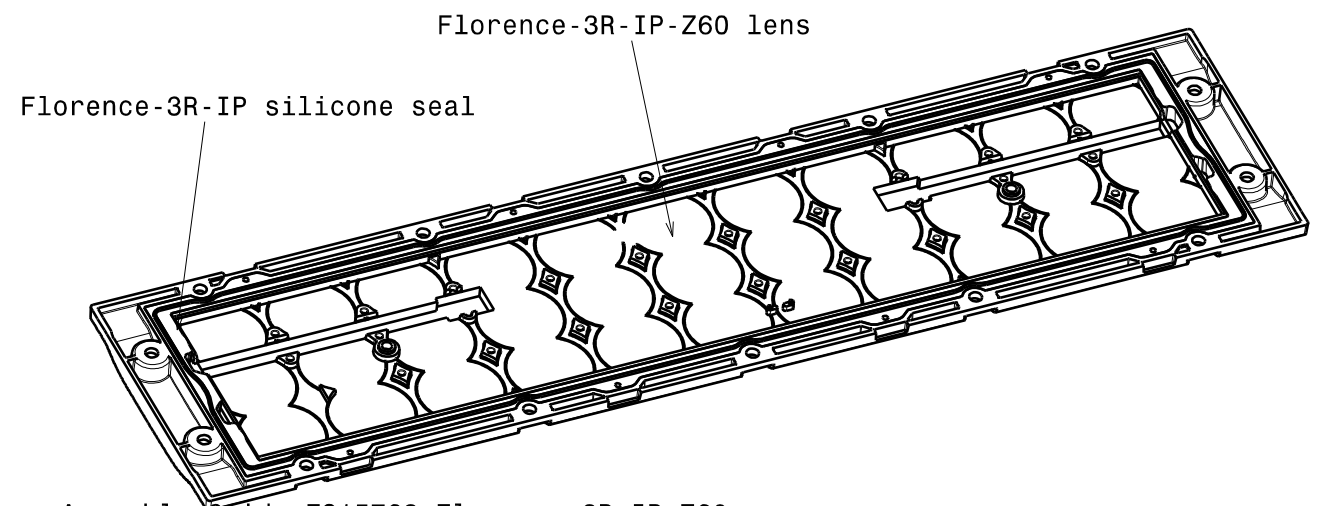
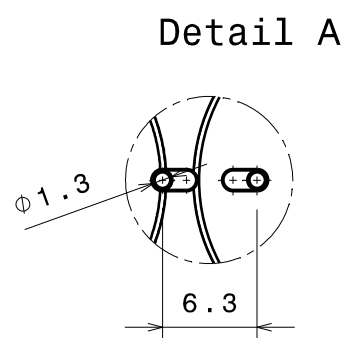
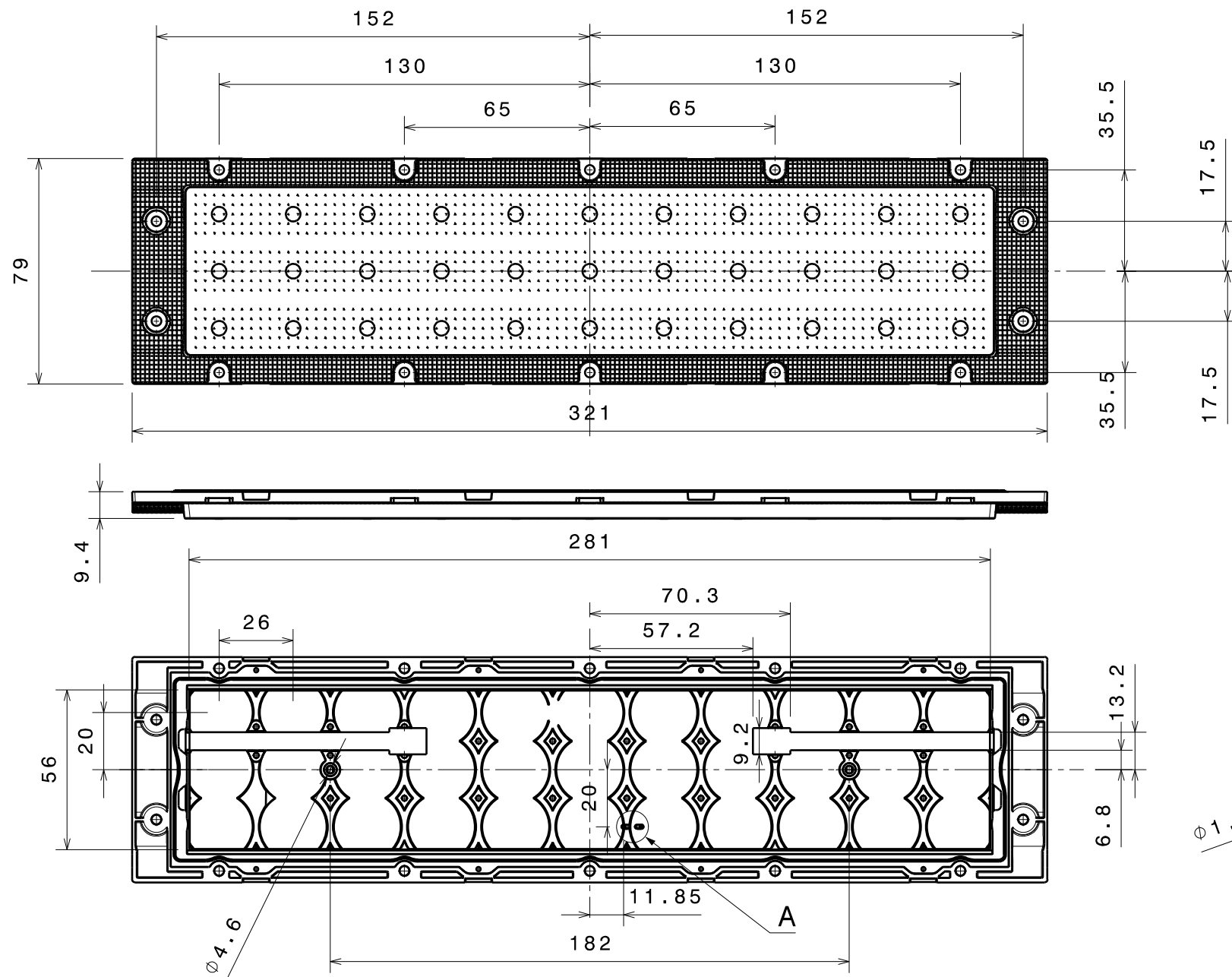
Product Number	FS15786_FLORENCE-3R-IP-Z60
Family	
Type	Assembly
Color	clear
Diameter	321 + 79 mm
Height	10,5 mm
Style	rectang
Optic Material	PC
Holder Material	
Fastening	
Status	sample approved
ROHS Compliant	Yes
Date Updated	6/02/2017



OPTICAL PROPERTIES

LED	Viewing Angle	Light Beam	Effi- ciency	cd/lm	Connector
LG 6030	60 deg		86 %	0.720	-

H G F E D C B A



- Assembly Guide FS15768 Florence-3R-IP-Z60:
1. Insert silicone seal into bottom of Florence-3R-IP-Z60 lens
 2. Set lens and silicone seal on top of PCB
 3. Fasten lens to heatsink with 14pcs of M3 screws

Screw type DIN 7985 M3, Max torque 0.6Nm

INDEX	PART NO	DESCRIPTION	MATERIAL	COLOUR
1	F15625	FLORENCE-3R-IP-Seal	Silicone	
2	F15674	FLORENCE-3R-IP-Z60	PC	

Tolerances if not otherwise shown
According to DIN ISO 2768-1
Linear measures:
Up to 30mm class M, otherwise class C.
According to DIN ISO 2768-2
Form and position: class L

LEDiL Ledil Oy
Salorankatu 10
FIN 24240 SALO
Finland

THIRD ANGLE PROJECTION:

DRAWING TITLE
FS15786_Florence-3R-IP-Z60-Mechanical-drawing

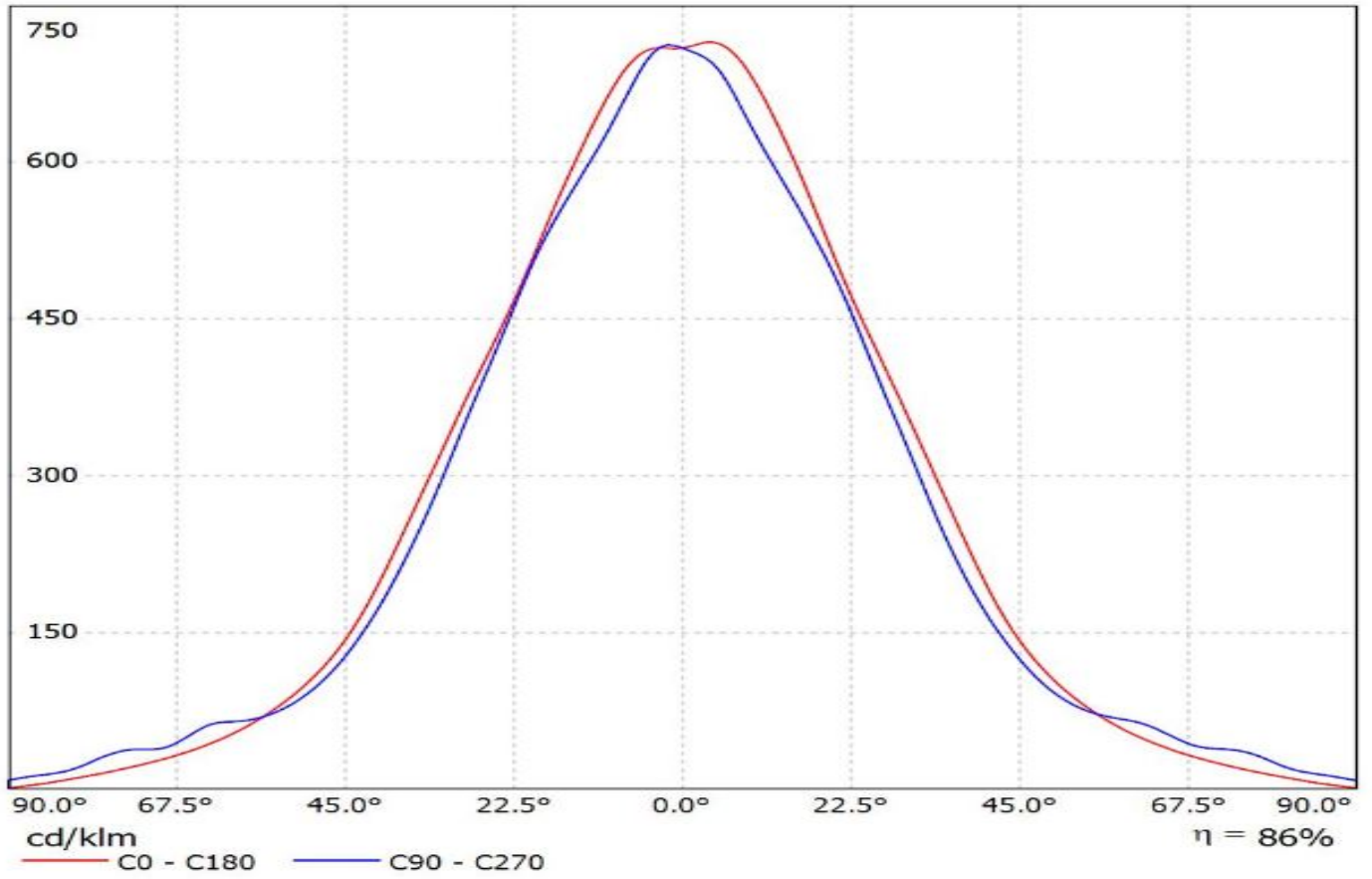
This drawing is the property of LEDiL Oy. It may not be reproduced, copied or communicated without a written agreement with LEDiL Oy.

SIZE	PART NUMBER
A3	FS15786

SCALE	1:2	WEIGHT	g	SHEET	1/1
-------	-----	--------	---	-------	-----

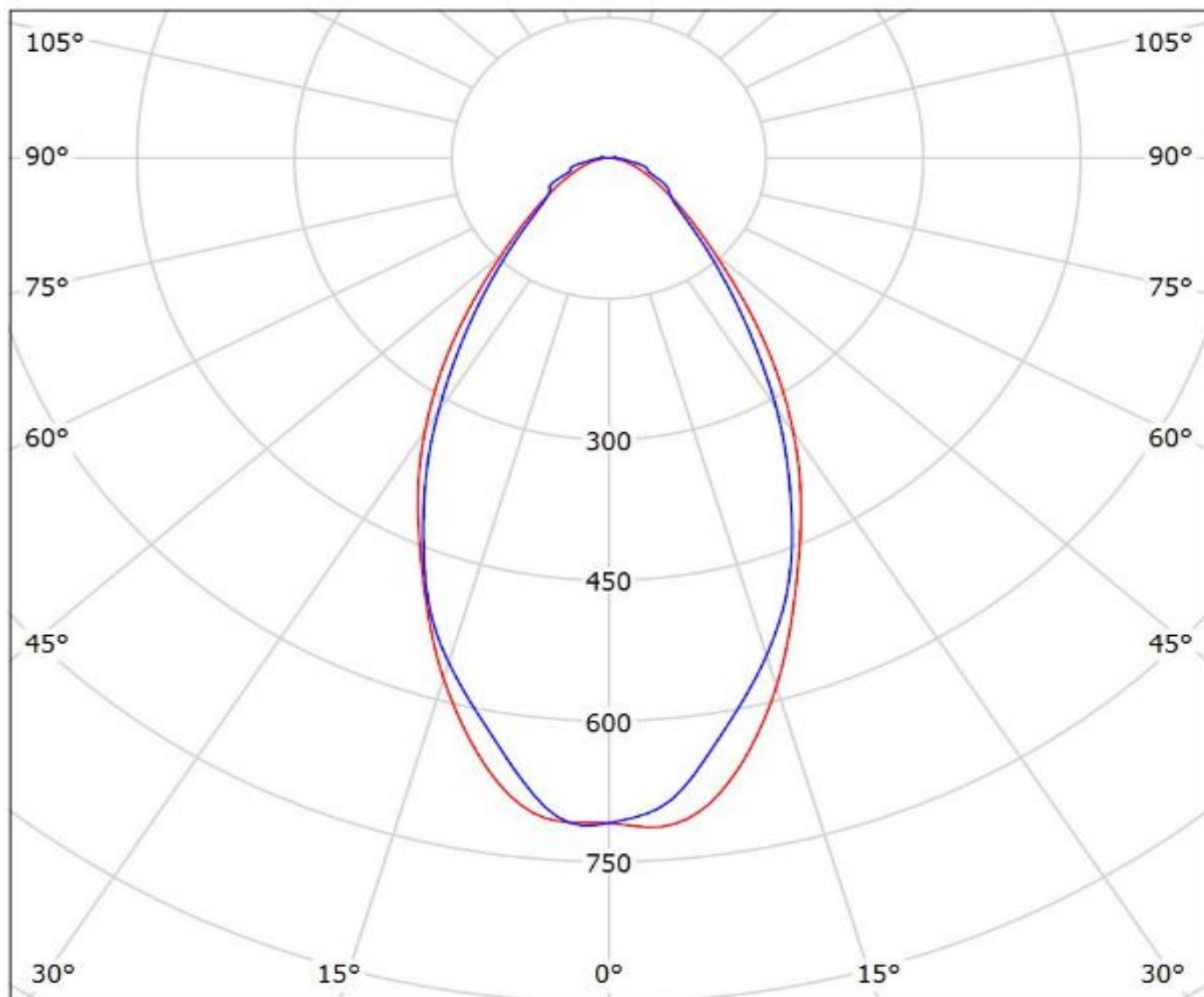
H G F E D C B A

Luminaire: Ledil FS15786_FLORENCE-3R-IP-Z60_(LG-6030)_Cav1
Lamps: 1 x LG-6030_(LEWMS68T80HZ)_1073.53lm@250mA_cct=5000K_P=7.9555W_I=0.25A



Luminaire: Ledil FS15786_FLORENCE-3R-IP-Z60_(LG-6030)_Cav1

Lamps: 1 x LG-6030_(LEWMS68T80HZ)_1073.53lm@250mA_cct=5000K_P=7.9555W_I=0.25A



cd/klm

— C0 - C180 — C90 - C270

$\eta = 86\%$

NOTE: The typical divergence will be changed by different color, chip size and chip position tolerance. The typical total divergence is the full angle measured where the luminous intensity is half of the peak value.