

STRADA-IP-2X6-PX

Double asymmetric beam designed to highlight pedestrian crossings for right side traffic

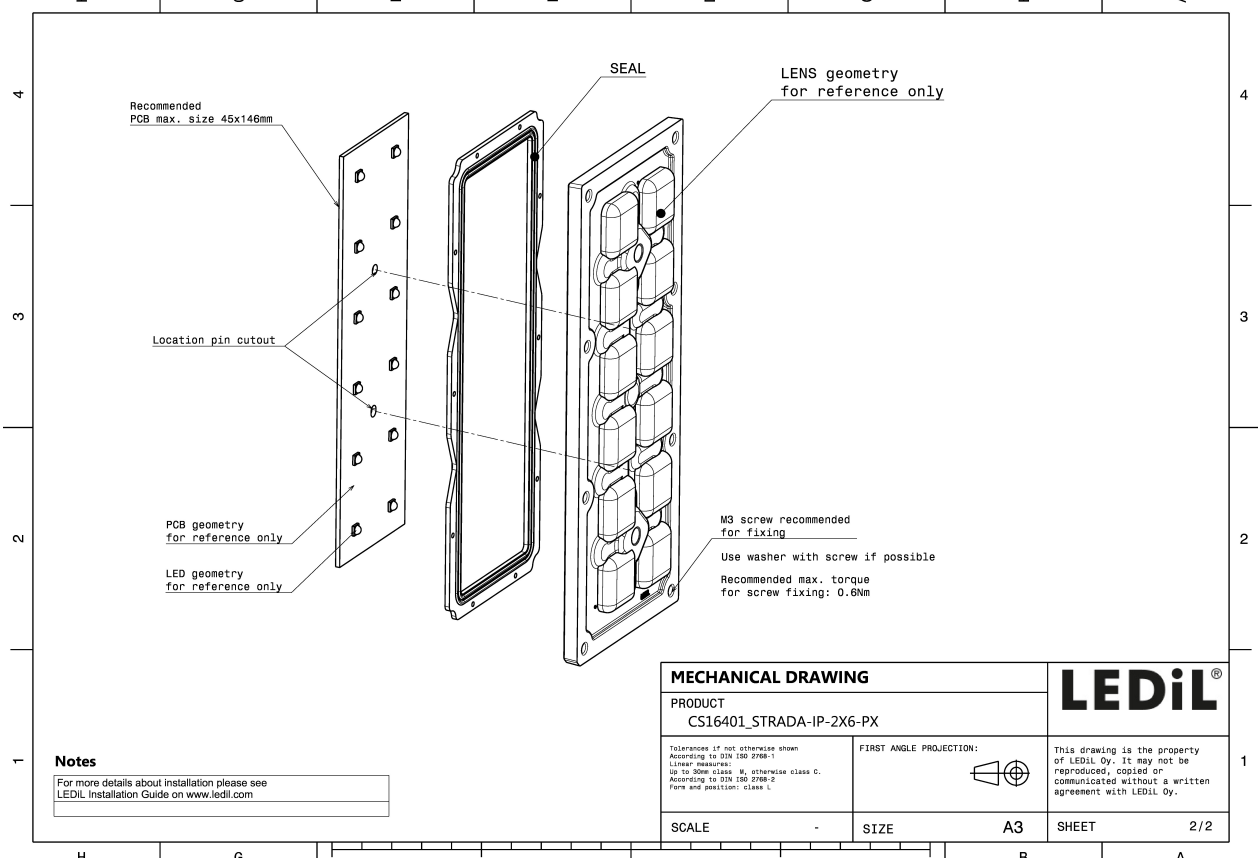
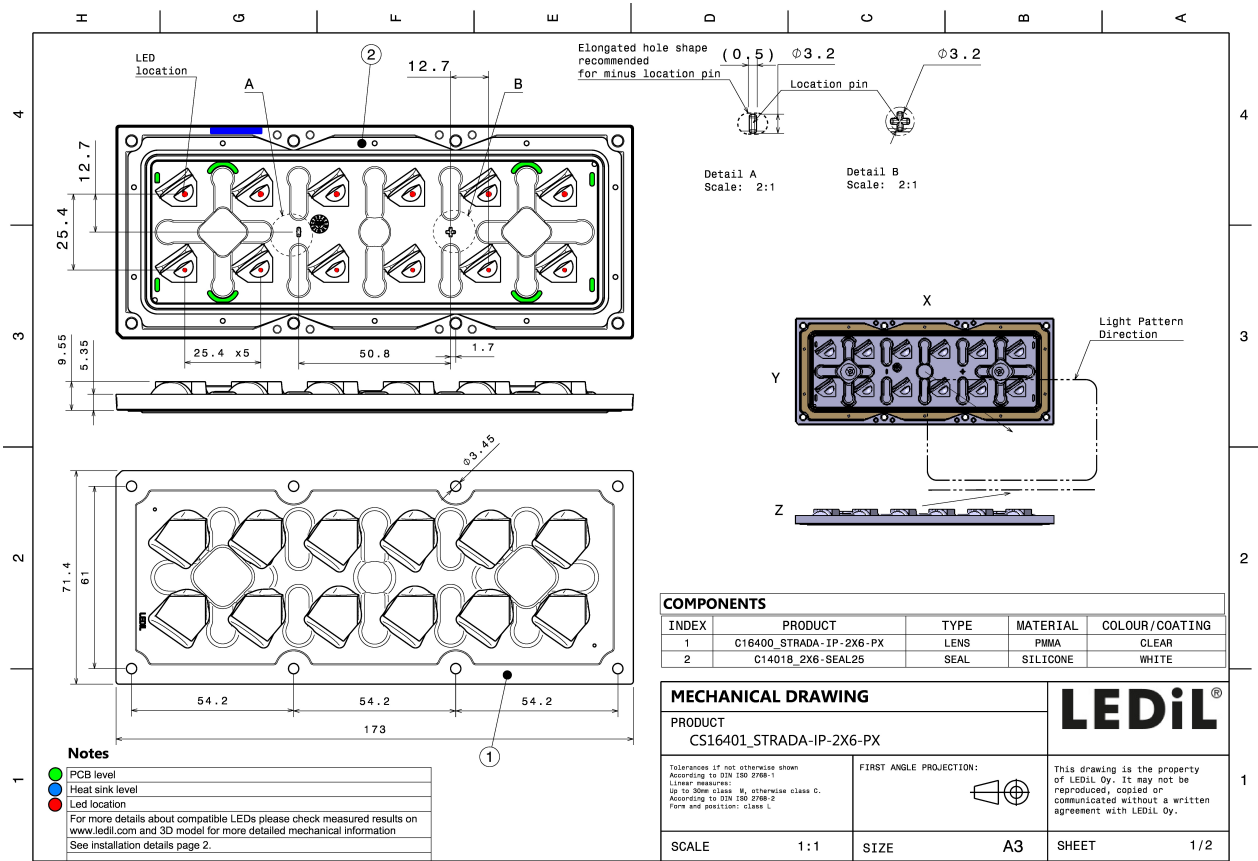
TECHNICAL SPECIFICATIONS:

Dimensions	173.0 x 71.4 mm
Height	9.6 mm
Fastening	pin, screw
Colour	clear
Box size	476 x 273 x 247 mm
Box weight	7.7 kg
Quantity in Box	120 pcs
ROHS compliant	yes ⓘ



MATERIAL SPECIFICATIONS:

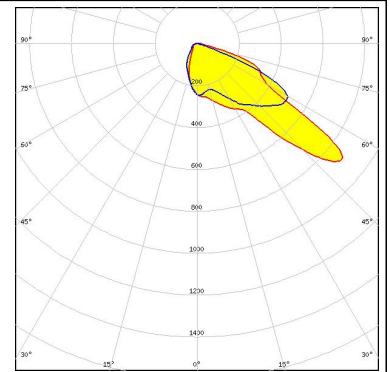
Component	Type	Material	Colour
STRADA-IP-2X6-PX	Lens array	PMMA	clear
2X6-SEAL25	Seal	Silicone	white



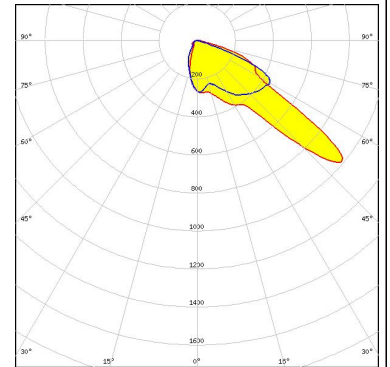
PHOTOMETRIC DATA (MEASURED):



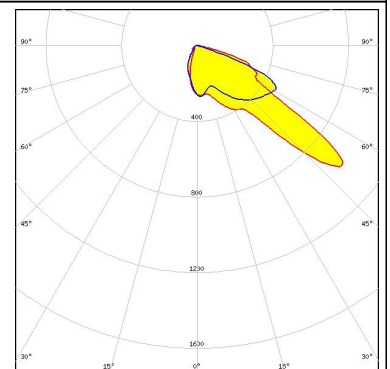
LED QUICK FLUX 2x6 LED XG xxx G7+
FWHM Asymmetric
Efficiency 94 %
Peak intensity 1.000 cd/lm
Required components:



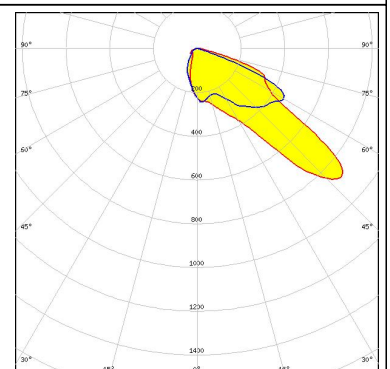
LED QUICK FLUX 2x6 LED XT xxx G5
FWHM Asymmetric
Efficiency 94 %
Peak intensity 1.100 cd/lm
Required components:



LED XP-G2
FWHM Asymmetric
Efficiency 94 %
Peak intensity 1.150 cd/lm
Required components:



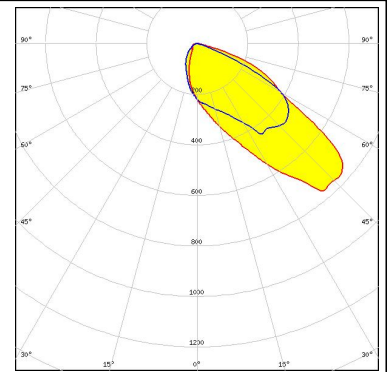
LED XP-G3
FWHM Asymmetric
Efficiency 94 %
Peak intensity 0.970 cd/lm
Required components:



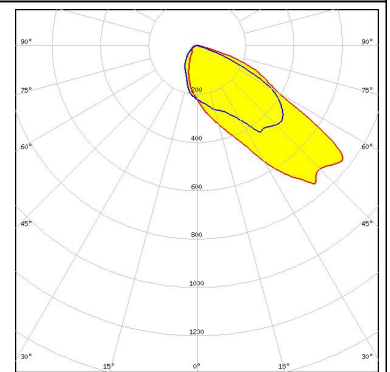
PHOTOMETRIC DATA (MEASURED):



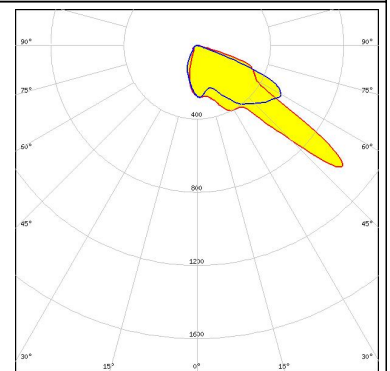
LED LUXEON 5050
 FWHM Asymmetric
 Efficiency 94 %
 Peak intensity 0.870 cd/lm
 Required components:



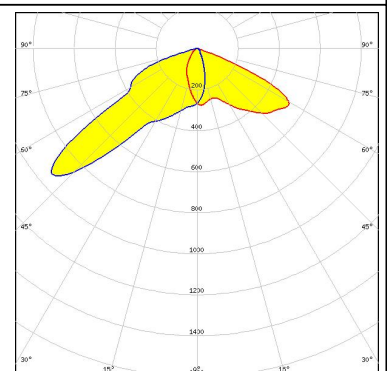
LED Duris S8
 FWHM Asymmetric
 Efficiency 94 %
 Peak intensity 0.890 cd/lm
 Required components:




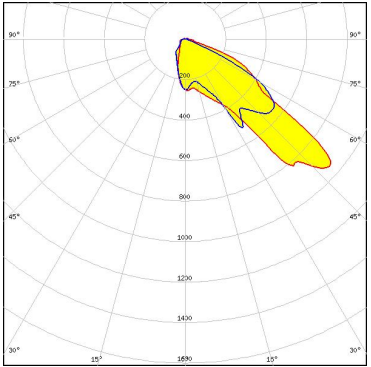
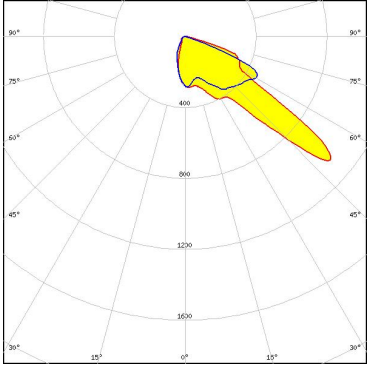
LED Oslon Square Gen3
 FWHM Asymmetric
 Efficiency 94 %
 Peak intensity 1.200 cd/lm
 Required components:



LED HiLOM RH12 (LH351C)
 FWHM Asymmetric
 Efficiency 94 %
 Peak intensity 1.000 cd/lm
 Required components:



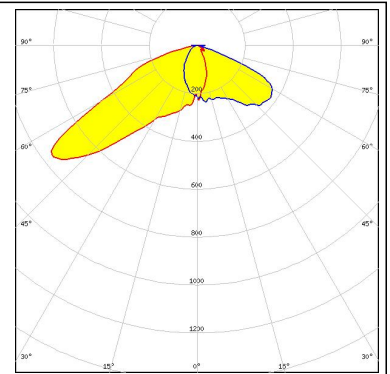
PHOTOMETRIC DATA (MEASURED):

 SEOUL SEMICONDUCTOR		
LED	SMJQ-D36W12Mx	
FWHM	Asymmetric	
Efficiency	94 %	
Peak intensity	1.100 cd/lm	
Required components:		
TRIDONIC		
LED	RLE 2x6 3000lm HP EXC2 OTD	
FWHM	Asymmetric	
Efficiency	94 %	
Peak intensity	1.200 cd/lm	
Required components:		

PHOTOMETRIC DATA (SIMULATED):

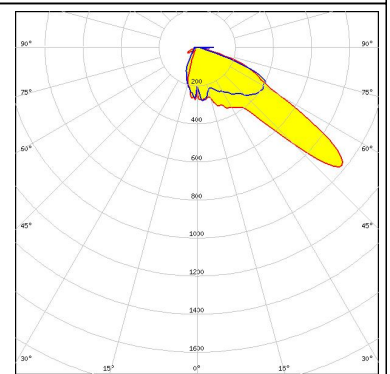
CREE 

LED XP-L2
FWHM Asymmetric
Efficiency 93 %
Peak intensity 0.800 cd/lm
Required components:



CREE 

LED XT-E
FWHM Asymmetric
Efficiency 0 %
Peak intensity 0.000 cd/lm
Required components:



GENERAL INFORMATION:

NOTE: The typical beam angle will be changed by different color, chip size and chip position tolerance. The typical total beam angle is the full angle measured where the luminous intensity is half of the peak value.

MATERIALS:

As part of our continuous research and improvement processes, and to ensure the best possible quality and availability of our products, LEDiL reserves the right to change material grades without notice.

PRODUCT DATA USER AGREEMENT AND DISCLAIMER:

The measured data in the provided downloadable LEDiL Product Datasheets and Mechanical 2D-Drawings is rounded and provided as reference for planning. LEDiL Oy's optical specifications have been verified by conducting performance testing of the products in accordance with the company's quality system. The reported data are averaged results of multiple measurements with typical variation. LEDiL Oy reserves the right to without prior notification make changes and improvements to its products.

LEDiL Oy assumes neither warranty, nor guarantee nor any other liability of any kind for the contents and correctness of the provided data. The provided data has been generated with highest diligence but the provided data may in reality not represent the complete possible variation range of all intrinsic parameters. Therefore, in certain cases a deviation from the provided data could occur.

LEDiL Oy reserves the right to undertake technical changes of its products without further notification which could lead to changes in the provided data. LEDiL Oy assumes no liability of any kind for the possible deviation from any provided data or any other damage resulting from the usage of the provided data.

The user agrees to this disclaimer and user agreement with the download or usage of the provided files.

LEDiL Oy

Joensuunkatu 13
FI-24240 SALO
Finland

LEDiL Inc.

228 West Page Street
Suite D
Sycamore IL 60178
USA

Local sales and technical support

[www.ledil.com/
where_to_buy](http://www.ledil.com/where_to_buy)

Shipping locations

Salo, Finland
Hong Kong, China

Distribution Partners

[www.ledil.com/
where_to_buy](http://www.ledil.com/where_to_buy)