



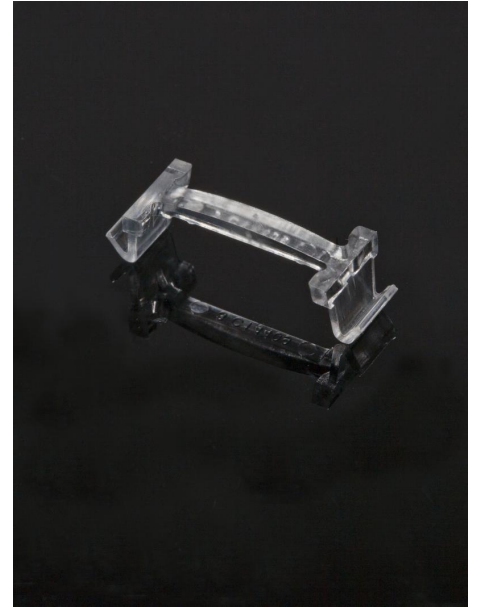
PRODUCT DATASHEET

Florence series

last update 8/9/2014

DETAILS

| | |
|------------------------|---------------------------|
| Product Number | C14409_FLORENCE-1R-CLIP-B |
| Family | Florence |
| Type | Accessory |
| Color | clear |
| Diameter | mm |
| Height | mm |
| Style | |
| Optic Material | PC |
| Holder Material | |
| Fastening | clips |
| Status | production ready |
| ROHS Compliant | Yes |
| Date Updated | 8/09/2014 |



OPTICAL PROPERTIES

| LED | Viewing Angle | Light Beam | Efficiency | cd/lm | Connector |
|-----|---------------|------------|------------|------------|-----------|
| | N/A deg | | - | sim: 0.000 | - |

D

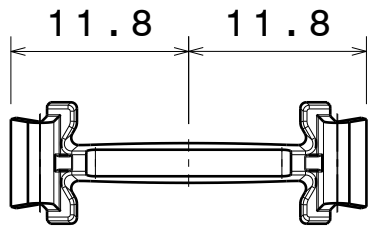
C

B

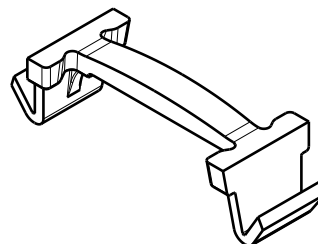
A

4

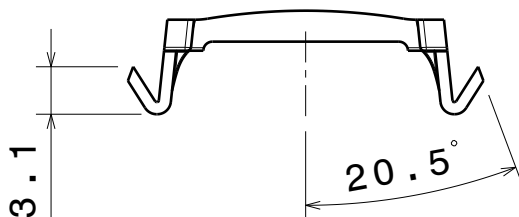
4



Bottom view



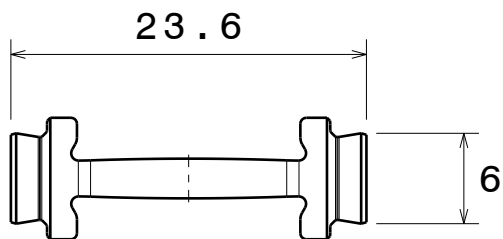
Isometric view



Right view



Front view



Top view

3

3

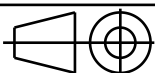
2

2

Tolerances if not otherwise shown
 According to DIN ISO 2768-1
 Linear measures: class C
 According to DIN ISO 2768-2
 Form and position: class L

LEDiL Ledil Oy
 Salorankatu 10
 FIN 24240 SALO
 Finland

THIRD ANGLE PROJECTION:



DRAWING TITLE

FLORENCE-1R-CLIP-B Datasheet

This drawing is the property
 of LEDiL Oy. It may not be
 reproduced, copied or
 communicated without a written
 agreement with LEDiL Oy.

SIZE PART NUMBER

A4

C14409

SCALE 2:1 WEIGHT -

SHEET 1/1

D

A

1

1

NOTE: The typical divergence will be changed by different color, chip size and chip position tolerance. The typical total divergence is the full angle measured where the luminous intensity is half of the peak value.