



# PRODUCT DATASHEET

## Vanessa series

last update 12/3/2015

### DETAILS

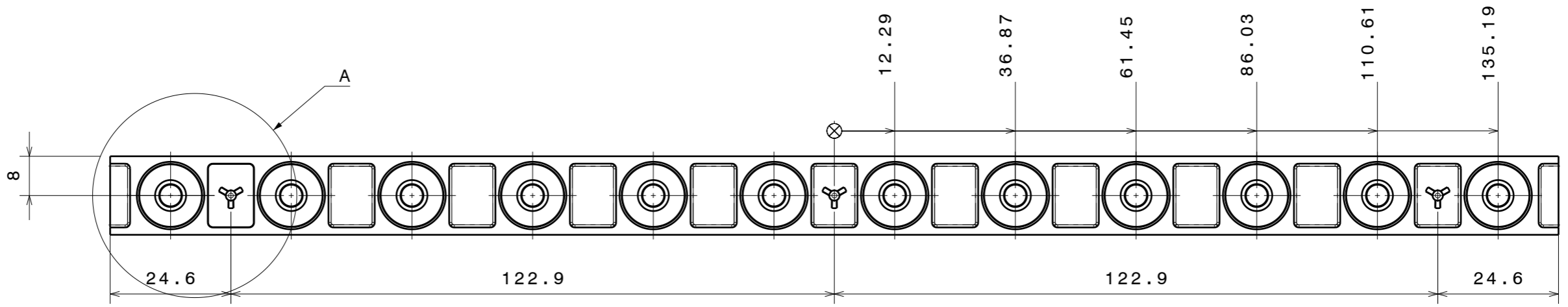
<b>Product Number</b>	C13871_VANESSA-B-O
<b>Family</b>	Vanessa
<b>Type</b>	Lens
<b>Color</b>	clear
<b>Diameter</b>	295x16 mm
<b>Height</b>	8 mm
<b>Style</b>	rectang
<b>Optic Material</b>	PMMA
<b>Holder Material</b>	
<b>Fastening</b>	
<b>Status</b>	production ready
<b>ROHS Compliant</b>	Yes
<b>Date Updated</b>	17/04/2015



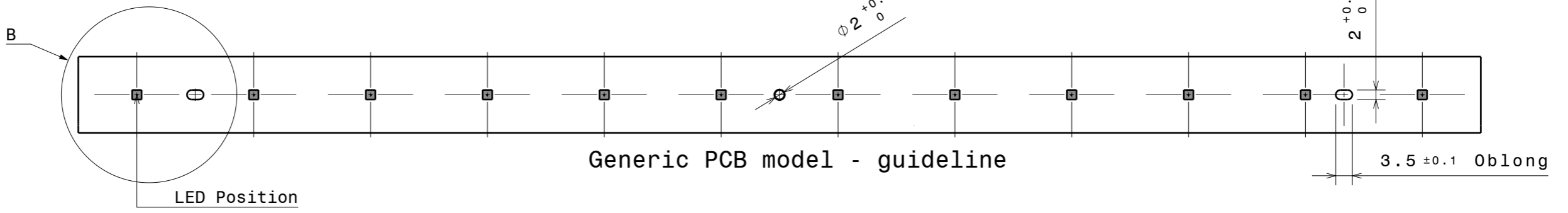
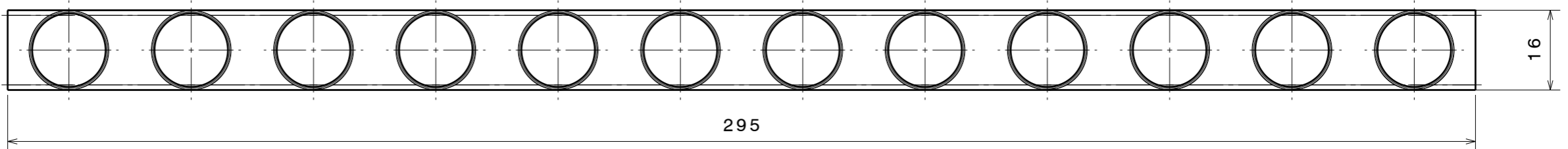
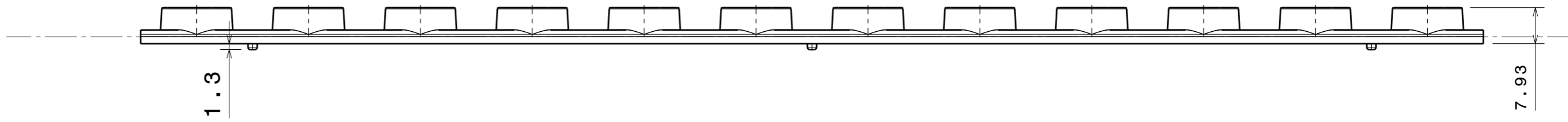
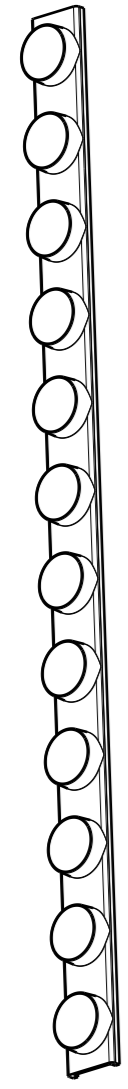
### OPTICAL PROPERTIES

LED	Viewing Angle	Light Beam	Efficiency	cd/lm	Connector
XB-D	sim: 50+19	Oval	sim: 83 %	sim: 1.900	-
XP-E	45+18 deg	Oval	88 %	2.100	-
LUXEON Rebel ES	45+21 deg	Oval	89 %	1.800	-
Oslon Square EC	45+20 deg	Oval	90 %	1.780	-
XP-G	46+21 deg	Oval	87 %	1.700	-
XP-G2	46+21 deg	Oval	88 %	1.790	-

H G F E D C B A



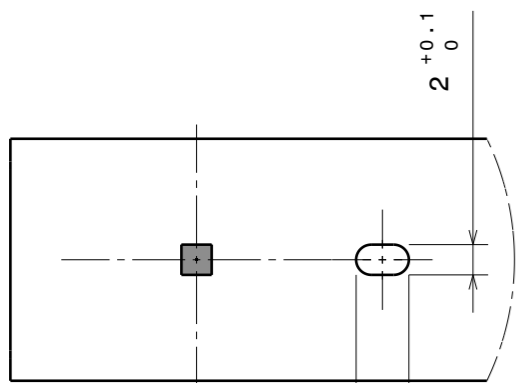
Isometric view  
Scale: 1:2



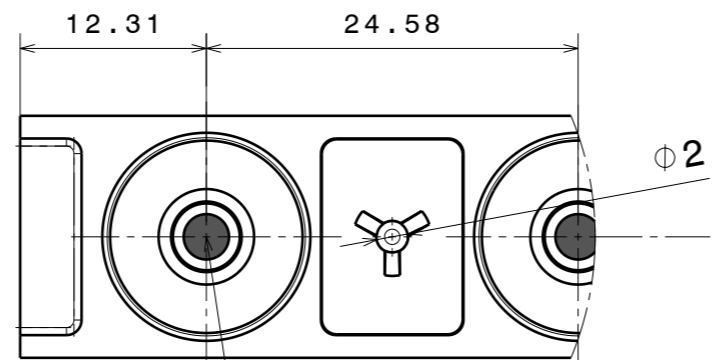
Generic PCB model - guideline

LED Position

3.5 ± 0.1 Oblong



Detail B  
Scale: 2:1



Detail A  
Scale: 2:1

LED position

Tolerances if not otherwise shown  
Linear measures: class C  
according to DIN ISO 2768-1  
Form and position: class L  
according to DIN ISO 2768-2

THIRD ANGLE PROJECTION:

This drawing is the property of LEDiL Oy. It may not be reproduced, copied or communicated without a written agreement with LEDiL Oy."

INDEX	PART NO	DESCRIPTION	MATERIAL	COLOUR
1	Datasheet	VANESSA	PMMA	Clear

**LEDiL** LediL Oy  
Salorankatu 10  
FIN 24240 SALO  
Finland

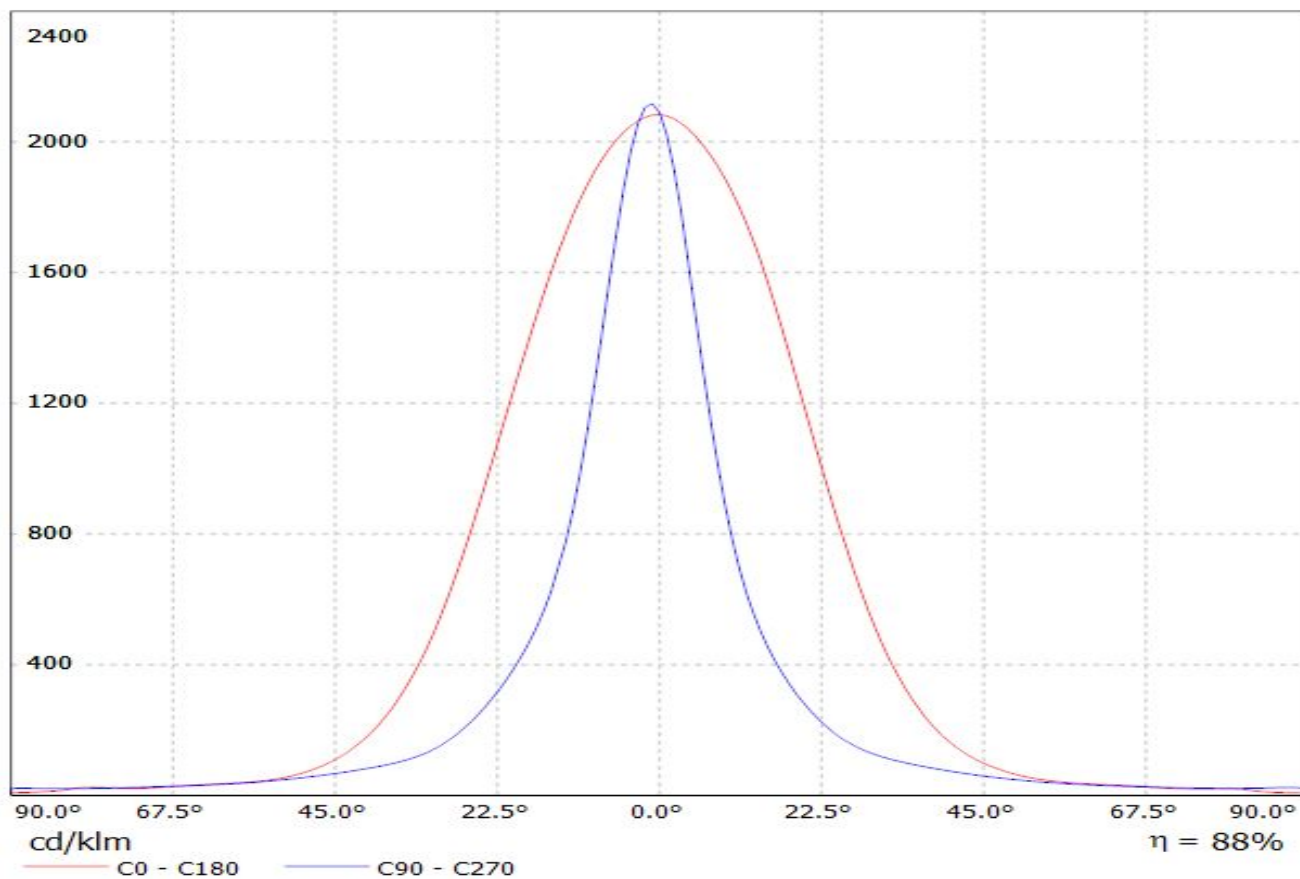
DRAWING TITLE  
**Datasheet\_VANESSA**

SIZE PART NUMBER  
**A3** -

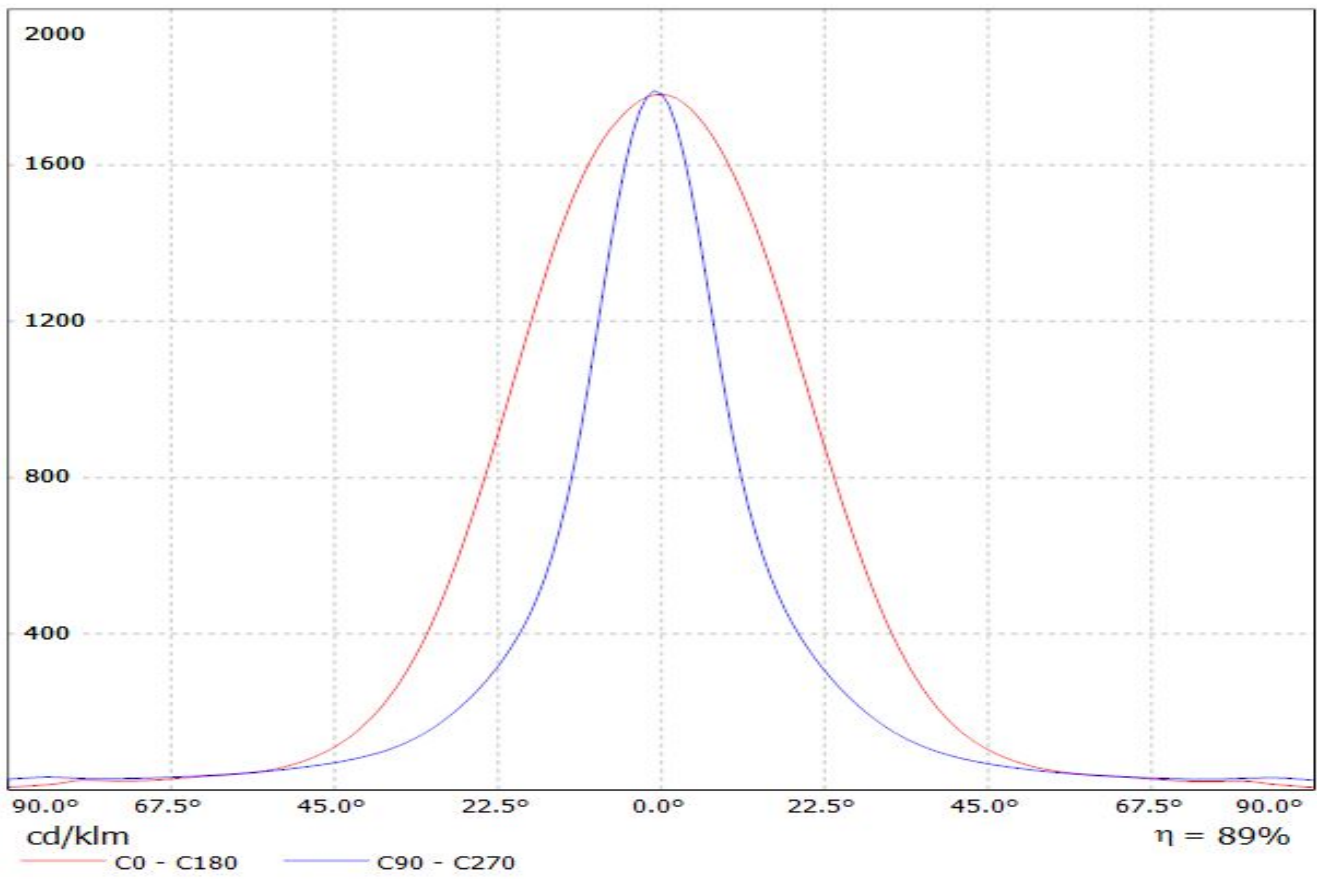
SCALE 1:1 WEIGHT (g) SHEET 1/1

H G B A

Luminaire: LEDiL Oy C13871\_VANESSA-B-O\_(XP-E)  
Lamps: 1 x CREE\_XP-E\_12x1 910lm@250mA

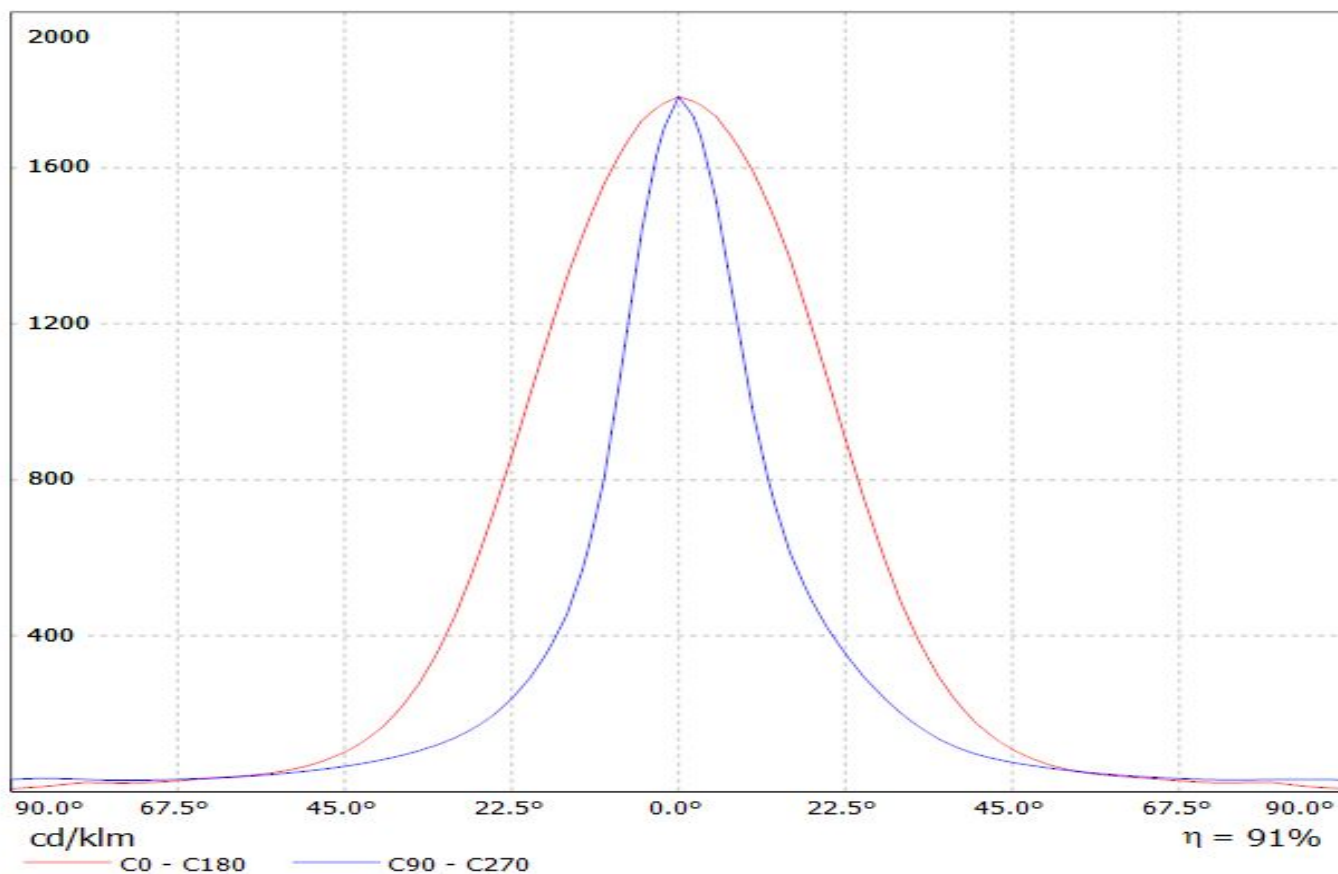


Luminaire: LEDiL Oy C13871\_VANESSA-B-O\_(REBEL-ES)  
Lamps: 1 x REBEL-ES\_12x1\_811@250mA\_P=9.07798W\_I=249.8mA



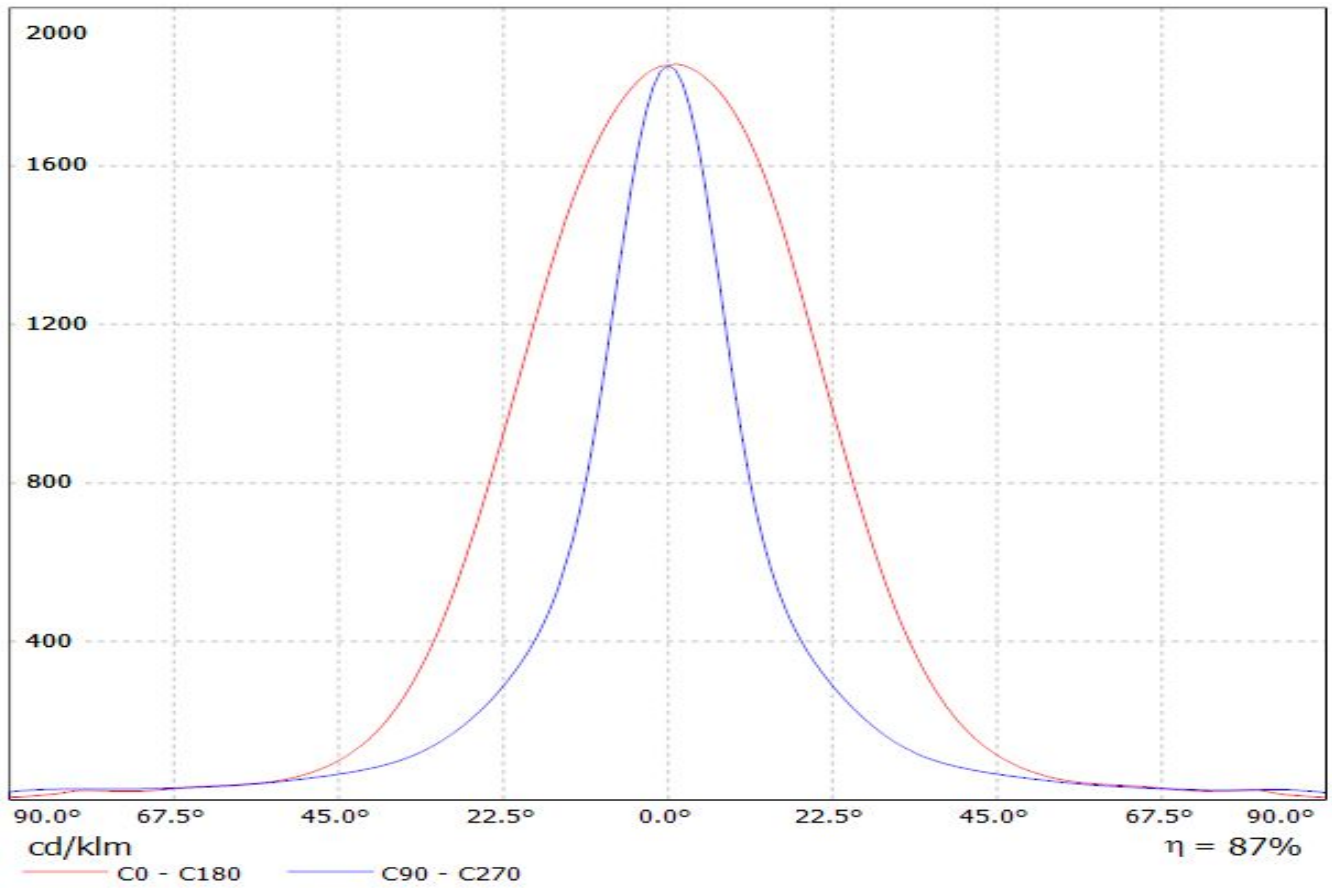
Luminaire: LEDiL Oy C13871\_VANESSA-B-O (SQ-EC)

Lamps: 1 x Osram\_Square\_EC\_962.49lm@250mA\_P=8.83543W\_I=249.8mA

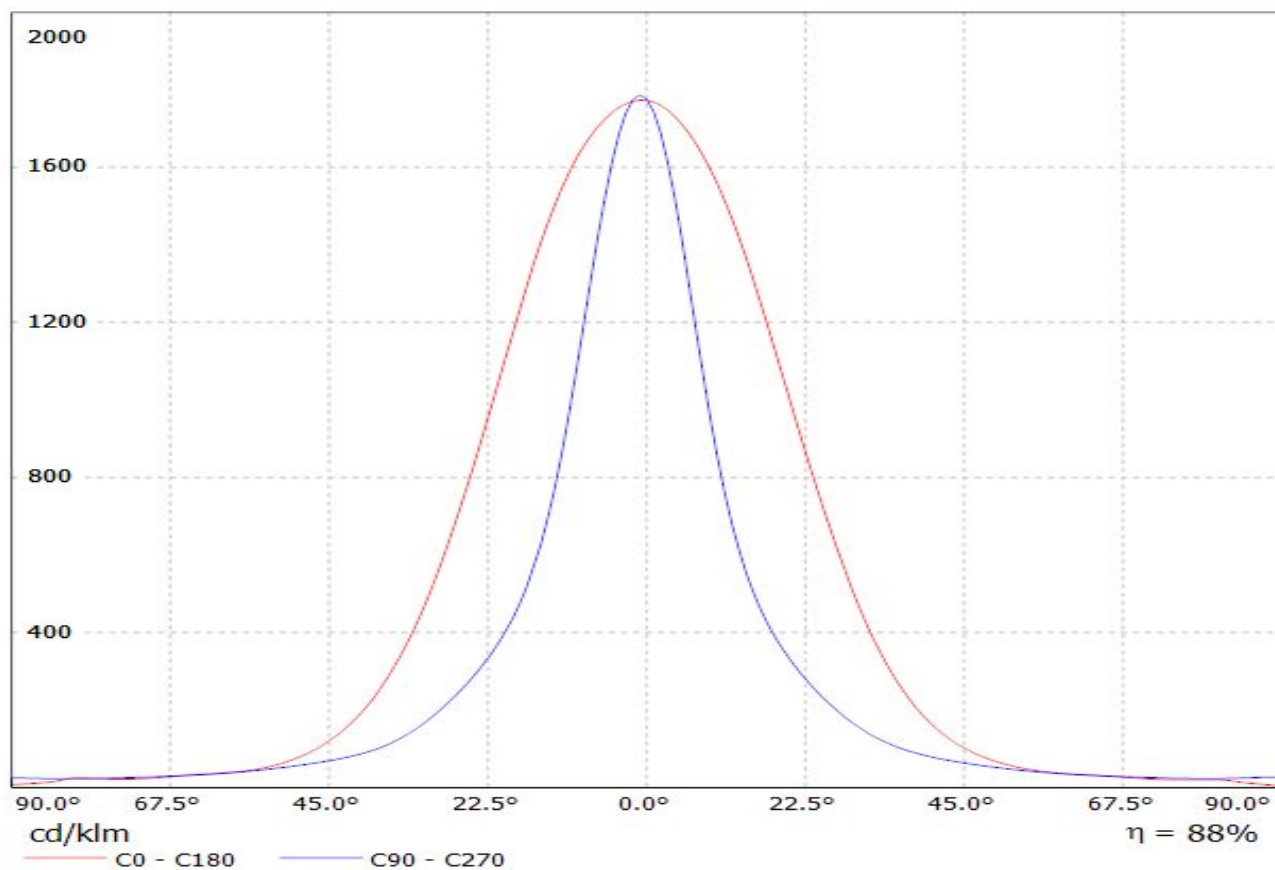


Luminaire: LEDiL Oy C13871\_VANESSA-B-O\_(XP-G)

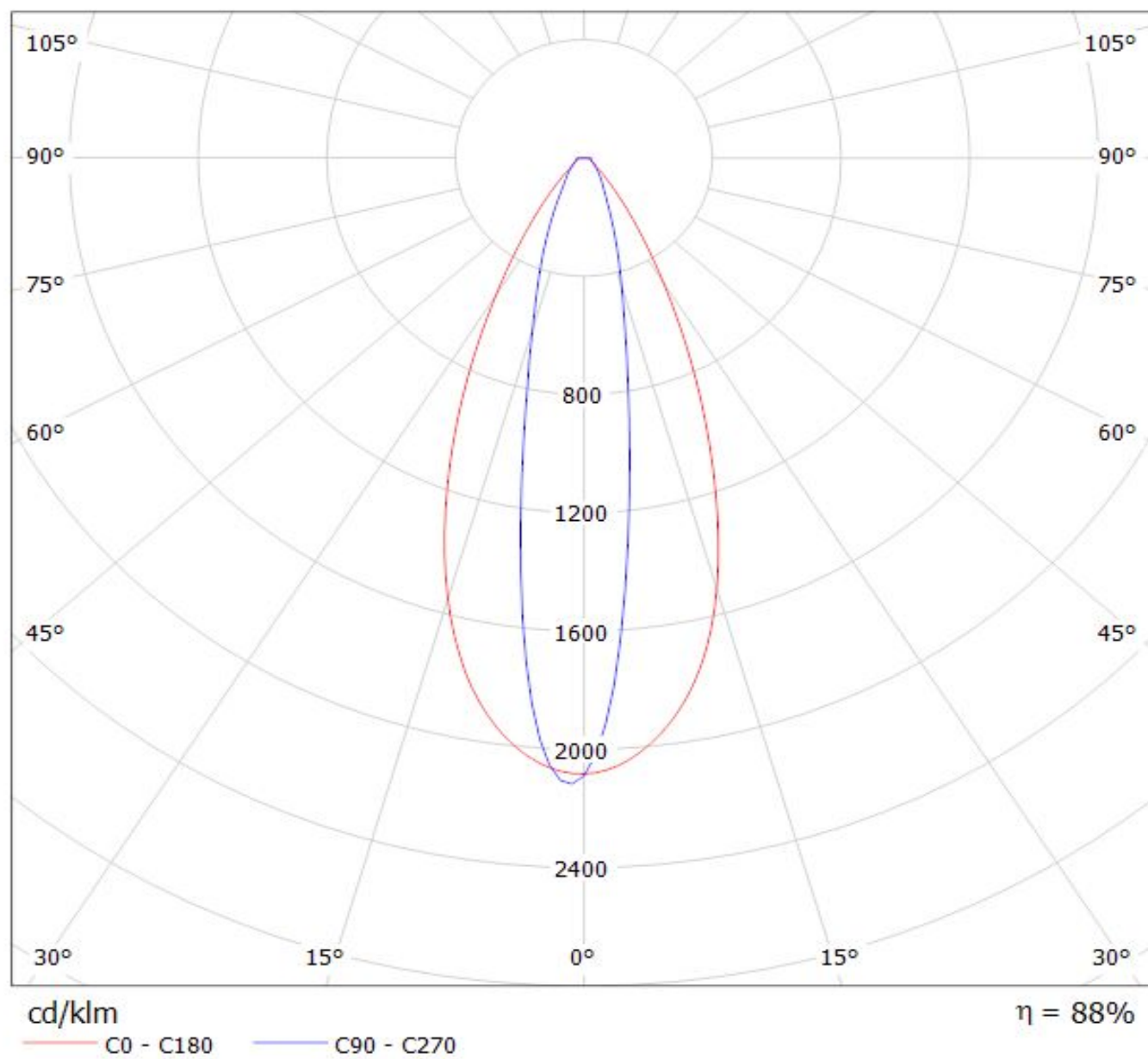
Lamps: 1 x CREE\_XP-G\_(XPGWHT-L1-4C0-R5-0-09)\_1113.14lm@250mA\_P=8.48621W\_I=249.8mA



Luminaire: LEDiL Oy C13871\_VANESSA-B-O\_(XP-G2)  
Lamps: 1 x CREE\_XP-G2\_12x1\_1174.06@250mA\_P=8.65107\_I=249.8mA



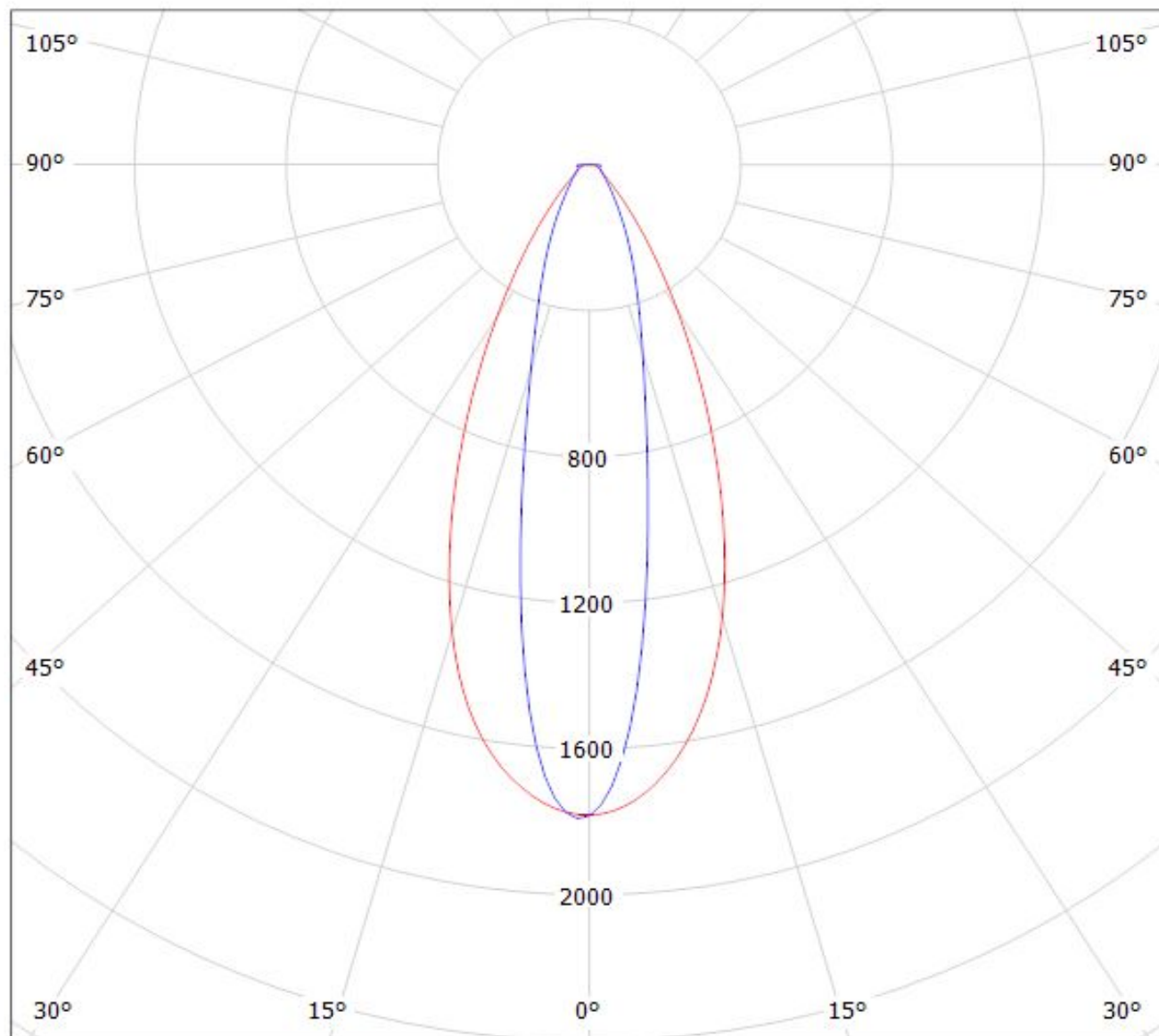
Luminaire: LEDiL Oy C13871\_VANESSA-B-O\_(XP-E)  
Lamps: 1 x CREE\_XP-E\_12x1 910lm@250mA





Luminaire: LEDiL Oy C13871\_VANESSA-B-O\_(REBEL-ES)

Lamps: 1 x REBEL-ES\_12x1\_811@250mA\_P=9.07798W\_I=249.8mA



cd/klm

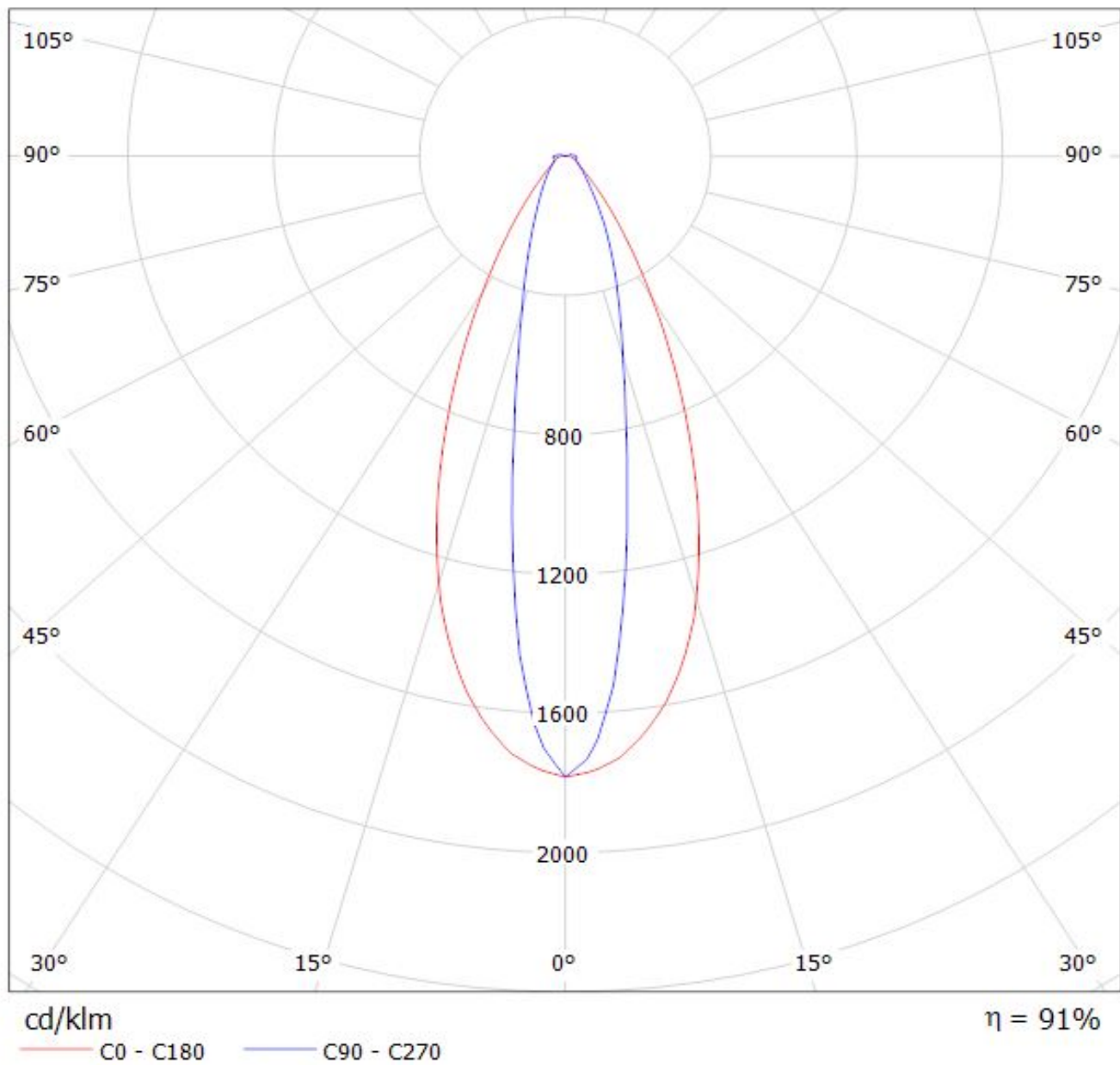
— C0 - C180

— C90 - C270

$\eta = 89\%$

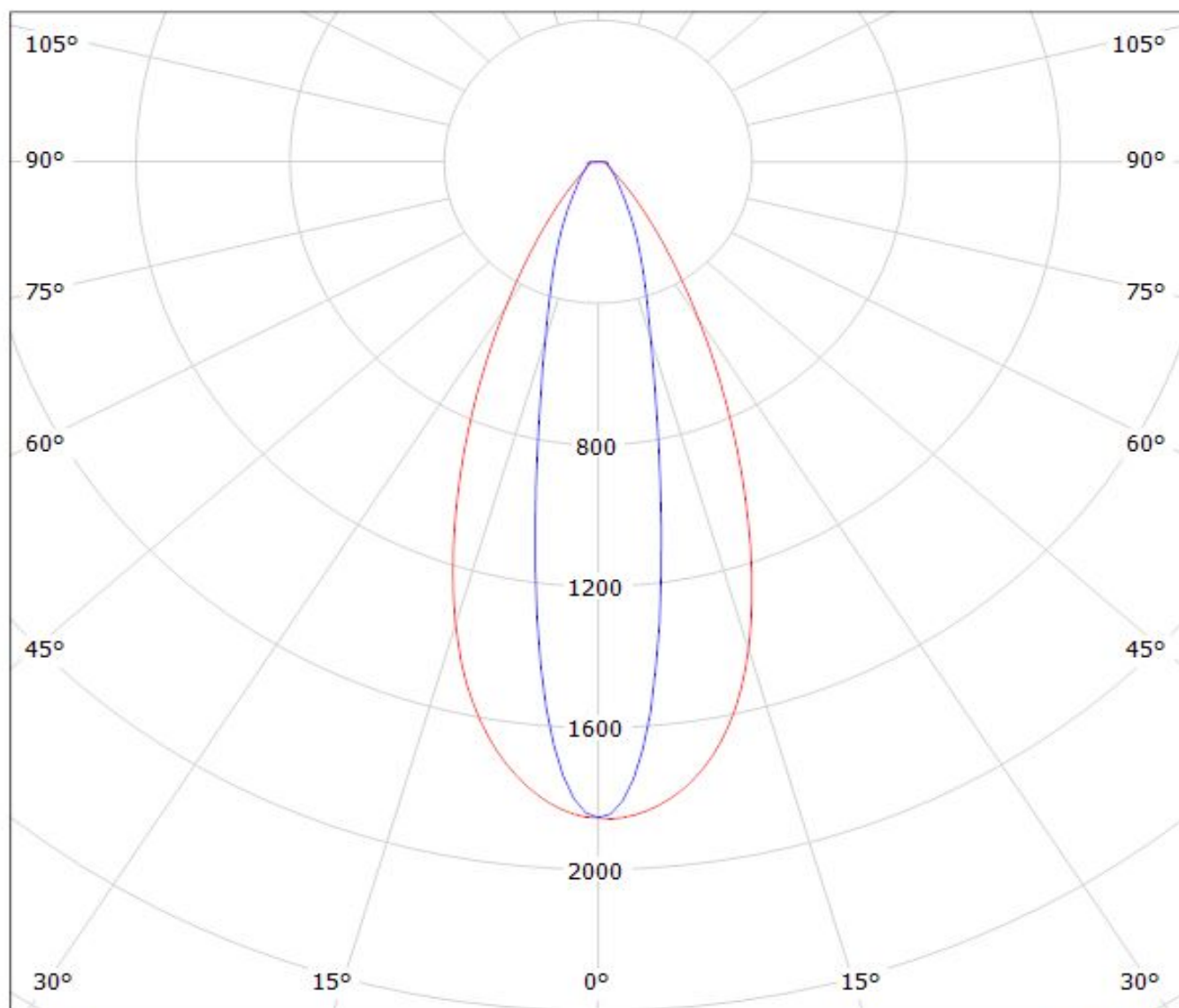
Luminaire: LEDiL Oy C13871\_VANESSA-B-O\_(SQ-EC)

Lamps: 1 x Osram\_Square\_EC\_962.49lm@250mA\_P=8.83543W\_I=249.8mA



Luminaire: LEDiL Oy C13871\_VANESSA-B-O\_(XP-G)

Lamps: 1 x CREE\_XP-G\_(XPGWHT-L1-4C0-R5-0-09)\_1113.14lm@250mA\_P=8.48621W\_I=249.8mA



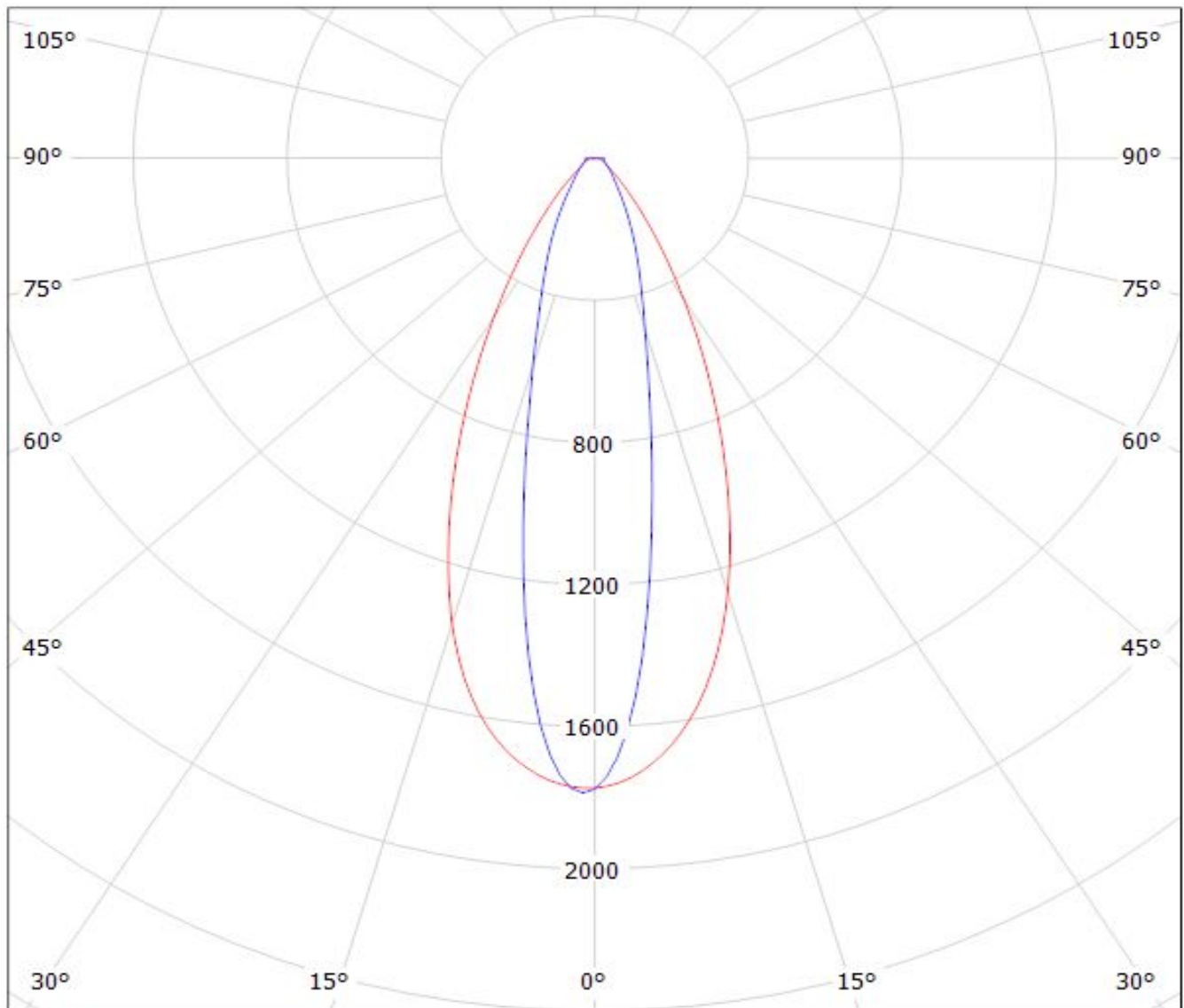
cd/klm

— C0 - C180    — C90 - C270

$\eta = 87\%$

Luminaire: LEDiL Oy C13871\_VANESSA-B-O\_(XP-G2)

Lamps: 1 x CREE\_XP-G2\_12x1\_1174.06@250mA\_P=8.65107\_I=249.8mA



cd/klm

— C0 - C180

— C90 - C270

$\eta = 88\%$

**NOTE: The typical divergence will be changed by different color, chip size and chip position tolerance. The typical total divergence is the full angle measured where the luminous intensity is half of the peak value.**