

## DETAILS

<b>Product Number</b>	C13869_VANESSA-B-S
<b>Family</b>	Vanessa
<b>Type</b>	Lens
<b>Color</b>	clear
<b>Diameter</b>	mm
<b>Height</b>	8 mm
<b>Style</b>	rectang
<b>Optic Material</b>	PMMA
<b>Holder Material</b>	
<b>Fastening</b>	
<b>Status</b>	ready
<b>ROHS Compliant</b>	Yes
<b>Date Updated</b>	9/05/2014



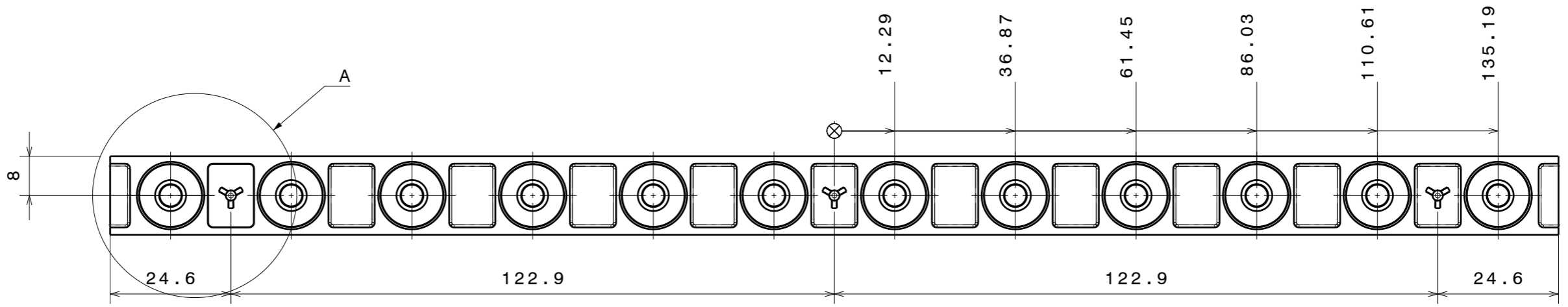
## OPTICAL PROPERTIES

LED	Viewing Angle	Light Beam	Efficiency	cd/lm	Connector
Oslon Square EC	17 deg	Spot	94 %	4.180	-
XP-E	17 deg	Spot	94 %	4.923	-
XP-G	19 deg	Spot	94 %	4.019	-
XP-G2	19 deg	Spot	94 %	3.938	-
XT-E	19 deg	Spot	94 %	4.008	-
LUXEON Rebel ES	19 deg	Spot	94 %	3.827	-

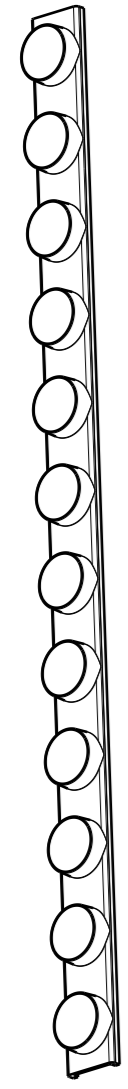
H G F E D C B A

4

4

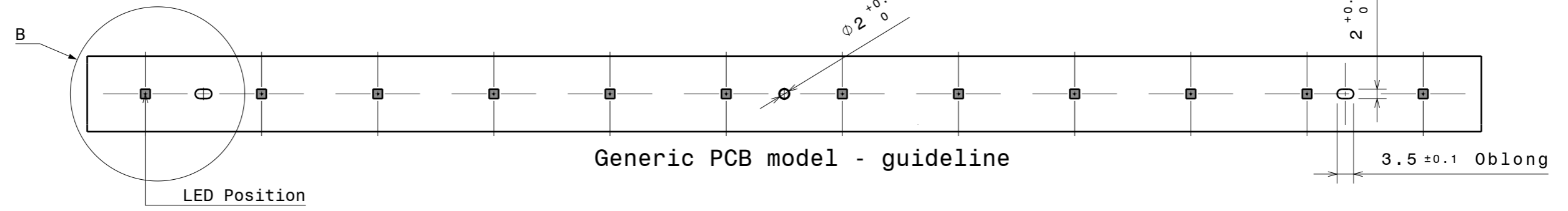
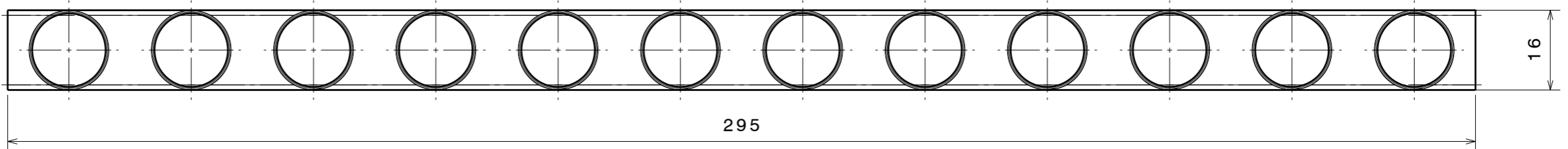
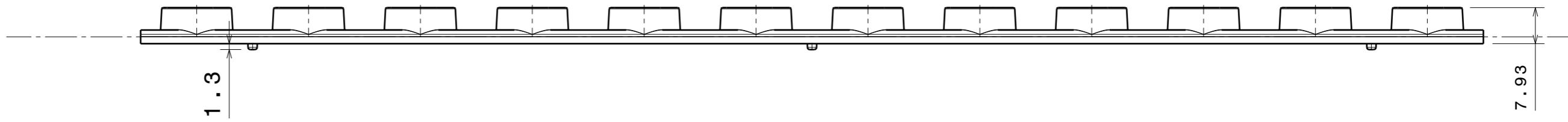


Isometric view  
Scale: 1:2



3

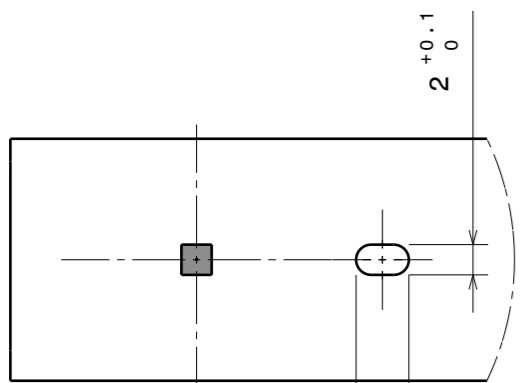
3



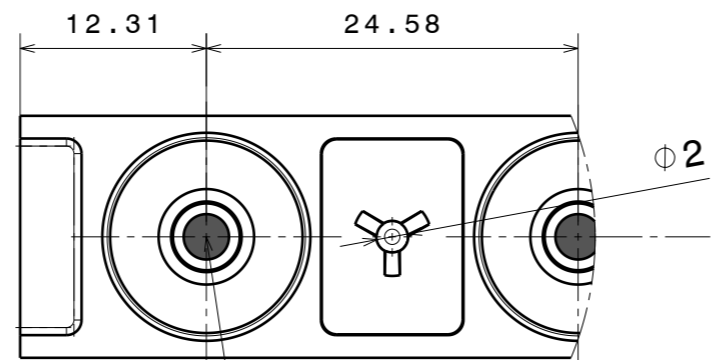
Generic PCB model - guideline

2

2



Detail B  
Scale: 2:1



Detail A  
Scale: 2:1

INDEX	PART NO	DESCRIPTION	MATERIAL	COLOUR
1	Datasheet	VANESSA	PMMA	Clear



Ledil Oy  
Salorankatu 10  
FIN 24240 SALO  
Finland

Tolerances if not otherwise shown  
Linear measures: class C  
according to DIN ISO 2768-1  
Form and position: class L  
according to DIN ISO 2768-2

THIRD ANGLE PROJECTION:

This drawing is the property of LEDiL Oy. It may not be reproduced, copied or communicated without a written agreement with LEDiL Oy."

DRAWING TITLE  
**Datasheet\_VANESSA**

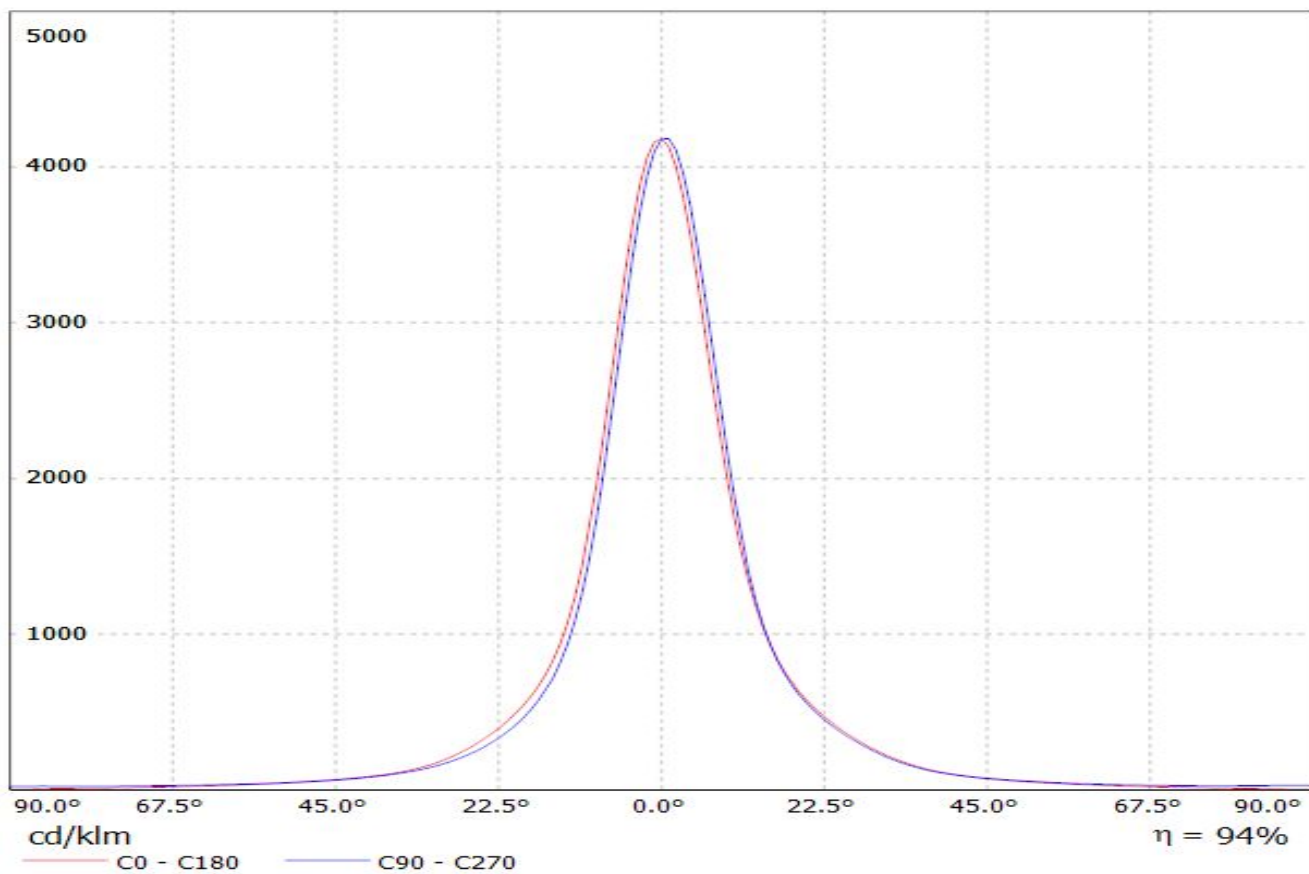
SIZE PART NUMBER  
**A3** -

SCALE 1:1 WEIGHT (g) SHEET 1/1

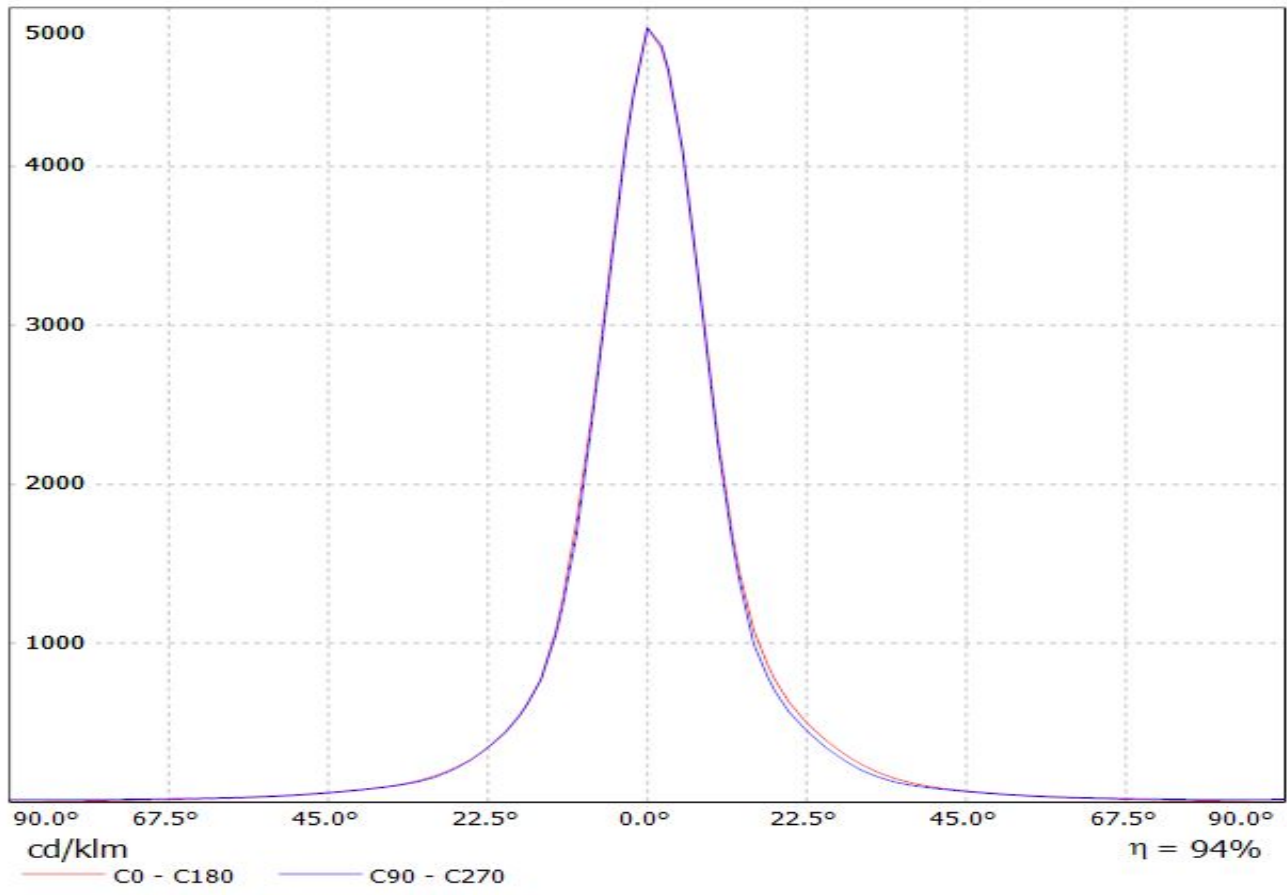
H G B A

1

Luminaire: LEDiL Oy C13869\_VANESSA-B-S\_(SQ-EC)  
Lamps: 1 x Osram\_Square\_EC\_962.49lm@250mA\_P=8.83543W\_I=249.8mA

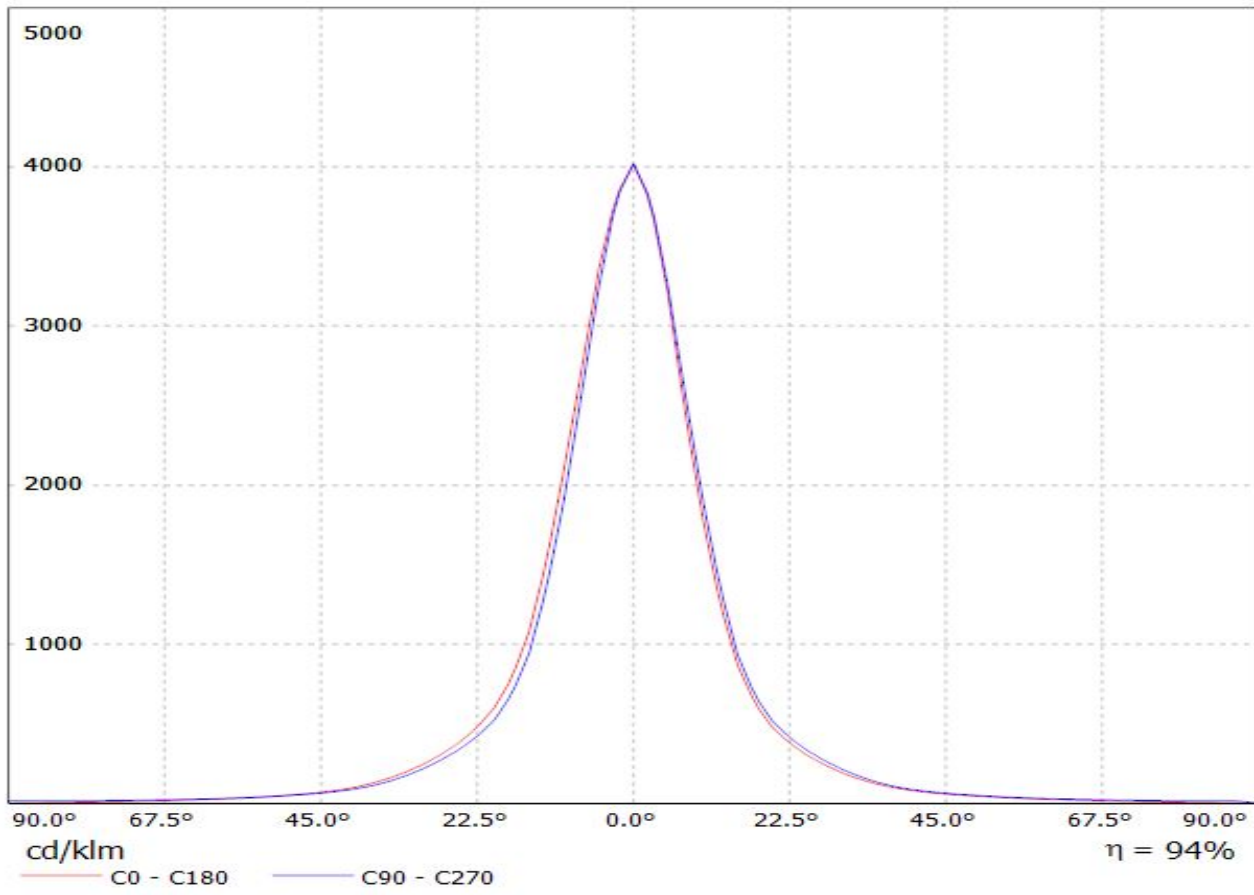


Luminaire: LEDiL Oy C13869\_VANESSA-B-S\_(XP-E)\_C1 Eff.94.1%  
Lamps: 1 x CREE\_XP-E\_1x12\_909.494lm@250mA\_P=9.01928W\_I=249.8mA

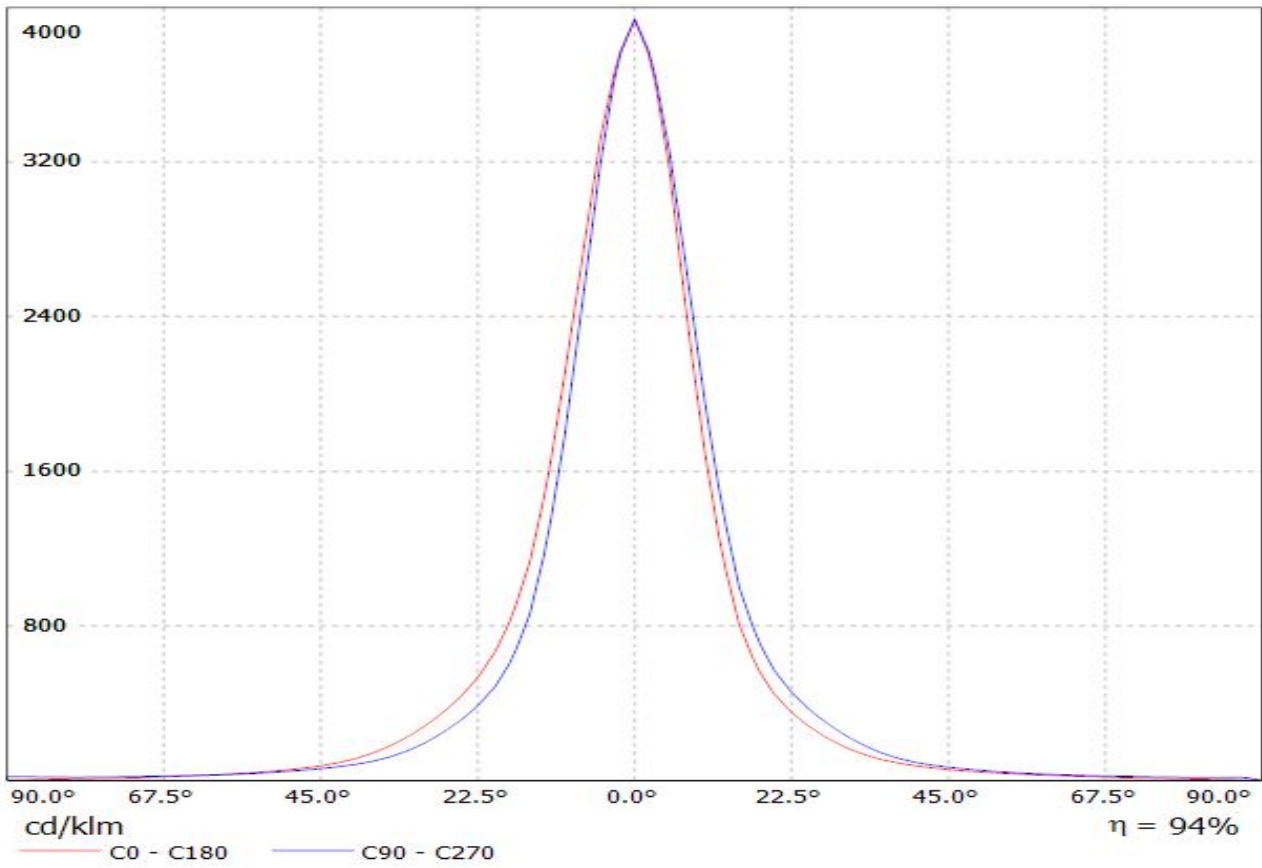


Luminaire: LEDiL Oy C13869\_VANESSA-B-S\_(XP-G) Eff.93.5%

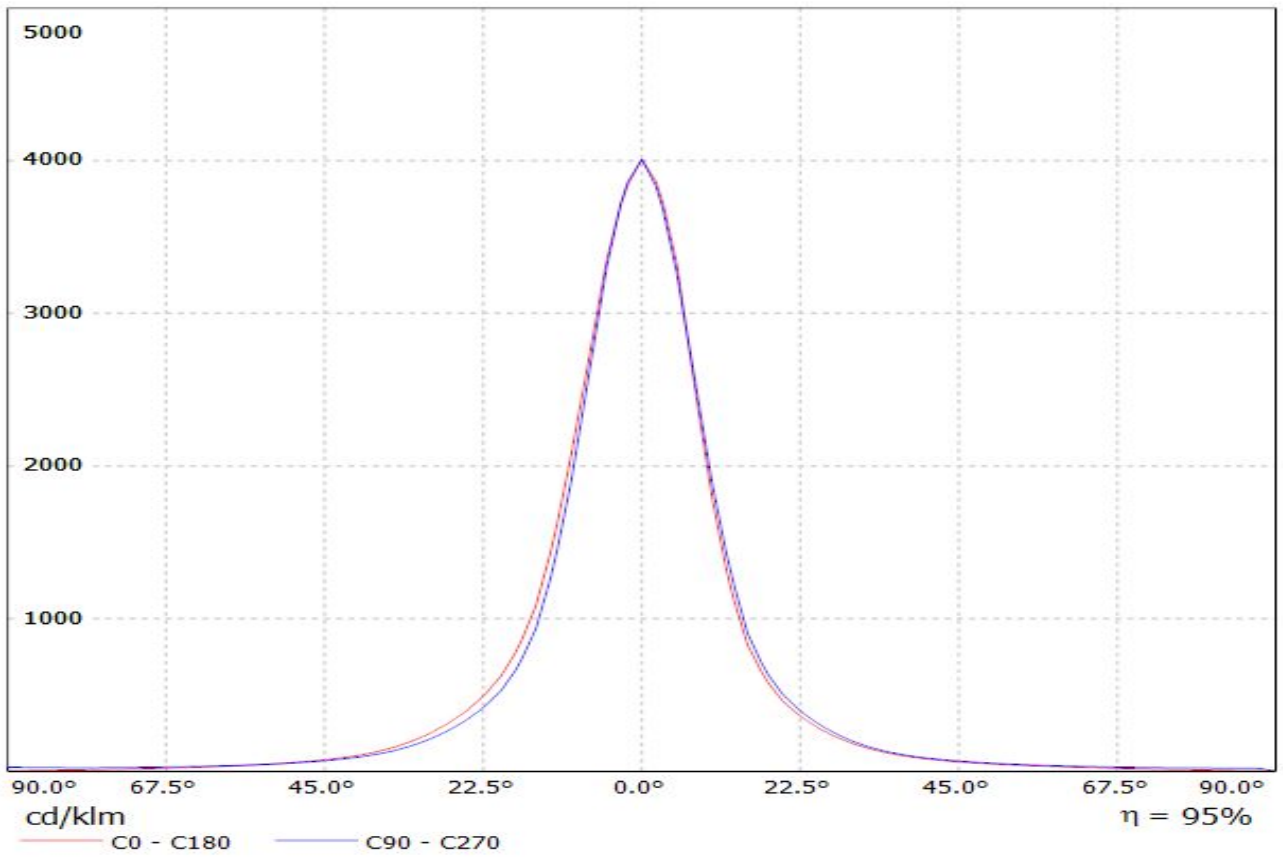
Lamps: 1 x CREE\_XP-G\_1x12\_(XPGWHT-L1-4C0-R5-0-09)\_1082.98lm@250mA\_P=8.40802W\_I=249.8mA



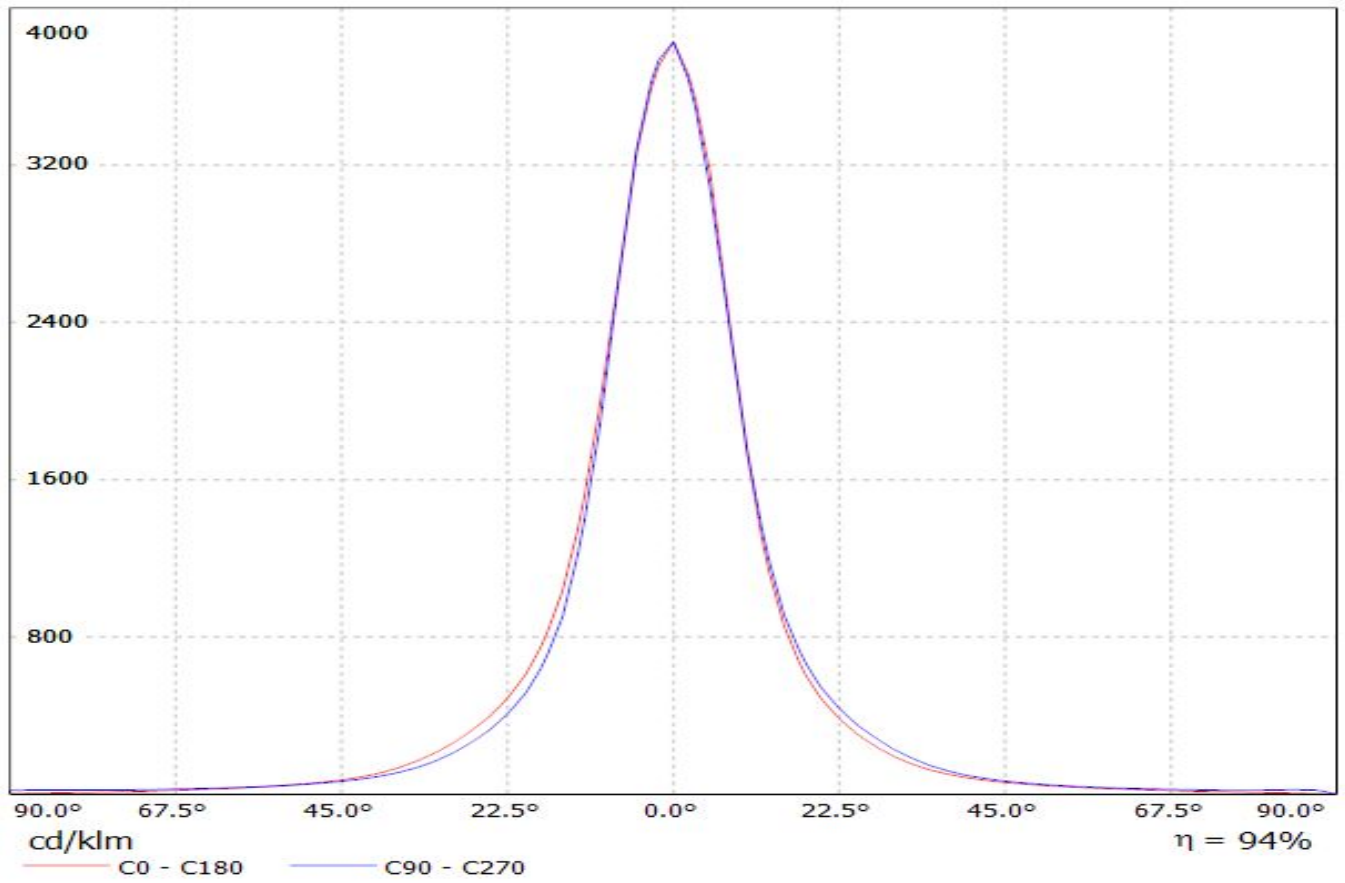
Luminaire: LEDiL Oy C13869\_VANESSA-B-S\_(XP-G2) Eff.93.8%  
Lamps: 1 x CREE\_XP-G2\_1x12\_1163.02@250mA\_P=8.65107W\_I=249.8mA



Luminaire: LEDiL Oy C13869\_VANESSA-B-S\_(XT-E) Eff.94.7%  
Lamps: 1 x CREE\_XT-E\_12x1\_1154.6lm@250mA\_P=8.79671W\_I=249.8mA



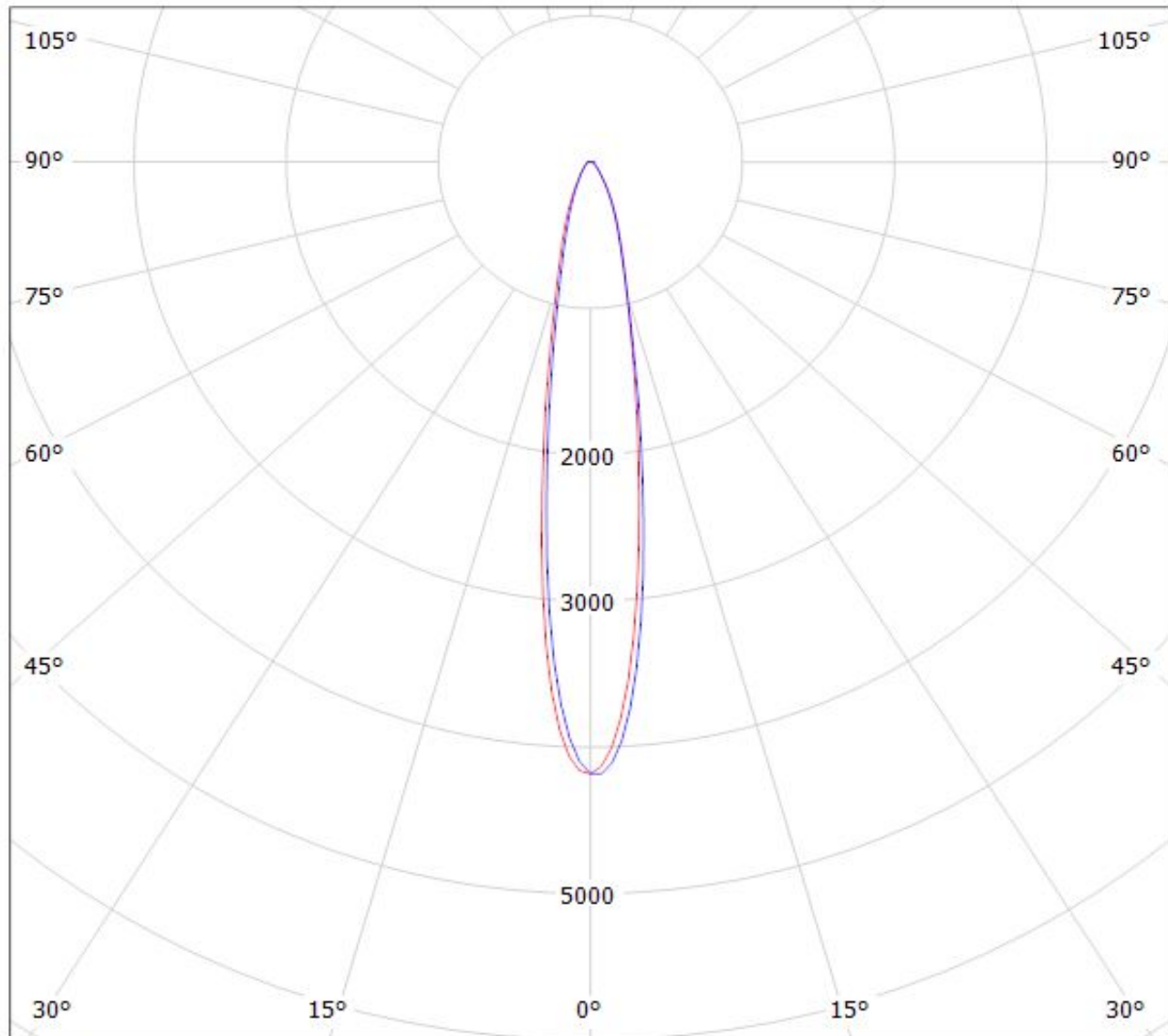
Luminaire: LEDiL Oy C13869\_VANESSA-B-S\_(REBEL-ES) Eff.93.8%  
Lamps: 1 x LUXEON\_REBEL-ES\_12x1\_811.634@250mA\_P=9.06474W\_I=249.8mA





Luminaire: LEDiL Oy C13869\_VANESSA-B-S\_(SQ-EC)

Lamps: 1 x Osram\_Square\_EC\_962.49lm@250mA\_P=8.83543W\_I=249.8mA



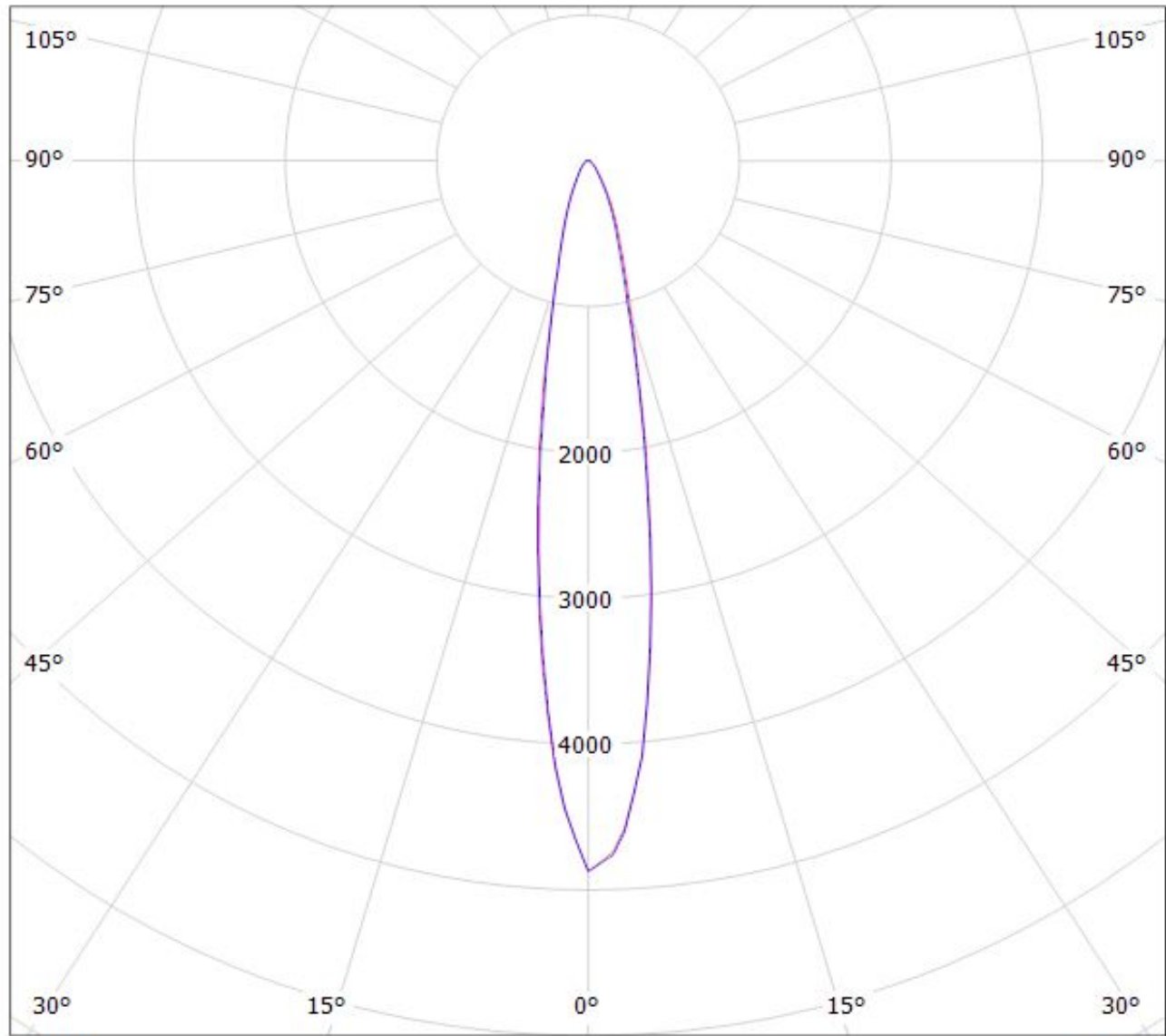
cd/klm

— C0 - C180

— C90 - C270

$\eta = 94\%$

Luminaire: LEDiL Oy C13869\_VANESSA-B-S\_(XP-E)\_C1 Eff.94.1%  
Lamps: 1 x CREE\_XP-E\_1x12\_909.494lm@250mA\_P=9.01928W\_I=249.8mA



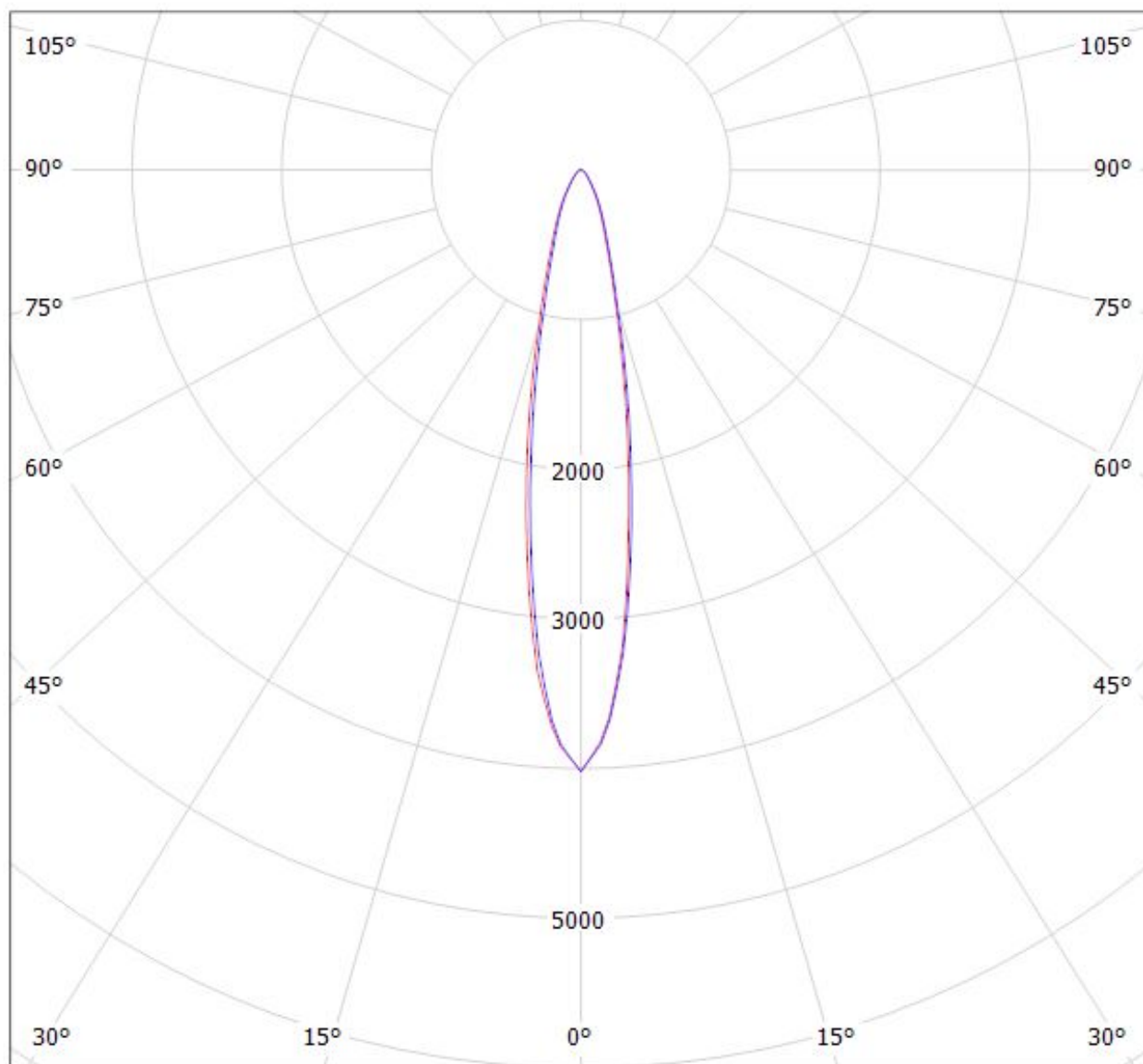
cd/klm

— C0 - C180 — C90 - C270

$\eta = 94\%$

Luminaire: LEDiL Oy C13869\_VANESSA-B-S\_(XP-G) Eff.93.5%

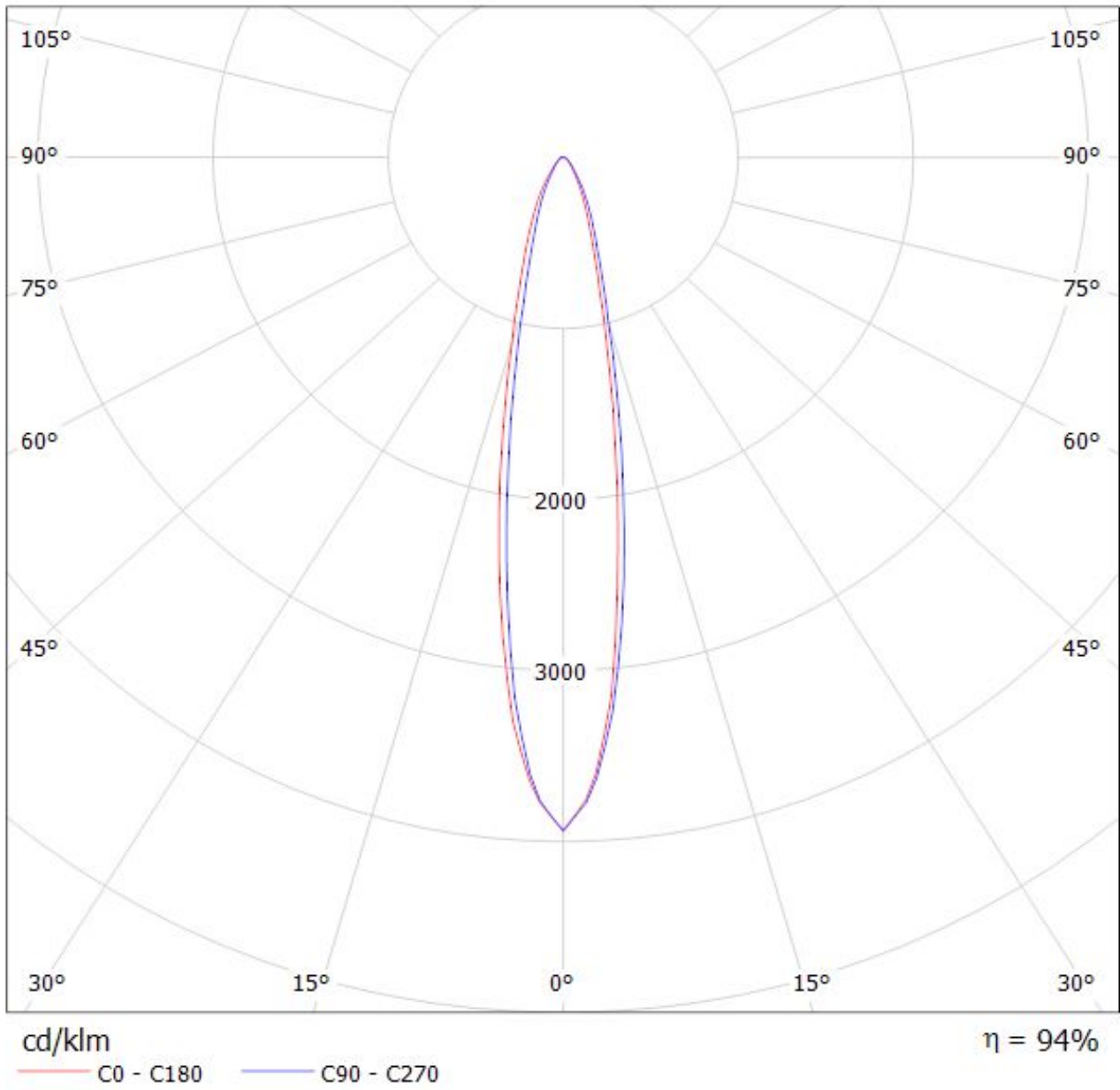
Lamps: 1 x CREE\_XP-G\_1x12\_(XPGWHT-L1-4C0-R5-0-09)\_1082.98lm@250mA\_P=8.40802W\_I=249.8mA



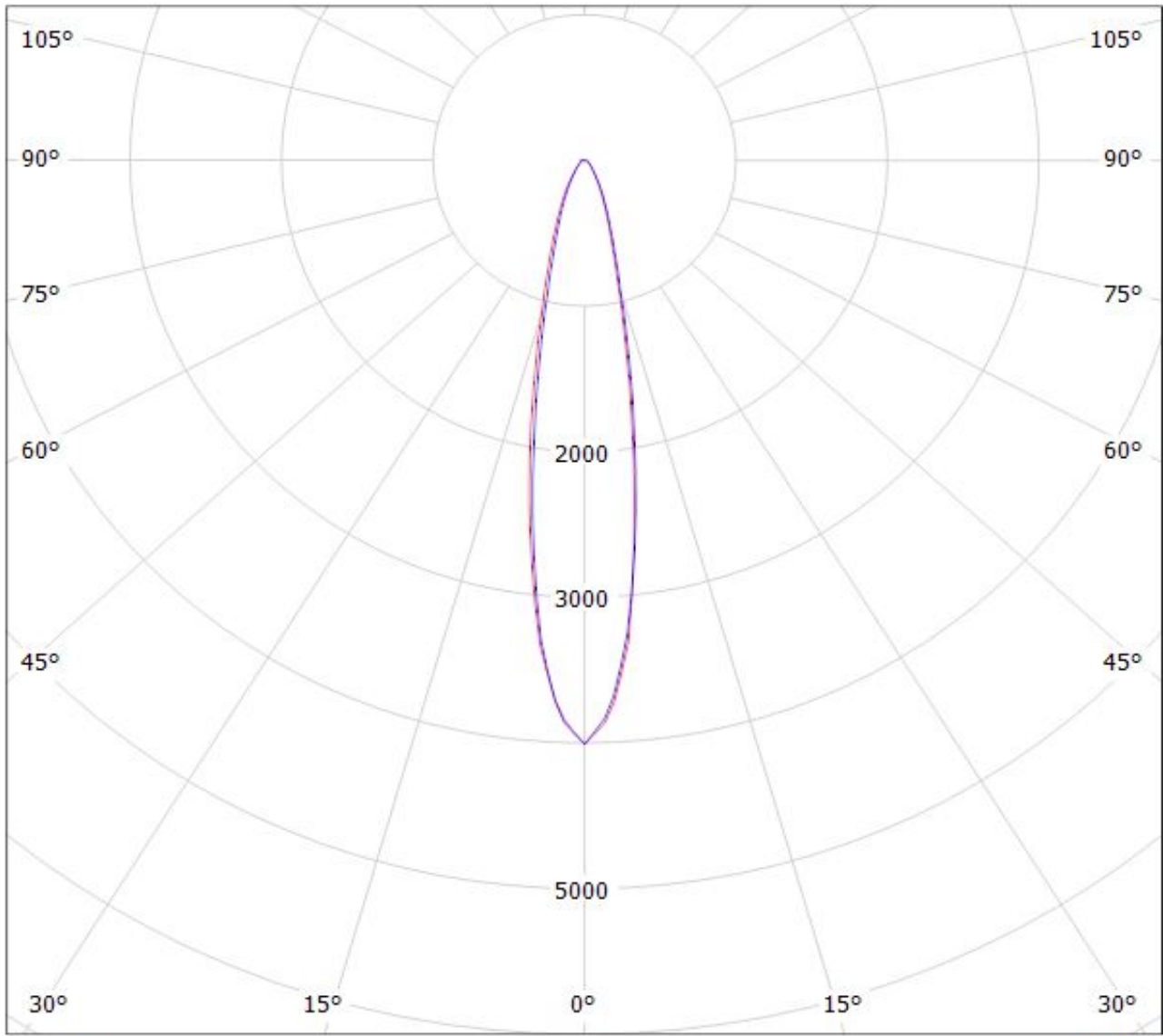
$\eta = 94\%$

— C0 - C180 — C90 - C270

Luminaire: LEDiL Oy C13869\_VANESSA-B-S\_(XP-G2) Eff.93.8%  
Lamps: 1 x CREE\_XP-G2\_1x12\_1163.02@250mA\_P=8.65107W\_I=249.8mA



Luminaire: LEDiL Oy C13869\_VANESSA-B-S\_(XT-E) Eff.94.7%  
Lamps: 1 x CREE\_XT-E\_12x1\_1154.61lm@250mA\_P=8.79671W\_I=249.8mA

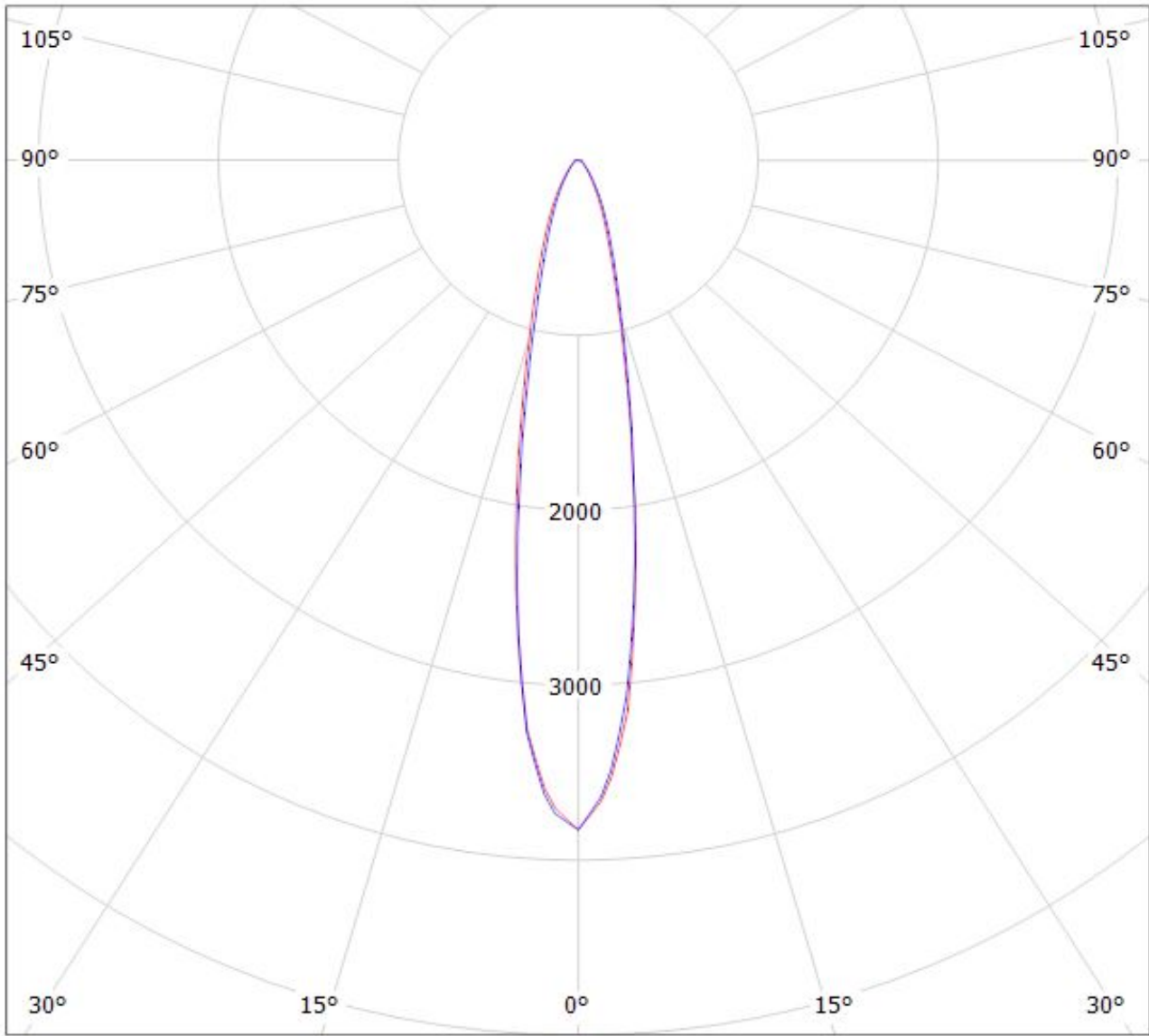


cd/klm

— C0 - C180 — C90 - C270

$\eta = 95\%$

Luminaire: LEDiL Oy C13869\_VANESSA-B-S\_(REBEL-ES) Eff.93.8%  
Lamps: 1 x LUXEON\_REBEL-ES\_12x1\_811.634@250mA\_P=9.06474W\_I=249.8mA



cd/klm

— C0 - C180    — C90 - C270

$\eta = 94\%$

**NOTE: The typical divergence will be changed by different color, chip size and chip position tolerance. The typical total divergence is the full angle measured where the luminous intensity is half of the peak value.**