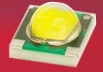


Data Sheet

LL30CR-PT60140L02



Xlamp XP-G



Similar Products(Illuminance Uniformity, Brightness Uniformity, Assymetry,Elevation needed)



LL01LU-UQ70140L02

■ Features & Typical Applications

- High efficiency
- Optimized for uniform effects
- Street Lights

■ Table of Contents

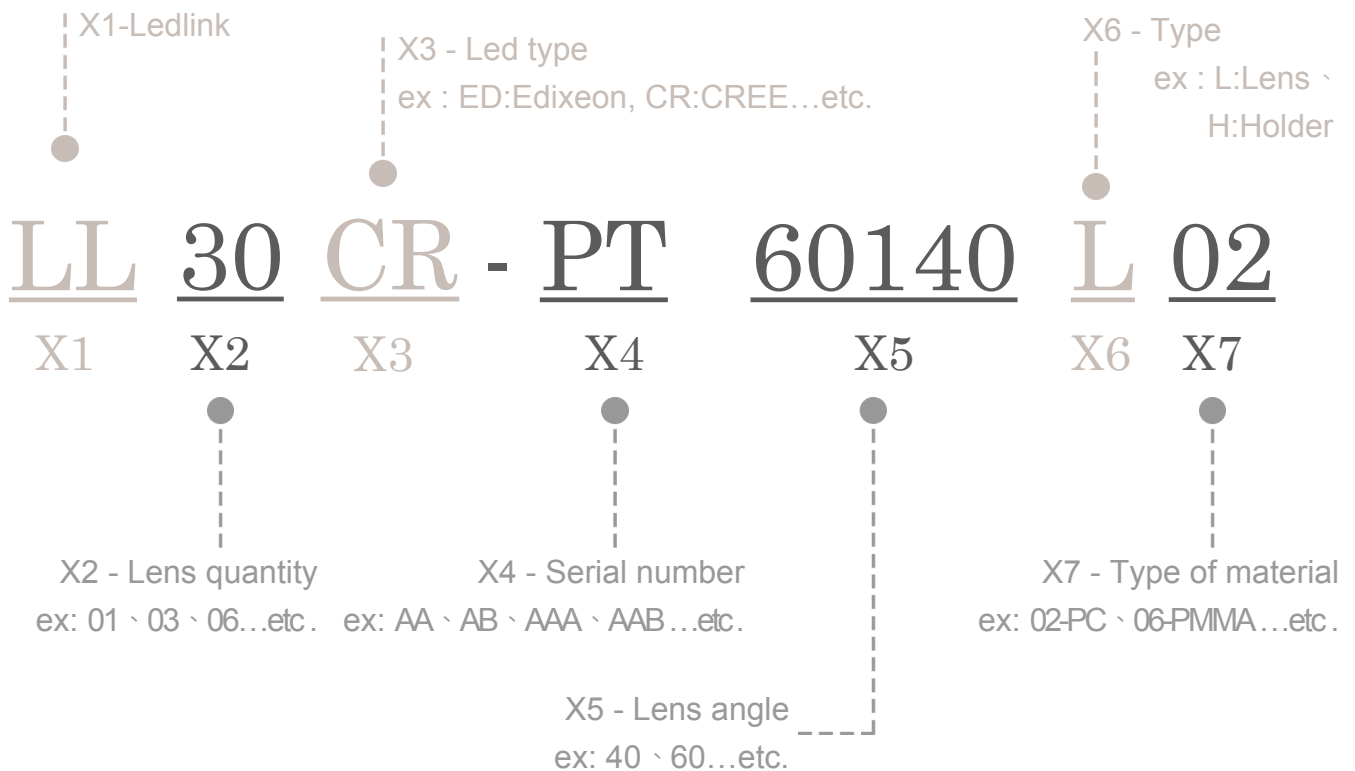
General Information & Product Nomenclature.....	P.2
Optical Specifications	P.3
Mechanical Specifications	P.4

LL30CR-PT60140L02

General Information

- Lens Material Optical Grade PC
- Operating Temperature range -40°C~+110°C(upper limit +120°C)
- Storage Temperature range -40°C~+110°C(upper limit +120°C)
 - * Average transmittance in visible spectrum 400nm~700nm>90%
- Usage and Maintenance:
 1. If necessary, clean lenses with mild soap, water and soft cloth.
 2. Never use any commercial cleaning solvents on lenses, like alcohol.
 3. Please handle or install lenses with wearing gloves, skin oils may damage lens or its optical characteristic.

Product Nomenclature



LL30CR-PT60140L02

Optical Specifications

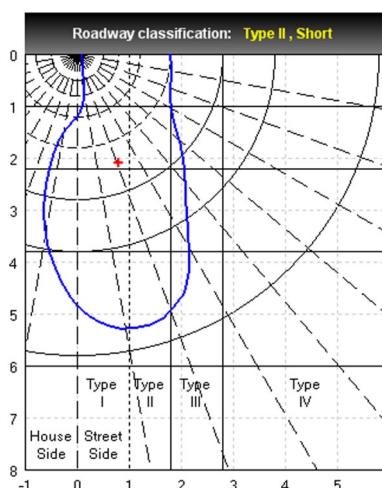
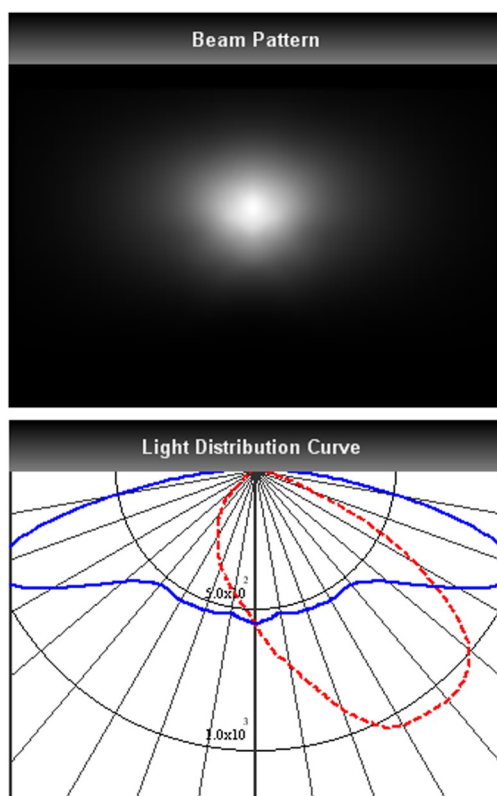


Xlamp XP-G

Note: (1) All the results of analysis are based on 15 degrees of elevation
(2) Tolerance: $\pm 10\%$

IES File: [Download](#)

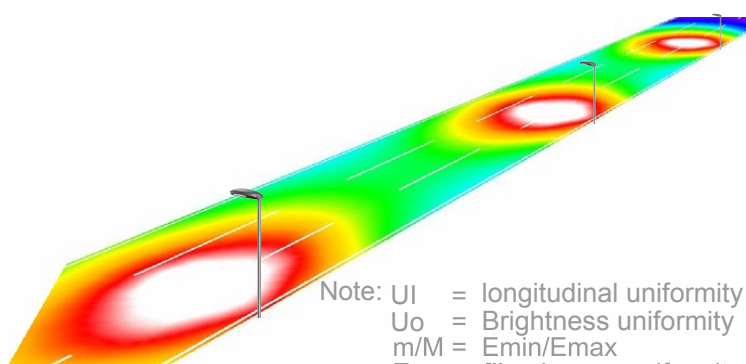
@elevation 15°



Elevation	Roadway Classification
0°	Type II, Short
5°	Type II, Short
10°	Type II, Short
15°	Type III, Short
20°	Type III, Medium

DIALux Simulation Result

Analyzed file: [Download](#)



Note: UI = longitudinal uniformity
Uo = Brightness uniformity
m/M = Emin/Emax
Eu0 = Illuminance uniformity
TI = Threshold increment
SR = Surround ratio

Recommend configuration condition

Height = 10m
Distance = 30m
Roadwidth = 10.5m
Elevation = 15degree
Overhang = 0m

Result

UI = 0.9
Uo = 0.5
m/M = 0.4
Eu0 = 0.6
TI = --
SR = 0.6

*The results would be similar if the configuration conditions are equally magnified or minified.

*This testing result is obtained through testing the popular rank LED samples which provided by the original manufacturer. Hence, the testing results would be varied as the users choose same LED model but different rank.

*The analyzed file require DIALux v4.10 and above to open.

LL30CR-PT60140L02

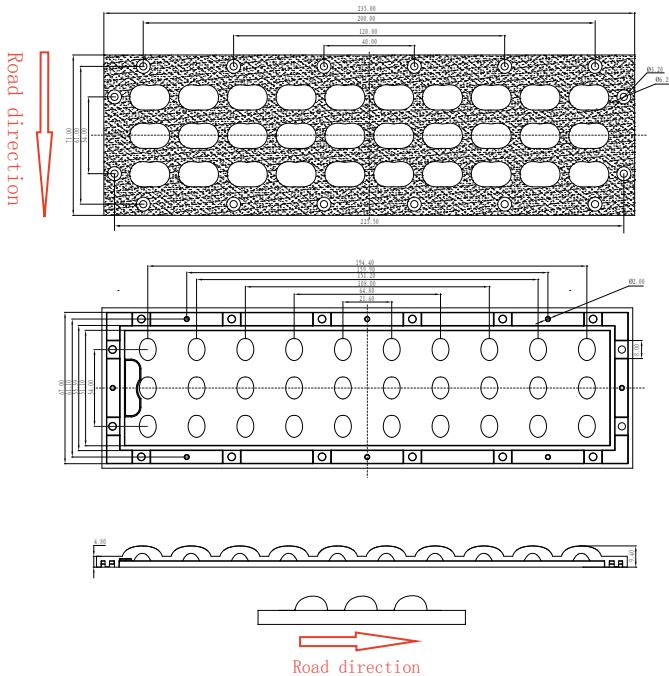
Mechanical Specification

1. Fixing method

- Glue Screw Tape Fixing-ring Frame

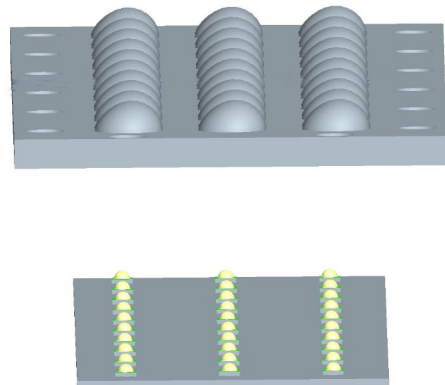
Note: (1) All dimensions are in mm.
 (2) All measurements are ± 0.15 mm unless otherwise indicated.

2. Lens dimensions

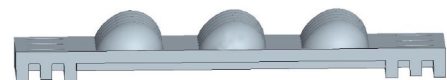


4. Lens assembly dimensions

3. Lens + Leds + MCPCB assembly instruction



5. View assembly lens with MCPCB:



Mouser Electronics

Authorized Distributor

Click to View Pricing, Inventory, Delivery & Lifecycle Information:

[LedLink Optics:](#)

[LL30CR-PT60140L02](#)