

Data Sheet

LL24NI-CROxxL06



5630



■ Features & Typical Applications

- High efficiency
- Available with 4 beam angles
- Optimized Uniformity
- Lens without Holder
- Indoor Lighting
- Commercial Lighting

■ Table of Contents

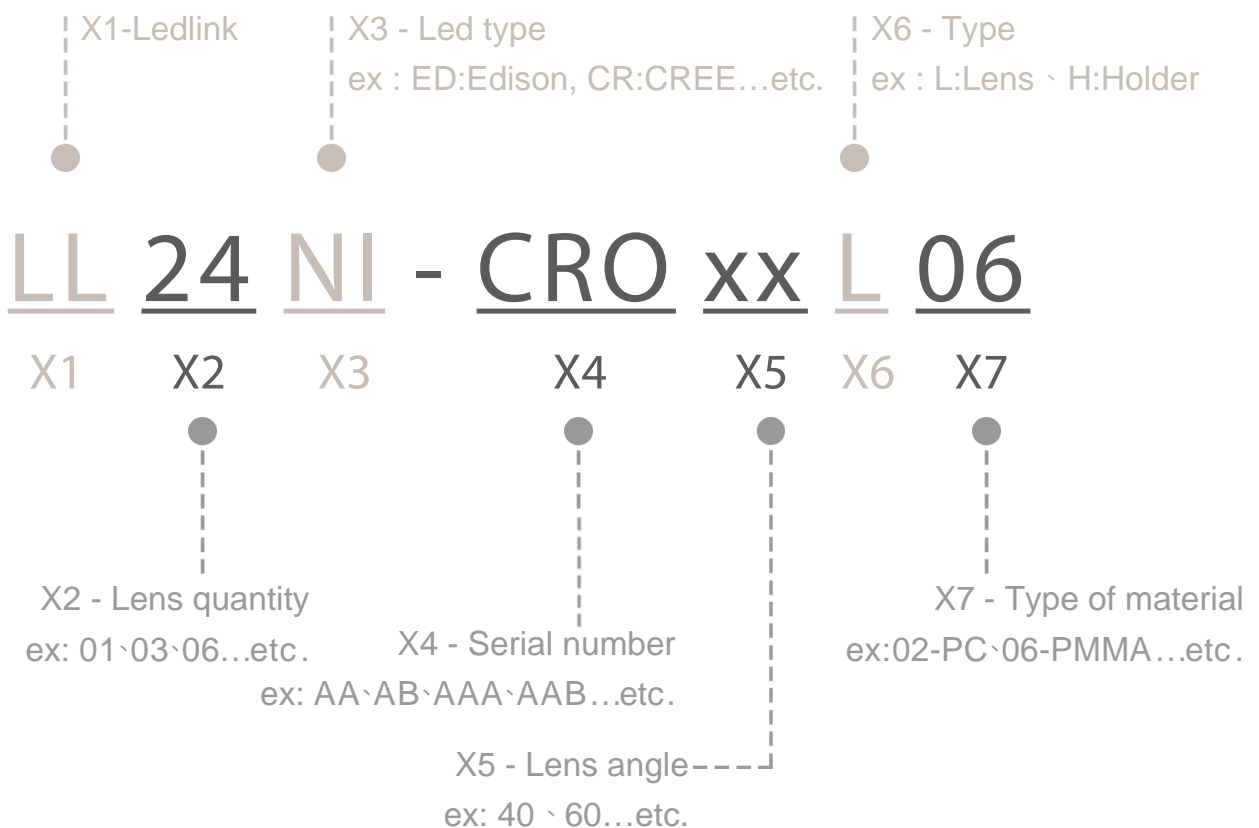
General Information & Product Nomenclature.....	P.2
Optical Specifications	P.3
Mechanical Specifications	P.5
Package Specifications.....	P.6

LL24NI-CROxxL06

General Information

- Lens Material : PMMA 8N
- Operating Temperature range -40°C~+70°C(upper limit +80°C).
- Storage Temperature range -40°C~+70°C(upper limit +80°C).
 - * Average transmittance in visible spectrum 400nm~700nm>90%.
(For raw material only)
- Usage and Maintenance:
 1. If necessary, clean lenses with mild soap, water and soft cloth.
 2. Never use any commercial cleaning solvents on lenses, like alcohol.
 3. Please handle or install lenses with wearing gloves, skin oils may damage lens or its optical characteristic.

Product Nomenclature

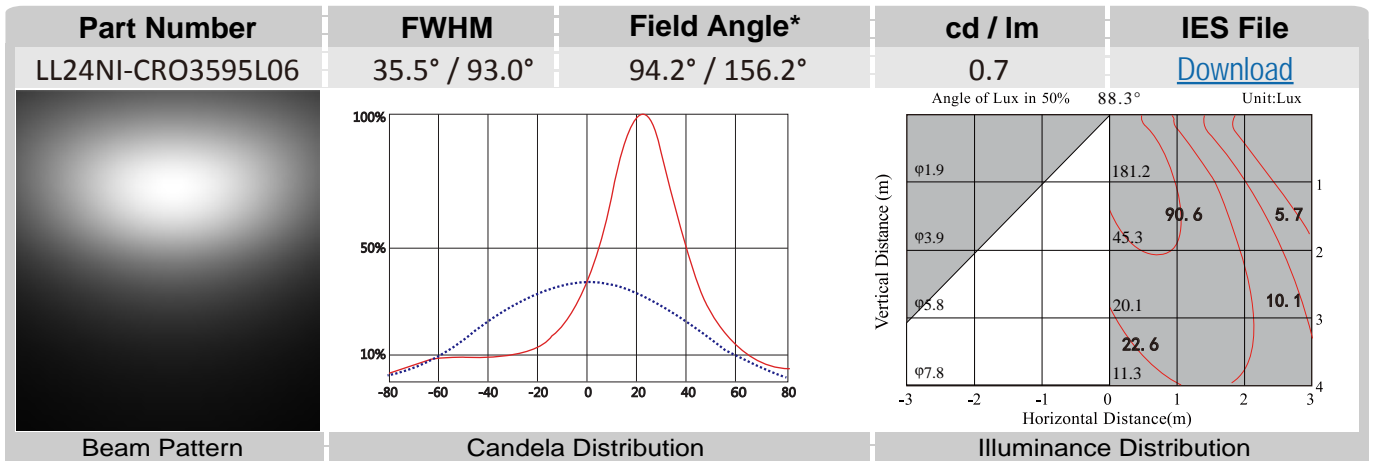
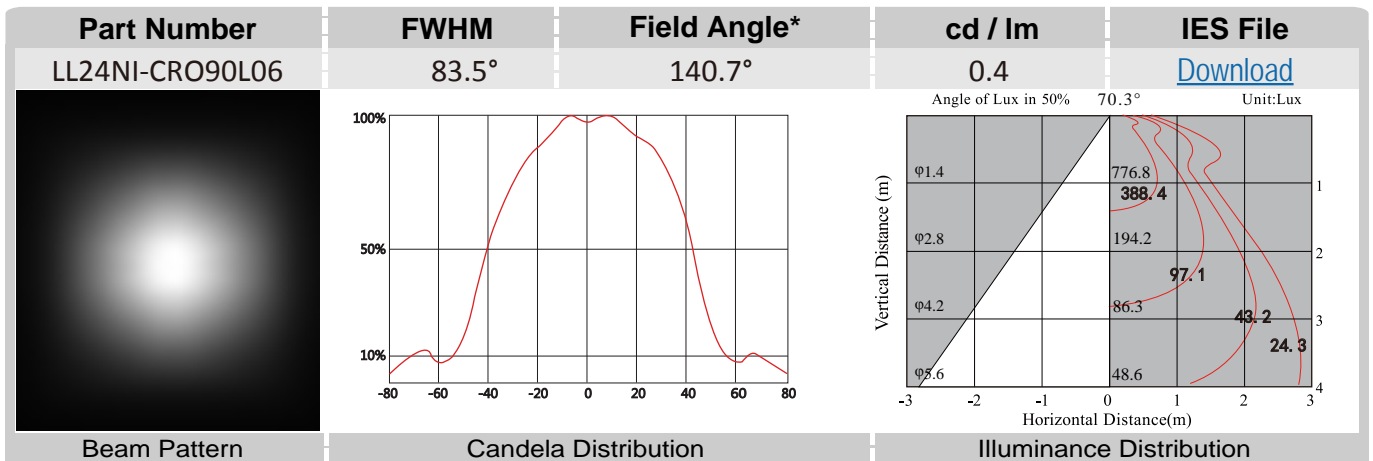
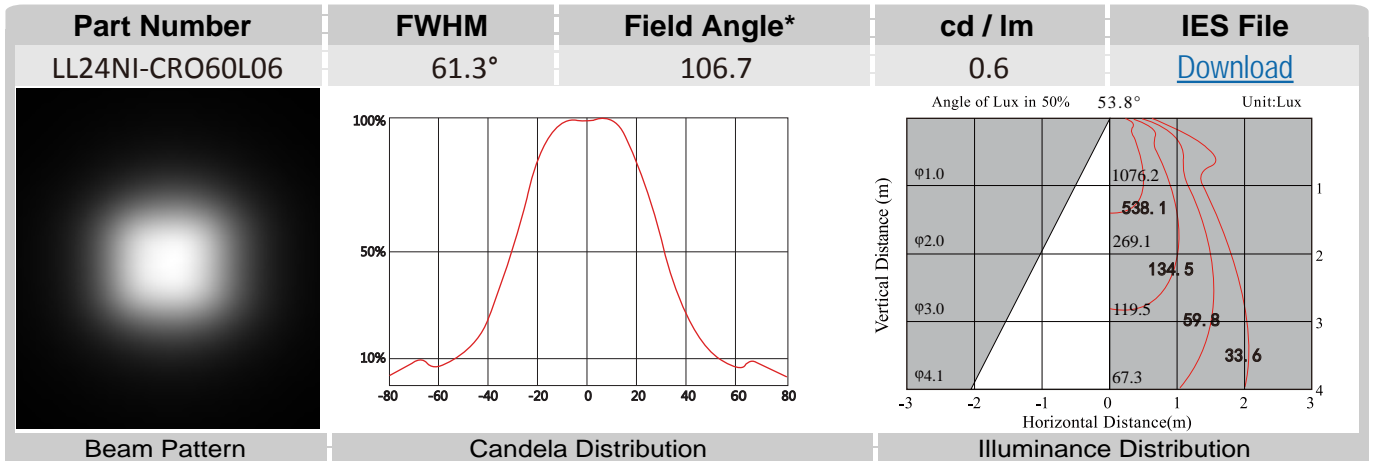


LL24NI-CROxxL06 Optical Specifications



5630

Note: (1) All the results of analysis are based on 0 degrees of elevation.
 (2) Tolerance: $\pm 10\%$.
 (3) Led Luminous Flux(lm): 1704($\pm 5\%$).



*The Field Angle is the angle between the two directions opposed to each other over the beam axis for which the luminous intensity is 10% that of the maximum luminous intensity.
 *This testing result is obtained through testing the popular rank LED samples which provided by the original manufacturer. Hence, the testing results would be varied as the users choose same LED model but different rank.

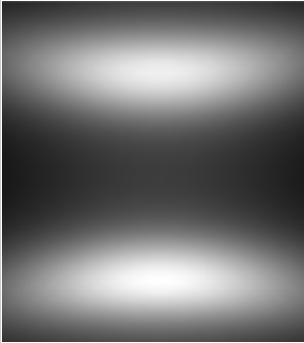
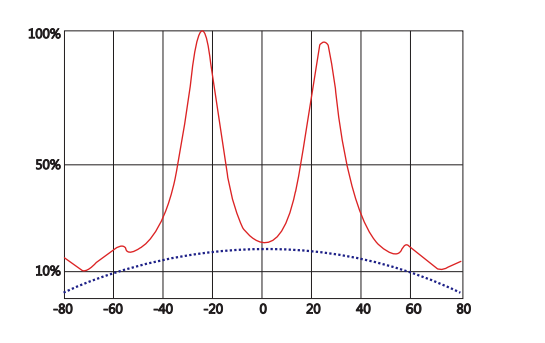
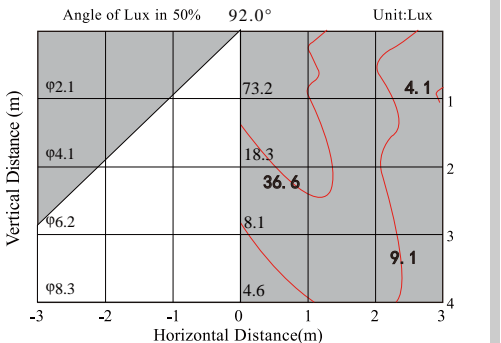
LL24NI-CROxxL06 Optical Specifications



5630

Note: (1) All the results of analysis are based on 0 degrees of elevation.
 (2) Tolerance: $\pm 10\%$.
 (3) Led Luminous Flux(lm): 1704($\pm 5\%$).

Part Number	FWHM	Field Angle*	cd / lm	IES File
LL24NI-CRO70125L06	68.1° / 127.4°	181.9° / 171.3°	0.5	Download

 <p>Beam Pattern</p>	 <p>Candela Distribution</p>	<p>Angle of Lux in 50% 92.0° Unit:Lux</p>  <p>Illuminance Distribution</p>
-------------------------------------------------------------------------------------------------------	---------------------------------------------------------------------------------------------------------------	--------------------------------------------------------------------------------------------------------------------------------------------------------------

*The Field Angle is the angle between the two directions opposed to each other over the beam axis for which the luminous intensity is 10% that of the maximum luminous intensity.
 *This testing result is obtained through testing the popular rank LED samples which provided by the original manufacturer. Hence, the testing results would be varied as the users choose same LED model but different rank.

LL24NI-CROxxL06 Mechanical Specification

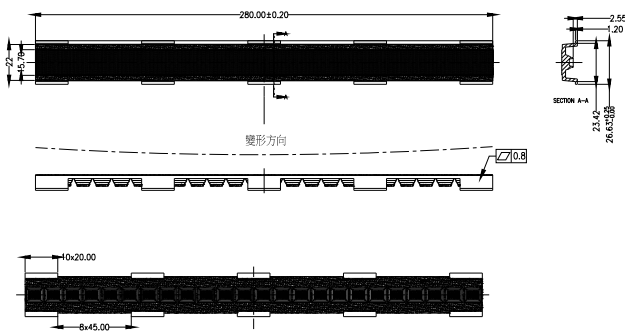
1. Fixing method

Glue
 Screw
 Tape
 Fixing-ring
 Frame

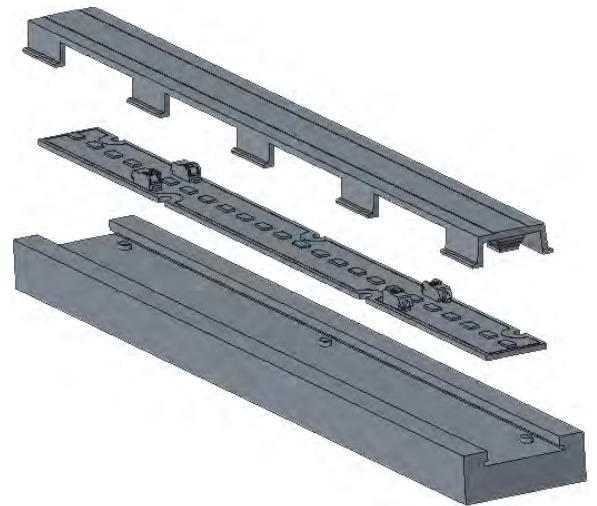
Note: (1) All dimensions are in mm.

2. Lens dimension

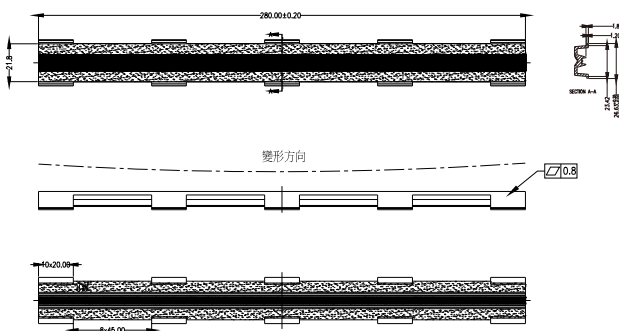
LL24NI-CROxx(60/90)L06



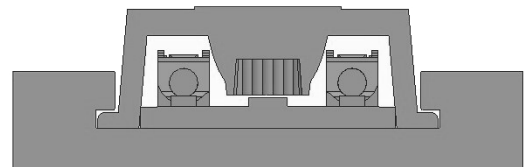
3. Lens + Leds assembly instruction



LL24NI-CROxx(3595/70125)L06

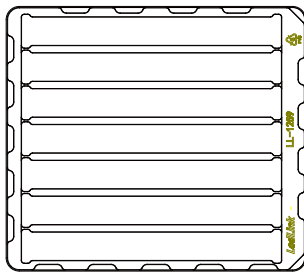


4. View assembly lens with LED:



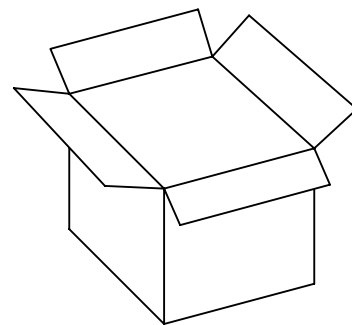
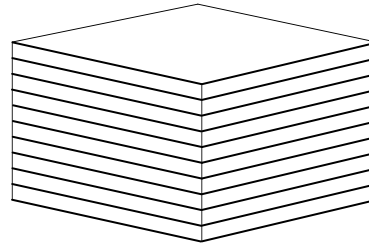
LL24NI-CROxL06 Package Specifications

Item	Quantity	Total	Size(L*W*H)	G.W
plastic box	7 pcs/plastic box	7 pcs	33.5*29.6*1.9 cm	27g
outer box	16 plastic box/outer box	112 pcs	35*31*21 cm	



LL-1259

7 pcs/plastic box



112 pcs/outer box



Note: