

Data Sheet

LL24CR-AU75135L02



Similar Products(Illuminance Uniformity, Assymetry, Elevation needed)



LL01CR-AU85135L02



LL01CR-PB70140L02



LL20CR-VK60140L02

■ Features & Typical Applications

- High efficiency
- Optimized for uniform effect
- Roadway Lighting

■ Table of Contents

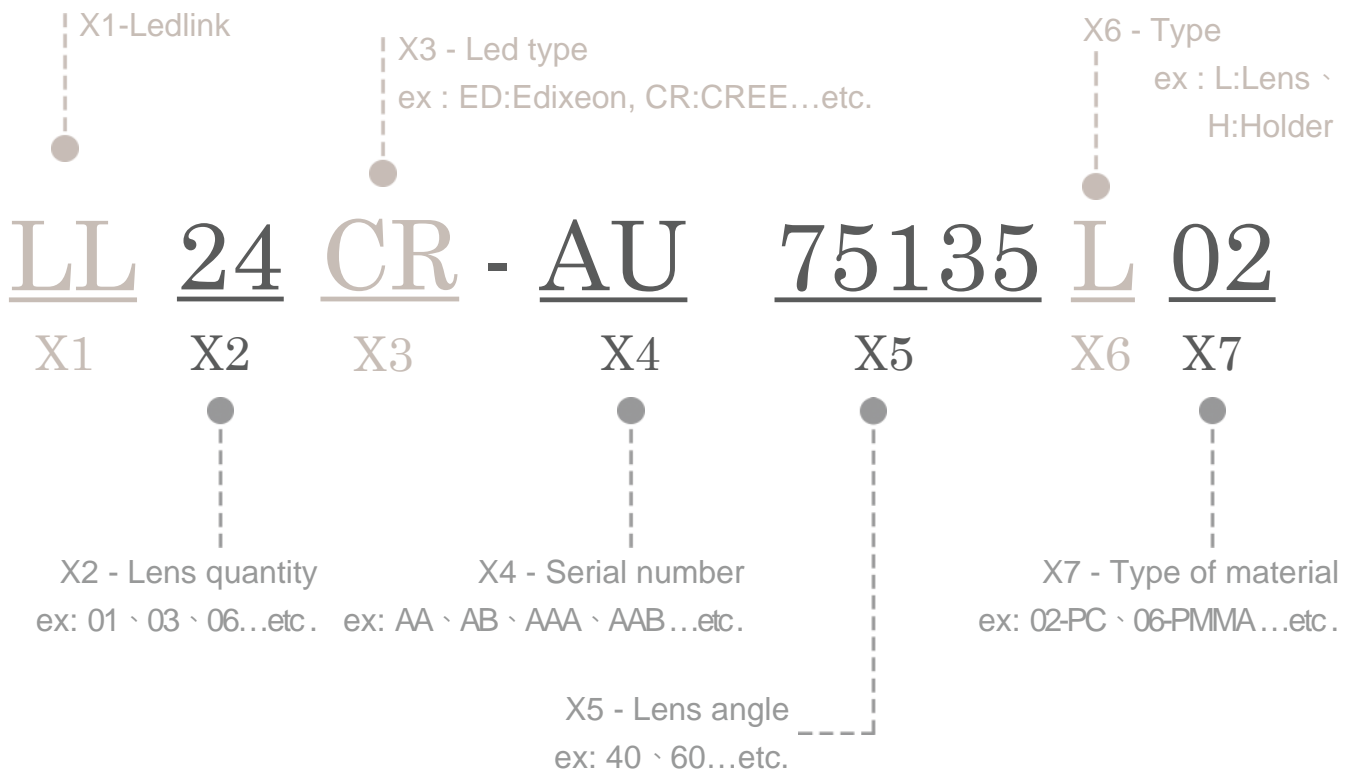
General Information & Product Nomenclature.....	P.2
Optical Specifications	P.3
Mechanical Specifications	P.4
Package Specifications	P.5

LL24CR-AU75135L02

General Information

- Lens Material Optical Grade PC
- Operating Temperature range -40°C~+110°C(upper limit +120°C)
- Storage Temperature range -40°C~+110°C(upper limit +120°C)
 - * Average transmittance in visible spectrum 400nm~700nm>90%
- Usage and Maintenance:
 1. If necessary, clean lenses with mild soap, water and soft cloth.
 2. Never use any commercial cleaning solvents on lenses, like alcohol.
 3. Please handle or install lenses with wearing gloves, skin oils may damage lens or its optical characteristic.

Product Nomenclature



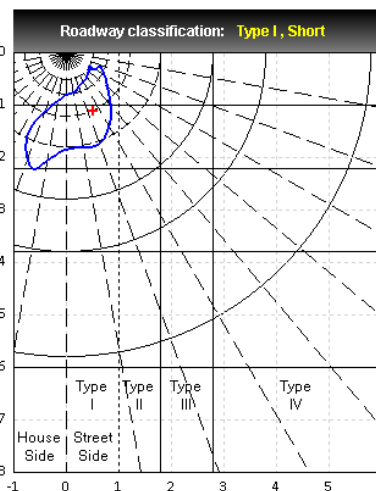
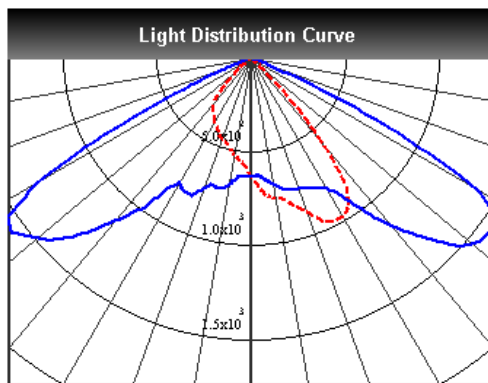
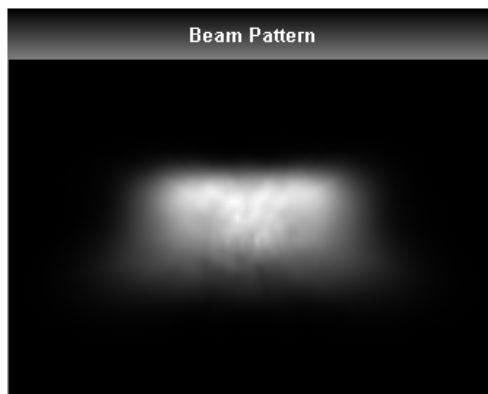
LL24CR-AU75135L02 Optical Specifications



Note: (1) All the results of analysis are based on 15 degrees of elevation.
 (2) Tolerance: $\pm 10\%$.
 (3) Led Luminous Flux(lm): 3168($\pm 5\%$).

IES File: [Download](#)

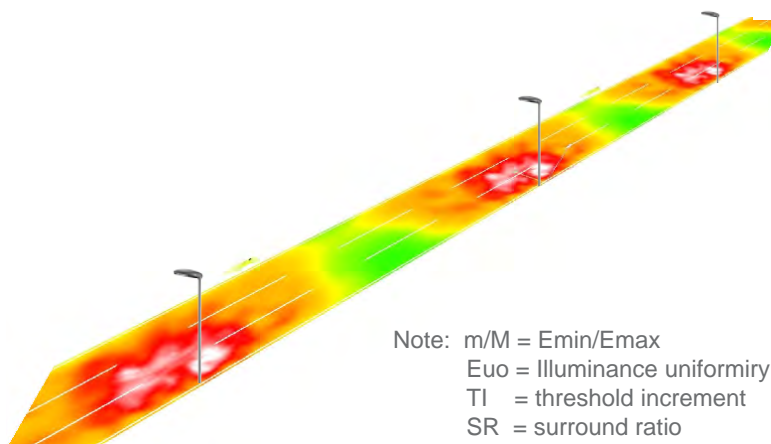
@elevation 15°



Elevation	Roadway Classification
0°	Type I, Short
5°	Type II, Short
10°	Type II, Short
15°	Type II, Short
20°	Type III, Short

DIALux Simulation Result

Analyzed file: [Download](#)



Recommend configuration condition

Height	=	10m
Distance	=	35m
Roadwidth	=	10.5m
Elevation	=	15degree
Overhang	=	1m

Result

m/M	=	0.5
E_{uo}	=	0.7
TI	=	2%
SR	=	0.6

*The results would be similar if the configuration conditions are equally magnified or minified.

*This testing result is obtained through testing the popular rank LED samples which provided by the original manufacturer. Hence, the testing results would be varied as the users choose same LED model but different rank.

*The analyzed file require DIALux v4.12 and above to open.

LL24CR-AU75135L02

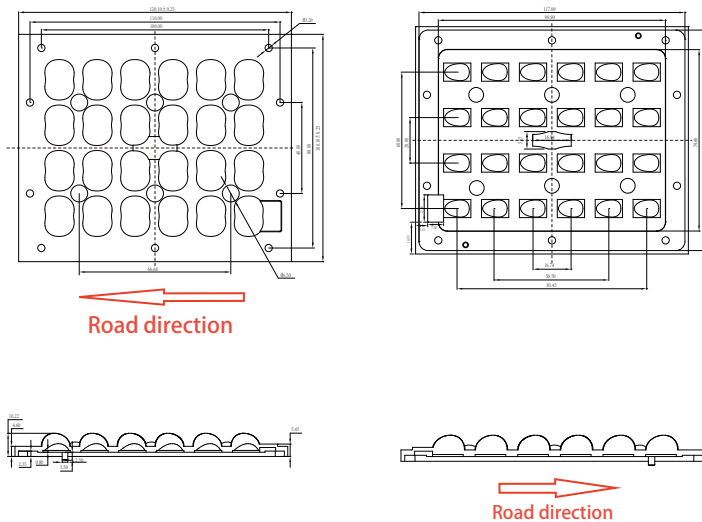
Mechanical Specification

1. Fixing method

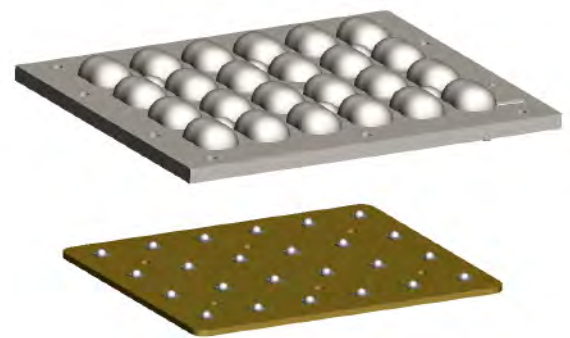
Glue
 Screw
 Tape
 Fixing-ring
 Frame

Note: (1) All dimensions are in mm.
 (2) All measurements are ± 0.15 mm unless otherwise indicated.

2. Lens dimensions



3. Lens + Leds + MCPCB assembly instruction



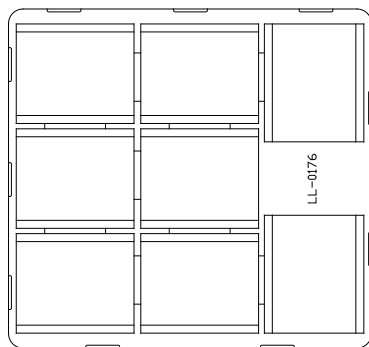
4. Lens assembly dimensions

5. View assembly lens with MCPCB:

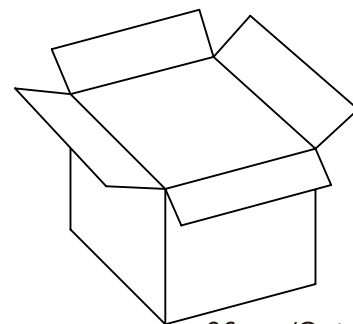
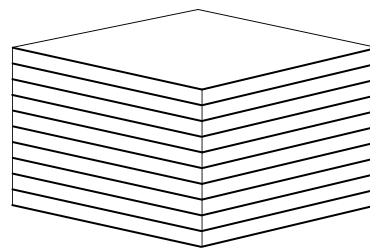


LL24CR-AU75135L02 Package Specifications

Item	Quantity	Total	Size(L*W*H)	G.W
Plastic box	8 pcs/plastic box	8 pcs	37.6*35.1*1.6 cm	55.6g
Outer box	12 plastic box/Outer box	96 pcs	40*37*21 cm	



8 pcs/plastic box



96 pcs/Outer box



Note: