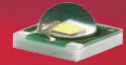
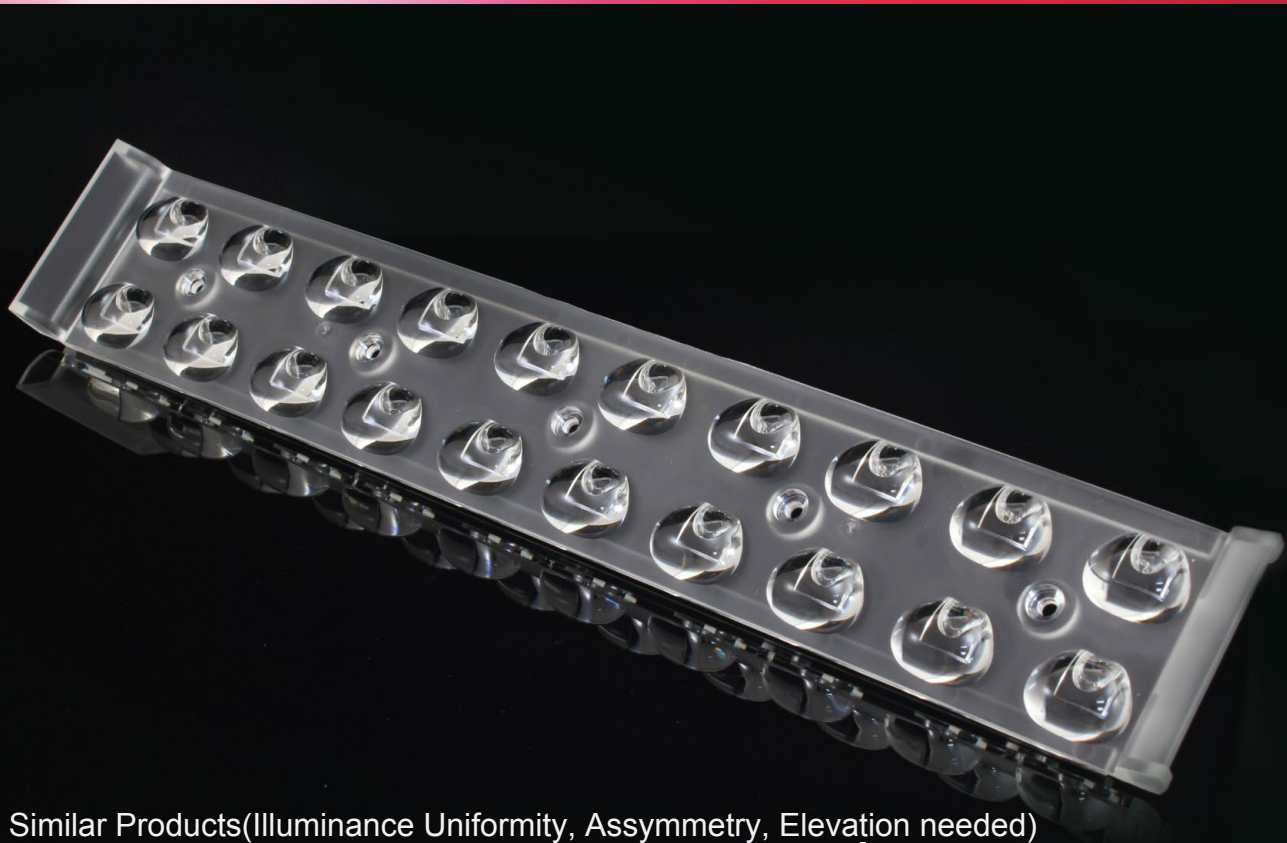


# Data Sheet

## LL20CR-VK60140L02



Xlamp XP-E



Similar Products(Illuminance Uniformity, Assymetry, Elevation needed)



LL24CR-AU75135L02



LL01CR-PB70140L02



LL01CR-AU85135L02

### ■ Features & Typical Applications

- High efficiency
- Optimized for uniform effects
- Street Lights

### ■ Table of Contents

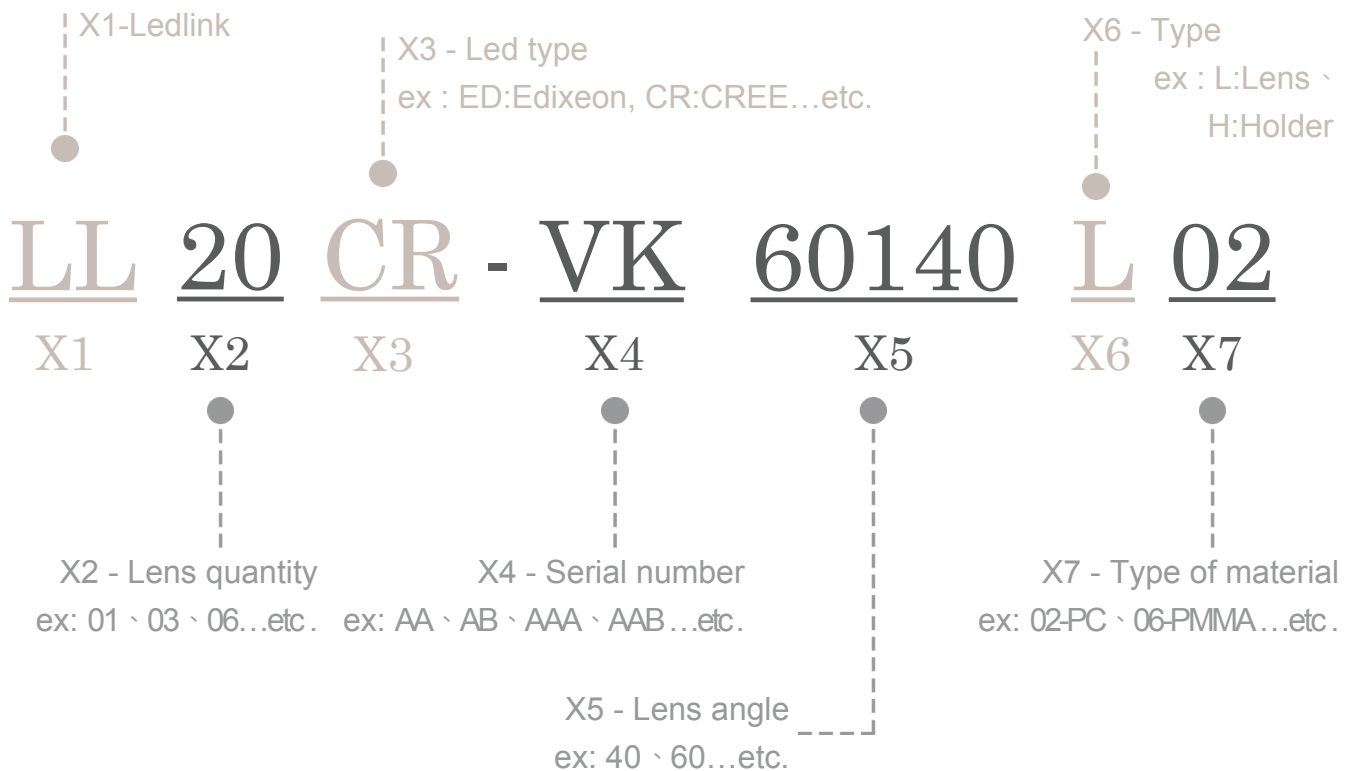
General Information & Product Nomenclature.....	P.2
Optical Specifications .....	P.3
Mechanical Specifications .....	P.4
Package Specifications .....	P.5

# LL20CR-VK60140L02

## General Information

- Lens Material Optical Grade PC
- Operating Temperature range -40°C~+110°C(upper limit +120°C)
- Storage Temperature range -40°C~+110°C(upper limit +120°C)
  - \* Average transmittance in visible spectrum 400nm~700nm>90%
- Usage and Maintenance:
  1. If necessary, clean lenses with mild soap, water and soft cloth.
  2. Never use any commercial cleaning solvents on lenses, like alcohol.
  3. Please handle or install lenses with wearing gloves, skin oils may damage lens or its optical characteristic.

## Product Nomenclature



# LL20CR-VK60140L02

## Optical Specifications

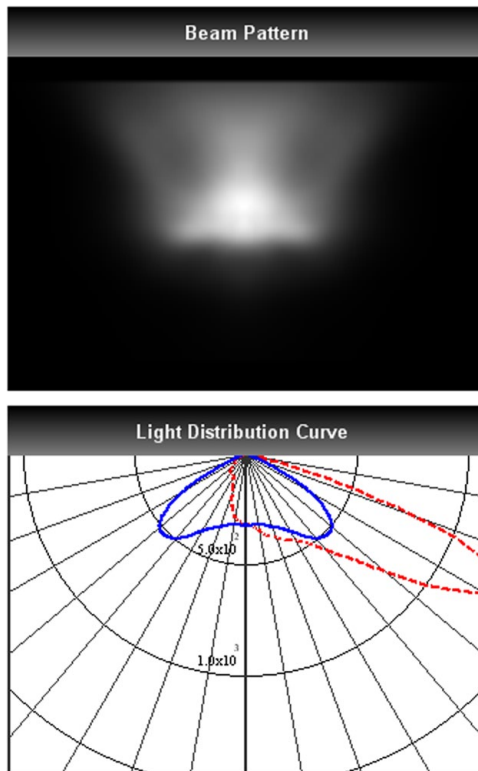


**Xlamp XP-E**

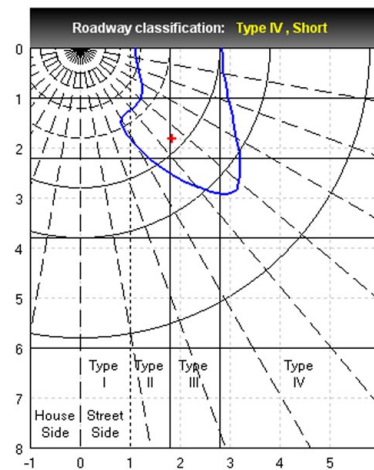
Note: (1) All the results of analysis are based on 10 degrees of elevation.  
 (2) Tolerance:  $\pm 10\%$ .  
 (3) Led Luminous Flux(I<sub>m</sub>): 100( $\pm 5\%$ ).

IES File: [Download](#)

@elevation 10°



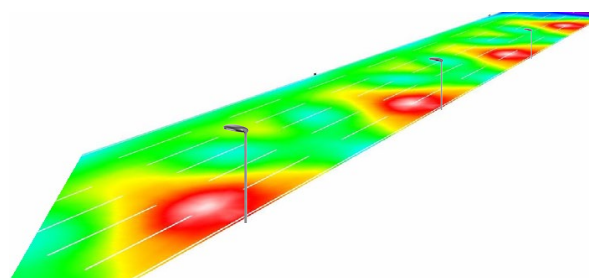
---C0:0-180 ---C1:90-270



Elevation	Roadway Classification
0°	Type III , Short
5°	Type III , Short
10°	Type IV , Short
15°	Type IV , Short
20°	Type IV , Medium

### DIALux Simulation Result

Analyzed file: [Download](#)



Note: m/M = E<sub>min</sub>/E<sub>max</sub>  
 E<sub>uo</sub> = Illuminance uniformity  
 TI = threshold increment  
 SR = surround ratio

#### Recommend configuration condition

Height	=	10m
Distance	=	30m
Roadwidth	=	21m
Elevation	=	10degree
Overhang	=	1m

#### Result

m/M	=	0.4
E <sub>uo</sub>	=	0.7
TI	=	4%
SR	=	0.6

\*The results would be similar if the configuration conditions are equally magnified or minified.

\*This testing result is obtained through testing the popular rank LED samples which provided by the original manufacturer.  
 Hence, the testing results would be varied as the users choose same LED model but different rank.  
 \*The analyzed file require DIALux v4.10 and above to open.

# LL20CR-VK60140L02

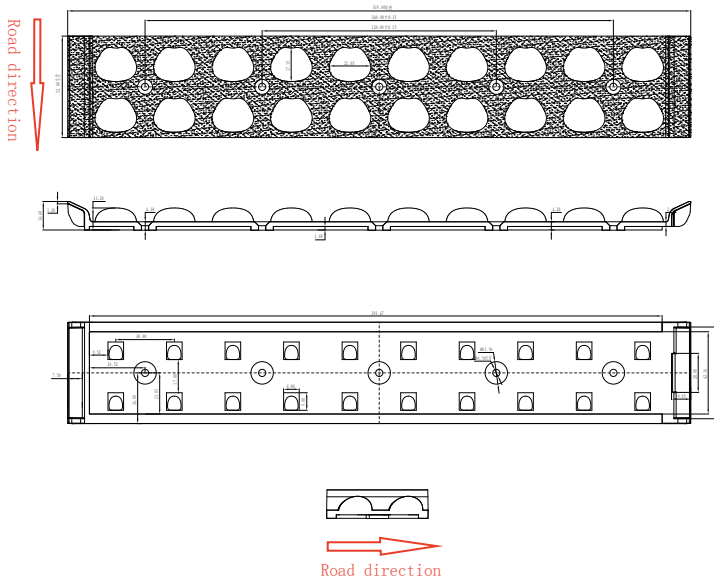
## Mechanical Specification

### 1. Fixing method

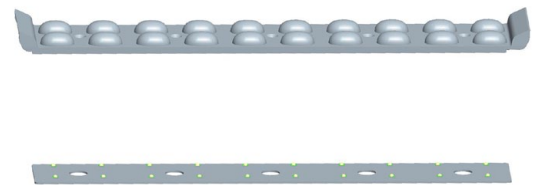
Glue       Screw       Tape       Fixing-ring       Frame

Note: (1) All dimensions are in mm.  
(2) All measurements are  $\pm 0.15$  mm unless otherwise indicated.

### 2. Lens dimensions

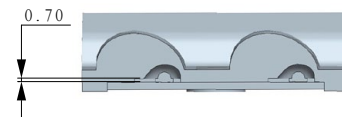


### 3. Lens + Leds + MCPCB assembly instruction



### 4. Lens assembly dimensions

### 5. View assembly lens with MCPCB:



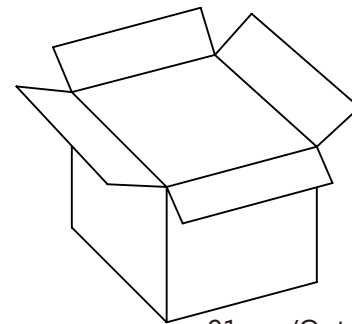
# LL20CR-VK60140L02

## Package Specifications

Item	Quantity	Total	Size(L*W*H)	G.W
Inner box		7 pcs	38*36*1.5cm	90g
Outer box	91 pcs/box	91 pcs	40*37*21 cm	
Outer box				



7 pcs/Inner Bag



91 pcs/Outer box



**Note:**