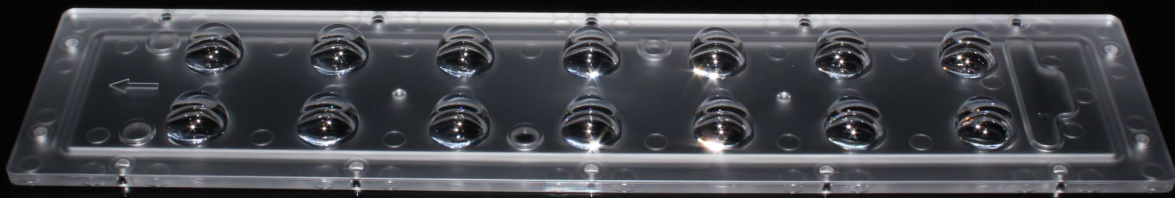


Data Sheet

LL14LU-ALY90130L19

PHILIPS
LUMILEDS REBEL ES

Similar Products(Illuminance Uniformity, Brightness Uniformity, Assymetry,Elevation needed)



LL01LU-UQ70140L02



LL30CR-PT60140L02



LL14CR-AOC65150L02

Features & Typical Applications

- High efficiency
- Optimized for uniform effect
- Roadway Lighting
- Anti-glare

Table of Contents

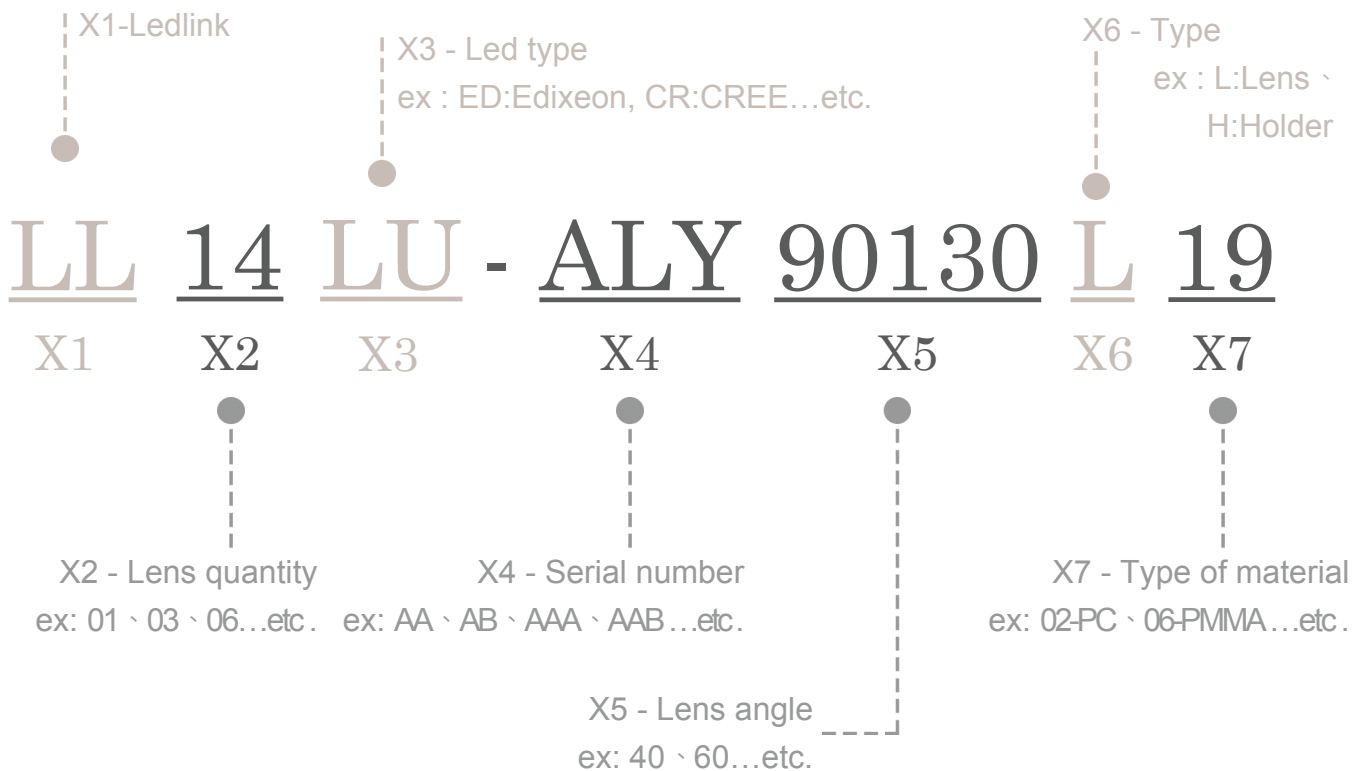
General Information & Product Nomenclature.....	P.2
Optical Specifications	P.3
Mechanical Specifications	P.4
Package Specifications	P.5

LL14LU-ALY90130L19

General Information

- Lens Material Optical Grade PC
- Operating Temperature range -40°C~+110°C(upper limit +120°C)
- Storage Temperature range -40°C~+110°C(upper limit +120°C)
 - * Average transmittance in visible spectrum 400nm~700nm>90%
- Usage and Maintenance:
 1. If necessary, clean lenses with mild soap, water and soft cloth.
 2. Never use any commercial cleaning solvents on lenses, like alcohol.
 3. Please handle or install lenses with wearing gloves, skin oils may damage lens or its optical characteristic.

Product Nomenclature



LL14LU-ALY90130L19

Optical Specifications

PHILIPS
LUMILEDS

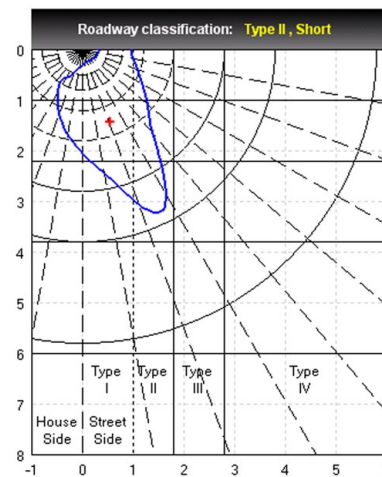
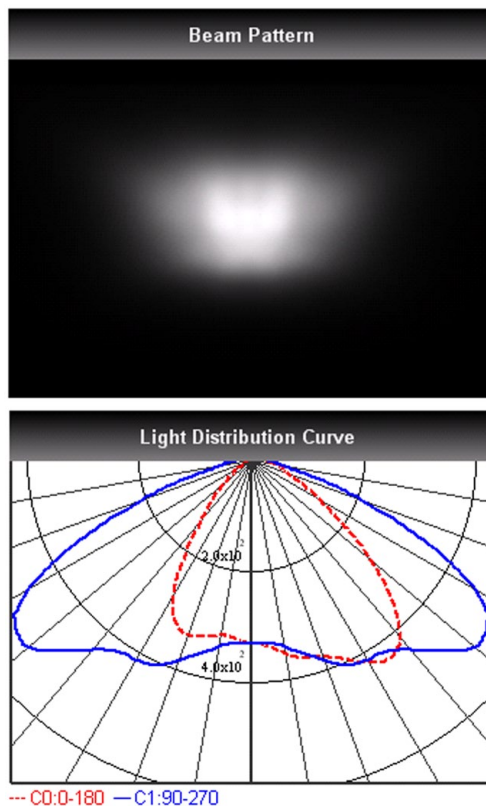


REBEL ES

Note: (1) All the results of analysis are based on 15 degrees of elevation.
(2) Tolerance: $\pm 10\%$.
(3) Led Luminous Flux(lm): 117($\pm 5\%$).

IES File: [Download](#)

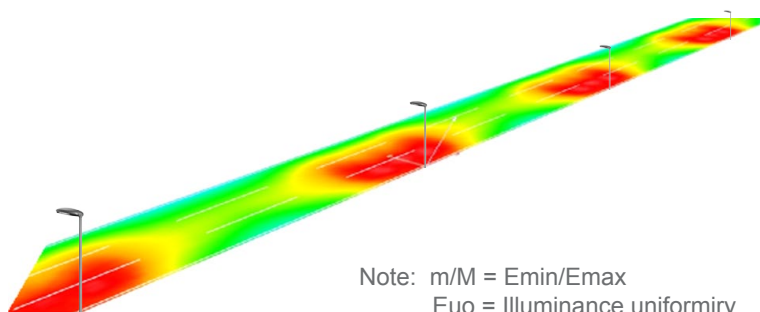
@elevation 15°



Elevation	Roadway Classification
0°	Type I, Short
5°	Type II, Short
10°	Type II, Short
15°	Type II, Short
20°	Type III, Short

DIALux Simulation Result

Analyzed file: [Download](#)



Note: m/M = Emin/Emax
Euo = Illuminance uniformity
UI = Longitudinal Uniformity
Uo = Brightness Uniformity
TI = threshold increment
SR = surround ratio

Recommend configuration condition	
Height	= 10m
Distance	= 30m
Roadwidth	= 10.5m
Elevation	= 15degree
Overhang	= 1m
Result	
m/M	= 0.5
Euo	= 0.6
UI	= 0.6
Uo	= 0.4
TI	= 8%
SR	= 0.6

*The results would be similar if the configuration conditions are equally magnified or minified.

*This testing result is obtained through testing the popular rank LED samples which provided by the original manufacturer. Hence, the testing results would be varied as the users choose same LED model but different rank.

*The analyzed file require DIALux v4.10 and above to open.

LL14LU-ALY90130L19

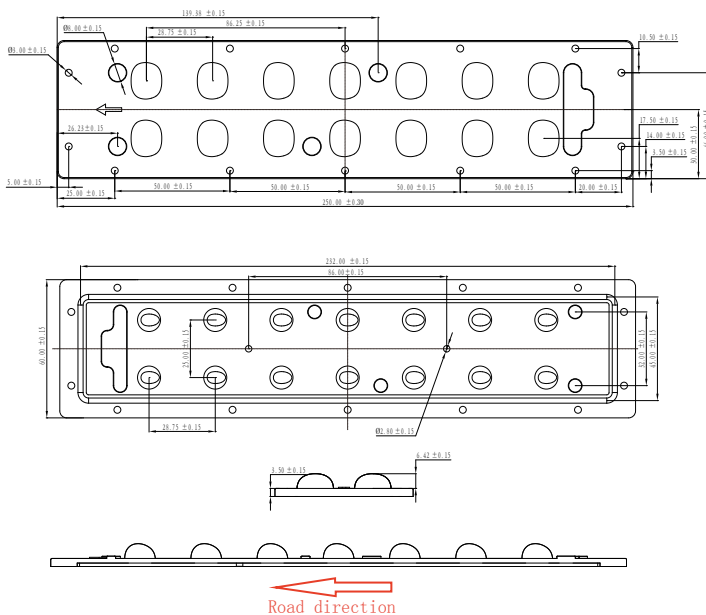
Mechanical Specification

1. Fixing method

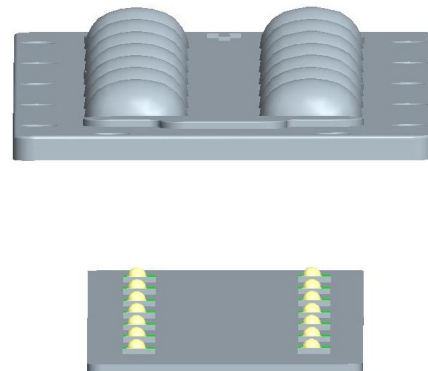
- Glue
 Screw
 Tape
 Fixing-ring
 Frame

Note: (1) All dimensions are in mm.
 (2) All measurements are ± 0.15 mm unless otherwise indicated.

2. Lens dimensions



3. Lens + Leds + MCPCB assembly instruction



4. Lens assembly dimensions

5. View assembly lens with MCPCB:



LL14LU-ALY90130L19

Package Specifications

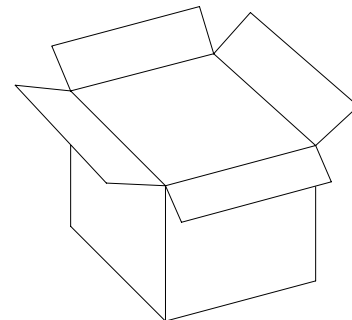
Item	Quantity	Total	Size(L*W*H)	G.W
Inner bag	1pcs/plastic bag	1 pcs	10*4 cm	52.3g
Outer bag	6 plastic bag/Outer bag	6 pcs	36*38 cm	
Outer box	16 Outer bag/Outer box	96 pcs	40*37*21 cm	



1pcs/Plastic bag



6 pcs/Outer bag



96 pcs/Outer box



Note: