

Data Sheet

LL12ZZ-CRC150L19



■ Features & Typical Applications

- High efficiency
- Roadway Lighting
- Optimized Uniformity
- Anti-glare

■ Table of Contents

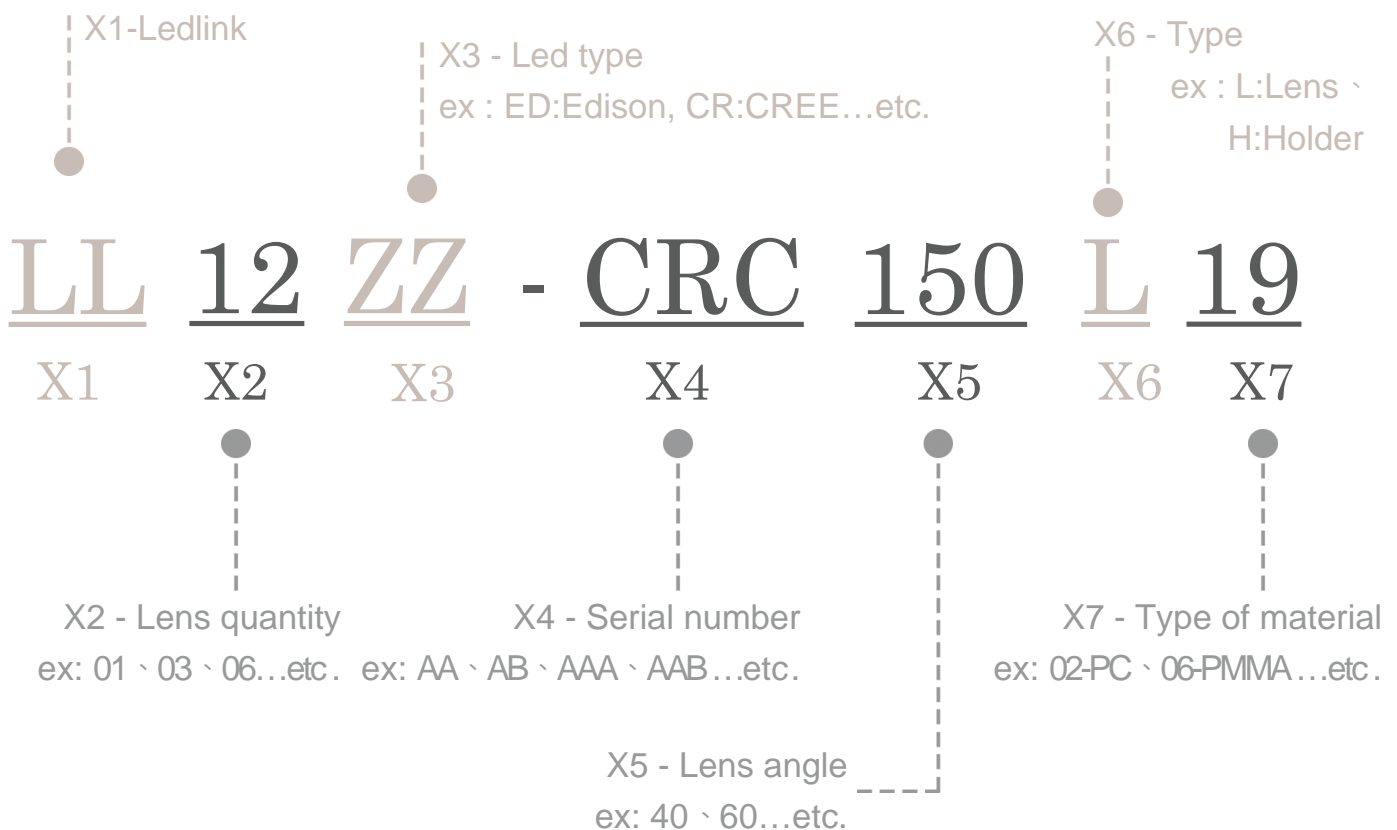
General Information & Product Nomenclature.....	P.2
Optical Specifications	P.3
Mechanical Specifications	P.4
Package Specifications	P.5

LL12ZZ-CRC150L19

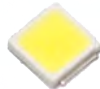
General Information

- Lens Material :PC 1250Z
- Operating Temperature range -40°C~+110°C(upper limit +120°C).
- Storage Temperature range -40°C~+110°C(upper limit +120°C).
 - * Average transmittance in visible spectrum 400nm~700nm>90%.
- Usage and Maintenance:
 1. If necessary, clean lenses with mild soap, water and soft cloth.
 2. Never use any commercial cleaning solvents on lenses, like alcohol.
 3. Please handle or install lenses with wearing gloves, skin oils may damage lens or its optical characteristic.

Product Nomenclature

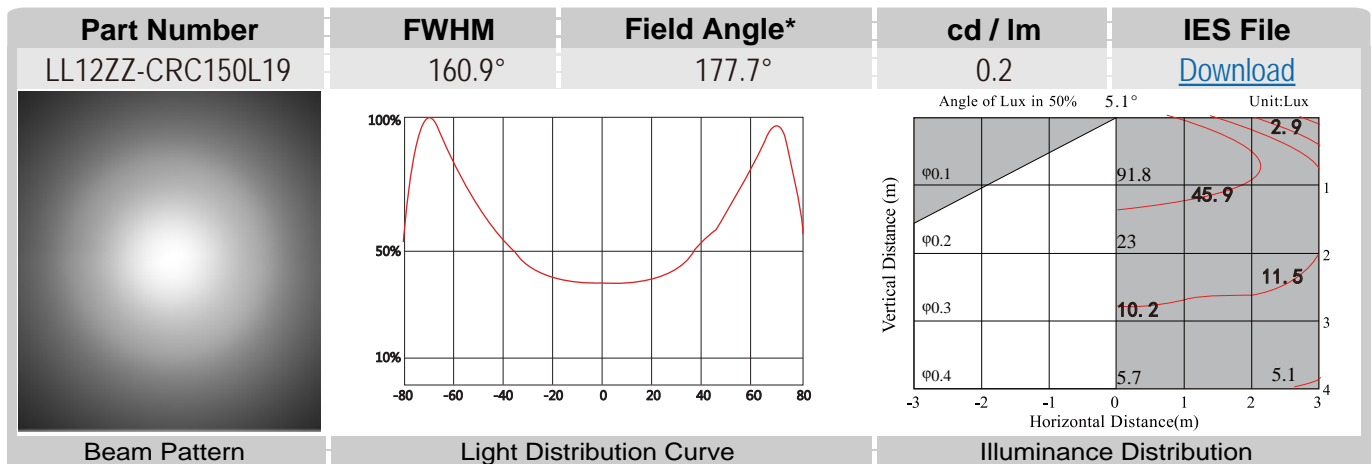


LL12ZZ-CRC150L19 Optical Specifications

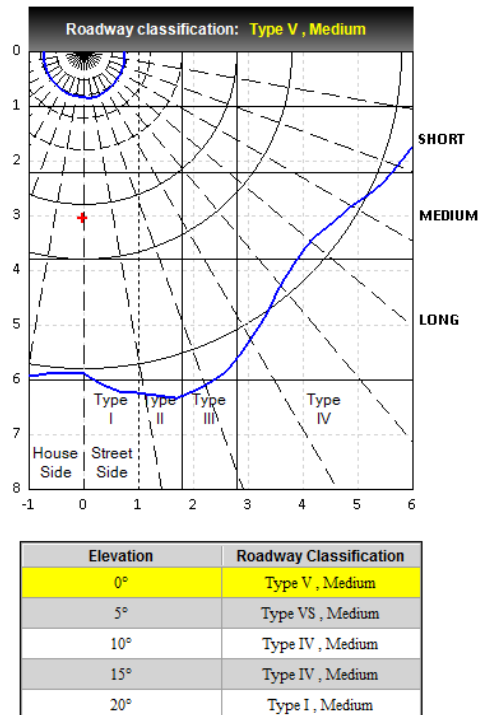
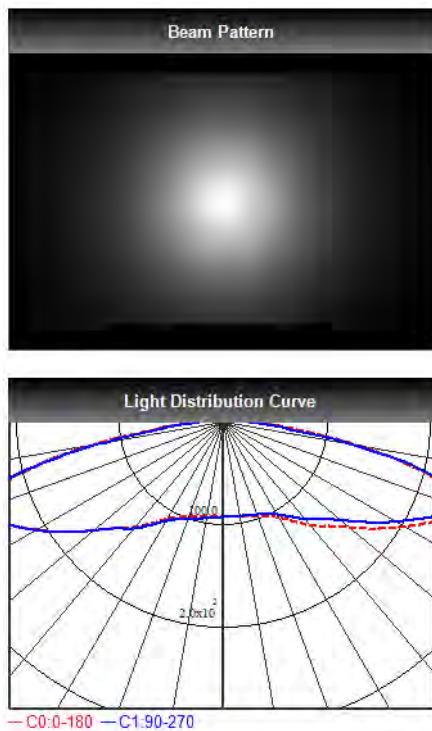


3030

Note: (1) All the results of analysis are based on 0 degrees of elevation.
 (2) Tolerance: $\pm 10\%$.
 (3) Led Luminous Flux(lm): 1102($\pm 5\%$).



@elevation 0°



LL12ZZ-CRC150L19

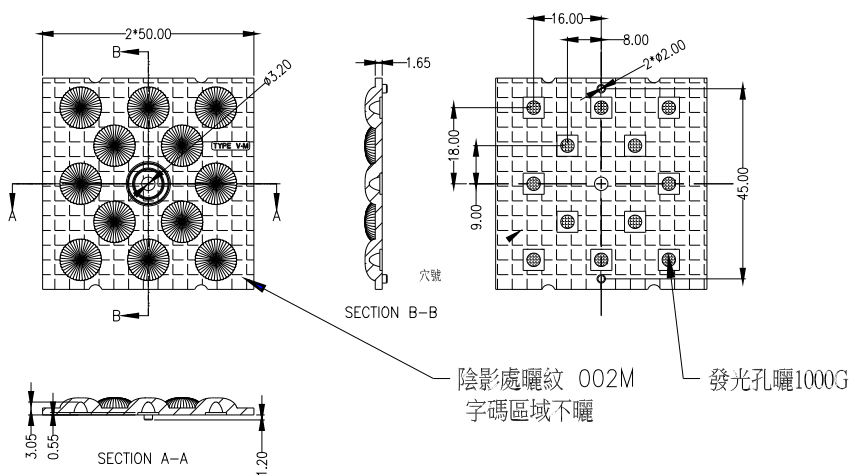
Mechanical Specification

1. Fixing method

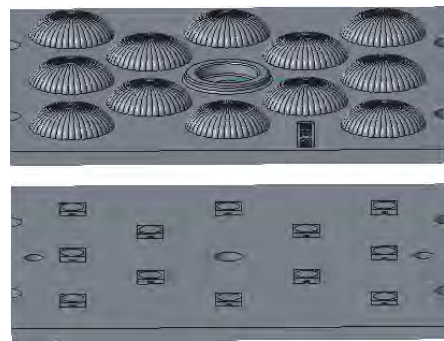
- Glue
- Screw
- Tape
- Fixing-ring
- Frame

Note: (1) All dimensions are in mm.
 (2) All measurements are ± 0.15 mm unless otherwise indicated.

2. Lens dimension



3. Assembly instruction



4. Assembly dimension

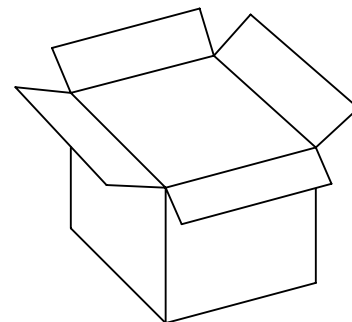
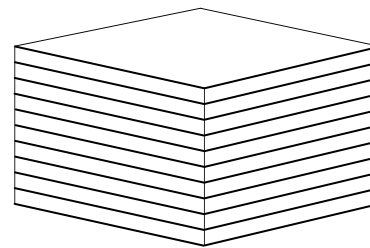
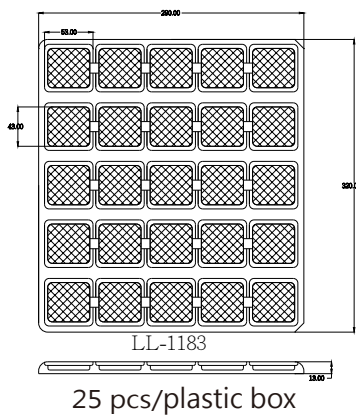
5. View assembly lens with MCPCB:



LL12ZZ-CRC150L19

Package Specifications

Item	Quantity	Total	Size(L*W*H)	G.W
plastic box	25 pcs/plastic box	25 pcs	32*29*1.3 cm	6.4g
outer box	21 plastic box/outer box	525 pcs	35*31*21 cm	



525 pcs/outer box



Note: