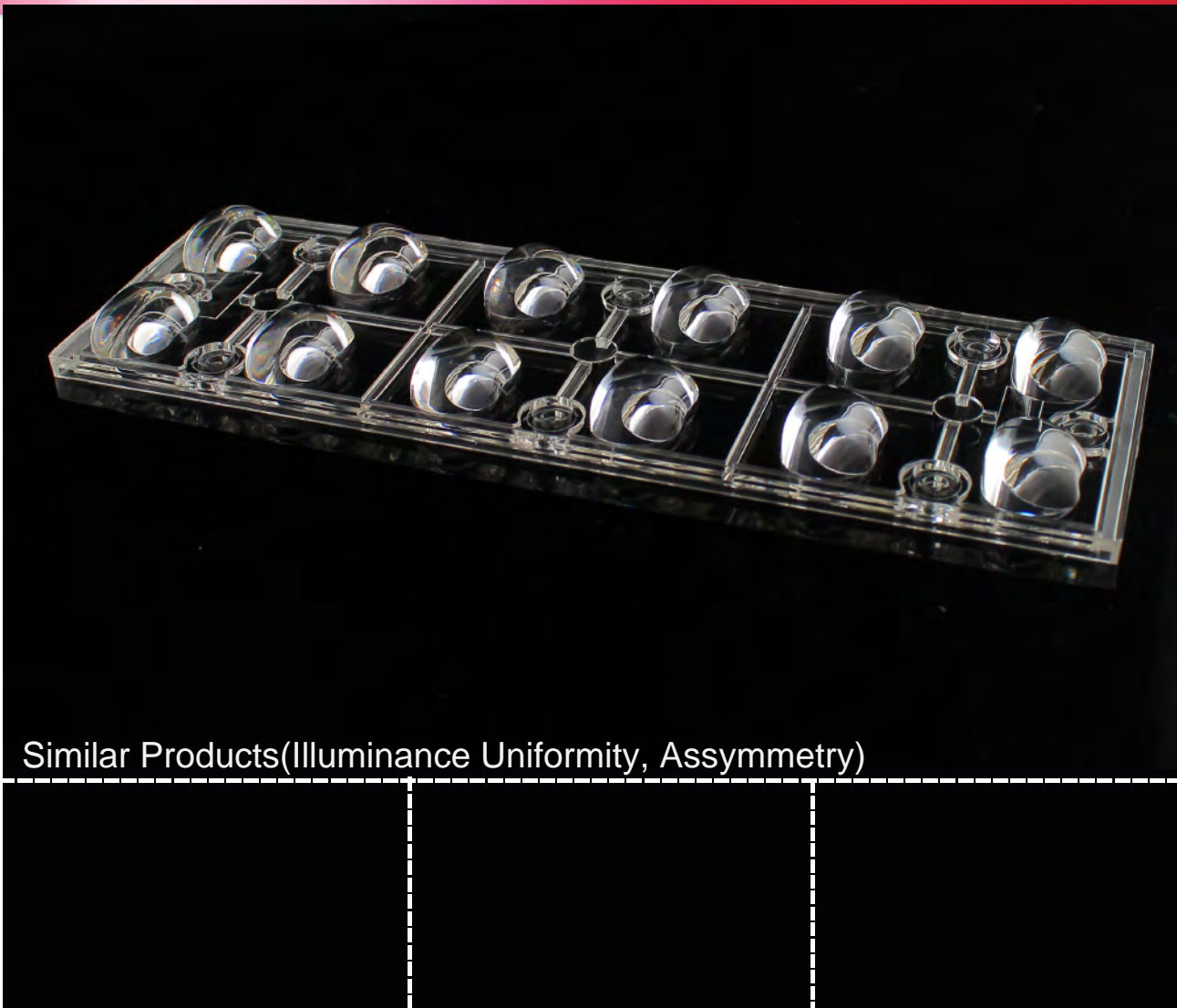


Data Sheet

LL120S-EL50130L02



Similar Products(Illuminance Uniformity, Assymetry)

■ Features & Typical Applications

- High efficiency
- Optimized for uniform effect
- Roadway Lighting

■ Table of Contents

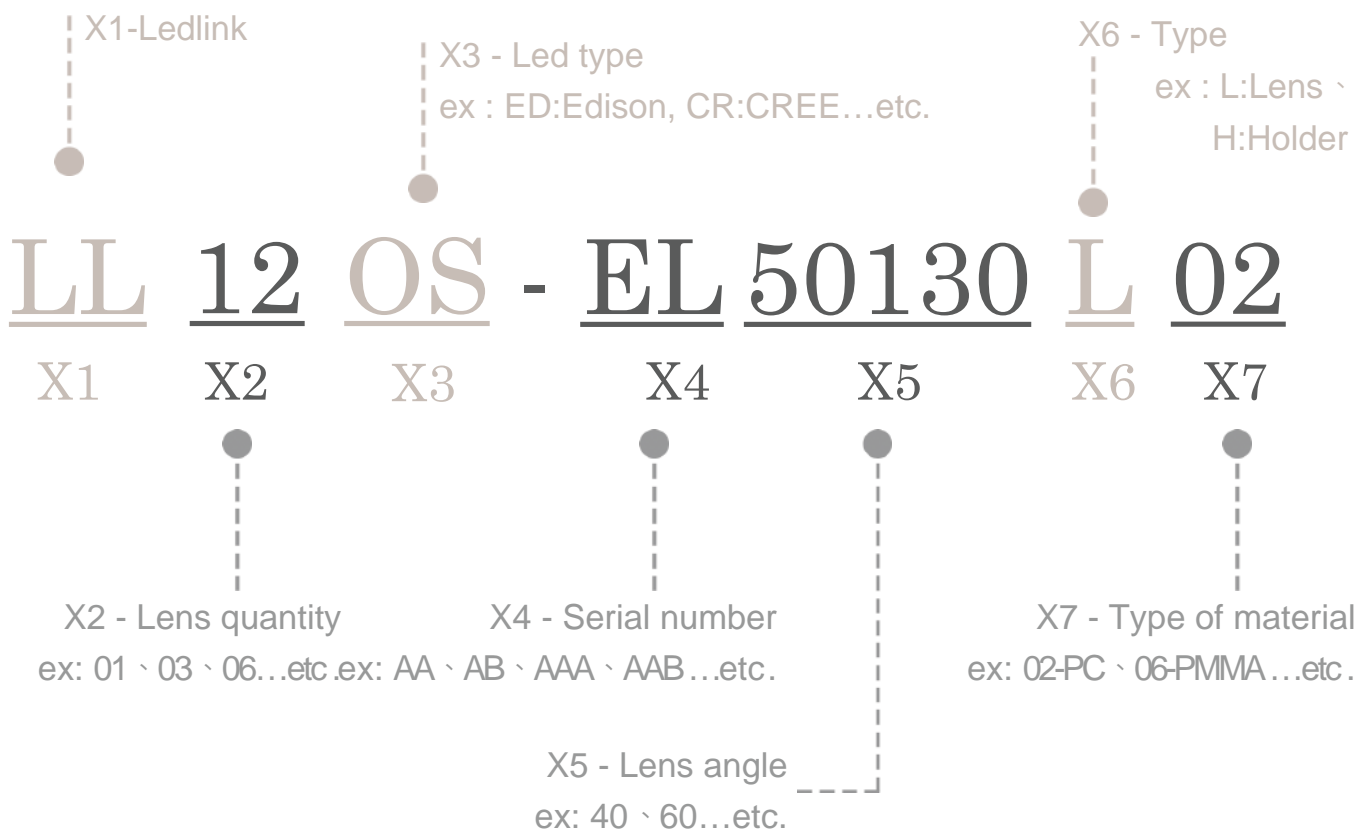
General Information & Product Nomenclature.....	P.2
Optical Specifications	P.3
Mechanical Specifications	P.4
Package Specifications	P.5

LL12OS-EL50130L02

General Information

- Lens Material : PC LEV1700
- Operating Temperature range -40°C~+110°C(upper limit +120°C).
- Storage Temperature range -40°C~+110°C(upper limit +120°C).
 - * Average transmittance in visible spectrum 400nm~700nm>90%.
- Usage and Maintenance:
 1. If necessary, clean lenses with mild soap, water and soft cloth.
 2. Never use any commercial cleaning solvents on lenses, like alcohol.
 3. Please handle or install lenses with wearing gloves, skin oils may damage lens or its optical characteristic.

Product Nomenclature



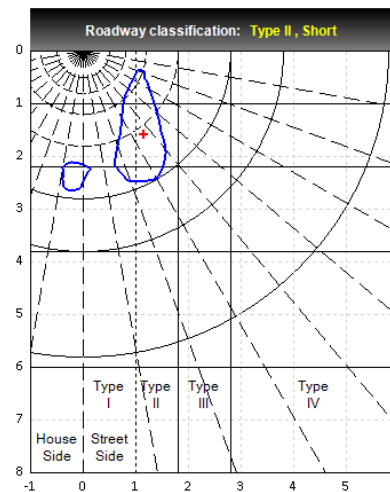
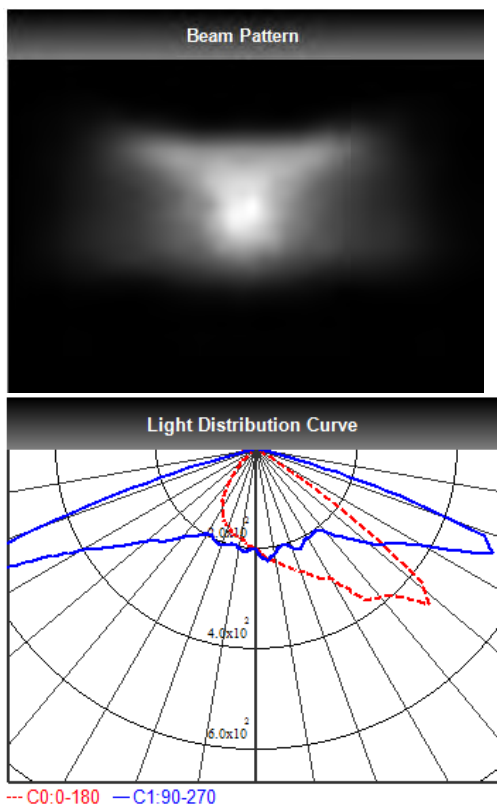
LL120S-EL50130L02 Optical Specifications



Note: (1) All the results of analysis are based on 0 degrees of elevation.
 (2) Tolerance: $\pm 10\%$.
 (3) Led Luminous Flux(I_m): 1200($\pm 5\%$).

IES File: [Download](#)

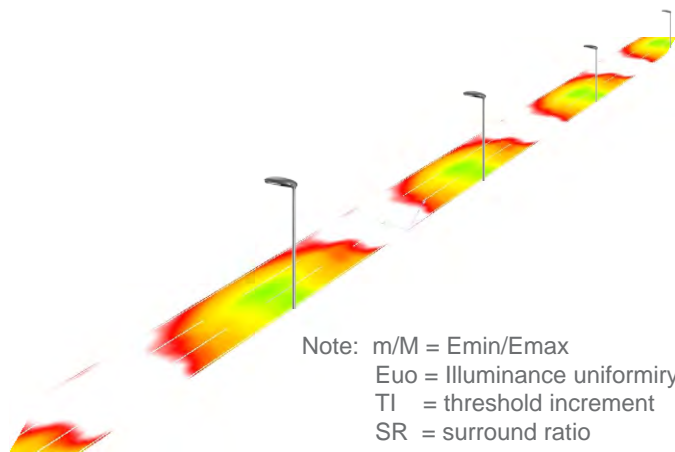
@elevation 0°



Elevation	Roadway Classification
0°	Type II, Short
5°	Type III, Short
10°	Type III, Short
15°	Type IV, Medium
20°	Type IV, Medium

DIALux Simulation Result

Analyzed file: [Download](#)



Recommend configuration condition	
Height	= 10m
Distance	= 35m
Roadwidth	= 10.5m
Elevation	= 0degree
Overhang	= 1m
Result	
m/M	= 0.4
E _{uo}	= 0.7
TI	= 12%
SR	= 0.8

*The results would be similar if the configuration conditions are equally magnified or minified.

*This testing result is obtained through testing the popular rank LED samples which provided by the original manufacturer. Hence, the testing results would be varied as the users choose same LED model but different rank.

*The analyzed file require DIALux v4.12 and above to open.

LL120S-EL50130L02 Package Specifications

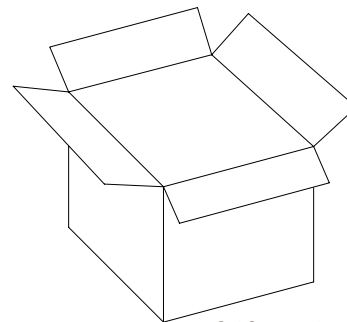
Item	Quantity	Total	Size(L*W*H)	G.W
Plastic film	1pcs/Plastic film	1pcs	15.85*5.02*0.94 cm	31g
Outer layer	12pcs/Layer	12pcs		
Outer box	20 layer/Outer box	240pcs	40*37*21 cm	



1 pcs/Plastic film



12 pcs/Layer
Each layer separated by card board



240pcs /Outer box



Note: