

# Data Sheet

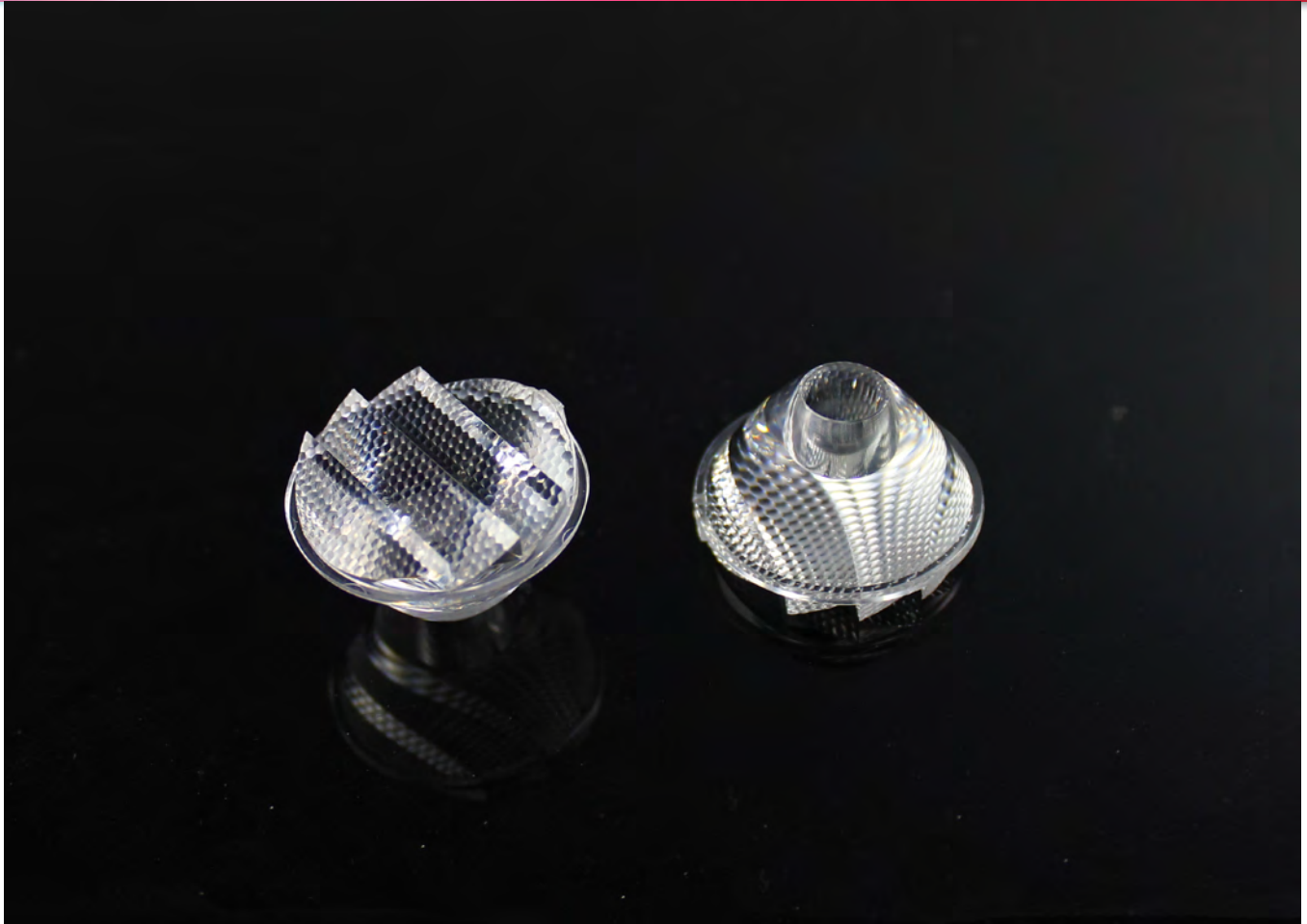
LL01ED-ACM2020L02



► LED Solution Provider



Xlamp XM-L2



## ■ Features & Typical Applications

- Wall washer Lighting
- Available with 1 beam angle
- Optimized Uniformity
- Lens without Holder

## ■ Table of Contents

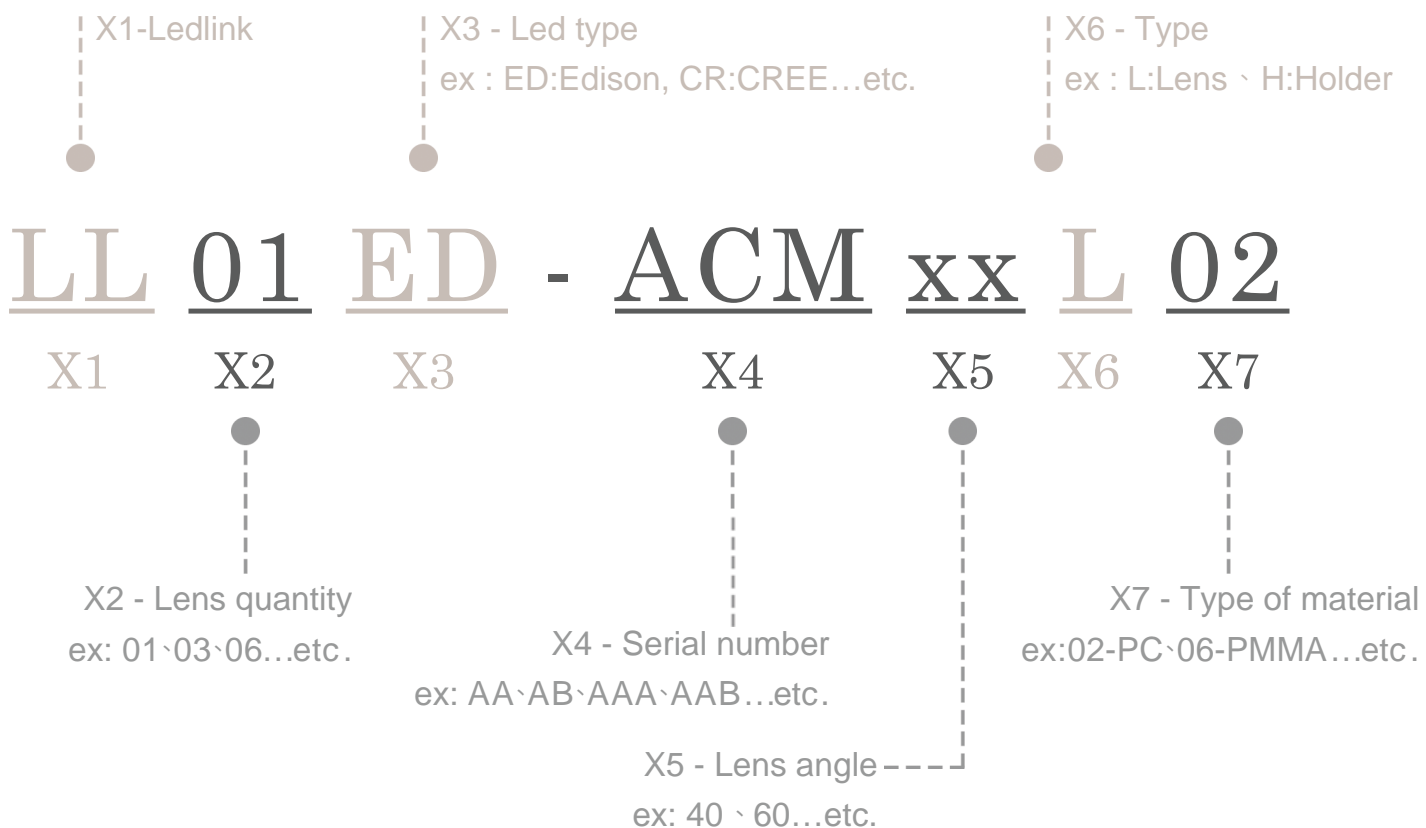
General Information & Product Nomenclature.....	P.2
Optical Specifications .....	P.3
Mechanical Specifications .....	P.4
Package Specifications .....	P.5

# LL01ED-ACM2020L02

## General Information

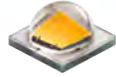
- Lens Material : PC LEV1700
- Operating Temperature range -40°C~+110°C(upper limit +120°C).
- Storage Temperature range -40°C~+110°C(upper limit +120°C).  
 \* Average transmittance in visible spectrum 400nm~700nm>90%.
- Usage and Maintenance:
  1. If necessary, clean lenses with mild soap, water and soft cloth.
  2. Never use any commercial cleaning solvents on lenses, like alcohol.
  3. Please handle or install lenses with wearing gloves, skin oils may damage lens or its optical characteristic.

## Product Nomenclature



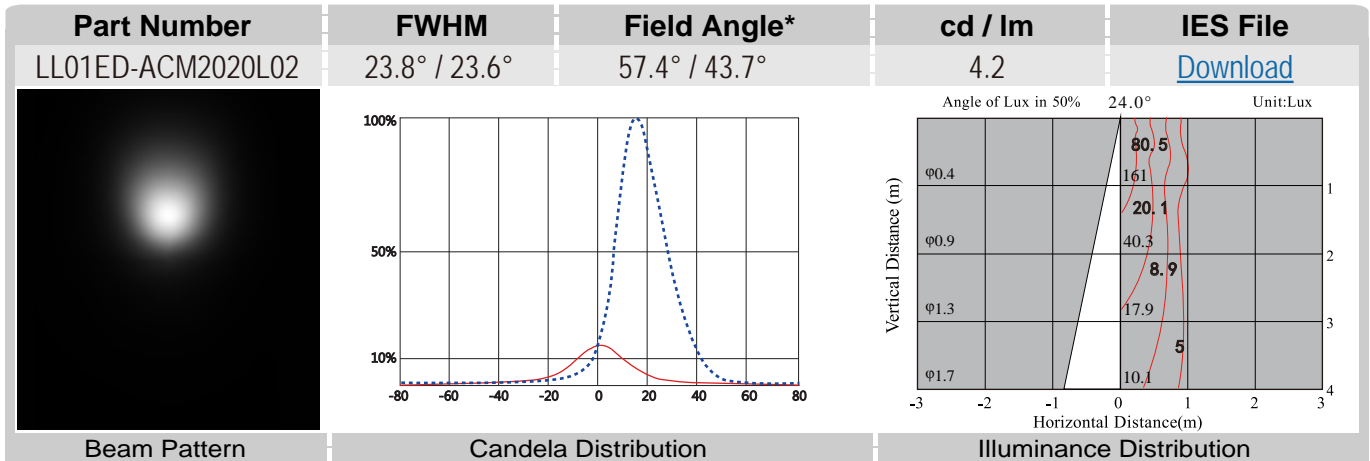
# LL01ED-ACM2020L02 Optical Specifications

**CREE**   
 LED Solution Provider

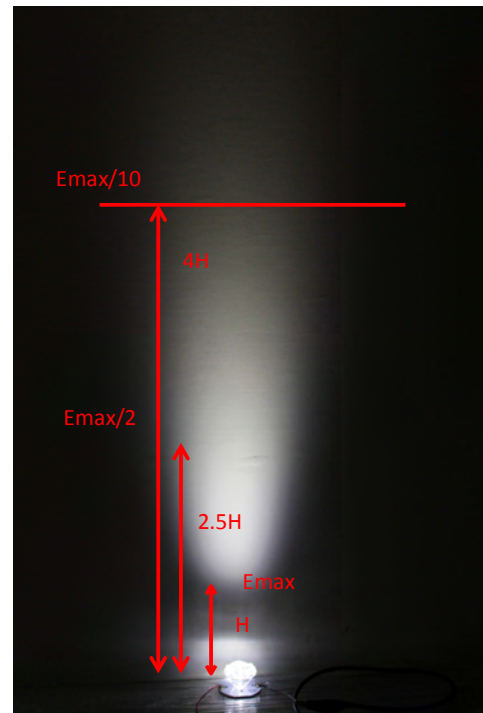
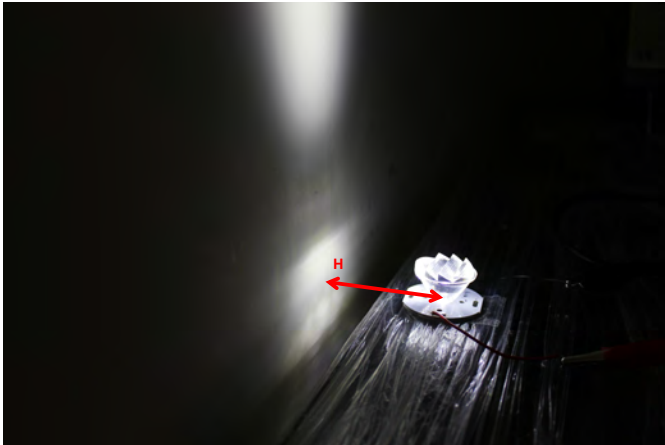


Xlamp XM-L2

Note: (1) All the results of analysis are based on 0 degrees of elevation.  
 (2) Tolerance:  $\pm 10\%$ .  
 (3) Led Luminous Flux(lm): 260( $\pm 5\%$ ).



## ● Lighting effects



\*The Field Angle is the angle between the two directions opposed to each other over the beam axis for which the luminous intensity is 10% that of the maximum luminous intensity.  
 \*This testing result is obtained through testing the popular rank LED samples which provided by the original manufacturer. Hence, the testing results would be varied as the users choose same LED model but different rank.

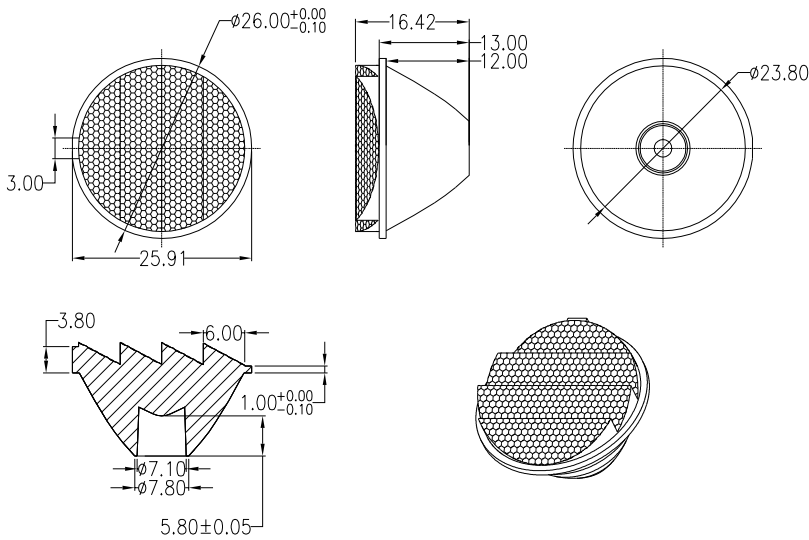
# LL01ED-ACM2020L02 Mechanical Specification

## 1. Fixing method

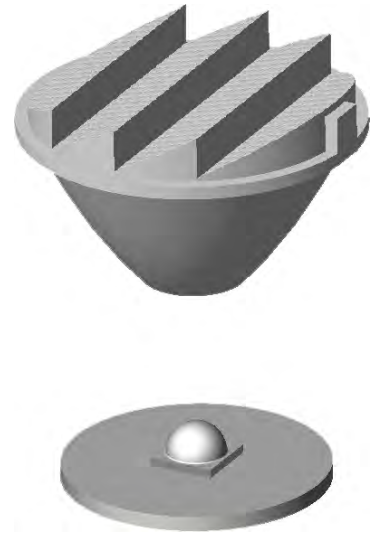
- Glue     
  Screw     
  Tape     
  Fixing-ring     
  Frame

Note: (1) All dimensions are in mm.  
 (2) All tolerance are  $\pm 0.15$  mm unless otherwise specified.

## 2. Lens dimension

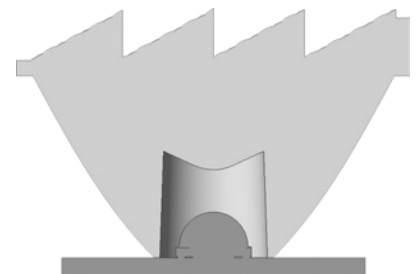


## 3. Assembly instruction



## 4. Holder dimension

## 5. View assembly lens with LED:

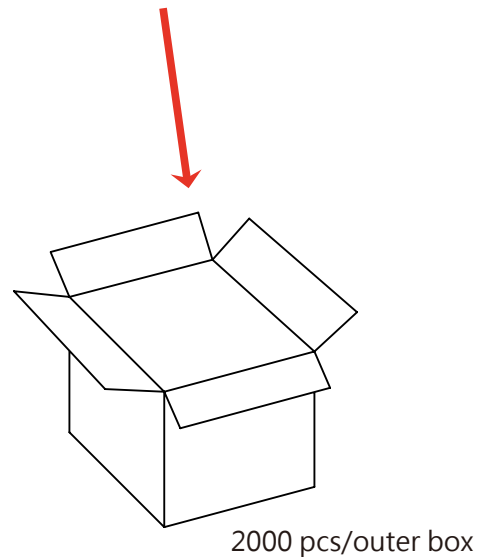
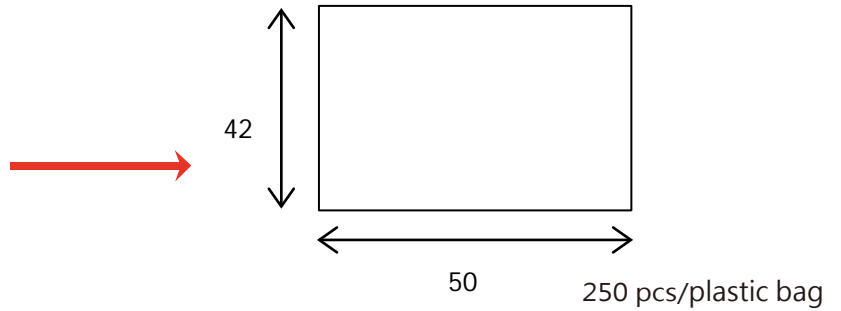


# LL01ED-ACM2020L02 Package Specifications

Item	Quantity	Total	Size(L*W*H)	G.W
plastic bag	1 pcs/plastic bag	10 pcs	4*10 cm	4.7g
plastic bag	250 pcs/plastic bag	250 pcs	42*50 cm	
outer box	8 plastic box/outer box	2000 pcs	40*37*21 cm	



10 pcs/plastic bag



**Note:**