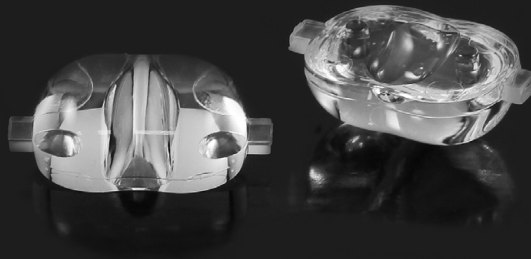


Data Sheet

LL01CR-OW70130L02



Xlamp XP-G



Similar Products(Illuminance Uniformity, Assymetry, Elevation needed)



LL01LU-NI75140L02



LL01OS-AU60140L02



LL01LU-AIK45135L02

Features & Typical Applications

- High efficiency
- Roadway Lighting
- Optimized for uniform effect
- Anti-glare

Table of Contents

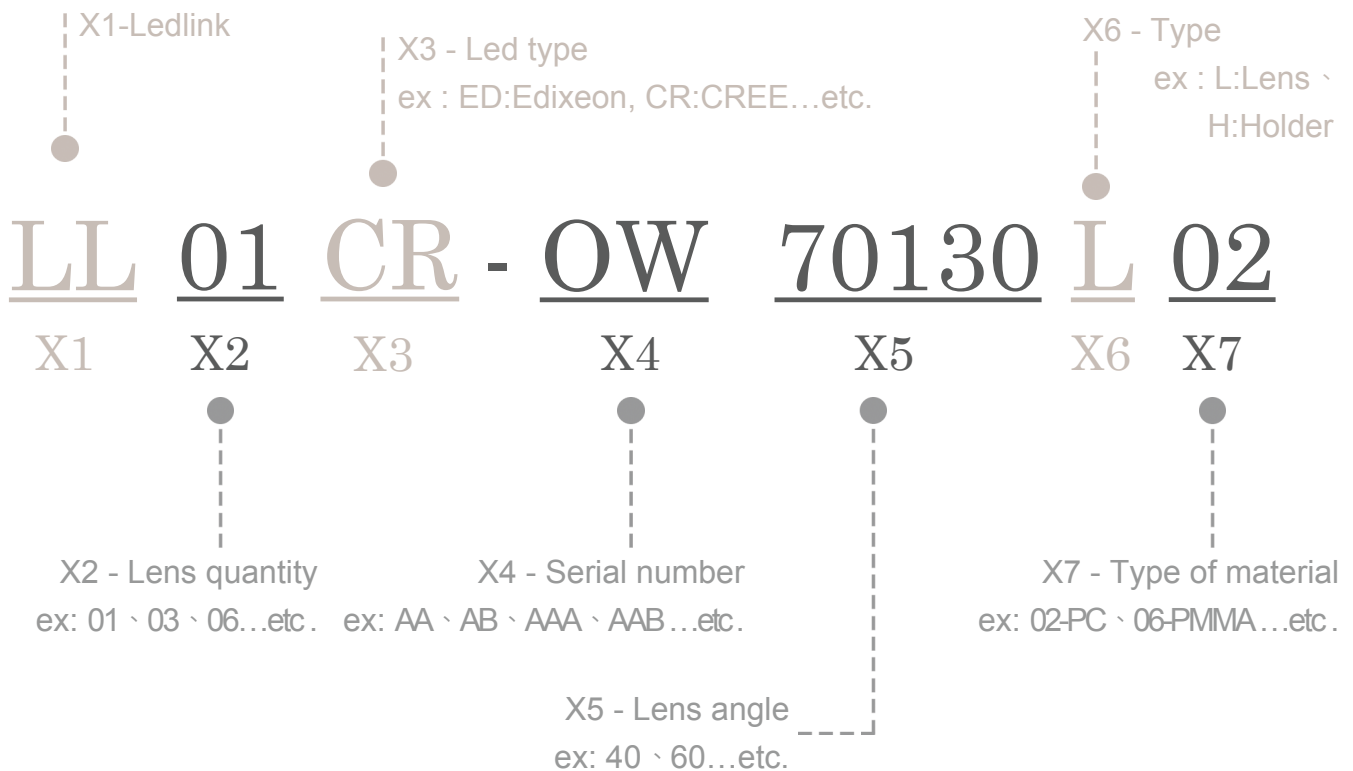
General Information & Product Nomenclature.....	P.2
Optical Specifications	P.3
Mechanical Specifications	P.4
Package Specifications	P.5

LL01CR-OW70130L02

General Information

- Lens Material Optical Grade PC
- Operating Temperature range -40°C~+110°C(upper limit +120°C)
- Storage Temperature range -40°C~+110°C(upper limit +120°C)
 - * Average transmittance in visible spectrum 400nm~700nm>90%
- Usage and Maintenance:
 1. If necessary, clean lenses with mild soap, water and soft cloth.
 2. Never use any commercial cleaning solvents on lenses, like alcohol.
 3. Please handle or install lenses with wearing gloves, skin oils may damage lens or its optical characteristic.

Product Nomenclature



LL01CR-OW70130L02

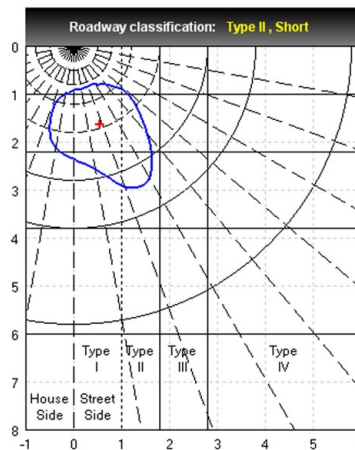
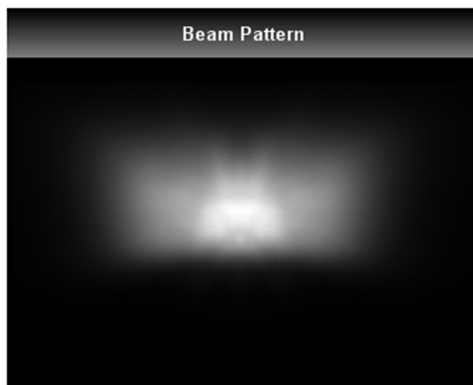
Optical Specifications



Note: (1) All the results of analysis are based on 15 degrees of elevation.
 (2) Tolerance: $\pm 10\%$.
 (3) Led Luminous Flux(lm): 111($\pm 5\%$).

IES File: [Download](#)

@elevation 15°



Elevation	Roadway Classification
0°	Type I, Short
5°	Type II, Short
10°	Type II, Short
15°	Type II, Short
20°	Type III, Short

DIALux Simulation Result

Analyzed file: [Download](#)



Note: $m/M = E_{min}/E_{max}$
 E_{uo} = Illuminance uniformity
 TI = threshold increment
 SR = surround ratio

Recommend configuration condition	
Height	= 10m
Distance	= 35m
Roadwidth	= 10.5m
Elevation	= 15degree
Overhang	= 2m
Result	
m/M	= 0.5
E_{uo}	= 0.7
TI	= 8%
SR	= 0.6

*The results would be similar if the configuration conditions are equally magnified or minified.

*This testing result is obtained through testing the popular rank LED samples which provided by the original manufacturer. Hence, the testing results would be varied as the users choose same LED model but different rank.

*The analyzed file require DIALux v4.10 and above to open.

LL01CR-OW70130L02

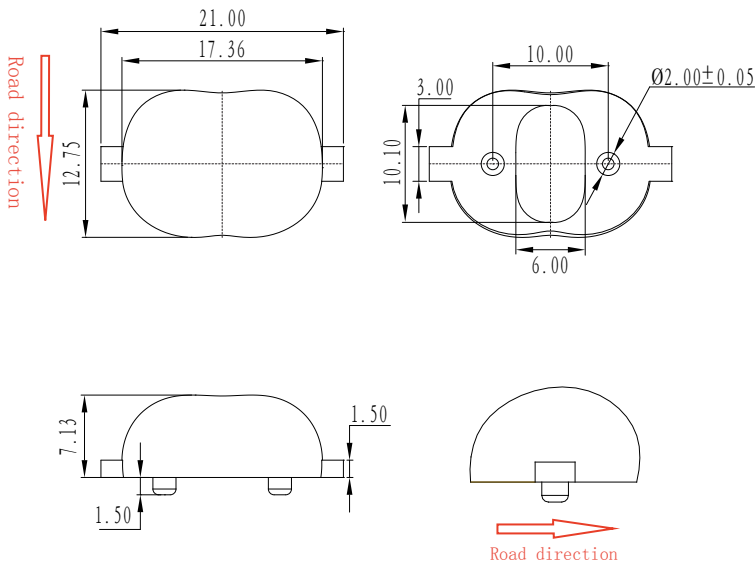
Mechanical Specification

1. Fixing method

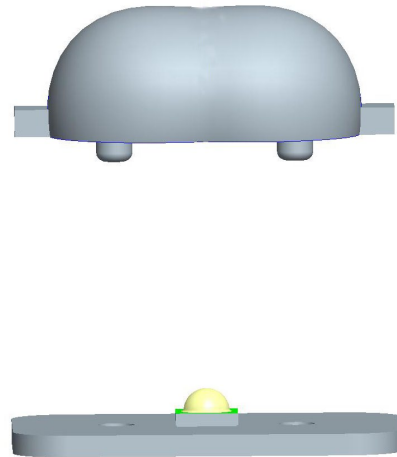
- Glue
 Screw
 Tape
 Fixing-ring
 Frame

Note: (1) All dimensions are in mm.
 (2) All measurements are ± 0.15 mm unless otherwise indicated.

2. Lens dimensions

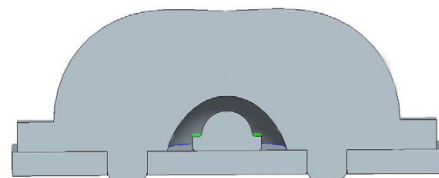


3. Lens + Leds + MCPCB assembly instruction



4. Lens assembly dimensions

5. View assembly lens with MCPCB:



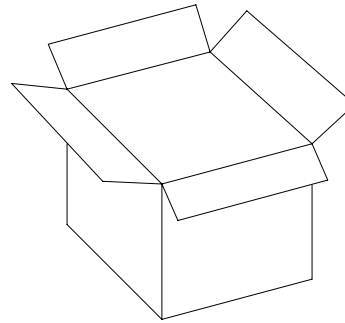
LL01CR-OW70130L02

Package Specifications

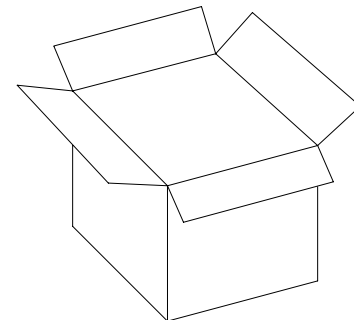
Item	Quantity	Total	Size(L*W*H)	G.W
Inner package	150pcs/plastic vacuum package	150pcs	15*20cm	1.0g
Inner box	32package/Inner box	4800pcs	29*29*22cm	
Outer box	2 Inner box/Outer box	9600pcs	60*31*25.8cm	



200pcs/Plastic vacuum package



40 package/Inner box



2 Inner box/Outer box



Note: