

Ledlink Optics, Inc
Taiwan(HQ):
15F, No.655,Bannan Rd.,
Chung - Ho Dist, New Taipei City,
Taiwan 235

Ledlink Optics(Dong Guan) Co., Ltd
Dong-Guan(Factory):
No.5, TianKeng Industrial District
HengLi Town, DongGuan City
GuangDong Province China 523478

Ledlink Optics(Yang Zhou) Co., Ltd
Yang-Zhou(Factory):
No.180,LinJiang Road,Yangzhou City,
Jiangsu Province,China



Waterproof lens

LL01OS-BFVxxxL06
FWHM 10x40° 15° 25° 30°
DxH(mm) 20.8 x 12.35
LED 2525/3045/3535/3030(SMD)

LL01NI-BYKxxL19
FWHM 20° 30° 40° 60° 25x45°
DxH(mm) 16 x 8
LED 2525/3535/3030(SMD)

LL01CR-AXSxxL06-T
FWHM 10° 30° 60° 30x65°
DxH(mm) 38 x 18.15
LED 5050(SMD)

LL01CR-CAX3585L02
FWHM 35x85°
DxWxH(mm) 24x19x10.5
LED 3535

LL01CR-CAXxxL06
FWHM 10x90° 25x90°
DxH(mm) 20.5x20.5x13.9
LED 3535



Narrow beam lens

LL01CR-BLU03L06
FWHM 3°
DxH(mm) 35 x 20
LED 2525/3535/5050(SMD)/9090/LES:Φ6

LL01CR-CTK10L02-P
FWHM 10°
DxH(mm) 49.5x7.8
LED 3535/LES:Φ6.7

LL01ED-AYxxL06-M2
LL01ED-FGxxL06-M2
FWHM 10° DxH(mm) 43.8x24.5
LED 5050(SMD)/7070/
LES:Φ6/Φ6.3/Φ7.5/Φ9/Φ9.8

LL01ZZ-AHA05L06-M2
FWHM 5°
DxH(mm) 52 x 27
LED 5050(SMD)



Waterproof lens



Narrow beam lens

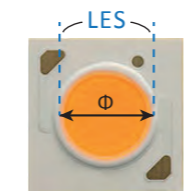


Elliptical beam lens



Color mixing lens

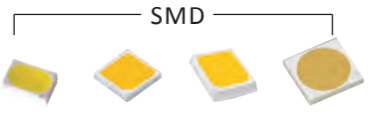
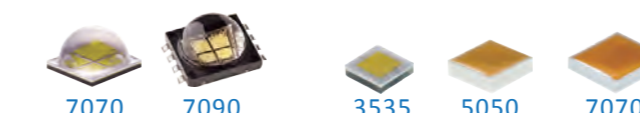
COB LED



LES: Light Emitting Surface



LED Package size



Landscape lighting

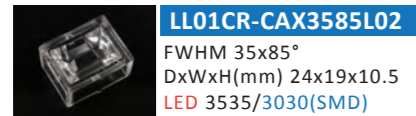




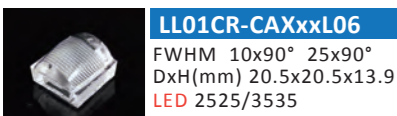
Elliptical beam lens



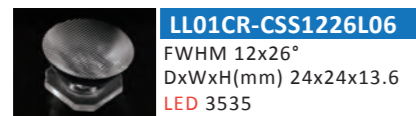
LL01NI-BYK2545L19
FWHM 25x45°
DxH(mm) 16 X 8
LED 2525/3535/3030(SMD)



LL01CR-CAX3585L02
FWHM 35x85°
DxWxH(mm) 24x19x10.5
LED 3535/3030(SMD)



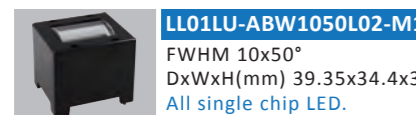
LL01CR-CAXxxL06
FWHM 10x90° 25x90°
DxH(mm) 20.5x20.5x13.9
LED 2525/3535



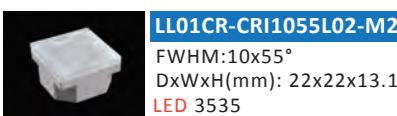
LL01CR-CSS1226L06
FWHM 12x26°
DxWxH(mm) 24x24x13.6
LED 3535



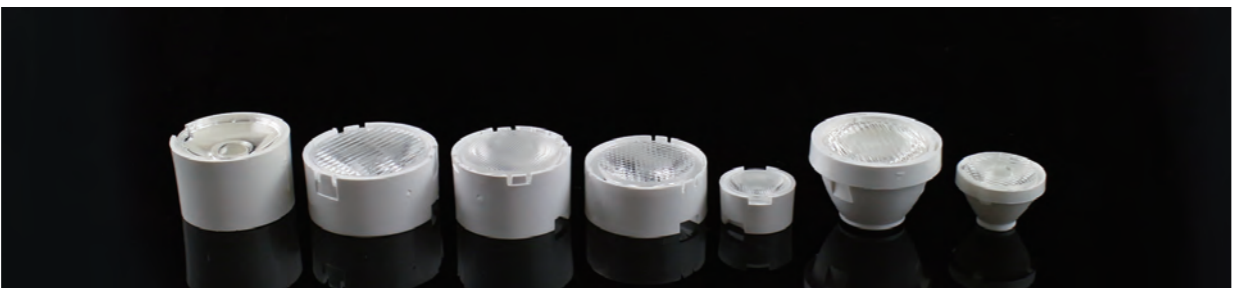
LL01OS-BFV1040L06
FWHM 10x40°
DxH(mm) 20.8 x 12.35
LED 3045/3535/3030(SMD)



LL01LU-ABW1050L02-M1
FWHM 10x50°
DxWxH(mm) 39.35x34.4x35.35
All single chip LED.



LL01CR-CRI1055L02-M2
FWHM:10x55°
DxWxH(mm): 22x22x13.15
LED 3535



Tape available

Part number	Beam angle	DxH(mm)	LED
LL01CR-BDFxxL06-M2 T	Full angle 30x65° 30x70°	13.5x7.35	XB-D
LL01OS-BDFxxL06-M2 T	Full angle 30x65° 30x70°	13.5x7.35	3030(SMD)
LL01LU-DFxxL06-M2 T	Full angle 30x65°	13.5x7.35	3045
LL01CR-DFxxL06-M2 T	Full angle 30x65°	13.5x7.35	XPG2
LL01CR-HQxxL06-M2	Full angle 25x45°	16x10.3	XPG2
LL01LU-AFCxxL06-M2 T	FWHM 10x35° 15x30°	21.3x12.35	3045
LL01OS-AFCxxL06-M2 T	FWHM 10x35° 15x30°	21.3x12.35	3030(SMD)
LL01CR-AFCxxL06-M2 T	FWHM 10x35° 15x30°	21.3x12.35	3030(SMD)
LL01ED-ALxxL06-M2	Full angle 30x65°	21.3x14	1LA5
LL01NI-NExxL06-M2 T	Full angle 10x45° 25x45°	21.4x15.8	3535

Part number	Beam angle	DxH(mm)	LED
LL01CR-OSxxL06-M2 T	Full angle 30x65° 30x85°	22.4x9.13	XB-D
LL01ZZ-EXxxL06-M2 T	Full angle 30x65° 30x85°	22.4x9.63	XPG2
LL01LU-EXxxL06-M2 T	Full angle 30x65° 30x85°	22.4x9.63	3045
LL01OS-EXxxL06-M2 T	Full angle 30x65° 30x85°	22.4x9.63	3030(SMD)
LL01CR-EXxxL06-M2 T	Full angle 30x65° 30x85°	23x10.63	XPG2
LL01CR-NExxL06-M2 T	FWHM 10x45° 25x45°	23.5 x 15.8	XPG2
LL01CR-CNExxL06-M2 T	Full angle 10x45° 25x45°	23.5 x 15.8	3535
LL01LU-FLxxL06-M2 T	Full angle 30x65°	24.3x11.6	3045
LL01CR-FLxxL06-M2	Full angle 30x65°	24.3x12.15	MCE
LL01XP-FLxxL06-M2 T	Full angle 30x65°	24.3x11.6	3535



Color mixing lens

Lens

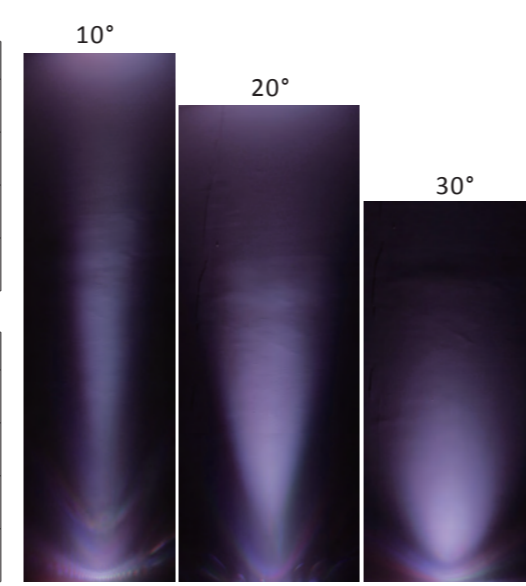
Part number	Beam angle	DxH(mm)	LED
LL01ED-AFDxxL06	FWHM 15° 20°	26x15.5	3535/5050(SMD)
LL01ED-AKxxL06	Full angle 25° 40°	34.4x18.8	3030(SMD)/7070/5050(SMD)/ LES:Φ6
LL01CR-ANWxxL06	FWHM 10° 20° 30°	45x26.3	7090/Ostar RGBW
LL01CR-BJH10L06	FWHM 10°	45x26.3	5050(SMD)

With holder

Part number	Beam angle	DxH(mm)	LED
LL01ED-CVxxL06-M2	FWHM 15°	21.2x15.1	1LA5
LL01ED-CVxxL02-M2	FWHM 25° 45°	21.2x15.1	1LA5
LL01ED-BCQxxL06-M1	FWHM 15° 30° 40° 15x30° 30x50°	38.1x20.2	5050(SMD)
LL01CR-BCQxxL06-M1	FWHM 15° 30° 40° 15x30° 30x50°	38.1x20.9	7090



Wall wash effect:



Tape available

NE / ANE / BNE Series

Part number	Beam angle	DxH(mm)	LED
LL01NI-NExxL06-M2 T	Full angle 15° 17° 25° 40° 60° 80° 10x45° 25x45°	21.4x15.8	3535
LL01NI-BNExxL06-M2 T	Full angle 25° 40° 60°	21.4x15.8	3535
LL01NI-UDxxL02-M2 T	FWHM 10° 20° 30°	21.4x15.8	3535
LL01CR-CNExxL06-M2 T	Full angle 15° 17° 25° 40° 60° 80° 10x45° 25x45°	23.5x15.8	3535
LL01NI-ANExxL02-M2 T	FWHM 10° 20° 30°	23.5x15.8	3535
LL01CR-BNExxL06-M2	Full angle 25° 40° 60°	23.5x15.8	XB-D
LL01CR-NExxL06-M2 T	Full angle 15° 17° 25° 40° 60° 80° 10x45° 25x45°	23.5x15.8	XP-G2

EX / BEX Series

Part number	Beam angle	DxH(mm)	LED
LL01CR-OSxxL06-M2 T	Full angle 10° 25° 40° 60° 30x65° 30x85°	22.4x9.13	XB-D
LL01CR-BEXxxL06-M2 T	Full angle 25° 40° 60°	22.4x9.13	XB-D
LL01ZZ-EXxxL06-M2 T	Full angle 10° 25° 40° 60° 30x65° 30x85°	22.4x9.63	XP-G2
LL01LU-EXxxL06-M2 T	Full angle 10° 25° 40° 60° 30x65° 30x85°	22.4x9.63	3045
LL01OS-EXxxL06-M2 T	Full angle 10° 25° 40° 60° 30x65° 30x85°	22.4x9.63	3030(SMD)
LL01CR-EXxxL06-M2 T	Full angle 10° 25° 40° 60° 30x65° 30x85°	23x10.63	3535

AFC Series

Part number	Beam angle	DxH(mm)	LED
LL01LU-AFCxxL06-M2 T	FWHM 10° 15° 25° 30° 10x35° 15x30°	21.3x12.35	3045
LL01OS-AFCxxL06-M2 T	FWHM 10° 15° 25° 30° 10x35° 15x30°	21.3x12.35	3030(SMD)
LL01CR-AFCxxL06-M2 T	FWHM 10° 15° 25° 30° 10x35° 15x30°	21.3x12.35	3535

FL / AFL Series

Part number	Beam angle	DxH(mm)	LED
LL01LU-AFLxxL02-M2 T	FWHM 35° 50° 70°	23.6x12.5	7070(SMD)
LL01LU-FLxxL06-M2 T	Full angle 10° 25° 40° 60° 30°x65°	24.3x11.6	3045
LL01XP-FLxxL06-M2 T	Full angle 10° 25° 40° 60° 30°x65°	24.3x11.6	3535
LL01ZZ-AFLxxL02-M2	FWHM 35° 50° 70°	24.3x12.3	7090
LL01CR-FLxxL06-M2	Full angle 10° 25° 40° 60° 30°x65°	24.3x12.15	7090

DG Series

Part number	Beam angle	DxH(mm)	LED
LL01LU-DGxxL06-M2	Full angle 20° 30° 40° 50° 60°	32.8x17.3	7070(SMD)
LL01CR-ADGxxL06-M2 T	FWHM 12° 24° 36°	32.8x18	5050(SMD)
LL01XP-DGxxL06-M2	Full angle 20° 30° 40° 50° 60°	32.8x18	3535

DF / BDF / AAF Series

Part number	Beam angle	DxH(mm)	LED
LL01CR-DFxxL06-M2 T	Full angle 25° 40° 60° 80° 100° 30x65°	13.5x7.35	XP-G2
LL01CR-BDFxxL06-M2 T	Full angle 25° 40° 60° 80° 100° 30x65° 30x70°	13.5x7.35	XB-D
LL01OS-BDFxxL06-M2 T	Full angle 25° 40° 60° 80° 100° 30x65° 30x70°	13.5x7.35	3030(SMD)
LL01LU-DFxxL06-M2 T	Full angle 80° 100° 30x65°	13.5x7.35	3045
LL01CR-AAFxxL02-M2 T	FWHM 25° 45° 60°	13.5x7.35	XP-G2
LL01HS-AAFxxL02-M2 T	FWHM 25° 45° 60°	13.5x7.35	3535

Other Series

Part number	Beam angle	DxH(mm)	LED
LL01CR-HQxxL06-M2	Full angle 15° 25° 30° 40° 60° 80° 25x45°	16x10.3	XP-G2
LL01CR-OTxxL06-M2	Full angle 32° 40° 60° 80°	16.6x10.45	XP-G2
LL01OS-MQxxL06-M2	Full angle 15° 25° 40° 60°	21.05x14.75	3030(SMD)
LL01ED-ALxxL06-M2	FWHM 15° Full angle 30°x65°	21.3x14	1LA5
LL01NI-QI25L06-M2	FWHM 25°	30x17	LES:Φ6.7/ Φ8.7
LL01CR-ZExxL02-M2 T	FWHM 20° 30° 45°	37.1x20.7	MTG2