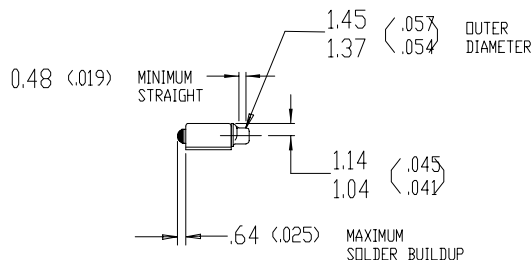
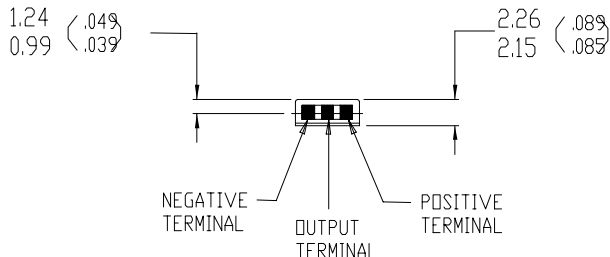
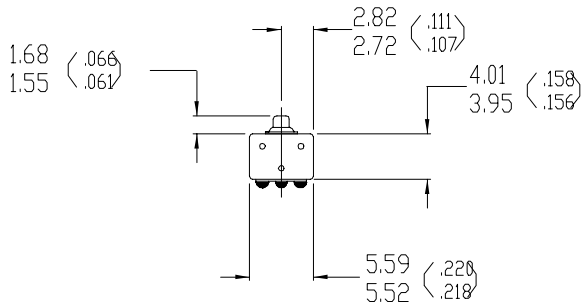


NOTE:

1. INCREASED PRESSURE AT THE SOUND INLET CAUSES A POSITIVE GOING VOLTAGE TO APPEAR AT THE OUTPUT TERMINAL, RELATIVE TO THE NEGATIVE TERMINAL.



- EK-5033
- EK-5024
- EK-3089-C
- EK-3089
- EK-3033-C
- EK-3033
- EK-3031
- EK-3029
- EK-3028-C
- EK-3028
- EK-3024-C
- EK-3024
- MODEL NO.

NOMINAL WEIGHT  
.13 GRAM

DIMENSIONS IN MILLIMETERS (INCHES)

ISSUE

E

KNOWLES ELECTRONICS

KNOWLES ELECTRONICS, INC. ITASCA, ILLINOIS U.S.A.

KNOWLES ELECTRONICS, CO., BURGESS HILL, SUSSEX, ENGLAND

SCALE: 2:1

DO NOT SCALE DRAWING

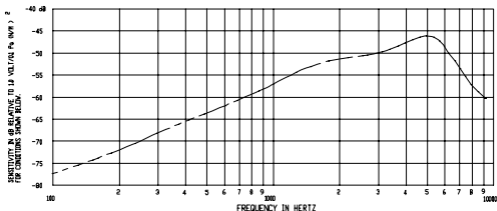
DR. BY GJP DATE 6-24-91

CK. BY TKW DATE 7-2-91

APP. BY TFL DATE 7-2-91

TITLE: 12S MICROPHONE  
OUTLINE DRAWING

EK-0A  
SHT 1.1



FREQUENCY	SENSITIVITY			DEVICE CONFORMITY	
	MIN.	NOM.	MAX.	RANGE OF DEVIATION FROM 1 kHz	
300	---	-68.0	---	-82.5	-8.5
1000	-60.0	-57.6	-54.0	0.0	6.0
4300-5700	---	-46.0	---	+6.8	+16.0

## NOTES:

- CASE CONNECTED TO NEGATIVE TERMINAL.
- MICROPHONE TO BE FUNCTIONAL WITH 10 VDC SUPPLY.
- CONFORMS TO REQUIREMENTS SHOWN ON 'ELECTRET MICROPHONE ENVIRONMENTAL QUALIFICATIONS TEST, EK-PA SHEET 2.2' WITH REF. FREQ. OF 1000 Hz
- TYPICAL SENSITIVITY TO HUMIDITY AT 1000Hz IS 0.02 dB/ZRH
- SENSITIVITY AND NOISE VALUES INDICATED ON THIS SPECIFICATION ARE VALID AT 50% HUMIDITY
- CAPACITANCE MEASUREMENT MADE WITH BOONTON MODEL 7200 OR EQUIVALENT WITH APPLIED AC VOLTAGE OF 15mVOLTS AT 1 MHz AND 0 VDC. INCLUDES CIRCUIT CAPACITANCE IN PARALLEL WITH CAPACITOR.
- \* CUSTOM SHEET L1 MAY APPLY.

MODEL NUMBER	OUTLINE DRAWING*	DC SUPPLY	AMPLIFIER CURRENT DRAIN	SENSITIVITY CHANGE ON REDUCING SUPPLY TO 5VDC	'A' WEIGHTED NOISE (Re 1.0 VOLT)	OUTPUT IMPEDANCE OHMS			CAPACITANCE *50V	
						MIN.	NOM.	MAX.	OUTPUT TO NEGATIVE	OUTPUT TO POSITIVE
EK-302B	EK-0A	1.3V	50uA MAX.	3 dB MAX.	-100.0 dB MAX.	2800	4400	6800	N/A	N/A
EK-302B-C	EK-0A	1.3V	50uA MAX.	3 dB MAX.	-100.0 dB MAX.	2800	4400	6800	58pF	58pF

KNOWLES ELECTRONICS

KNOWLES ELECTRONICS, INC. ITASCA, ILLINOIS U.S.A.

KNOWLES ELECTRONICS, CO. BURGESS HILL, SUSSEX, ENGLAND

When test units are used to establish incoming inspection acceptance/rejection criteria, correction of test equipment and standards is also required for elimination of equipment and test method variations.

TITLE

MICROPHONE  
PERFORMANCE SPECIFICATIONEK-PC  
SHT 2.1

DATE

GJP 6-24-91

DATE

TKW 6-27-91

DATE

TFL 6-27-91

ISSUE

D