

DIP Switches

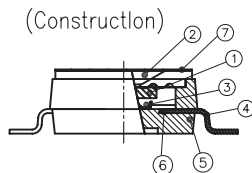
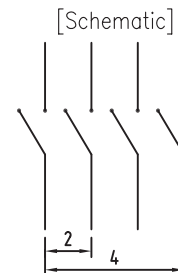
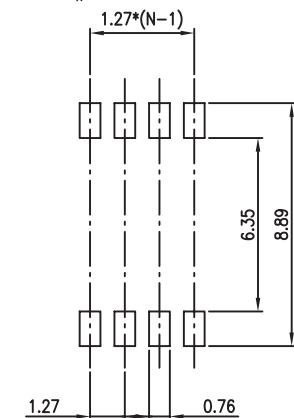
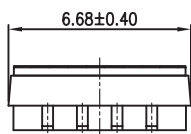
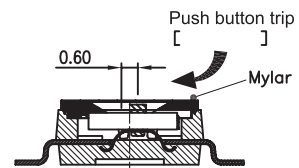
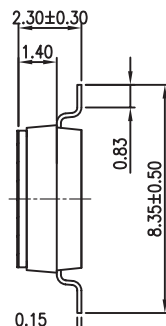
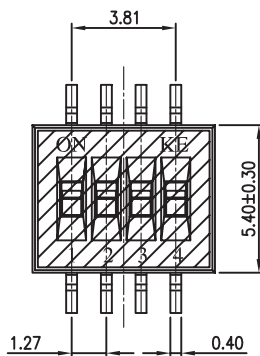
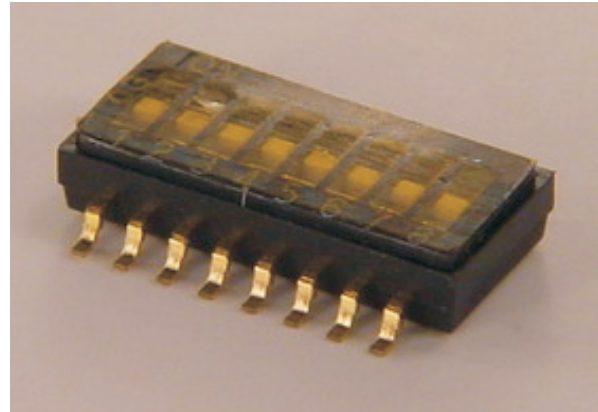
KLS7-KPH SMD DIL Switch Pitch 1.27mm

Specification:

Operation Force: 1000gf max
 Operating Temperature: -30oC ~ +85oC
 Storage Temperature: -40oC ~ +85oC
 Mechanical Life: 1,000 Operations

Material:

- 1.Actuator:UL 94 V0,White
- 2.Cover:UL 94 V0,Black
- 3.Movable:Beryllium Copper,3u" Gold
- 4.Terminal:Brass,1u" Gold
- 5.Base:UL 94 V0,Black
- 6.Terminal Contact:Brass,3u" Gold
- 7.Mylar:UL 94 V0,0.05mm



RECOMMENDED P.C.B. LAYOUT (TOP VIEW)

ORDER INFORMATION

Product NO.: KLS7-KPH-04-N-1 1

