

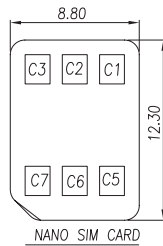
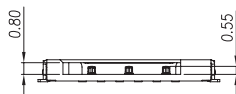
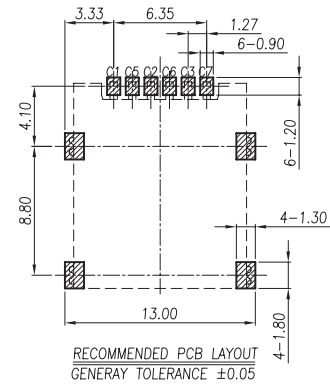
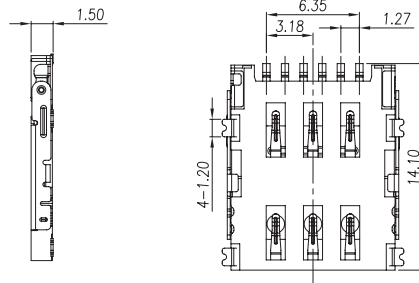
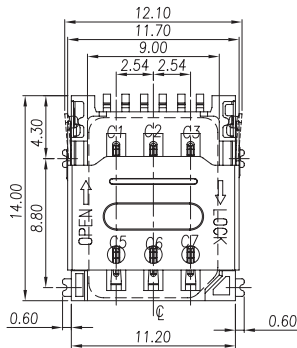
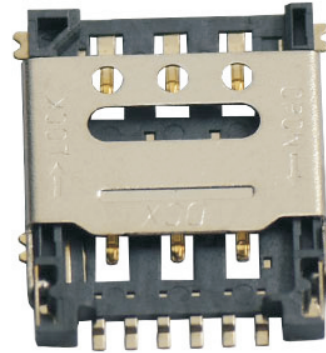
# SIM Card Connector

## SIM card Connector Series

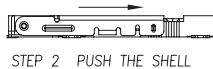
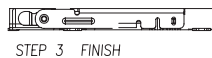
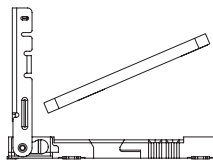
L-KLS1-SIM-077-6P-H1.5-R NANO SIM HINGE TYPE 1.50H

**NOTES:**

1. MATERIAL:
  - 1.1) PLASTIC: HIGH TEMP BLACK
  - 1.2) TERMINAL: COPPER ALLOY, T=0.15±0.01
  - 1.3) SHELL: MATERIAL: SUS, T=0.20±0.01
2. TERMINAL PLATING:
  - 2-1: TERMINAL CONTACT AREA: PLATING AU  
SOLDER AREA: PLATING SN  
UNDER PLATING: NICKEL 80u" Min.
  - 2-2: SHELL PLATING NICKEL OVER ALL



SIM CARD	
Pin No.	NAME
C1	VCC
C2	RST
C3	CLK
C5	GND
C6	VPP
C7	I/O



## ORDER INFORMATION

Product NO.: L-KLS1-SIM-077-6P-H1.5-R

Pos. NO. \_\_\_\_\_ SIM Card Connector Type \_\_\_\_\_