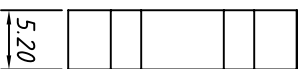
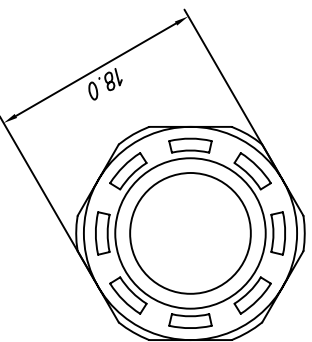


Nut



5.20



18.0

Material
Nut and Body Material:

Film:

PC
EPTFE

Sealing:

NBR, EPDM

IP rating:

IP67

Thread:

M12×1.5

Panel Mounting:

ø12 or M12×1.5

Temp. Range:

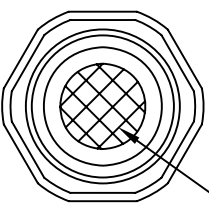
-40 ° C ~ + 125 ° C

breathable valve Range:

1300ml/minute

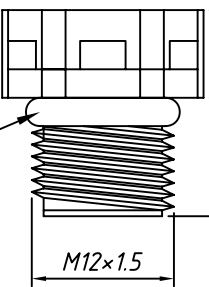
Maximum torque:

10Kgf.cm Max.



body

Film

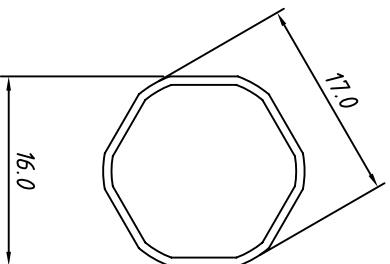


17.3

7.4

M12×1.5

sealing

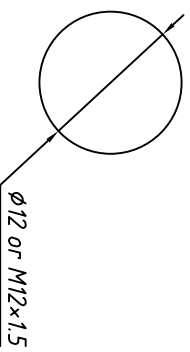
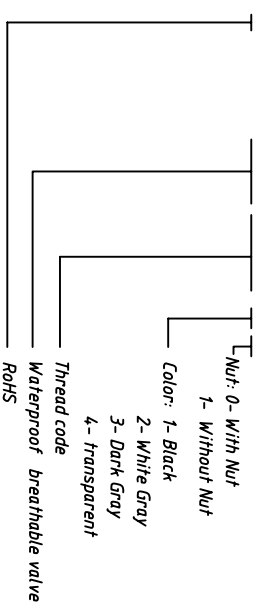


17.0

16.0

Order Information

L-KLS8-VA02 M1201-x 0



ø12 or M12×1.5

Panel Mounting
hole diameter

GENERAL TOLERANCE		ANGLE TOLERANCE		DESCRIPTION	
X. ±0.60	X. ±5°	M12×1.5 waterproof breathable valve			
X ±0.38	.X ±3°	KLS P/N: KLS8-VA02M1201-x0			
XX ±0.25	.XX ±2°	KLS P/N: KLS8-VA02M1201-x0			
Draw 2018-01-20	PROJECTION	KLS P/N: KLS8-VA02M1201-x0			
Check 2018-01-20	UNITS	KLS P/N: KLS8-VA02M1201-x0			
SCALE	SHEET SIZE	KLS P/N: KLS8-VA02M1201-x0			
	A4	KLS P/N: KLS8-VA02M1201-x0			



NingBo KLS ELECTRONIC CO.,LTD.