

Female Header Series

KLS1-208Y FEMALE HEADER 2.54mm-high 5.0mm (0.100")

Electrical Characteristics:

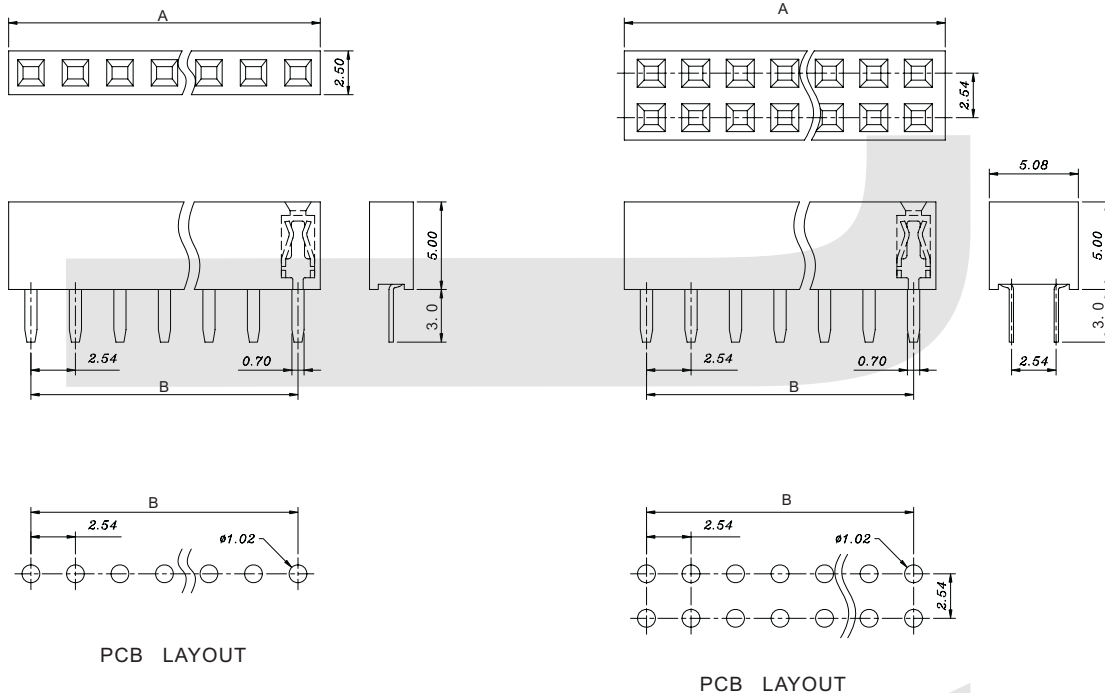
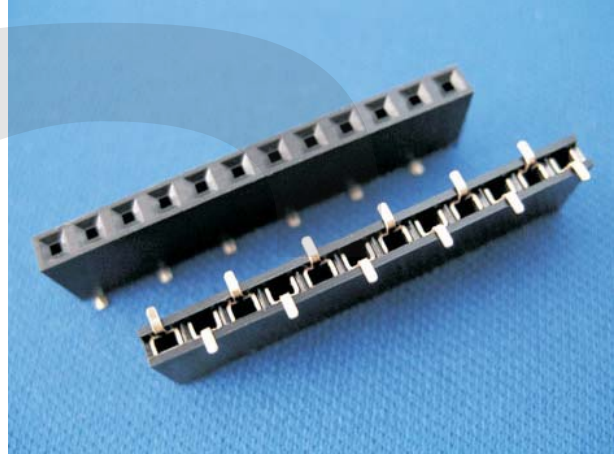
Current Rating: 1 AMP
 Insulator Resistance: 5000MΩmin. at DC 500V
 Contact Resistance: 20mΩmax. at DC 100mA
 Operating Temperature: -45°C~+105°C

Material:

Housing: 30% Glass filled PBT UL94V-0
 Contacts: Brass or Phosphor Bronze
 Plating: Gold plated: 0.8u" over 50u" nickel

Features:

- * Available in both straight and right angle.
- * Tuning fork contacts offer lower cost for competitive market.



Position	2 Thru 80
Dimension	2.54 X N + 0.5
A±0.20	2.54 X N + 0.5
B±0.15	2.54 X N - 2.54

ORDER INFORMATION

Product No.: KLS1-208Y-5.0-1-XX-S

Pos. No. _____ Tail Style: S=Straight Pin R=Right Pin T=SMT Pin
 Female Header 2.54mm Series _____ Total pin number: XX=02-80Pin
 High: 5.0mm, 5.7mm _____ 1=Single layer 2=Double layer

Female Header Series

KLS1-208Y FEMALE HEADER 2.54mm-high 5.0mm (0.100")

Electrical Characteristics:

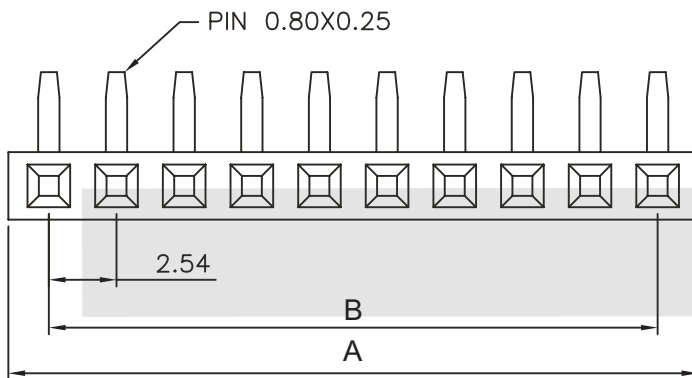
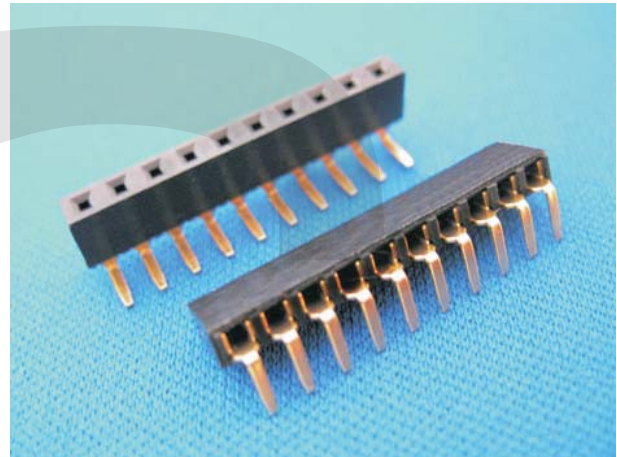
Current Rating: 1 AMP
 Insulator Resistance: 5000MΩmin. at DC 500V
 Contact Resistance: 20mΩmax. at DC 100mA
 Operating Temperature: -45°C~+105°C

Material:

Housing: 30% Glass filled PBT UL94V-0
 Contacts: Brass or Phosphor Bronze
 Plating: Gold plated: 0.8u" over 50u" nickel

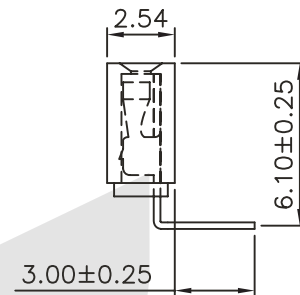
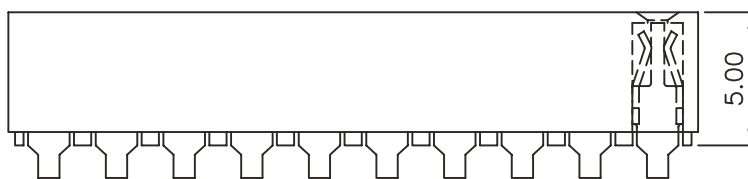
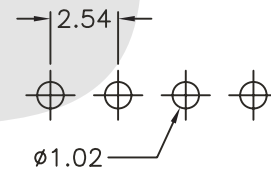
Features:

- * Available in both straight and right angle.
- * Tuning fork contacts offer lower cost for competitive market.



Position	2 Thru 80
Dimension	2.54 X N + 0.5
A±0.20	2.54 X N + 0.5
B±0.15	2.54 X N - 2.54

P.C.B Layout



ORDER INFORMATION

Product No.: KLS1-208Y-5.0-1-XX-R

Pos. No. _____ Tail Style: S=Straight Pin R=Right Pin T=SMT Pin
 Female Header 2.54mm Series _____ Total pin number: XX=02-80Pin
 High: 5.0mm, 5.7mm _____ 1=Single layer 2=Double layer

Female Header Series

KLS1-208Y FEMALE HEADER 2.54mm-high 5.0mm (0.100")

Electrical Characteristics:

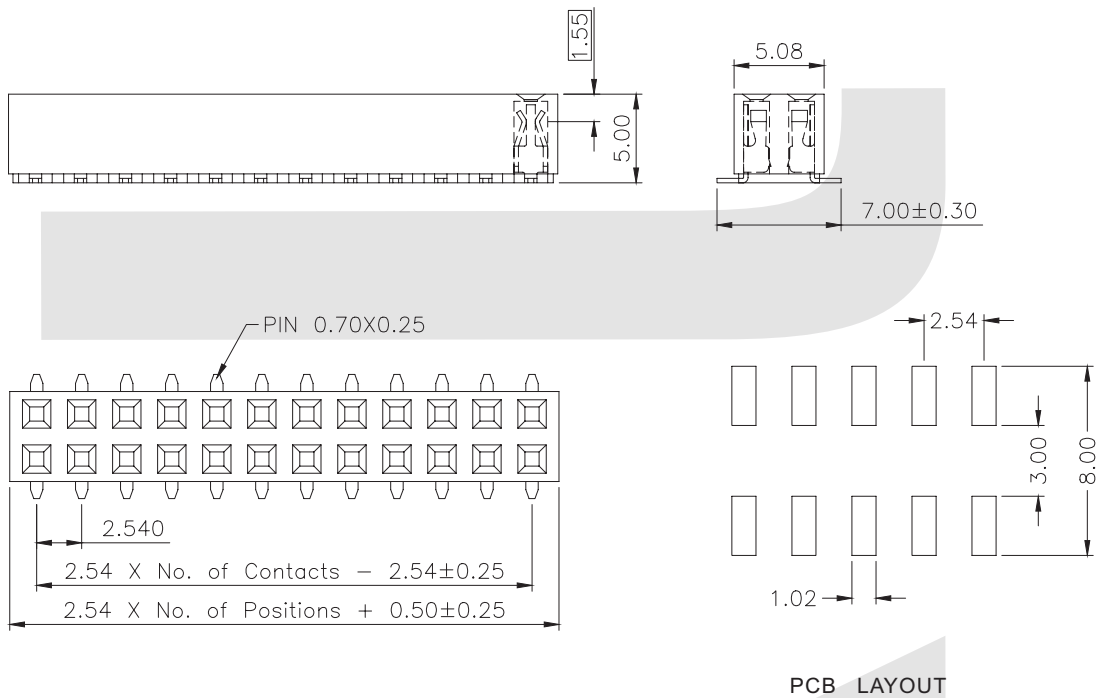
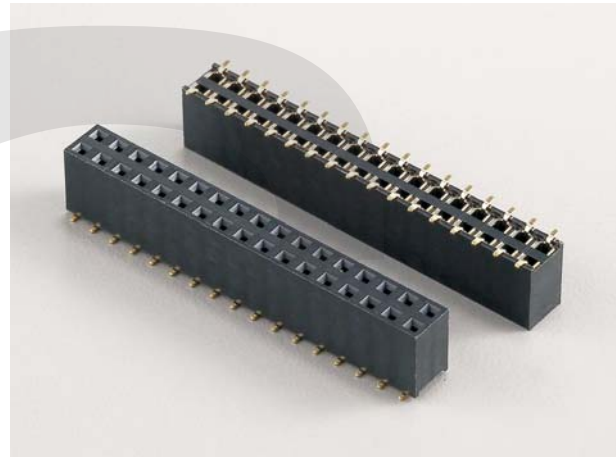
Current Rating: 1 AMP
 Insulator Resistance: 5000MΩmin. at DC 500V
 Contact Resistance: 20mΩmax. at DC 100mA
 Operating Temperature: -45°C~+105°C

Material:

Housing: 30% Glass filled PBT UL94V-0
 Contacts: Brass or Phosphor Bronze
 Plating: Gold plated: 0.8u" over 50u" nickel

Features:

- * Available in both straight and right angle.
- * Tuning fork contacts offer lower cost for competitive market.



ORDER INFORMATION

Product No.: KLS1-208Y-5.0-2-XX-T

Pos. No. _____ Tail Style: S=Straight Pin R=Right Pin T=SMT Pin
 Female Header 2.54mm Series _____ Total pin number: XX=02-80Pin
 High: 5.0mm, 5.7mm _____ 1=Single layer 2=Double layer