

TERMINAL BLOCK Connector

Screwless Series

KLS2-206-5.00/7.50 Series Pitch=5.00mm/7.50mm

Electrical :

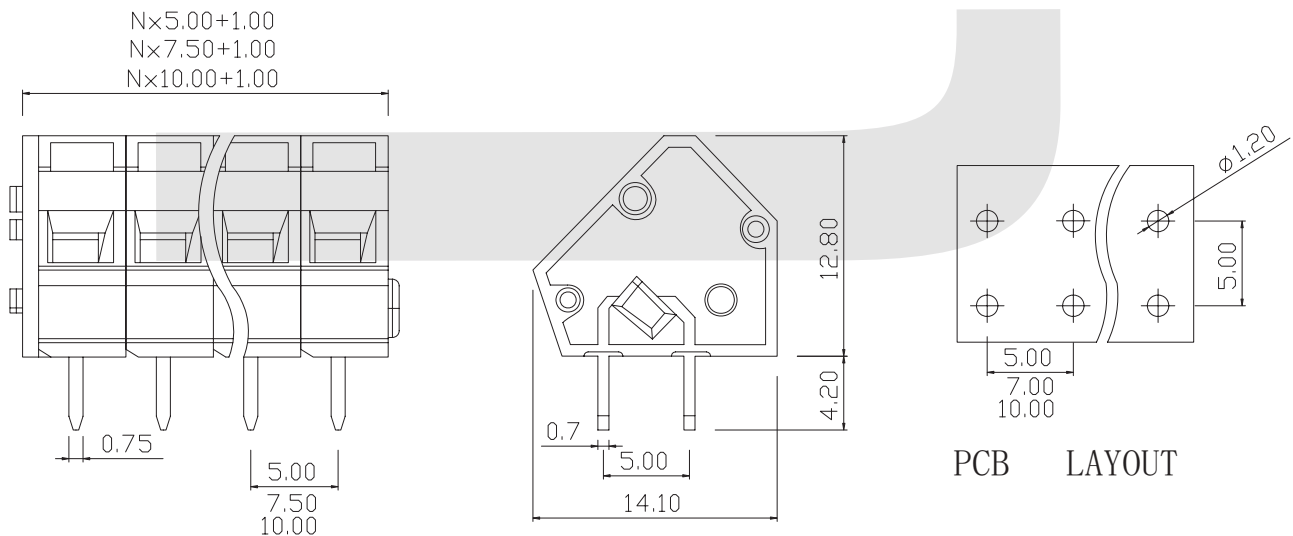
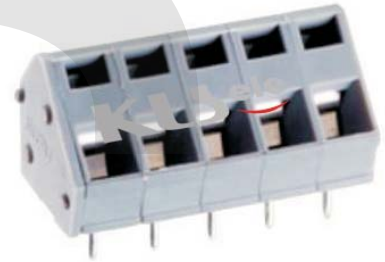
- Rated voltage: 300V
- Rated current: 15A
- Contact resistance: 20mΩ
- Insulation resistance: 5000MΩ/1000V
- Withstanding Voltage: AC2000V/1Min
- Wire range: 28-12AWG 2.5MM²

Material

- Housing: PA66, UL94V-0
- Wire guard: Stainless steel
- Pin header: Phosphor bronze, Tin plated

Mechanical

- Temp. Range: -40°C~+105°C
- Strip length: 5-6mm



ORDER INFORMATION

Product NO.: KLS2-206-5.00-XXP X X

Pos. NO.	Series No.	Pitch: 5.00=5.00mm 7.50=7.50mm 10.00=10.00mm	Number of Pole	Customer Request	Color: 1=Gray 4=Green 7=Transparent	2=Blue 5=Orange 8=Yellow	3=Black 6=Red 9=White
----------	------------	---	----------------	------------------	---	--------------------------------	-----------------------------