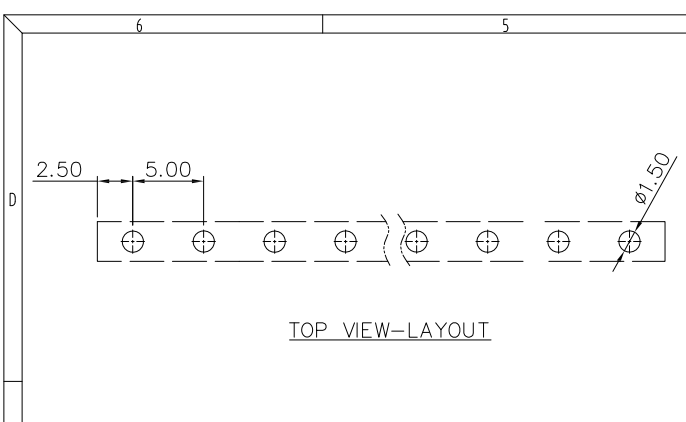
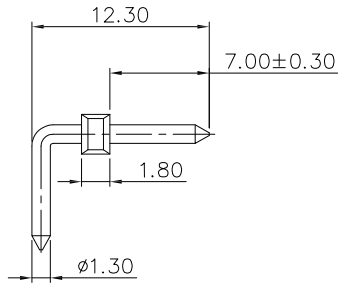
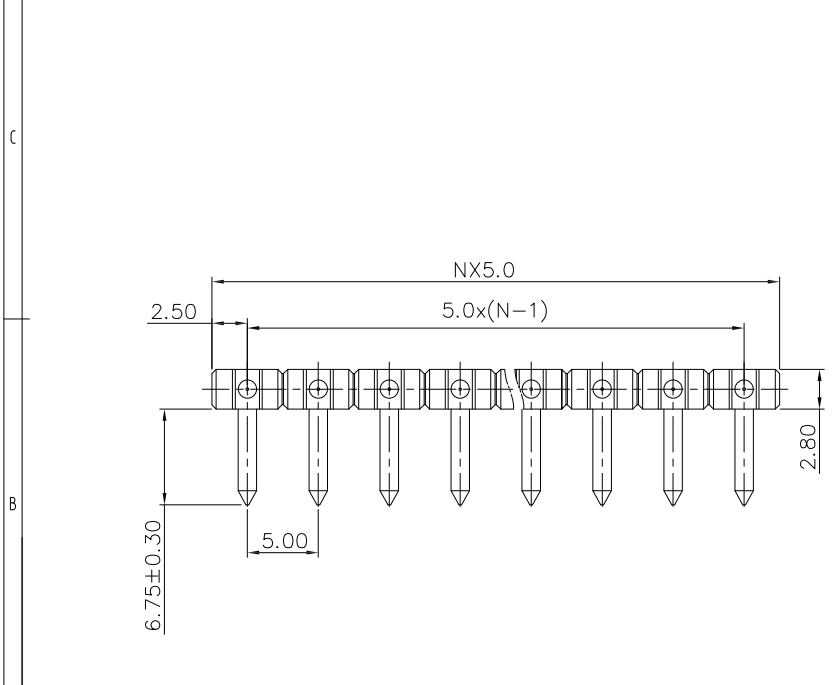


REV	CONTENT	CHK	DATE
V0.0	CONTENT	DLL	20.07.15



NOTES1:
 UL Standard
 1.Rated voltage/current : 300V/10A
 IEC Standard
 1.Rated voltage/current : 250V/12A

NOTES2:
 1.Pitch : 5.0mm
 2.Poles : N=02~24P
 3.Withstanding voltage : AC2000V/1Min
 3.Operating temperature : -40°C~+105°C
 4.RoHS Compliance:



GT332JR - 5.0 - XXP - 1 Y - 00

- Customer Request: 00-Standard
- Color: 1 Grey, 2 Blue, 3 Black, 4 Green, 5 Orange, 6 Red, 7 Transparent, 8 Yellow, 9 White
- Single Pitch, Double Pitch
- Poles: 02 02Contacts, 03 03Contacts, ... 20 20Contacts
- Pitch
- Series No

Total Pitch Tolerances in mm										Nominal dimension range in mm										⊥	≡	-	//		
over 0	over 30	over 53	over 70	over 90	over 115	over 150	over 250	over 350	over 500	over 0	over 30	over 53	over 70	over 90	over 115	over 150	over 200	over 250	over 320	0	over 10	all	over 0	over 100	over 150
±0.18	±0.20	±0.25	±0.3	±0.35	±0.44	±0.60	±0.70	±0.85	±0.20	±0.25	±0.30	±0.35	±0.44	±0.55	±0.70	±0.80	±0.90	0.2	0.3	0.3	0.2	0.3	0.5		

1	Housing	XXXXXX	1	LCP	UL94V-0
2	Contact	XXXXXX	P	Copper alloy	Sn plated
ITEM	NAME OF PART	NO. OF PART	Q'TY	MATERIAL	NOTE
DWG.	DLL	DATE	20.07.15	SIZE	A4 UNITS mm SHEET/OF 1/1
CHK.	DATE			SCALE	1:1
APP.	DATE			NAME	GT332JR-5.0-XXP-1Y-00
宁波冠泰电子有限公司 NINGBO GOLTEN ELECTRONICS CO., LTD.				DWGNO.	XXXX