

CANISTER TYPE > Model: CZL-401



CAPACITY:

10-100T

FEATURES:

Stainless Steel ; Hermetically sealed by laser; Auto-reseting, Four Column type

APPLICATIONS:

Vehicle scales, railroad scales, hopper scales etc

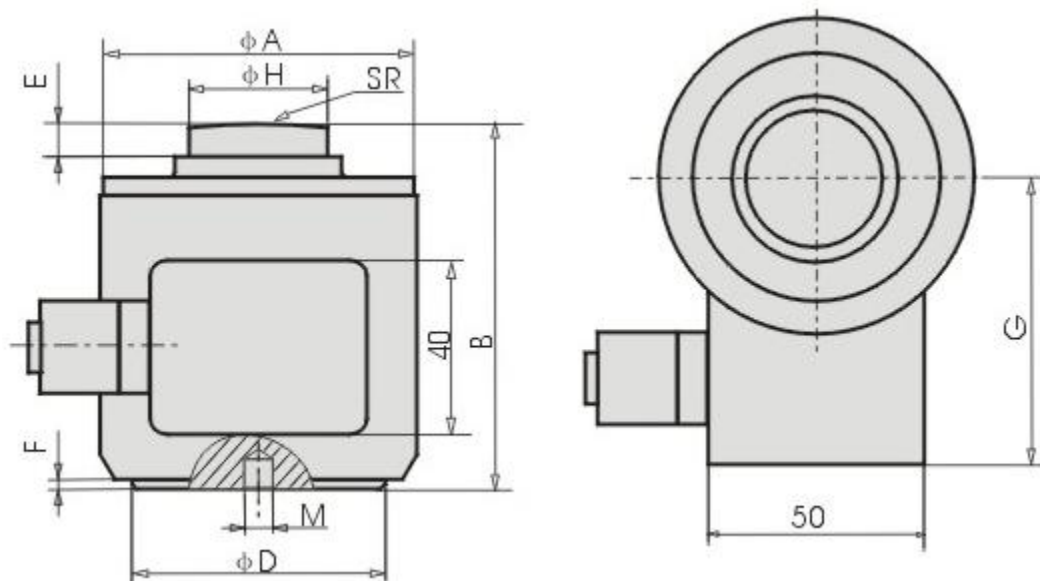
LOAD INSTRUCTION:



WIRING SCHEME:

Red +	(Input +)	White -	(Output -)	Black -	(Input -)	Green +	(Output +)
-------	-----------	---------	------------	---------	-----------	---------	------------

DIMENSIONS(mm):



Load		A	B	C	D	E	F	G	H	M	SR
klb	t										
25, 50	10, 25	72.0	83.0	12	58	6.5	1.8	63	32.0	M12x1.75 1/2—20UNF	150
100	40, 60	105	127	34	82.5	8.0	11.0	87	58.7	M20x2.5 3/4—16UNF	150
200	100	152.4	184.2	72.3	123.8	23.6	21.8	108.2	79.2	M20x2.5 3/4—16UNF	432

PARAMETERS:

Precision: 0.02%F.S	Insulation resistance: $\geq 5000\text{M}\Omega(100\text{VDC})$
Rated output: $2\pm 0.002\text{mv/v}$	Excitation voltage: 9~12VDC
Non-linearity: 0.02%F.S	Compensated temp.range: $-10\sim+40^{\circ}\text{C}$
Hysteresis: 0.02%F.S	Use temp.range: $-40\sim+80^{\circ}\text{C}$
Repeat: 0.01%F.S	Temp.effect on zero: $0.02\text{F.S}/10^{\circ}\text{C}$
Creep: $0.02\% \text{F.S}/10\text{min}$	Temp.effect on span: $0.02\text{F.S}/10^{\circ}\text{C}$
Zero balance: $\pm 1\% \text{F.S}$	Safe overload: 150%
Input resistance: $450\pm 5\Omega$	Ultimate overload: 200%
Output resistance: $480\pm 5\Omega$	Defend grade: IP68